

Weekly Market Summary

Published by:
Missouri Department of Agriculture
Ag Business Development Division
Market News Program



Chris Chinn, Director
 Davin Althoff, Division Director
 Tony Hancock, Editor
 agmarketnews.mo.gov
 http://www.ams.usda.gov/

Eric R. Greitens, Governor

Volume XXXVII, Number 51 ♦ P.O. Box 630, Jefferson City, MO 65102 ♦ (573) 751-4211 ♦ Friday December 22, 2017

MISSOURI WEEKLY FEEDER CATTLE WEIGHTED AVERAGE REPORT

Receipts: 24,002 Week ago: 29,262 Year ago: 15,339
 Steers and Heifers Medium and Large 1 Hols. Large 3

<u>Fdr. STEERS:</u>		<u>Fdr. HEIFERS:</u>		<u>Hols. STEERS</u>	
356 lbs.	187.09	364 lbs.	160.60	496 lbs.	84.14
453 lbs.	184.47	457 lbs.	153.61		
552 lbs.	170.56	544 lbs.	149.73		
647 lbs.	159.44	651 lbs.	144.98		
748 lbs.	153.75	729 lbs.	143.63		
848 lbs.	151.79	826 lbs.	134.88		

SOUTHERN MISSOURI WEEKLY SUMMARY (West Plains, Ava)

Receipts: 3449 Week ago: 4470 Year ago: 1530
 Compared to last week, feeders sold steady to weak, slaughter cows 2.00 to 3.00 higher.

<u>STEERS:</u>		<u>HEIFERS:</u>	
Medium and Large 1		Medium and Large 1	
300-400 lbs.	177.50-192.00	350-400 lbs.	158.00-167.50
400-500 lbs.	170.00-175.00	400-500 lbs.	145.00-159.00
500-600 lbs.	163.00-171.00	500-600 lbs.	140.00-152.00
600-700 lbs.	153.00-166.00	600-700 lbs.	135.00-143.00
700-800 lbs.	148.00-152.35	Pkg 740 lbs.	134.50

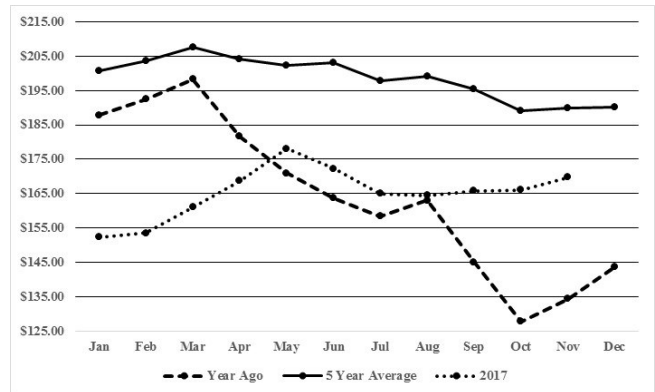
<u>Holsteins:</u>	<u>SLAUGHTER COWS:</u>
Large 3	Breaking and Boning (70-85% lean)
scarce	54.00-60.00, high dressing 59.00-68.50, low dressing 45.00-54.50. Lean (85-90%) 46.00-51.50

<u>SLAUGHTER BULLS:</u>	<u>REPLACEMENT COWS:</u>
Yield Grade 1-2 1110-2275 lbs. 76.00-86.00, high dressing 86.00-97.00, low dressing 65.00-75.50	Medium and Large 1-2 2-6 yrs 890-1740 lbs 2nd to 3rd stage 1000.00-1350.00, 1st stage 950.00-1050.00; 7 yrs to broken mouth 1075-1350 lbs 2nd to 3rd stage 900.00-1100.00 per head

COW & CALF PAIRS:
 Medium and Large 1-2 3-6 yrs 1158-1360 lbs with 150-200 lb calves 1200.00-1350.00; pkg 5 yrs 1382 lbs rebred 1st to 2nd stage 300-400 lb calves 1575.00 per pair

The Weekly Market Summary is available to anyone for a \$25.00 annual subscription fee. To subscribe, send your check or money order to: Weekly Market Summary, Missouri Department of Agriculture, P.O. Box 630, Jefferson City, MO 65102.

Historical Feeder Steers Medium and Large 1 500-600 lbs. Weighted Average



*Graph is updated the first Friday of each month.

Year Ago Slaughter Steers and Heifers:

Northeast Missouri: Steers: Choice 2-3 1250-1575 lbs 109.75-111.75
 Heifers: Choice 2-3 1150-1450 lbs 108.00-111.00

East Central Missouri: Steers and Heifers: Scarce

SOUTHWEST MISSOURI WEEKLY SUMMARY

(Joplin and Springfield)
 Feeder Cattle Receipts: 6468 Week ago: 6203 Year ago: 4188
 Cow and Bull Receipts: 3196 Week ago: 1287 Year ago: 3339
 Compared to last week, steer calves steady to 5.00 lower, yearlings steady to 3.00 lower. Heifers steady to 3.00 higher. Slaughter cows and bulls steady to 4.00 higher, with the greatest advance early week.

<u>STEERS:</u>		<u>HEIFERS:</u>	
Medium and Large 1		Medium and Large 1	
400-500 lbs.	160.00-200.00	350-400 lbs.	150.00-156.00
500-600 lbs.	154.00-181.00	400-500 lbs.	145.00-158.00
600-700 lbs.	138.50-160.00	500-600 lbs.	136.00-158.00
700-800 lbs.	136.00-155.00	600-700 lbs.	131.00-148.00
800-900 lbs.	132.50-153.50	700-800 lbs.	140.00-144.00
901 lbs.	155.25	800-900 lbs.	131.00-140.50

<u>HOLSTEINS:</u>	<u>SLAUGHTER COWS:</u>
Large 3	Breaking and Boning (70-85% lean)
Pkg 372 lbs. 89.00	49.00-58.00, high dressing 54.00-63.00
450-500 lbs. 84.00-85.00	Lean (85-90%) 41.50-51.00

SLAUGHTER BULLS: Yield Grade 1-2 1290-2290 lbs 74.00-80.00, high dressing 80.50-92.00, low dressing 60.00-72.00

REPLACEMENT COWS: Medium and Large 1 1 1/2 yrs 1040-1158 lbs 2nd to 3rd stage 1525.00-1600.00 per head. Medium and Large 1-2 2-7 yrs 975-1370 lbs 1st to 3rd stage 925.00-1700.00; short solid to aged 1110-1540 lbs 2nd to 3rd stage 975.00-1275.00 per head

COW & CALF PAIRS: Medium and Large 1 5 yrs to short solid 1140-1285 lbs with babies to 375 lb calves 1600.00-2000.00 per pair. Medium and Large 1-2 4 yrs to short solid 940-1350 lbs some rebred with babies to 450 lb calves 1300.00-1925.00 per pair

WEST CENTRAL MISSOURI WEEKLY SUMMARY

(Sedalia, Kingsville, Butler)

Receipts: 3421 Week ago: 4815 Year ago: 1702

Compared to last week, feeders uneven from 5.00 lower to 5.00 higher. Slaughter cows steady to 3.00 higher.

FEEDER STEERS:
Medium and Large 1400-500 lbs. 178.00-202.25
500-600 lbs. 166.00-178.00
600-700 lbs. 151.00-161.00
700-800 lbs. 145.00-167.25
800-900 lbs. 153.25-157.00FEEDER HEIFERS:
Medium and Large 1400-500 lbs. 148.00-174.00
500-600 lbs. 143.50-163.00
600-700 lbs. 142.50-151.50
700-800 lbs. 138.85-147.25
900-1000 lbs. 129.85REPLACEMENT COWS: Medium and Large 1-2 2-7 yrs 950-1225 lbs 2nd to 3rd stage 1010.00-1350.00 per headSLAUGHTER COWS: Breaking and Boning (70-85% lean) 49.00-61.50. Lean (85-90%) 42.00-51.25COW & CALF PAIRS: Medium and Large 1-2 2-3 yrs 950-1340 lbs with 225-350 lb calves 1385.00-1725.00 per pairSLAUGHTER BULLS: Yield Grade 1-2 1200-2300 lbs 71.50-82.00, high dressing 82.50-88.50, low dressing 59.00-76.00**EAST CENTRAL MISSOURI WEEKLY SUMMARY**

(Bowling Green, Kingdom City, Macon, Boonville)

Receipts: 4736 Week ago: 5482 Year ago: 4049

Compared to last week, feeder calves steady to 5.00 higher, yearlings steady to firm. Slaughter cows steady to firm.

FEEDER STEERS:
Medium and Large 1400-500 lbs. 187.00-203.00
500-600 lbs. 168.00-192.00
600-700 lbs. 160.00-172.50
700-800 lbs. 154.50-167.50
800-900 lbs. 142.50-144.85FEEDER HEIFERS:
Medium and Large 1300-400 lbs. 160.00-167.00
400-500 lbs. 155.00-170.00
500-600 lbs. 150.00-164.00
600-700 lbs. 147.00-157.50
700-800 lbs. 150.00-151.25SLAUGHTER STEERS and HEIFERS: Select and Choice 1-3 1150-1550 lbs 112.00-116.00. Select 1-2 1050-1300 lbs 101.00-106.00SLAUGHTER COWS: Breaking and Boning, (70-85% lean) Average dressing 55.00-60.00 high dressing 61.00-67.50. Lean (85-90%) 58.50-61.00BRED HEIFERS: Medium and Large 1 1280-1315 lbs 2nd stage 1925.00-2100.00. Medium and Large 1-2 950-1100 lbs 2nd stage 1500.00-1660.00 per headSLAUGHTER BULLS: Yield Grade 1-2 1200-2525 lbs 78.00-84.00, high dressing 85.00-86.00, low dressing 67.50-75.50**NORTHEAST MISSOURI WEEKLY SUMMARY**

(Palmyra, Unionville, Green City, New Cambria)

Receipts: 2934 Week ago: 1860 Year ago: 1638

Slaughter Cattle Receipts: 20 Week ago: 13 Year ago: 18

Compared to last week, steady on a light test. Slaughter steers and heifers 2.00 to 3 higher. Slaughter cows steady to 2.00 higher.

FEEDER STEERS:
Medium and Large 1300-400 lbs. 180.00-199.00
400-500 lbs. 193.25-209.00
500-600 lbs. 159.00-180.00
600-700 lbs. 149.00-170.50
700-800 lbs. 149.50-160.00FEEDER HEIFERS:
Medium and Large 1300-400 lbs. 174.00-180.00
400-500 lbs. 150.00-169.50
500-600 lbs. 159.50-165.50
600-700 lbs. 145.50-160.00SLAUGHTER STEERS: Choice 2-3 1250-1400 lbs 117.00-118.25SLAUGHTER COWS: Breaking and Boning (75-85% lean) 47.50-57.50, high dressing 58.00-67.00. Lean (85-90%) 44.00-54.50SLAUGHTER HEIFERS: Choice 2-3 1400-1525 lbs 118.25-119.00SLAUGHTER BULLS: Yield Grade 1-2 1500-2450 lbs 72.50-85.00REPLACEMENT COWS: Medium and Large 1 heifers 2 yrs 1100-1230 3rd stage 1800.00-1985.00 per headCOW & CALF PAIRS: Medium and Large 1-2 3-6 yrs 1100-1400 lbs baby to 250 lb calves 1550.00-1950.00 per pair**SOUTHEAST MISSOURI WEEKLY SUMMARY**

(Farmington, Patton)

Receipts: 2384 Week ago: 2406 Year ago: 1301

Compared to last week, feeders uneven 6.00 lower to 8.00 higher. Slaughter cows 3.00 lower to 4.00 higher.

FEEDER STEERS:
Medium and Large 1300-400 lbs. 160.00-193.00
400-500 lbs. 151.00-172.00
500-600 lbs. 139.00-166.50
600-700 lbs. 140.00-157.00
700-800 lbs. 130.00-151.50FEEDER HEIFERS:
Medium and Large 1300-400 lbs. 142.50-171.00
400-500 lbs. 135.00-162.00
500-600 lbs. 125.00-152.00
600-700 lbs. 125.00-140.00
700-800 lbs. 120.00-146.00REPLACEMENT COWS: Medium and Large 1-2 2-7 yrs 975-1585 lbs 2nd to 3rd stage 1000.00-1275.00 per headSLAUGHTER COWS: Breaking and Boning (75-85% lean) 45.00-55.00. Lean (85-90% lean) 35.00-44.00COW & CALF PAIRS: Medium and Large 1-2 short solid 980-1430 lbs with 125-400 lb calves 795.00-1475.00 per pairSLAUGHTER BULLS: Yield Grade 1-2 few 1150-2445 lbs 60.00-74.50, high dressing 74.50-86.50**SOUTH CENTRAL MISSOURI WEEKLY SUMMARY**

(Cuba, Vienna)

Receipts: 1451 Week ago: 1929 Year ago: 1251

Compared to last week, under 450 lbs steady to 3.00 higher, over 450 lbs steady to 4.00 lower. Slaughter cows 1.00-3.00 higher.

FEEDER STEERS:
Medium and Large 1300-400 lbs. 180.00-189.00
400-500 lbs. 164.50-190.50
500-600 lbs. 157.00-176.50
600-700 lbs. 149.50-157.50
700-800 lbs. 145.25-148.00FEEDER HEIFERS:
Medium and Large 1300-400 lbs. 155.50-173.00
400-500 lbs. 150.00-165.00
500-600 lbs. 141.50-158.50
600-700 lbs. 132.50-138.00REPLACEMENT COWS: Medium and Large 1-2 few 4 yrs to short solid 1000-1600 lbs 1st to 3rd stage 900.00-1235.00 per headSLAUGHTER COWS: Breaking and Boning (70-85% lean) 52.00-58.00. Lean (85-90%) 47.00-53.00COW & CALF PAIRS: scarceSLAUGHTER BULLS: Yield Grade 1-2 1300-2250 lbs 75.50-83.50, low dressing 60.00-72.00**NORTHWEST MISSOURI WEEKLY SUMMARY**

(St Joseph)

Receipts: 2240 Week ago: 3490 Year ago: 1004

Compared to last week, steer calves unevenly steady. Heifer calves steady to 3.00 higher. Slaughter cows steady to 2.00 higher. Slaughter bulls mostly steady.

FEEDER STEERS:
Medium and Large 1300-400 lbs. 200.00-210.00
400-500 lbs. 184.50-210.50
500-600 lbs. 159.50-187.00FEEDER HEIFERS:
Medium and Large 1300-400 lbs. 163.00-179.00
400-500 lbs. 149.00-172.00
500-600 lbs. 141.50-152.50
600-700 lbs. 135.50-150.50
700-800 lbs. 129.25-140.00SLAUGHTER BULLS: Yield Grade 1-2 1265-2335 lbs 70.00-78.00, high dressing 81.00, low dressing 65.00-70.00SLAUGHTER COWS: Breaking and Boning (70-85% lean) 50.00-62.00. Lean (85-90%) 40.00-52.00BRED COWS: Medium and Large 1 2-4 yrs 1303 lbs 2nd stage 1400.00; 2-4 yrs 1243 lbs 2nd to 3rd stage 1250.00 per headCOW-CALF PAIRS: Medium and Large 1 2-4 yrs 1350 lbs with 150-300 lb calf 1485.00 per head; 5-8 yrs 1300 lbs with 150-300 lb calf 1610.00 per pair

MISSOURI WEEKLY DIRECT WEANER AND FEEDER PIG REPORT

Receipts: 8287 Weaner pigs sold steady to 1.00 higher. Feeder pigs no recent sales reported. Prices per head. Early weaned pigs 10 lb. base weights FOB the farm 0% negotiated, 5287 head, 10 lbs, 36.00-45.75, weighted average 42.74. Early weaned pigs 10 lb base weights, delivered 100% negotiated, 3000 head, 10 lbs, 73.00

**WHOLESALE FEEDSTUFFS PRICES
(DOLLARS PER TON-BULK BASIS)**

Area	Soybean Meal 48% Solvent	Cottonseed Meal 41% Solvent	Meat Meal	Wheat Middlings
Kansas City	303.70	260.00	190.00	137.50
St. Louis	333.50	280.00	220.00	122.50

MISSOURI WEEKLY DIRECT

Weekly Receipts: 320 Week ago: 540 Year ago: 0
Trading from late last Friday remains light with dressed grid prices mostly 3.00 higher.

LIVE STEERS & HEIFERS: DRESSED STEERS & HEIFERS:
3 loads FOB 120.00 2 loads 191.00-193.00

GRADE AND WEIGHT (Grid):
3 loads 195.00

By-Product Feed Prices

Alfalfa Pellets, St. Louis MO 235.00; Corn Gluten Feed pelleted, South MO FOB 146.00-150.00; Distillers Grain Dried, FOB Carrollton, MO 150.00; Soy Hulls Kansas City, MO 138.00. Prices per ton.

Springfield Livestock Marketing Center

Special Dairy Heifer Sale Report for 12/19/2017

Receipts: 352 Last Month Special: 772 Year Ago: 593
Springer Heifers bred seven to nine months: Supreme ind 1270.00, ind crossbred 1225.00. Approved 1000.00-1175.00, few crossbreds 1075.00-1125.00. Medium 900.00-935.00, ind crossbred 975.00. Common 675.00-725.00, ind crossbred 520.00. Heifers bred three to six months: Supreme 1200.00-1250.00, ind crossbred 1200.00. Approved 1000.00-1150.00, crossbreds 950.00-1100.00. Medium 825.00-900.00, few Jerseys 885.00-850.00. Common 570.00-775.00, ind Jersey 600.00, few crossbreds 570.00-760.00. Open Heifers: Approved: 198-268 lbs few 150.00, ind Jersey 300.00; 345-365 lbs 310.00-340.00; 405-500 lbs 450.00-530.00, ind Jersey 400.00, crossbreds 400.00-465.00; 505-580 lbs 570.00-620.00, ind Jersey 560.00; 615-698 lbs 570.00-680.00, ind Jersey 670.00, few crossbreds 510.00; 749-775 lbs few Jerseys 720.00-740.00. Replacement Cows: Fresh and Milking Cows and Heifers: Supreme 1375.00-1500.00. Approved 1125.00-1325.00, Jerseys 900.00-935.00. Springer Cows: few Approved Jerseys 1000.00-1025.00 Bred Cows: Medium ind 850.00, few Jerseys 850.00-870.00. Baby Calves: Holstein heifers 110.00-180.00. Holstein bulls 80.00-130.00. Jersey bulls 55.00-60.00. crossbred bulls 55.00-130.00. beef cross bulls 145.00-180.00.

Diamond – TS Whites Sheep and Goat Sale

Select Thursday Sheep and Goat Auction for 12/21/17

Receipts: 684 Last Month: 1076 Last Year: 1334

All prices are per hundred weight (CWT) unless noted otherwise.
SHEEP: Slaughter Lambs, mostly hair: Prime 3-4 50-72 lbs 200.00-220.00; 80-95 lbs 170.00-183.00; 105-128 lbs 137.50-145.00. Choice 2-3 55-78 lbs 180.00-197.50; 80-95 lbs 150.00-165.00. Choice 1-2 70-95 lbs 130.00-177.50. Replacement Hair Ewes, Few: Medium and Large 1 fancy 130-140 lbs 160.00-170. Medium and Large 1-2 125-132 lbs 110.00-115.00. Slaughter Hair Ewes: Utility and Good 1-3 80-155 lbs 82.50-95.00. Replacement Hair Rams: Medium and Large 1-2 120-140 lbs 135.00-145.00. Medium and Large 2-3 110-125 lbs 115.00-120.00. Slaughter Rams 165-170 lbs 75.00-90.00. GOATS: Feeder kids: Selection 1 30-35 lbs 260.00-285.00. Selection 2 30-35 lbs 200.00-235.00. Selection 3 32-40 lbs 160.00-180.00. Slaughter Kids: Selection 1 40-65 lbs 250.00-270.00; 70-80 lbs 222.50-227.50; 90-165 lbs 165.00-187.50. Selection 2 42-75 lbs 220.00-250.00; 65-87 lbs 160.00-190.00. Selection 3 52-85 lbs 170.00-200.00. Replacement Does: Selection 1-2 62-103 lbs 160.00-185.00; 75-170 125.00-150.00. Slaughter Does: Selection 2-3 55-155 lbs 100.00-125.00. Replacement Bucks: Selection 1 95-160 lbs 152.50-180.00. Slaughter Bucks: Selection 2 88-160 lbs 130.00-145.00. Selection 3 65-120 lbs 110.00-140.00.

WEEKLY COMMODITY GRAIN FUTURES TRENDS

Compared to last Friday: Soybeans .17 to .19 lower, Wheat .04 to .07 higher, Corn .04 to .05 higher, Kansas City Wheat .05 to .06 higher, Soybean Meal 6.20 to 7.80 lower.

Daily Grain Futures Closes

	Mon.	Tues.	Wed.	Thu.	Fri.
Soybeans					
Jan	961 1/2	956	954	948 3/4	949 1/2
Mar	972 1/4	966 3/4	964 1/2	959	960 1/4
May	983 1/4	977 3/4	976	970 1/2	971 1/4
Jul	993 1/2	988 1/4	986 1/2	981	981 3/4
Aug	995 1/2	990 1/4	988 1/4	983 1/2	984
Wheat					
Mar	420 1/2	419 1/2	423 1/2	427	424 3/4
May	433 1/2	432 3/4	436 1/4	439	437 1/2
Jul	446 3/4	446 1/2	450	451 3/4	450
Sep	460 1/4	459 3/4	462 3/4	463 3/4	461 1/4
Dec	477 1/2	477 1/2	479 1/2	479 1/2	476 1/2
Corn					
Mar	347	347 1/2	349 1/4	351 1/4	352
May	355 1/4	355 3/4	357 1/2	359 1/2	360 1/2
Jul	363 3/4	364 1/4	366	367 3/4	368 3/4
Sep	371	371 1/2	373 1/2	375	376
Dec	380	380 3/4	382 1/2	383 3/4	384 1/2
KC Wheat					
Mar	419 1/4	420	422 1/2	424 1/4	422 1/4
May	431 3/4	433	435 1/2	437 1/4	436 3/4
Jul	448 1/4	449 3/4	452 1/4	453 3/4	452 3/4
Sep	463 1/4	464 1/2	467 1/4	468 1/4	467 1/2
Dec	485 1/4	486 1/4	488 1/2	489	488 1/4
SB Meal					
Jan	318.50	315.20	315.70	314.20	312.80
Mar	322.50	319.10	319.70	318.10	316.70
May	325.70	322.40	322.90	321.50	320.30
Jul	329.00	325.90	326.50	325.00	323.90
Aug	329.30	326.10	326.70	325.40	324.20

WEEKLY COMMODITY FUTURES TRENDS

Compared to last week: Live Cattle Dec .92 higher others 2.45 to 3.57 lower, Lean Hogs 1.45 to 1.97 higher, Feeder Cattle 5.35 to 7.00 lower.

Daily Futures Closes

	Mon.	Tues.	Wed.	Thu.	Fri.
Cattle					
Dec	119.97	120.00	119.40	119.62	119.82
Feb	120.60	120.45	118.95	119.67	118.57
Apr	122.02	121.47	119.95	120.57	119.27
Jun	114.27	113.57	111.80	112.37	111.15
Aug	110.85	110.05	108.25	108.82	108.15
Lean Hogs					
Feb	67.40	66.90	68.37	68.57	69.97
Apr	72.25	71.67	72.95	73.07	74.77
May	77.45	76.90	78.02	78.30	79.75
Jun	82.15	81.27	82.50	82.62	84.00
Jul	82.30	81.50	82.72	82.87	83.60
Fdr Cat					
Jan	147.65	145.20	141.77	142.92	141.55
Mar	145.25	143.30	139.75	140.40	138.55
Apr	145.55	143.67	140.45	141.10	139.45
May	145.20	143.32	140.55	141.02	139.35
Aug	147.92	146.15	144.00	144.45	142.70
Milk					
Dec	15.50	15.44	15.44	15.44	15.43
Jan	14.05	13.93	13.80	13.97	14.02
Feb	13.84	13.65	13.56	13.40	13.64

INTERIOR MISSOURI DIRECT HOGS

Weekly Receipts: 1397 Week ago: 2445 Year ago: 2401
Compared to last week, barrows and gilts steady to 3.00 lower. Sows steady to 2.00 lower.

BARROWS AND GILTS: SOWS:
Base carcass meat price 47.00-50.00. Weekly top fri 50.00 300-500 lbs. 28.00-33.00
Over 500 lbs. 32.00-38.00

WEEKLY MARKET SUMMARY
 (USPS 597250)
 To be published weekly by the
 Missouri Department of Agriculture
 1616 Missouri Blvd.
 Jefferson City, MO 65109

Postmaster: Send address changes to:
 Missouri Department of Agriculture
 P.O. Box 630
 Jefferson City, MO 65102

Periodicals postage paid at
 Jefferson City, Missouri

Market News Hotline
1-573-522-9244

December 22, 2017

MISSOURI GRAIN WEEKLY TRENDS

Weekly Trends: Soybeans .12 to .33 lower, Wheat .01 lower to .26 higher, Corn .01 to .11 lower, Sorghum .11 lower to .16 higher.

Area	#1 Soy-beans	#2 Soft Wheat	#2 Corn	#2 Grain Sorghum
Kansas City				
Friday**	9.27-9.32	3.53-3.68	3.22-3.32	5.83
Monday	9.22-9.27	3.56-3.70	3.22-3.32	6.01
Tuesday	9.16-9.21	3.55-3.69	3.23-3.32	6.01
Wednesday	9.13-9.19	3.59-3.73	3.25-3.34	6.05
Thursday	9.09-9.13	3.62-3.77	3.26-3.36	6.08
Friday	9.10-9.14	3.60-3.75	3.27-3.37	6.10
St. Louis				
Friday**	9.64-9.66	4.18-4.28	3.41-3.42	6.10-6.14
Monday	9.61-9.62	4.21-4.31	3.39-3.40	6.10-6.14
Tuesday	9.56	4.19-4.29	3.40-3.41	6.10-6.14
Wednesday	9.53-9.54	4.23-4.33	3.45-3.46	6.14-6.17
Thursday	9.50-9.52	4.27-4.37	3.49	6.17-6.21
Friday	9.52-9.54	4.25-4.33	3.49-3.51	6.19-6.23
Central				
Friday**	9.12	3.38	3.09-3.15	—
Monday	9.06-9.07	3.40-3.41	3.09-3.14	—
Tuesday	9.01	3.39-3.40	3.10-3.15	—
Wednesday	8.99	3.43-3.44	3.11-3.16	—
Thursday	8.94-8.99	3.47	3.16-3.21	—
Friday	8.99-9.00	3.44-3.45	3.17-3.22	—
S.E. MO				
Friday**	9.56-9.68	4.25	3.32-3.41	—
Monday	9.50-9.58	4.28	3.30-3.37	—
Tuesday	9.44-9.55	4.26	3.35-3.37	—
Wednesday	9.44-9.55	4.30	3.37-3.42	—
Thursday	9.42-9.49	4.33	3.40-3.46	—
Friday	9.47-9.51	—	3.42-3.47	—

(PRICES PER BU. EXCEPT GR. SORG. PER CWT)

*NEW CROP **PREVIOUS WEEK'S PRICES

Missouri Weekly Hay Summary - Week ending 12/22/2017

The entire state is now officially listed in some state of drought status, as the northwest was as abnormally dry. The official start of winter also arrived this week and although temperatures have been above normal forecast are projecting that more winter like temperatures at least are on the way. There has been an uptick in interest for hay this week but nearly all seems to be from horse owners looking for small amounts of better quality hay. Many cattle men are feeding now but trying to feed older lower quality hay have had setting around for a year or two until temperatures require better quality feed. Overall hay movement is slow, supplies are moderate, demand is light and prices are steady. The Missouri Department of Agriculture has a hay directory available for both buyers and sellers. To be listed, or for a directory visit <http://mda.mo.gov/abd/haydirectory/> for listings of hay <http://agebb.missouri.edu/haylst/> (All prices f.o.b. and per ton unless specified and on most recent reported sales price listed as round bales based generally on 5x6 bales with weights of approximately 1200-1500 lbs).

Supreme quality Alfalfa (RFV <185) 180.00-250.00
 Premium quality Alfalfa (RFV 170-180) 150.00-180.00
 Good quality Alfalfa (RFV 150-170) 120.00-160.00
 small squares 4.50-5.00 per bale
 Fair quality Alfalfa (RFV 130-150) 100.00-120.00

Good quality Mixed Grass hay 75.00-100.00
 Small squares 3.00-4.50 per bale (some alfalfa/grass mix)
 Fair to Good quality Mixed Grass hay 50.00-80.00
 small squares 2.50-3.50 per bale
 Fair quality Mixed Grass hay 20.00-35.00 per large round bale

Good quality Bromegrass 100.00-150.00
 Fair to Good quality Bromegrass 50.00-80.00
 Wheat straw 3.00-6.00 per small square bale