

# Weekly Market Summary

Published by:  
**Missouri Department of Agriculture**  
**Ag Business Development Division**  
**Market News Program**



Chris Chinn, Director  
 Davin Althoff, Division Director  
 Tony Hancock, Editor  
 agmarketnews.mo.gov  
<http://www.ams.usda.gov/marketnews.htm>

Michael L. Parson, Governor

Volume XXXVIII, Number 27 ♦ P.O. Box 630, Jefferson City, MO 65102 ♦ (573) 751-4211 ♦ Monday, July 08, 2019

## MISSOURI WEEKLY FEEDER CATTLE WEIGHTED AVERAGE REPORT

Receipts: 11,824 Week ago: 41,635 Year ago: 29,773  
 Steers and Heifers Medium and Large 1—Weighted average weights and prices

### STEERS: Medium and Large 1

388 lbs. 170.00	573 lbs. 167.91	763 lbs. 137.75	961 lbs. 123.50
423 lbs. 168.02	624 lbs. 157.38	827 lbs. 139.57	
475 lbs. 164.09	679 lbs. 146.88	868 lbs. 137.37	
522 lbs. 166.19	731 lbs. 144.26	926 lbs. 138.21	

### HEIFERS: Medium and Large 1

313 lbs. 146.37	522 lbs. 149.84	715 lbs. 131.48
376 lbs. 145.45	575 lbs. 138.90	769 lbs. 129.40
430 lbs. 149.62	620 lbs. 139.86	855 lbs. 120.00
474 lbs. 142.42	667 lbs. 139.14	

### Missouri Stocker Formula for 07/05/2019

Friday's **Missouri Stocker Formula** consists of **2369 head** with a weighted average weight of **560.48 lbs.** and a price value of **158.12**, 1.93 higher than last Friday.

\*Data is limited due to holiday sale schedules

This a rolling seven day calculated weighted value which combines all Feeder Steers reported by MDA/USDA Market News Service weighing from 400-649 lbs. in the Medium and Large 1 and Medium and Large 1-2 frame and muscle classifications, including all comment cattle except Brahman X.

### SOUTH CENTRAL MISSOURI WEEKLY SUMMARY

(West Plains, Ava) (6/28/19)

Receipts: 6263 Week Ago: 5164 Year Ago: 8407

Compared to last week, early week feeder calves 3.00 to 8.00 lower, yearlings steady to 4.00 higher. Late week steers and heifers mostly steady to 5.00 higher. Slaughter cows mostly steady to 2.00 higher.

#### STEERS:

Medium and Large 1

300-400 lbs.	168.00-175.00
400-500 lbs.	152.00-174.00
500-600 lbs.	140.00-165.00
600-700 lbs.	132.50-150.00
700-800 lbs.	127.00-139.00
800-900 lbs.	122.50-128.00

Holsteins:  
Large 3

Scarce

#### HEIFERS:

Medium and Large 1

300-400 lbs.	140.00-155.00
400-500 lbs.	131.00-145.00
500-600 lbs.	125.00-139.00
600-700 lbs.	121.00-135.00
700-800 lbs.	115.00-129.75
Part load 847 lbs.	112.75

#### SLAUGHTER COWS:

Breaking and Boning (70-85% lean) 52.50-60.50, high dressing 59.50-68.50, low dressing 45.00-54.00. Lean (85-90%) 42.50-55.00

#### REPLACEMENT COWS:

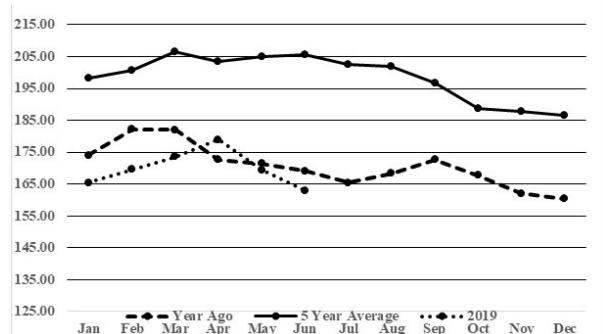
Medium and Large 1-2 2-8 yrs 1070-1518 lbs 1025.00-1250.00, 1st stage 925.00-1025.00 per head

#### SLAUGHTER BULLS:

Yield Grade 1-2 8865-2190 lbs. 77.00-87.50, high dressing 88.00-100.00, low dressing 65.00-78.50

COW & CALF PAIRS: Medium and Large 1-2 2-8 yrs 1025-1425 lbs with 150-300 lb calves 1125.00-1225.00 per pair

### Historical Feeder Steers Medium and Large 1 500-600 lbs. Weighted Average



\*Graph is updated the first Friday of each month.

### SOUTHWEST MISSOURI WEEKLY SUMMARY

(Joplin and Springfield)

Feeder Cattle Receipts: 5985 Week Ago: 18,598 Year ago: 6123

Cow and Bull Receipts: 1028 Week ago: 1028 Year ago: 0

Compared to last week, feeders steady, except steer calves over 500 lbs steady to 3.00 higher, heifer calves under 500 lbs 2.00 to 4.00 lower. Slaughter cows 1.00 to 2.00 higher. Slaughter bulls 2.00 higher.

#### STEERS:

Medium and Large 1

Pkg 388 lbs.	170.00
400-500 lbs.	156.00-172.50
500-600 lbs.	150.00-173.00
600-700 lbs.	140.00-157.00
700-800 lbs.	135.00-144.00
800-900 lbs.	132.00-138.50
900-1000 lbs.	123.00-123.50

HOLSTEINS:  
Large 3

Scarce

#### HEIFERS:

Medium and Large 1

300-400 lbs.	140.00-150.00
400-500 lbs.	138.00-149.00
500-600 lbs.	131.00-150.50
600-700 lbs.	127.00-139.50
700-800 lbs.	122.00-127.75
Part load 855 lbs.	120.00

SLAUGHTER COWS: Breaking and Boning (70-85% lean) 52.00-68.00, high dressing 61.50-75.00. Lean (85-90%) 41.00-49.50  
SLAUGHTER BULLS: Yield Grade 1-2 1140-2290 lbs 80.00-88.00; high dressing 89.00-96.00, low dressing 64.00-79.50

REPLACEMENT COWS: Medium and Large 1 2-8 yrs few 1175-1365 lbs 2nd to 3rd stage 1150.00-1300.00. Medium and Large 1-2 2-8 yrs 1125-1365 lbs 2nd to 3rd stage 825.00-1025.00 per head

COW & CALF PAIRS: Scarce

The Weekly Market Summary is available to anyone for a \$25.00 annual subscription fee. To subscribe, send your check to: Weekly Market Summary, Missouri Department of Agriculture, P.O. Box 630, Jefferson City, MO 65102.

**WEST CENTRAL MISSOURI WEEKLY SUMMARY**

(Sedalia, Kingsville, Windsor, Butler) (6/28/19)

Receipts: 5354 Week ago: 6623 Year ago: 5025

Compared to last week, feeders steady to 5.00 lower. Slaughter cows steady to 2.00 lower.

FEEDER STEERS:

Medium and Large 1

400-500 lbs. 164.00-179.50  
 500-600 lbs. 149.00-173.00  
 600-700 lbs. 138.25-159.50  
 700-800 lbs. 131.50-153.00  
 Lot 842 lbs. 130.25

FEEDER HEIFERS:

Medium and Large 1

400-500 lbs. 145.00-157.00  
 500-600 lbs. 137.00-154.50  
 600-700 lbs. 127.75-149.75  
 700-800 lbs. 124.00-138.00

SLAUGHTER BULLS: Yield  
 Grade 1-2 1085-2140 lbs 77.00-  
 86.50; high dressing 87.00-92.00;  
 low dressing 69.50-75.50

SLAUGHTER COWS: Break-  
 ing and Boning (70-85% lean)  
 52.00-67.50. Lean (85-90%)  
 49.00-58.00

REPLACEMENT COWS: Medi-  
 um and Large 1-2 5-8 yrs 1102-  
 1278 lbs 2nd to 3rd stage 885.00-  
 1100.00 per head

COW & CALF PAIRS: Medium  
 and Large 1-2 2-8 yrs 1000-  
 1400 lbs with baby calves  
 1025.00-1175.00 per pair

**NORTHEAST MISSOURI WEEKLY SUMMARY**

(Bowling Green, Kingdom City, Palmyra) (6/28/19)

Receipts: 3003 Week ago: 4202 Year ago: 4888

Compared to last week, steers under 650 lbs mostly 5.00 to 8.00 lower, over 650 lbs steady to firm. Heifers under 600 lbs mostly 5.00 lower, over 600 lbs steady. Slaughter cows steady.

FEEDER STEERS:

Medium and Large 1

400-500 lbs. 173.00-185.00  
 500-600 lbs. 155.25-174.50  
 600-700 lbs. 149.00-155.50  
 750-800 lbs. 135.00  
 850-900 lbs. 130.60-131.35

FEEDER HEIFERS:

Medium and Large 1

400-500 lbs. 146.00-153.00  
 500-600 lbs. 140.50-144.75  
 600-650 lbs. 135.00-138.75  
 700-800 lbs. 127.50-131.60

BRED COWS: Medium and Large  
 1 2-8 yrs 1132-1512 lbs 2nd stage  
 1325.00-1485.00 per head

SLAUGHTER COWS: Breaking  
 and Boning, (70-85% lean) 54.50-  
 61.50; high dressing 62.00-70.50.  
 Lean (85-90%) 51.00-58.00

SLAUGHTER STEERS: Choice 2  
 -3 1148-1510 lbs 112.25-144.00;  
 high dressing 114.50-116.50

SLAUGHTER BULLS: Yield  
 Grade 1-2 1420-2135 lbs 80.00-  
 89.00, high dressing 91.00-94.00

SLAUGHTER HEIFERS: Choice  
 2-3 1070-1330 lbs 110.00-111.75;  
 high dressing 115.25-116.00

**NORTH CENTRAL MISSOURI WEEKLY SUMMARY**

(Macon, Unionville, Green City, New Cambria)

Receipts: 4196 Week ago: 6312 Year ago: 2711

Compared to two weeks ago, steer and heifers mostly 5.00 to 8.00 higher. Slaughter cows steady.

FEEDER STEERS:

Medium and Large 1

500-600 lbs. 165.50-175.00  
 600-700 lbs. 159.50-169.50  
 700-750 lbs. 149.00-155.00  
 800-900 lbs. 135.50-142.85  
 900-950 lbs. 138.00-141.10

FEEDER HEIFERS:

Medium and Large 1

400-450 lbs. 158.00-162.50  
 500-600 lbs. 153.25-160.00  
 600-700 lbs. 143.00-151.00  
 700-800 lbs. 132.50-139.75

BRED COWS: Scarce

SLAUGHTER COWS: Breaking  
 and Boning (75-85% lean) 56.50-  
 67.50; high dressing 72.00-72.75.  
 Lean (85-90%) 51.50-58.00

COW & CALF PAIRS: Scarce

SLAUGHTER BULLS: Yield  
 Grade 1-2 1730-2010 lbs few  
 85.00-92.00

**SOUTHEAST MISSOURI WEEKLY SUMMARY**

(Patton, Farmington) (6/28/19)

Receipts: 1155 Week ago: 1332 Year ago: 2278

Compared to last week, steers and heifers unevenly steady. Slaughter cows and bulls 2.00 lower.

FEEDER STEERS:

Medium and Large 1

300-400 lbs. 159.00-179.00  
 400-500 lbs. 143.00-172.00  
 500-600 lbs. 134.00-160.00  
 600-700 lbs. 126.00-140.00  
 700-800 lbs. 118.00-132.50

FEEDER HEIFERS:

Medium and Large 1

300-400 lbs. 138.00-153.00  
 400-500 lbs. 125.00-155.00  
 500-600 lbs. 120.00-139.00  
 600-700 lbs. 116.50-123.00  
 700-800 lbs. 109.00-115.00

REPLACEMENT COWS: Medium  
 and Large 2 2-8 yrs 905-1450 lbs  
 3rd stage 735.00-810.00; 1st stage  
 700.00 per head

SLAUGHTER COWS: Breaking  
 and Boning (75-85% lean) 47.00  
 -59.00. high dressing 57.00-  
 66.00. Lean (85-90% lean) 41.00  
 -55.00

COW & CALF PAIRS: Medium  
 and Large 2 2-8 yrs 1040-1450 lbs  
 with baby to 300 lb calves 875.00-  
 1200.00 per pair

SLAUGHTER BULLS: Yield  
 Grade 1-2 1395-2070 lbs 70.00-  
 82.50. High dressing 78.50-  
 90.00

**EAST CENTRAL MISSOURI WEEKLY SUMMARY**

(Cuba, Vienna) (6/28/19)

Receipts: 3381 Week ago: 4538 Year ago: 1986

Compared to last week, steers and heifers 1.00 to 12.00 lower, with the greatest decline under 600 lbs. Slaughter cows 1.00 to 3.00 lower.

FEEDER STEERS:

Medium and Large 1

400-500 lbs. 155.00-170.00  
 500-600 lbs. 140.00-166.00  
 600-700 lbs. 136.00-160.50  
 700-800 lbs. 135.00-149.25  
 Pkg 817 lbs. 124.75

FEEDER HEIFERS:

Medium and Large 1

350-400 lbs. 145.00-153.50  
 400-500 lbs. 140.00-149.75  
 500-600 lbs. 132.50-148.50  
 600-700 lbs. 121.00-139.00  
 700-750 lbs. 118.00-122.00

REPLACEMENT COWS: Medium  
 and Large 1-2 2-8 yrs 1010-1475  
 lbs 2nd to 3rd stage 825.00-1135.00  
 per head

SLAUGHTER COWS: Break-  
 ing and Boning (70-85% lean)  
 50.00-62.00, high dressing 62.00  
 -66.00. Lean (85-90%) 43.00-  
 51.00

COW & CALF PAIRS: Scarce

SLAUGHTER BULLS: Yield  
 Grade 1-2 few 1465-1995 lbs  
 77.00-85.00; high dressing ind  
 89.50; low dressing ind 73.50

**NORTHWEST MISSOURI WEEKLY SUMMARY**

(St Joseph) (6/28/19)

Receipts: 700 Week Ago: 993 Year ago: 1303

Compared to last week, steer calves 2.00 to 5.00 lower. Heifer calves 10.00 to 12.00 lower, except some 400-450 lbs steady to 4.00 lower. No price comparison for yearlings. Slaughter cows and bulls steady to weak.

FEEDER STEERS:

Medium and Large 1

400-500 lbs. 164.00-178.00  
 500-600 lbs. 155.50-176.50  
 600-700 lbs. 141.00-154.25  
 900-1000 lbs. 127.00-131.00

FEEDER HEIFERS:

Medium and Large 1

300-400 lbs. 150.00-157.50  
 400-500 lbs. 130.00-158.00  
 500-600 lbs. 125.00-140.50  
 600-700 lbs. 123.50-128.50  
 Lot 711 lbs. 117.50

SLAUGHTER BULLS:  
 Yield Grade 1-2 1120-2110 lbs  
 78.00-88.00; few low dressing  
 65.00-75.00

SLAUGHTER COWS:  
 Breaking and Boning (70-85% lean)  
 56.00-64.00; high dressing few  
 64.50-65.50. Lean (85-90%) 45.00-  
 55.00

BRED COWS: Medium and  
 Large 1-2 5-8 yrs 1058-1270 lbs  
 3rd stage 1050.00-1200.00; 5-8  
 yrs 1175-1215 lbs 2nd stage  
 910.00-1150.00 per head

COW CALF PAIRS: Scarce

**MISSOURI WEEKLY DIRECT  
SLAUGHTER CATTLE REPORT**

Weekly Receipts: 280 Week ago: 0 Year ago: 240  
Trading from late last Friday remains light with dressed sales steady to 2.00 higher.

**LIVE STEERS & HEIFERS:** No Sales Reported  
**DRESSED STEERS & HEIFERS:** 1 load late last Fri 178.00

**GRADE AND WEIGHT (Grid):** (over 80 percent Choice)  
2 loads late last Fri 180.00. 2 loads Wed 180.00-182.00. 2 loads Fri 181.00

**NATIONAL DIRECT DELIVERED FEEDER PIG REPORT  
07/05/2019**

Supply includes 48% formulated prices.  
Early weaned pigs 10-12 lbs basis: Formula 31.69-46.50, weighted average 40.08. Cash 22.00-39.00, weighted average 31.92

Feeder Pigs 40 lbs basis: Cash 49.00-57.00, weighted average 51.76

**NATIONAL DAILY ETHANOL REPORT 07/05/2019**

Dried Distillers Grain (10% Moisture): 140.00-158.00  
Modified Wet Distillers Grain (50-55% Moisture): 78.00  
Wet Distiller Grain (65-70% Moisture): 45.00-55.00

**WHOLESALE FEEDSTUFFS PRICES  
(DOLLARS PER TON-BULK BASIS)**

Area	Soybean Hulls - Bulk	Soybean Meal 48% Solvent	Cottonseed Meal 41% Solvent	Meat Meal	Wheat Middlings
Kansas City	87.50	315.70	262.50	205.00	90.00
St. Louis	N/A	331.50	260.00	N/A	80.00

**Springfield Livestock Marketing Center  
Special Dairy Heifer Sale Report for 6/25/2019**

Receipts: 250 Last Month: 545 Last Year: 631

Springer heifers bred seven to nine months: Supreme 1050.00-1140.00. Approved - couple 950.00-1000.00. Medium ind Jersey 750.00. Common ind 650.00, ind crossbred 570.00. Heifers bred three to six months: Approved ind Jersey 1000.00, crossbreds 820.00-925.00. Medium 585.00-770.00, ind crossbred 675.00. Common ind crossbred 440.00. Open Heifers: Approved ind 275 lbs Jersey 290.00, couple 285 lbs Crossbred 240.00; 315-335 lbs Crossbreds 220.00-250.00, pkg 337 lbs Crossbreds 380.00; 445-500 lbs 400.00-420.00, 400-500 lbs Crossbreds few 300.00-420.00; pkg 538 lbs Crossbreds 400.00, ind 540 lbs Jersey 480.00; 720-770 lbs 600.00-635.00; couple 855 lbs 760.00. Medium couple 293 lbs 220.00; 450-460 lbs Crossbreds 250.00-300.00. Replacement Cows Fresh Cows: Approved 850.00-1000.00. Medium ind 750.00, couple Crossbreds 650.00-775.00, ind Jersey 600.00. Springer Cows: Approved ind 940.00. Medium 675.00-850.00. Cows bred three to six months: Approved ind 850.00. Medium 610.0-740.00. Common couple Crossbreds 470.00-475.00. Baby Calves: Holstein heifers ind 140.00. Crossbred heifers ind 130.00. Holstein bulls 90.00-100.00, small 70.00-75.00. Jersey bulls ind 70.00

**Buffalo Livestock Market- Sheep and Goat Auction 6/26/19**

Receipts: 756 Last Reported: 1282 (All prices CWT unless otherwise stated.) SHEEP: Feeder lambs: Medium and Large 1-2 40-60 lbs. 130.00-143.00. Hair Medium and Large 1 30-40 lbs 150.00-160.00; 40-50 lbs 134.00-147.50; replacements pkg 44 lbs 205.00. Medium and Large 1-2 pkg 29 lbs 155.00; 30-40 lbs 137.00-152.50; 40-50 lbs 132.50-140.00; 50-60 lbs 130.00-135.00. Slaughter lambs woolled and shorn Choice and Prime 1 pkg 113 lbs 137.50. Good and Choice 1 few 100-105 lbs 143.00-144.00 Good and Choice 1-2 few 60-70 lbs 130.00-135.00. Woolled Good and Choice 1-2 pkg 56 lbs 130.00; 70-90 lbs 125.00-130.00. Hair Choice and Prime 1 60-65 lbs 141.00-161.00. Good and Choice 1 pkg 72 lbs 152.00. Good and Choice 1-2 50-60 lbs 120.00-132.00; 60-70 lbs 130.00-149.00; 70-80 lbs 125.00-130.00. Good and Choice 2 60-70 lbs 117.00-128.00. Utility and Good 1-3 pkg 66 lbs 80.00. Slaughter Ewes Cull and Utility 1-2 80-90 lbs 42.00-55.00; 120-125 lbs 35.00-46.00. Hair Good and Choice 1-2 90-120 lbs 120.00-125.00. Utility and Good 1-2 80-100 lbs 75.00-87.50. Cull and Utility 1-2 80-85 lbs 41.00-52.50. Replacements: Families Medium and Large 1 pkg 1-2 yrs 95 lbs with baby lambs 130.00 per family. GOATS: Feeder kids Selection 1-2 30-40 lbs 175.00-195.00. Selection 2 30-40 lbs 145.00-165.00. Selection 2-3 33 lbs 115.00-120.00. Slaughter kids Selection 1 50-65 lbs 235.00-260.00. Selection 1-2 40-60 lbs 200.00-225.00; 60-70 lbs 205.00-230.00. Selection 2 40-70 lbs 180.00-195.00. Selection 2-3 40-50 lbs 165.00-177.50; 60-70 lbs 140.00-150.00. Slaughter Does Selection 1 pkg 68 lbs 145.00; 80-90 lbs 105.00-122.50; 100-120 lbs 115.00-135.00. Slaughter bucks 115-130 lbs 130.00-145.00.

**WEEKLY COMMODITY GRAIN FUTURES TRENDS**

Compared to last Friday: Soybeans 0.27 to 0.29 lower, Wheat 0.09 to 0.13 lower, Corn 0.09 to 0.14 higher, KC Wheat 0.12 to 0.19 lower, Soybean Meal 9.30 to 10.50 lower.

**Daily Grain Futures Closes**

	Mon.	Tues.	Wed.	Thu.	Fri.
Soybeans					
Jul	885 1/2	876 1/4	885 1/4	Holiday	872 1/4
Aug	889 3/4	879 3/4	889 3/4		876
Sep	896 1/4	886	898 1/4		882 1/4
Nov	908 1/2	898 3/4	908 3/4		894 1/2
Jan	920 3/4	910 1/2	920 1/2		906 1/4
Wheat					
Jul	514	503 1/2	518 1/2	Holiday	519 1/4
Sep	511 3/4	503 1/4	514		515
Dec	524 1/4	515 1/2	525 1/4		525 1/2
Mar	536	528 3/4	537 1/4		537 1/4
May	541 3/4	535 1/2	542 3/4		541 3/4
Corn					
Jul	412	413 1/2	433	Holiday	434
Sep	415 1/2	419	436 3/4		438 1/4
Dec	422 1/2	426	441 1/4		442 1/4
Mar	431 3/4	434 3/4	448 1/4		449
May	436	438 3/4	451 3/4		452 1/2
KC Wheat					
Jul	434 3/4	424	436	Holiday	439
Sep	444	432 1/2	443 3/4		445 1/4
Dec	467	455	465 1/2		466 1/2
Mar	488 1/4	476 1/4	486 1/2		486 1/2
May	500 1/2	489	499 1/2		499 1/4
SB Meal					
Jul	304.80	303.50	306.00	Holiday	303.80
Aug	307.20	305.70	308.10		305.80
Sep	309.10	307.70	310.10		307.50
Oct	311.00	309.50	311.80		309.30
Dec	314.60	313.00	315.10		312.40

**WEEKLY COMMODITY FUTURES TRENDS**

Compared to last week: Live Cattle 2.07 to 2.65 higher, Lean Hogs nearby 0.02 to 1.05 higher, others 0.78 to 1.15 lower, Feeder Cattle 1.97 to 2.88 higher.

**Daily Futures Closes**

	Mon.	Tues.	Wed.	Thu.	Fri.
Cattle					
Aug	104.10	104.10	105.45	Holiday	107.00
Oct	105.52	105.35	106.30		108.07
Dec	110.67	110.35	110.92		112.32
Feb	114.65	114.45	114.87		116.22
Apr	116.85	116.62	117.15		118.30
Lean Hogs					
Jul	72.57	73.72	73.55	Holiday	72.12
Aug	78.70	78.97	78.37		77.05
Oct	73.20	73.05	72.80		70.07
Dec	74.02	73.40	72.65		70.00
Feb	78.82	78.22	77.20		75.20
Fdr Cat					
Aug	137.02	138.37	136.57	Holiday	138.82
Sep	137.62	138.82	136.95		138.70
Oct	137.90	139.30	137.60		138.90
Nov	138.30	139.87	138.10		139.22
Jan	136.72	138.17	136.70		137.95
Milk					
Jul	17.47	17.37	17.30	Holiday	17.38
Aug	17.90	17.90	17.82		17.89
Sep	17.95	17.98	17.91		18.03

**WESTERN CORNBELT DAILY DIRECT PRIOR DAY HOG REPORTS FOR 07/05/2019**

**BARROWS AND GILTS:** Negotiated Purchase 6002 head  
Base Price Range: 58.00-68.00, weighted average 67.61

**SOWS:** 3972 head  
300-500 lbs. 21.00-43.25  
Over 500 lbs. 26.00-48.45

WEEKLY MARKET SUMMARY  
 (USPS 597250)  
 To be published weekly by the  
 Missouri Department of Agriculture  
 1616 Missouri Blvd.  
 Jefferson City, MO 65109

Postmaster: Send address changes to:  
 Missouri Department of Agriculture  
 P.O. Box 630  
 Jefferson City, MO 65102

Periodicals postage paid at  
 Jefferson City, Missouri

**Market News Hotline**  
**1-573-522-9244**

**July 08, 2019**

**MISSOURI GRAIN WEEKLY TRENDS**

Weekly Trends: Soybeans 0.06 to 0.13 lower, Wheat 0.04 to 0.42 lower, Corn 0.10 to 0.16 higher, Sorghum 0.29 to 0.38 higher.

Area	#1 Soybeans	#2 Soft Wheat	#2 Corn	#2 Grain Sorghum
<u>Kansas City</u>				
Friday**	8.55-8.59	5.18	4.15	—
Monday	8.44-8.49	5.01-5.11	4.10	—
Tuesday	8.30-8.39	4.93-5.03	4.19-4.34	6.83
Wednesday	8.40-8.49	5.04-5.14	4.31-4.52	7.16
Thursday	Holiday			
Friday	Holiday			
<u>St. Louis</u>				
Friday**	9.04-9.07	5.53	4.34-4.36	7.58-8.12
Monday	8.89-9.03	5.22-5.29	4.28-4.30	7.01-7.44
Tuesday	8.80-8.87	5.00-5.13	4.33	7.46-8.19
Wednesday	8.96-9.01	5.11-5.14	4.44-4.48	7.87-8.50
Thursday	Holiday			
Friday	Holiday			
<u>Central</u>				
Friday**	8.39-8.40	5.17-5.18	4.00	—
Monday	8.24-8.26	5.01-5.04	3.93-4.00	—
Tuesday	8.14-8.16	4.83-4.93	4.04	—
Wednesday	8.24-8.25	4.94-5.04	4.21-4.22	—
Thursday	Holiday			—
Friday	Holiday			—
<u>S.E. MO</u>				
Friday**	8.99-9.13	5.48-5.57	4.26-4.33	—
Monday	8.67-9.00	5.00-5.31	4.03-4.33	—
Tuesday	8.81-8.89	5.15	4.21-4.37	—
Wednesday	8.91-8.99	5.25	4.38-4.51	—
Thursday	Holiday			—
Friday	Holiday			—

**MISSOURI CROP PROGRESS REPORT 07/01/19**

Temperatures last week averaged 76.9 degrees, 1.2 degrees above normal. Precipitation averaged 0.98 inches statewide, 0.03 inches above normal. There was 5.1 days suitable for fieldwork for the week ending June 30, 2019. Topsoil moisture supply was rated 2 percent short, 79 percent adequate, and 51 percent surplus. Subsoil moisture supply was rated 74 percent adequate, and 26 percent surplus. Corn planted progressed to 95 percent this week, while corn emerged progressed to 89 percent. Corn silking was at 6 percent this week, 37 percentage points behind last year. Corn condition was rated at 8 percent very poor, 21 percent poor, 42 percent fair, 26 percent good, and 3 percent excellent. Soybeans planted progressed to 79 percent, 19 percentage points behind last year, while soybeans emerged progressed to 63 percent. Soybean condition was rated at 4 percent very poor, 13 percent poor, 45 percent fair, 36 percent good, and 2 percent excellent. Cotton planted progressed to 95 percent, while cotton squaring progressed to 12 percent. Cotton condition was rated at 7 percent very poor, 9 percent poor, 52 percent fair, and 32 percent good. Rice emerged progressed to 95 percent. Rice condition was rated at 3 percent very poor, 6 percent poor, 46 percent fair, 34 percent good, and 11 percent excellent. Winter wheat harvested progressed to 52 percent, 30 percentage points behind last year. Winter wheat condition was rated at 3 percent very poor, 11 percent poor, 46 percent fair, 38 percent good, and 2 percent excellent. Alfalfa first cutting progressed to 93 percent. Alfalfa second cutting progressed to 24 percent, 27 percentage points behind last year. Other Hay first cutting progressed to 61 percent, 23 percentage points behind last year.

(PRICES PER BU. EXCEPT GR. SORG. PER CWT)  
 \*NEW CROP \*\*PREVIOUS WEEK'S PRICES