

# Weekly Market Summary

Published by:  
**Missouri Department of Agriculture**  
**Ag Business Development Division**  
**Market News Program**



Chris Chinn, Director  
 Davin Althoff, Division Director  
 Tony Hancock, Editor  
 agmarketnews.mo.gov  
<http://www.ams.usda.gov/marketnews.htm>

Michael L. Parson, Governor

Volume XXXX, Number 4 ♦ P.O. Box 630, Jefferson City, MO 65102 ♦ (573) 751-4211 ♦ Friday, January 24, 2020

## MISSOURI WEEKLY FEEDER CATTLE WEIGHTED AVERAGE REPORT

Receipts: 21,006 Week ago: Year ago: 16,585  
 Steers and Heifers Medium and Large 1—Weighted average weights and prices

### STEERS: Medium and Large 1

275 lbs. 180.41	477 lbs. 179.43	678 lbs. 149.49	871 lbs. 138.95
330 lbs. 177.43	528 lbs. 170.21	721 lbs. 146.30	910 lbs. 141.55
377 lbs. 189.96	572 lbs. 162.42	770 lbs. 143.01	1026 lbs. 126.00
423 lbs. 182.41	625 lbs. 152.63	825 lbs. 140.42	

### HEIFERS: Medium and Large 1

291 lbs. 148.94	478 lbs. 149.88	677 lbs. 135.89	867 lbs. 129.61
328 lbs. 153.22	523 lbs. 143.43	725 lbs. 133.80	
381 lbs. 158.17	576 lbs. 139.00	768 lbs. 131.62	
426 lbs. 152.38	629 lbs. 137.55	819 lbs. 127.29	

### Missouri Stocker Formula for 01/24/2020

Friday's **Missouri Stocker Formula** consists of **4474 head** with a weighted average weight of **551.93 lbs.** and a price value of **159.88**, 1.98 lower than last Friday.

This a rolling seven day calculated weighted value which combines all Feeder Steers reported by MDA/USDA Market News Service weighing from 400-649 lbs. in the Medium and Large 1 and Medium and Large 1-2 frame and muscle classifications, including all comment cattle except Brahman X.

### SOUTH CENTRAL MISSOURI WEEKLY SUMMARY

(West Plains, Ava)

Receipts: 4072 Week ago: 5424 Year Ago: 2142  
 Compared to last week, feeders under 600 lbs 2.00 to 5.00 higher, spots 7.00 higher, heavier weights uneven from 2.00 lower to 2.00 higher. Slaughter cows and bulls 3.00 to 6.00 higher.

#### STEERS:

Medium and Large 1

350-400 lbs.	185.00-195.00
400-500 lbs.	170.00-187.00
500-600 lbs.	154.00-181.00
600-700 lbs.	139.00-157.00
700-800 lbs.	138.00-151.00
800-900 lbs.	135.00-143.00

#### Holsteins:

Large 3

Scarce

#### HEIFERS:

Medium and Large 1

300-400 lbs.	150.00-165.00
400-500 lbs.	138.00-157.00
500-600 lbs.	132.50-146.00
600-700 lbs.	130.00-137.00
700-750 lbs.	132.00-135.00
Part load 833 lbs.	130.50

#### SLAUGHTER COWS:

Breaking and Boning (70-85% lean) 47.00-63.00, high dressing 58.00-71.00, low dressing 41.00-55.00. Lean (85-90%) 35.00-47.00

#### REPLACEMENT COWS:

Medium and Large 1 pkg 2-8 yrs 1208 lbs 2nd to 3rd stage 1400.00. Medium and Large 1-2 2-8 yrs 1123-1535 lbs 2nd to 3rd stage 975.00-1200.00 per head

#### SLAUGHTER BULLS:

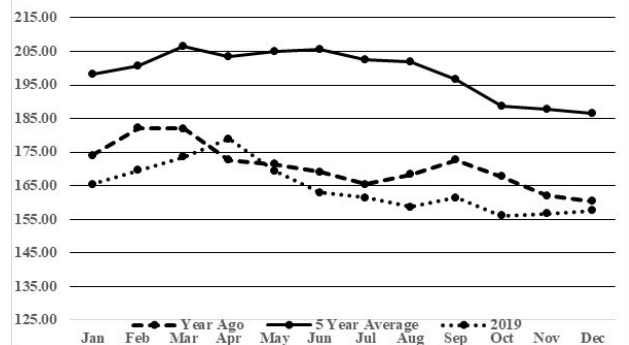
Yield Grade 1-2 1080-2135 lbs. 73.00-84.00; high dressing 84.00-94.00, low dressing 52.50-73.00

#### COW & CALF PAIRS:

Medium and Large 1-2 2-8 yrs 1150-1320 lbs with 150-300 lb calves 1125.00-1175.00 per pair

### Historical Feeder Steers

#### Medium and Large 1 500-600 lbs. Weighted Average



\*Graph is updated the first Friday of each month.

### SOUTHWEST MISSOURI WEEKLY SUMMARY

(Joplin and Springfield)

Feeder Cattle Receipts: 7197 Week Ago: 7619 Year ago: 3457  
 Cow and Bull Receipts: 1425 Week ago: 1347 Year ago: 1249  
 Compared to last week, feeders under 500 lbs steady to 4.00 higher, heavier weights steady, except steers over 800 lbs 2.00 to 4.00 lower. Slaughter cows 2.00 to 10.00 higher, with the greatest advance on boning and lean cows late week. Slaughter bulls 3.00 to 8.00 higher, greatest advance late week.

#### STEERS:

Medium and Large 1

300-400 lbs.	194.00-210.00
400-500 lbs.	170.75-208.00
500-600 lbs.	149.00-177.00
600-700 lbs.	139.00-154.00
700-800 lbs.	137.00-152.85
800-900 lbs.	137.00-142.75

#### HOLSTEINS:

Large 3

450-500 lbs.	70.00
Pkg 588 lbs.	75.00
Load 700 lbs.	88.00
Lot 868 lbs.	83.75
Pkg 1148 lbs.	79.25
Pkg 1183 lbs.	65.00

#### REPLACEMENT COWS:

Medium and Large 1 2-8 yrs 1003-1379 lbs 2nd to 3rd stage 1275.00-1675.00, 1st stage 1100.00-1475.00. Medium and Large 1-2 2-8 yrs 900-1365 lbs 2nd to 3rd stage 860.00-1275.00, 1st stage 800.00-975.00 per head

#### HEIFERS:

Medium and Large 1

300-400 lbs.	151.00-168.00
400-500 lbs.	138.00-161.00
500-600 lbs.	125.00-154.50
600-700 lbs.	123.50-140.75
700-800 lbs.	127.00-137.00
800-900 lbs.	133.00-135.00

#### SLAUGHTER COWS:

Breaking and Boning (70-85% lean) 43.00-63.00, high dressing 48.00-73.50.

#### SLAUGHTER BULLS:

Yield Grade 1-2 1120-2373 lbs 74.00-82.50; high dressing 80.50-91.00, low dressing 60.50-75.00

#### COW & CALF PAIRS:

Medium and Large 1 2-8 yrs 1070-1090 lbs rebred 1st or 2nd stage with 300-450 lb calves 1960.00-2010.00. Medium and Large 1-2 2-8 yrs 925-1090 lbs some rebred 1st or 2nd stage with 150-300 lb calves 1350.00-1525.00 per pair

The Weekly Market Summary, as well as historical summaries, are available on our website <https://agmarketnews.mo.gov/summaries>

**WEST CENTRAL MISSOURI WEEKLY SUMMARY**

(Sedalia, Kingsville, Windsor, Butler)

Receipts: 3931 Week ago: 3538 Year ago: 4980

Compared to last week, steers and heifers steady to 5.00 lower. Slaughter cows firm to 6.00 higher.

FEEDER STEERS:

Medium and Large 1

400-500 lbs. 174.00-190.00  
 500-600 lbs. 155.50-185.00  
 600-700 lbs. 143.75-163.00  
 700-800 lbs. 140.00-151.00  
 800-900 lbs. 133.00-142.50

FEEDER HEIFERS:

Medium and Large 1

400-500 lbs. 152.00-163.50  
 500-600 lbs. 135.00-154.50  
 600-700 lbs. 130.00-141.50  
 700-800 lbs. 122.50-135.50  
 800-900 lbs. 119.75-127.00

SLAUGHTER BULLS: Yield  
 Grade 1-2 1325-1935 lbs 66.00-  
 86.50; low dressing few 66.50-  
 70.00

SLAUGHTER COWS: Break-  
 ing and Boning (70-85% lean)  
 45.00-63.50, high dressing 58.00-  
 71.50. Lean (85-90%) 40.00-  
 50.50

REPLACEMENT COWS: Medium  
 and Large 1-2 2-8 yrs 1162-1485 lbs  
 2nd to 3rd stage 1000.00-1400.00  
 per head

COW & CALF PAIRS: Medi-  
 um and Large 1 2-8 yrs 1150-  
 1350 lbs rebred 1st stage  
 1650.00-1925.00 per pair

**NORTHEAST MISSOURI WEEKLY SUMMARY**

(Bowling Green, Kingdom City, Palmyra)

Receipts: 3776 Week ago: 3724 Year ago: 3219

Compared to last week, steers steady to firm, except the 550 to 700 lbs steady to 3.00 higher. Heifers steady to 2.00 lower. Slaughter cows steady to 3.00 higher.

FEEDER STEERS:

Medium and Large 1

400-500 lbs. 162.00-190.00  
 500-600 lbs. 156.00-181.50  
 600-700 lbs. 146.00-163.00  
 700-800 lbs. 141.00-152.50  
 Load 908 lbs. 143.25

FEEDER HEIFERS:

Medium and Large 1

400-500 lbs. 150.00-162.00  
 500-600 lbs. 142.00-150.00  
 600-700 lbs. 138.00-141.50  
 700-750 lbs. 136.00-141.00

BRED COWS: Medium and Large  
 1 2-4 yrs 1037-1226 lbs 3rd stage  
 1680.00-1860.00; 2-8 yrs 1170-  
 1424 lbs 3rd stage 1480.00-  
 1660.00 per head

SLAUGHTER COWS: Breaking  
 and Boning, (70-85% lean) 51.00-  
 60.75; high dressing 58.00-66.50.  
 Lean (85-90%) 44.00-54.00

SLAUGHTER STEERS: Select  
 and Choice 1-3 118.00-122.50.  
 Select and Choice 2-3 118.25-  
 121.25

SLAUGHTER BULLS: Yield  
 Grade 1-2 1270-2370 lbs 76.50-  
 84.00; low dressing 64.00-75.00

SLAUGHTER HEIFERS: Select  
 and Choice 1-2 115.00-117.50.  
 Select and Choice 2-3 115.00-  
 119.25

**NORTH CENTRAL MISSOURI WEEKLY SUMMARY**

(Macon, Unionville, Green City, New Cambria)

Receipts: 2064 Week ago: 3517 Year ago: 1600

Compared to last week, steers and heifers steady. Slaughter cows steady.

FEEDER STEERS:

Medium and Large 1

400-500 lbs. 177.00-195.00  
 500-600 lbs. 158.00-182.50  
 600-700 lbs. 152.75-162.50  
 700-800 lbs.. 142.00-160.00

FEEDER HEIFERS:

Medium and Large 1

450-500 lbs. 147.00-148.00  
 500-600 lbs. 143.00-152.00  
 600-700 lbs. 138.75-145.75  
 Pkg 712 lbs. 138.00

BRED COWS: Medium and  
 Large 1-2 2-8 yrs 1301-1377 lbs  
 3rd stage 1275.00-1425.00 per  
 head

SLAUGHTER COWS: Breaking  
 and Boning (75-85% lean) 50.00-  
 58.50; high dressing 58.00-65.00.  
 Lean (85-90%) 44.00-54.00

COW & CALF PAIRS: Scarce

SLAUGHTER BULLS: Yield  
 Grade 1-2 1605-2470 lbs few  
 77.25-79.00; few low dressing  
 66.50-75.00

**SOUTHEAST MISSOURI WEEKLY SUMMARY**

(Patton, Farmington)

Receipts: 1224 Week ago: 1502 Year ago: 562

Compared to last week, steers and heifers uneven from 2.00 lower to 8.00 higher. Slaughter cows and bulls steady.

FEEDER STEERS:

Medium and Large 1

300-400 lbs. 150.00-171.00  
 400-500 lbs. 153.00-171.00  
 500-600 lbs. 141.00-171.00  
 600-700 lbs. 135.00-155.50  
 700-800 lbs. 128.00-143.00

FEEDER HEIFERS:

Medium and Large 1

300-400 lbs. 127.00-155.00  
 400-500 lbs. 130.00-145.00  
 500-600 lbs. 123.00-138.00  
 600-700 lbs. 118.00-130.50  
 700-750 lbs. 111.00-127.72

REPLACEMENT COWS: Medium  
 and Large 2 2-8 yrs 855-1495 lbs  
 1st to 3rd stage 625.00-1125.00 per  
 head

SLAUGHTER COWS: Breaking  
 and Boning (75-85% lean) 37.00  
 -50.00. high dressing 47.00-  
 64.50. Lean (85-90% lean) 25.00  
 -40.00

COW & CALF PAIRS: Scarce

SLAUGHTER BULLS: Yield  
 Grade 1-2 1120-2200 lbs 58.00-  
 74.00; high dressing 74.50-  
 78.00; low dressing 40.00-55.00

**EAST CENTRAL MISSOURI WEEKLY SUMMARY**

(Cuba, Vienna)

Receipts: 1081 Week ago: 707 Year ago: 1653

Compared to last week, steers and heifers steady on a light test. Slaughter cows 1.00 to 4.00 higher.

FEEDER STEERS:

Medium and Large 1

400-500 lbs. 159.50-181.50  
 500-600 lbs. 151.00-176.50  
 600-700 lbs. 139.25-159.25  
 700-800 lbs. 132.00-143.25  
 800-850 lbs. 133.50-141.90

FEEDER HEIFERS:

Medium and Large 1

450-500 lbs. 149.50-154.50  
 500-600 lbs. 132.00-147.00  
 600-700 lbs. 129.00-135.25  
 Pkg 724 lbs. 136.00  
 Pkg 820 lbs. 124.00

REPLACEMENT COWS: Medium  
 and Large 1-2 2-8 yrs 1090-1525  
 lbs. 1st to 3rd stage 875.00-1240.00  
 per head

SLAUGHTER COWS: Break-  
 ing and Boning (70-85% lean)  
 47.00-57.50. Lean (85-90%)  
 42.00-46.00

COW & CALF PAIRS: Short and  
 solid to broken mouth 1140-1325 lbs  
 rebred 1st stage with 150-300 lb  
 calves 1000.00-1270.00 per pair

SLAUGHTER BULLS: Yield  
 Grade 1-2 1560-2350 lbs ind  
 72.00; low dressing few 63.00-  
 64.00

**NORTHWEST MISSOURI WEEKLY SUMMARY**

(St Joseph)

Receipts: 1796 Week Ago: 1796 Year ago: 0

Compared to last week, steers steady to 2.00 higher, except 500 to 600 lbs 1.00 to 2.00 lower. Heifers under 550 lbs 1.00 to 3.00 higher, over 550 lbs steady to 2.00 higher, spots 5.00 higher. (01/17/20)

FEEDER STEERS:

Medium and Large 1

400-500 lbs. 171.00-190.50  
 500-600 lbs. 150.00-176.50  
 600-700 lbs. 144.00-162.50  
 700-800 lbs. 142.00-154.25  
 Pkg 826 lbs. 140.00

FEEDER HEIFERS:

Medium and Large 1

400-500 lbs. 142.50-152.00  
 500-600 lbs. 133.25-149.25  
 600-700 lbs. 130.00-139.75  
 700-800 lbs. 130.00-141.50

SLAUGHTER BULLS:

Scarce

SLAUGHTER COWS:

Scarce

BRED COWS: ScarceCOW CALF PAIRS: Scarce

**MISSOURI WEEKLY DIRECT  
SLAUGHTER CATTLE REPORT**

Weekly Receipts: 320 Week ago: 560 Year ago: 600  
Trading this week light with grid dressed sales steady.

**LIVE STEERS & HEIFERS:** DRESSED STEERS & HEIFERS:  
No sales reported 2 loads Thu 199.00

**GRADE AND WEIGHT (Grid):** 3 loads Thu 200.00; 3 loads late Thu 202.00

**NATIONAL DIRECT DELIVERED FEEDER PIG REPORT  
01/24/2020**

Supply includes 53% formulated prices.  
Early weaned pigs 10-12 lbs basis: Formula 40.50-66.73, weighted average 51.14. Cash 49.00-68.00, weighted average 59.15  
Feeder Pigs 40 lbs basis: Cash 63.00-66.00, weighted average 65.45

**WEEKLY LIVESTOCK SLAUGHTER 01/24/2020**

	Cattle	Hogs	Sheep
Week to Date:	647,000	2,720,000	37,000
Last Week:	631,000	2,500,000	38,000
Last Year:	608,000	2,487,000	38,000

**WHOLESALE FEEDSTUFFS PRICES  
(DOLLARS PER TON-BULK BASIS)**

Area	Soybean Hulls - Bulk	Soybean Meal 48% Solvent	Cottonseed Meal 41% Solvent	Meat Meal	Wheat Middlings
Kansas City	115.00	285.10	277.50	225.00	140.00
St. Louis	N/A	312.50	275.00	N/A	125.00

**Springfield Livestock Marketing Center  
Special Dairy Heifer Sale Report for 12/10/2019**  
Receipts: 652 Last Month: 826 Last Year: 239

Springer Heifers bred seven to nine months: Supreme 1000.00-1360.00. Approved 800.00- 975.00, crossbreds 700.00-875.00. Medium 600.00-750.00, Jerseys 600.00-750.00, crossbreds 550.00-600.00. Common 350.00- 550.00. Heifers bred three to six months: Supreme 950.00-1050.00, crossbreds 935.00-1025.00. Approved 800.00-935.00, crossbreds 700.00-900.00. Medium 550.00-790.00, Jerseys 600.00-750.00, crossbreds 575.00-650.00. Common 450.00-500.00. Heifers bred one to three months: Approved ind 850.00. Open Heifers: Approved: 198-200 lbs few crossbreds 135.00-150.00; 382-395 lbs pkg 7 at 382 lbs 230.00; 410-490 lbs 220.00-400.00, pkg 4 Jerseys 499 lbs 310.00, ind crossbred 270.00; 522-591 lbs 325.00-370.00, crossbreds 250.00-400.00; 665-690 lbs 400.00-470.00, pkg 3 Jerseys 690 lbs 530.00. Replacement Cows: Fresh Cows: Supreme few 1025.00-1150.00. Approved 800.00-950.00. Medium 675.00-975.00. Common 320.00-650.00. Milking Cows: Supreme 1025.00-1400.00. Approved 800.00-950.00. Medium 600.00-775.00. Common 275.00-550.00. Springer Cows: Supreme few 1000.00-1125.00. Approved 825.00-975.00. Medium 625.00-800.00. Common 500.00-580.00, few crossbreds 610.00. Cows bred one to six months: Supreme 975.00-1075.00. Approved 750.00-850.00. Medium 525.00-750.00. Common 350.00-500.00. Baby Calves: Holstein heifers few 15.00-50.00. Holstein bulls 35.00-50.00, small 15.00-30.00. Crossbred heifers few 25.00-45.00. Crossbred bulls 60.00-65.00, small 22.50-25.00. Beef cross heifers 140.00-210.00. Beef cross bulls 180.00-235.00, small 60.00-140.00

**Fruitland Livestock Auction Sheep and Goat Auction 01/18/2020**

Receipts: 334 (All prices CWT unless otherwise noted.) SHEEP: Feeder lambs Hair Medium and Large 1-2 30-40 lbs 252.50-272.50. Medium 2-3 pkg 25 lbs 217.50. Slaughter lambs Hair Choice and Prime 1 part load 52 lbs high dressing 275.00. Choice and Prime 1-2 40-50 lbs 260.00-270.00, high dressing 277.00; 50-60 lbs 262.50-265.00, high dressing 277.50-280.00; 60 lbs 260.00-272.50, high dressing 275.00; 70 lbs 267.50-270.00. Choice 1-2 lot 51 lbs 250.00; pkg 74 lbs 252.50. Slaughter ewes Good 1-2 140-145 lbs 90.00; 150-175 lbs 85.00. Utility and Good 1-2 pkg 88 lbs 75.00. Utility and Good 1-3 pkg 88 lbs 65.00. Replacement ewes hair Medium and Large 1-2 2-4 yrs 110-120 lbs exposed 110.00-117.50; 2-4 yrs pkg 158 lbs exposed 112.50. GOATS: Feeder kids Selection 1-2 30-40 lbs 265.00. Slaughter kids pkg 45 lbs high dressing 287.50. Selection 1-2 pkg 67 lbs 270.00. Selection 2 pkg 58 lbs 267.50; pkg 78 lbs 240.00. Selection 3 pkg 55 lbs low dressing 217.50. Replacement does Selection 1-2 2-4 yrs 95-165 lbs exposed 150.00-170.00.

**WEEKLY COMMODITY GRAIN FUTURES TRENDS**

Compared to last Friday: Soybeans 0.24 to 0.28 lower, Wheat up to 0.03 higher, Corn 0.02 to 0.05 lower, KC Wheat 0.08 to 0.09 lower, Soybean Meal 2.30 to 3.10 lower.

**Daily Grain Futures Closes**

	Mon.	Tues.	Wed.	Thu.	Fri.
Soybeans					
Mar	Holiday	916	913 3/4	909 1/2	902
May		929 3/4	927 1/2	923 1/4	915 3/4
Jul		943 1/2	941 1/4	937	929 1/2
Aug		948	946	941 3/4	934 1/4
Sep		947 1/2	945 3/4	942	934 1/4
Wheat					
Mar	Holiday	581 1/2	577 3/4	580 1/2	573 1/2
May		581	577 1/4	579	572 1/2
Jul		580 1/2	576 3/4	578 3/4	570
Sep		585 1/2	581 3/4	583 1/2	578 1/4
Dec		593 1/2	589 3/4	591	586 1/4
Corn					
Mar	Holiday	387 1/2	388 3/4	393 3/4	387 1/4
May		393 1/2	394 1/4	398 1/2	392 3/4
Jul		399 1/4	399 1/4	403 1/4	397 3/4
Sep		398 3/4	398	400 3/4	395 3/4
Dec		401 1/2	400 3/4	403 1/4	398 1/4
KC Wheat					
Mar	Holiday	500	492 1/2	492 1/4	486
May		507 1/4	499 3/4	499 3/4	493 1/2
Jul		514 1/2	507	506 3/4	500 3/4
Sep		522 1/4	514 3/4	514 1/2	508 3/4
Dec		532 3/4	525	524 1/2	519 1/4
SB Meal					
Mar	Holiday	299.10	297.90	298.90	298.30
May		303.80	302.50	303.20	302.50
Jul		303.50	306.90	307.70	306.80
Aug		310.20	308.40	309.20	308.30
Sep		311.20	309.50	310.40	309.50

**WEEKLY COMMODITY FUTURES TRENDS**

Compared to last week: Live Cattle 1.50 to 3.18 lower, Lean Hogs 0.45 to 0.95 lower, Feeder Cattle 3.50 to 5.33 lower.

**Daily Futures Closes**

	Mon.	Tues.	Wed.	Thu.	Fri.
Cattle					
Feb	Holiday	126.37	126.17	124.67	124.85
Apr		127.22	126.77	124.17	124.30
Jun		119.17	118.45	116.32	116.02
Aug		116.47	115.77	113.85	113.62
Oct		118.82	118.45	116.52	116.15
Lean Hogs					
Feb	Holiday	67.35	67.55	68.50	67.22
Apr		73.82	74.52	75.35	73.45
May		80.35	80.85	81.77	79.97
Jun		86.65	87.10	87.82	86.40
Jul		87.50	87.97	88.50	87.15
Fdr Cat					
Jan	Holiday	145.07	143.92	142.77	141.85
Mar		144.67	143.05	140.52	139.67
Apr		147.55	146.02	143.47	142.50
May		149.32	147.92	145.15	144.47
Aug		155.00	154.20	151.72	151.30
Milk					
Jan	Holiday	17.03	17.05	17.00	17.04
Feb		17.54	17.80	17.98	17.98
Mar		17.76	17.95	18.17	18.22

**WESTERN CORNBELT DAILY DIRECT PRIOR DAY HOG REPORTS FOR 01/24/2020**

**BARROWS AND GILTS:**

Base Price weighted average 51.50, 5 day rolling average 51.63

**SOWS:** 3,495 head

300-500 lbs. 10.00-30.00  
Over 500 lbs. 18.00-29.37

WEEKLY MARKET SUMMARY  
 (USPS 597250)  
 To be published weekly by the  
 Missouri Department of Agriculture  
 1616 Missouri Blvd.  
 Jefferson City, MO 65109

Postmaster: Send address changes to:  
 Missouri Department of Agriculture  
 P.O. Box 630  
 Jefferson City, MO 65102

Periodicals postage paid at  
 Jefferson City, Missouri

**Market News Hotline**  
**1-573-522-9244**

**January 24, 2020**

**MISSOURI GRAIN WEEKLY TRENDS**

Compared to last Friday, Soybeans 0.21 to 0.28 lower, Wheat 0.02 to 0.03 higher, Corn 0.02 lower to 0.04 higher, Sorghum 0.04 lower.

Area	#1 Soy-beans	#2 Soft Wheat	#2 Corn	#2 Grain Sorghum
<u>Kansas City</u>				
Friday**	9.10-9.24	5.56-5.70	3.99	6.32
Monday	Holiday			
Tuesday	8.96-9.11	5.67-5.81	3.87-3.96	6.28
Wednesday	8.94-9.08	5.62-5.78	3.97-3.99	6.32
Thursday	8.94-9.04	5.64-5.81	4.02-4.04	6.41
Friday	8.87-8.97	5.58-5.73	3.97	6.28
<u>St. Louis</u>				
Friday**	9.49-9.50	6.41	4.08-4.09	7.39
Monday	Holiday			
Tuesday	9.35-9.36	6.52	4.06	7.35
Wednesday	9.33-9.35	6.48	4.08	7.37
Thursday	9.29-9.30	6.51	4.12-4.19	7.46
Friday	9.23	6.44	4.11-4.12	7.35
<u>Central</u>				
Friday**	8.89-8.90	5.50-5.51	3.84	—
Monday	Holiday			—
Tuesday	8.76	5.61-5.62	3.82-3.83	—
Wednesday	8.73-8.74	5.57-5.58	3.83-3.84	—
Thursday	8.69-8.70	5.60-5.61	3.88-3.89	—
Friday	8.62	5.53-5.54	3.82	—
<u>S.E. MO</u>				
Friday**	9.31-9.47	—	3.92-4.07	—
Monday	Holiday	—	—	—
Tuesday	9.17-9.34	—	3.90-4.05	—
Wednesday	9.15-9.34	—	3.95-4.10	—
Thursday	9.10-9.30	—	4.00-4.15	—
Friday	9.06-9.25	—	3.93-4.11	—

**Missouri Weekly Hay Summary 01/24/2020**

Winter weather captured the headlines for the entirety of this week. Ice and snow made feeding needs high and transportation very difficult. Movement of any hay was basically impossible. The supply of hay is moderate to heavy, demand is light to moderate, and prices are steady. The Missouri Department of Agriculture has a hay directory available for both buyers and sellers. To be listed, or to view the directory visit <http://mda.mo.gov/abd/haydirectory/> for listings of hay <http://agebb.missouri.edu/haylst/> (All prices f.o.b. and per ton unless specified and on most recent reported sales.

Supreme quality Alfalfa (RFV <185) 180.00-200.00  
 small squares 7.00-9.00 per bale

Premium quality Alfalfa (RFV 170-180) 160.00-180.00

Good quality Alfalfa (RFV 150-170) 120.00-160.00

small squares 5.00-7.00 per bale

Fair quality Alfalfa (RFV 130-150) 100.00-125.00

Good quality Mixed Grass hay 80.00-120.00

Small squares 6.00-8.00 per bale (some alfalfa/grass mix)

Fair to Good quality Mixed Grass hay 60.00-80.00

small squares 3.00-6.00 per bale

Fair quality Mixed Grass hay 35.00-50.00 per large round bale

25.00-40.00 per 4x5 round bale

Good quality Bromegrass 80.00-120.00

Fair to Good quality Bromegrass 50.00-80.00

Wheat hay 40.00-55.00 per large round bale

Wheat straw 3.00-6.00 per small square bale

(PRICES PER BU. EXCEPT GR. SORG. PER CWT)  
 \*NEW CROP \*\*PREVIOUS WEEK'S PRICES