

# Weekly Market Summary

Published by:  
**Missouri Department of Agriculture**  
**Ag Business Development Division**  
**Market News Program**



Chris Chinn, Director  
 Davin Althoff, Division Director  
 Tony Hancock, Editor  
<http://www.ams.usda.gov/marketnews.htm>

Michael L. Parson, Governor

Volume XXXX, Number 9 ♦ P.O. Box 630, Jefferson City, MO 65102 ♦ (573) 751-4211 ♦ Friday, February 28, 2020

## MISSOURI WEEKLY FEEDER CATTLE WEIGHTED AVERAGE REPORT

Receipts: 25,602 Week ago: 35,142 Year ago: 39,348  
 Steers and Heifers Medium and Large 1—Weighted average weights and prices

### STEERS: Medium and Large 1

257 lbs. 173.29	474 lbs. 180.45	679 lbs. 146.37	858 lbs. 130.26
321 lbs. 186.20	526 lbs. 173.75	725 lbs. 142.88	913 lbs. 124.19
382 lbs. 179.92	574 lbs. 162.49	766 lbs. 135.62	982 lbs. 119.00
421 lbs. 181.87	622 lbs. 156.38	823 lbs. 132.20	

### HEIFERS: Medium and Large 1

267 lbs. 168.99	483 lbs. 153.83	671 lbs. 129.96	859 lbs. 117.75
336 lbs. 160.22	527 lbs. 147.17	723 lbs. 128.58	
373 lbs. 156.41	571 lbs. 143.52	776 lbs. 121.01	
428 lbs. 154.95	621 lbs. 135.52	825 lbs. 110.15	

### Missouri Stocker Formula for 02/28/2020

Friday's **Missouri Stocker Formula** consists of **5205** head with a weighted average weight of **552.89** lbs. and a price value of **161.59**, 2.93 lower than last Friday.

This a rolling seven day calculated weighted value which combines all Feeder Steers reported by MDA/USDA Market News Service weighing from 400-649 lbs. in the Medium and Large 1 and Medium and Large 1-2 frame and muscle classifications, including all comment cattle except Brahman X.

### SOUTH CENTRAL MISSOURI WEEKLY SUMMARY

(West Plains, Ava)

Receipts: 4397 Week ago: 7159 Year Ago: 6258  
 Compared to last week, steer and heifer calves 6.00 to 12.00 lower, heifers over 550 lbs steady to 3.00 lower. Slaughter cows steady to 2.00 lower. Slaughter bulls steady to 2.00 lower.

#### STEERS:

Medium and Large 1

300-400 lbs.	180.00-192.50
400-500 lbs.	160.00-181.00
500-600 lbs.	148.00-174.00
600-700 lbs.	138.00-156.00
700-800 lbs.	132.00-143.00

#### HEIFERS:

Medium and Large 1

300-400 lbs.	149.00-173.00
400-500 lbs.	138.00-156.00
500-600 lbs.	129.00-148.00
600-700 lbs.	121.00-139.00

#### Holsteins:

Large 3

Scarce

#### SLAUGHTER COWS:

Scarce

Breaking and Boning (70-85% lean) 54.00-64.00, high dressing 61.00-73.00, low dressing 45.00-56.00. Lean (85-90%) 41.00-55.00

#### SLAUGHTER BULLS:

Yield Grade 1-2 1070-2125 lbs. 78.00-89.00; high dressing 90.00-107.00, low dressing 51.00-79.00

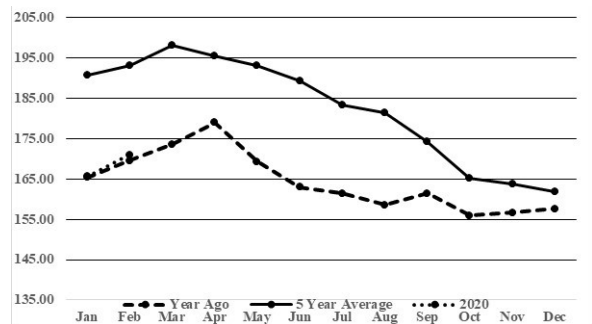
#### COW & CALF PAIRS:

Medium and Large 1-2 2-8 yrs 970-1275 lbs some rebred 1st stage with 150-300 lb calves 1200.00-1475.00 per pair

#### REPLACEMENT COWS:

Medium and Large 1 2-4 yrs 1250-1260 lbs 3rd stage 1050.00-1100.00. Medium and Large 1-2 2-8 yrs 1000-1465 lbs 2nd to 3rd stage 775.00-1250.00, 1st stage 925.00-950.00 per head

### Historical Feeder Steers Medium and Large 1 500-600 lbs. Weighted Average



\*Graph is updated the first Friday of each month.

### SOUTHWEST MISSOURI WEEKLY SUMMARY

(Joplin and Springfield)

Feeder Cattle Receipts: 9343 Week Ago: 9510 Year ago: 9095  
 Cow and Bull Receipts: 1154 Week ago: 2616 Year ago: 2291  
 Compared to last week, feeders under 600 lbs 2.00 to 6.00 lower, over 600 lbs 5.00 to 7.00 lower, 900 lb steers 7.00 to 10.00 lower. Slaughter cows steady to 1.00 lower. Slaughter bulls steady to 2.00 lower.

#### STEERS:

Medium and Large 1

300-400 lbs.	173.00-204.00
400-500 lbs.	164.00-200.00
500-600 lbs.	150.00-184.00
600-700 lbs.	136.00-162.00
700-800 lbs.	133.00-145.00
800-900 lbs.	127.00-139.00
900-1000 lbs.	119.00-128.00

#### HEIFERS:

Medium and Large 1

300-400 lbs.	144.00-172.50
400-500 lbs.	135.00-165.00
500-600 lbs.	132.00-158.00
600-700 lbs.	115.00-138.00
700-800 lbs.	110.00-130.50
850-900 lbs.	110.00-119.00

#### HOLSTEINS:

Large 3

Pkg 360 lbs.	60.00
400-450 lbs.	70.00-80.00
550-600 lbs.	75.00
650-700 lbs.	79.00-83.00
800-900 lbs.	85.00-87.25
Lot 953 lbs.	79.50

#### SLAUGHTER COWS:

Breaking and Boning (70-85% lean) 48.00-62.50, high dressing 58.00-72.50.

Lean (85-90%) 38.00-51.00  
**SLAUGHTER BULLS:** Yield Grade 1-2 1050-2350 lbs 75.00-88.50; high dressing 89.50-94.50, low dressing 50.00-76.00

#### REPLACEMENT COWS:

Medium and Large 1-2 2-8 yrs 933-1443 lbs 2nd to 3rd stage 900.00-1275.00, 1st stage 800.00-1025.00 per head

#### COW & CALF PAIRS:

Medium and Large 1-2 2-8 yrs 900-1500 lbs some rebred 1st to 2nd stage with baby to 450 lb calves 1250.00-1650.00 per pair

The Weekly Market Summary, as well as historical summaries, are available on our website <https://agmarketnews.mo.gov/summaries>

**WEST CENTRAL MISSOURI WEEKLY SUMMARY**

(Sedalia, Kingsville, Windsor, Butler)

Receipts: 4389 Week ago: 8233 Year ago: 8509

Compared to last week, feeders steady to 5.00 lower, instances of 10.00 lower. Slaughter cows uneven 2.00 lower to 2.00 higher.

FEEDER STEERS:  
Medium and Large 1400-500 lbs. 170.00-195.00  
500-600 lbs. 146.00-184.00  
600-700 lbs. 135.00-164.85  
700-800 lbs. 126.00-148.50  
800-900 lbs. 124.00-134.00FEEDER HEIFERS:  
Medium and Large 1400-500 lbs. 136.00-166.50  
500-600 lbs. 126.00-160.75  
600-700 lbs. 120.00-145.10  
700-800 lbs. 115.00-134.00  
Pkg 829 lbs. 114.00SLAUGHTER BULLS: Yield  
Grade 1-2 1170-2225 lbs 77.00-  
87.50; few high dressing 88.00-  
90.00; few low dressing 66.00-  
77.50SLAUGHTER COWS: Breaking  
and Boning (70-85% lean)  
49.00-66.00, high dressing 59.50-  
71.50. Lean (85-90%) 39.00-  
56.00REPLACEMENT COWS: Medium  
and Large 1-2 2-8 yrs 965-1290 lbs  
2nd to 3rd stage 700.00-1025.00, 1st  
stage 630.00-835.00 per headCOW & CALF PAIRS: Medi-  
um and Large 1-2 5 yrs to short  
solid 1000-1400 lbs with 150 to  
300 lb calves 1075.00-1400.00  
per pair**NORTHEAST MISSOURI WEEKLY SUMMARY**

(Bowling Green, Kingdom City, Palmyra)

Receipts: 5052 Week ago: 4866 Year ago: 4448

Compared to last week, steers steady to 5.00 lower. Heifers under 500 lbs steady, over 550 lbs 4.00 to 8.00 lower. Slaughter cows steady to firm.

FEEDER STEERS:  
Medium and Large 1400-500 lbs. 169.00-197.50  
500-600 lbs. 158.00-175.00  
600-700 lbs. 145.00-167.50  
700-800 lbs. 137.50-152.50FEEDER HEIFERS:  
Medium and Large 1400-500 lbs. 149.00-170.50  
500-600 lbs. 135.00-154.00  
600-700 lbs. 124.00-134.00  
700-800 lbs. 124.75-130.00  
Lot 856 lbs. 118.75BRED COWS: Medium and Large  
1-2 2-8 yrs 1089-1553 lbs 2nd  
to 3rd stage 1200.00-1625.00 per  
headSLAUGHTER COWS: Breaking  
and Boning, (70-85% lean) 55.00-  
63.50; high dressing 62.50-73.00.  
Lean (85-90%) 53.00-59.50SLAUGHTER STEERS: Choice 2  
-3 118.25-121.50SLAUGHTER BULLS: Yield  
Grade 1-2 1200-2450 lbs 81.50-  
91.00; high dressing 91.50-100.50;  
low dressing 65.00-82.00SLAUGHTER HEIFERS: Choice  
2-3 118.50. Choice 3-4 112.00-  
115.00**NORTH CENTRAL MISSOURI WEEKLY SUMMARY**

(Macon, Unionville, Green City, New Cambria)

Receipts: 3088 Week ago: 3364 Year ago: 3495

Compared to last week, steers and heifers 5.00 to 8.00 lower. Slaughter cows steady to 3.00 lower.

FEEDER STEERS:  
Medium and Large 1450-500 lbs. 167.50-192.50  
500-600 lbs. 160.00-185.00  
600-700 lbs. 145.00-171.00  
700-800 lbs. 137.00-151.50  
800-900 lbs. 125.00-135.25FEEDER HEIFERS:  
Medium and Large 1400-500 lbs. 140.00-155.25  
500-600 lbs. 138.50-150.00  
600-700 lbs. 125.00-145.00  
700-750 lbs. 127.00-128.00BRED COWS: Medium and  
Large 1-2 2-8 yrs 1090-1475 lbs  
2nd to 3rd stage 1200.00-1775.00,  
1st stage 925.00-1050.00 per headSLAUGHTER COWS: Breaking  
and Boning (75-85% lean) 53.50-  
60.00; high dressing 60.00-69.50.  
Lean (85-90%) 44.00-57.00COW & CALF PAIRS: Medium  
and Large 1-2 2-8 yrs 1000-1500  
lbs some rebred with 300-450 lb  
calves 1275.00-1750.00 per pairSLAUGHTER BULLS: Yield  
Grade 1-2 1625-2070 lbs 84.50-  
94.50**SOUTHEAST MISSOURI WEEKLY SUMMARY**

(Patton, Farmington)

Receipts: 1267 Week ago: 1322 Year ago: 2962

Compared to last week, steers and heifers uneven from 8.00 lower to 3.00 higher. Slaughter cows 2.00 higher. Slaughter bulls steady.

FEEDER STEERS:  
Medium and Large 1300-400 lbs. 155.00-170.00  
400-500 lbs. 150.00-187.00  
500-600 lbs. 136.00-168.00  
600-700 lbs. 127.00-151.00  
700-800 lbs. 121.00-138.25FEEDER HEIFERS:  
Medium and Large 1300-400 lbs. 135.00-165.00  
400-500 lbs. 130.00-163.00  
500-600 lbs. 122.00-142.50  
600-700 lbs. 116.00-127.00  
Pkg 755 lbs. 112.00REPLACEMENT COWS: Medium  
and Large 2 2-8 yrs 920-1640 lbs  
1st to 3rd stage 550.00-1300.00 per  
headSLAUGHTER COWS: Breaking  
and Boning (75-85% lean) 46.50  
-57.00. high dressing 57.50-  
64.50. Lean (85-90% lean) 33.00-  
45.00COW & CALF PAIRS: Medium  
and Large 2 2-8 yrs 1000-1320 lbs  
with 150-300 lb calves 985.00-  
1300.00 per pairSLAUGHTER BULLS: Yield  
Grade 1-2 1335-2085 lbs 60.00-  
72.50; high dressing 79.00-90.50**EAST CENTRAL MISSOURI WEEKLY SUMMARY**

(Cuba, Vienna)

Receipts: 814 Week ago: 2134 Year ago: 2531

Compared to last week, steers and heifers 6.00 to 12.00 lower on a limited market test. Slaughter cows steady to 2.00 lower.

FEEDER STEERS:  
Medium and Large 1400-500 lbs. 172.00-188.00  
500-600 lbs. 138.00-166.50  
600-650 lbs. 142.50-151.00  
750-800 lbs. 131.75-134.50  
800-900 lbs. 122.50-130.00FEEDER HEIFERS:  
Medium and Large 1400-500 lbs. 138.00-146.00  
550-600 lbs. 127.50-131.00  
600-700 lbs. 122.00-126.75  
700-750 lbs. 113.00-119.75REPLACEMENT COWS: Medium  
and Large 1 5 yrs to short solid  
1240-1450 lbs 3rd stage 1090.00-  
1275.00 per headSLAUGHTER COWS: Break-  
ing and Boning (70-85% lean)  
52.50-64.50. Lean (85-90%)  
47.00-53.50COW & CALF PAIRS: Medium  
and Large 1-2 5 yrs to broken mouth  
1000-1475 lbs with 150-450 lb  
calves 1000.00-1475.00 per pairSLAUGHTER BULLS: Yield  
Grade 1-2 1440-2160 lbs 80.00-  
88.50; low dressing few 80.00-  
82.00**NORTHWEST MISSOURI WEEKLY SUMMARY**

(St Joseph)

Receipts: 1351 Week Ago: 1084 Year ago: 3052

Compared to last week, steers 2.00 to 6.00 lower. Heifers 4.00 to 10.00 lower, greatest decline under 550 lbs. Slaughter cows steady to 1.00 higher. Slaughter bulls steady, spots 1.00 to 2.00 higher on high dressing bulls.

FEEDER STEERS:  
Medium and Large 1450-500 lbs. 176.00-182.00  
500-600 lbs. 155.00-180.00  
600-700 lbs. 140.00-162.00  
700-800 lbs. 138.25-147.75  
800-850 lbs. 126.75-129.50FEEDER HEIFERS:  
Medium and Large 1400-500 lbs. 138.00-153.50  
500-600 lbs. 133.00-160.50  
600-700 lbs. 126.00-138.75  
Part load 731 lbs. 128.75SLAUGHTER BULLS:  
Yield Grade 1-2 1200-2115 lbs  
80.00-86.00; high dressing  
88.00-94.00; low dressing 60.00  
-65.00SLAUGHTER COWS: Breaking  
and Boning (75-85% lean) 51.00-  
65.50. Lean (85-90%) 40.00-53.00BRED COWS: Medium and  
Large 1 2-8 yrs 1032-1295 lbs  
3rd stage 1400.00-1600.00 per  
headCOW CALF PAIRS: Medium and  
Large 1-2 5-8 yrs 1250-1400 lbs  
with 150-300 lb calves 1275.00-  
1500.00 per pair

**MISSOURI WEEKLY DIRECT  
SLAUGHTER CATTLE REPORT**

Weekly Receipts: 80 Week ago: 80 Year ago: 320  
Trading this week remains inactive as producers are passing lower bids.

**LIVE STEERS & HEIFERS:** DRESSED STEERS & HEIFERS:  
No sales reported No sales reported

**GRADE AND WEIGHT (Grid):** 2 loads late last Fri 192.00

**NATIONAL DIRECT DELIVERED FEEDER PIG REPORT  
02/21/2020**

Supply includes 69% formulated prices.  
Early weaned pigs 10-12 lbs basis: Formula 40.50-49.00, weighted average 44.97. Cash 11.00-45.00, weighted average 29.94  
Feeder Pigs 40 lbs basis: Cash 52.00-61.00, weighted average 57.25

**WEEKLY LIVESTOCK SLAUGHTER 02/29/2020**

	Cattle	Hogs	Sheep
Week to Date:	627,000	2,556,000	35,000
Last Week:	628,000	2,622,000	34,000
Last Year:	609,000	2,437,000	37,000

**WHOLESALE FEEDSTUFFS PRICES  
(DOLLARS PER TON-BULK BASIS)**

Area	Soybean Hulls - Bulk	Soybean Meal 48% Solvent	Cottonseed Meal 41% Solvent	Meat Meal	Wheat Middlings
Kansas City	85.00	284.50	297.50	230.00	120.00
St. Louis	N/A	309.50	300.00	N/A	97.50

**Springfield Livestock Marketing Center  
Special Dairy Heifer Sale Report for 02/25/2020**  
Receipts: 214 Last Month: 377 Last Year: 736

Springer Heifers bred seven to nine months: Supreme 1000.00-1300.00, Jerseys 1025.00-1385.00, crossbreds 980.00-1150.00. Approved 800.00-990.00, Jerseys 800.00- 975.00, crossbreds 775.00-925.00. Medium 600.00-725.00, Jerseys 700.00-750.00, crossbreds 600.00-650.00. Common few 225.00-375.00, ind crossbred 400.00. Heifers bred three to six months: Supreme few 1035.00-1070.00. Approved 750.00- 985.00, few Jerseys 750.00, ind crossbred 700.00. Medium ind crossbred 550.00. Heifers bred one to three months: Scarce. Open Heifers: Approved: 220-264 lbs 170.00-250.00, ind crossbred 300 lbs 270.00; 340-350 lbs few 200.00-300.00; 400-500 lbs Scarce; 538-590 lbs 380.00-420.00; 686 lbs pkg of 6 570.00; 775-875 lbs few 560.00-580.00/ Medium: 530-565 lbs few 210.00-330.00. Replacement Cows: Fresh and milking cows: Approved 775.00-950.00. Medium 510.00- 685.00, ind Jersey 650.00, few crossbreds 625.00. Common 190.00-475.00, ind Jersey 225.00, crossbreds 150.00-470.00. Bred and Springer Cows: Scarce. Baby Calves: Holstein bulls ind 85.00. Holstein heifers few 75.00-100.00. ind crossbred heifer 140.00

**Buffalo Livestock Market Sheep and Goat Auction 02/25/2020**

Receipts: 423 (All prices CWT unless otherwise noted.) SHEEP: Feeder lambs hair Medium and Large 1 40-50 lbs 260.00-262.50. Medium and Large 1-2 pkg 28 lbs 230.00; 30-40 lbs 225.00-230.00. Medium and Large 2 20 lbs 220.00-230.00. Slaughter lambs Wooled Choice and Prime 1-3 pkg 69 lbs 255.00. Choice 1-3 pkg 73 lbs 230.00; 80-90 lbs 210.00-215.00. Good and Choice 1-3 pkg 56 lbs 140.00; pkg 85 lbs 175.00; pkg 111 lbs 147.00. Hair Choice and Prime 1-3 50-60 lbs 260.00-269.00; pkg 62 lbs 255.00; pkg 71 lbs 260.00. Slaughter ewes Good and Choice 1-3 110-170 lbs 80.00-95.00. Hair Good and Choice 1-3 pkg 93 lbs 70.00; 100-160 lbs 70.00-85.00. Slaughter bucks 88.00-95.00. Replacement ewes Medium and Large 1-2 2-4 yrs 125-150 lbs 87.50. Families Medium and Large 1 2-4 yrs with baby lambs 150.00-170.00 per head. Medium and Large 1-2 2-4 yrs 130-140 lbs with baby lambs 130.00-142.50 per family. Medium and Large 2 2-4 yrs 118 lbs with baby lambs 110.00 per family. GOATS: Feeder kids Selection 1 pkg 46 lbs 310.00. Selection 2 30-40 lbs 255.00-260.00. Selection 3 pkg 39 lbs 215.00; pkg 44 lbs 200.00. Slaughter kids Selection 1 55-70 lbs 280.00-295.00. Selection 2 pkg 51 lbs 265.00; 70-80 lbs 245.00-256.00. Slaughter does Selection 1 pkg 95 lbs 185.00. Selection 2 pkg 104 lbs 150.00. Selection 3 130-140 lbs 120.00-137.50; pkg 170 lbs 124.00. Replacement does 1-2 yrs 77 lbs 205.00.

**WEEKLY COMMODITY GRAIN FUTURES TRENDS**

Compared to last Friday: Soybeans 0.06 to 0.09 lower, Wheat 0.22 to 0.27 lower, Corn 0.09 to 0.12 lower, KC Wheat 0.19 to 0.22 lower, Soybean Meal 9.10 to 10.80 higher.

**Daily Grain Futures Closes**

	Mon.	Tues.	Wed.	Thu.	Fri.
Soybeans					
Mar	874 1/4	879	881	886 1/4	883 1/2
May	882 1/2	888 1/4	892	895	892 3/4
Jul	894	899 3/4	902 3/4	904 3/4	901 1/2
Aug	898	903 3/4	907	908 1/4	904
Sep	899 3/4	905	907 3/4	908 1/2	904 1/4
Wheat					
Mar	536 1/4	539	540 1/4	529 1/4	529
May	534 3/4	537	535 3/4	527 1/2	525
Jul	536 3/4	537 1/4	535 1/2	529	526 1/4
Sep	543 1/2	543 1/4	541 3/4	536	533
Dec	554 1/4	553	551 3/4	546 1/4	543 1/2
Corn					
Mar	372 1/4	372 1/2	370 1/2	364 1/2	366 1/2
May	376 1/4	376 1/2	374 1/2	368	368 1/4
Jul	379 1/2	380	378 3/4	372 1/2	372 1/2
Sep	377 3/4	378	377 3/4	372 3/4	372 1/2
Dec	382 1/4	382 1/4	381 1/2	377 1/2	377
KC Wheat					
Mar	452 1/4	455	452 1/4	433 1/4	445 1/2
May	459 1/4	462	459 1/4	451 3/4	453 1/4
Jul	466 1/2	468 3/4	466 1/4	458 3/4	460 1/4
Sep	475	477 1/4	475 1/4	468	469 1/4
Dec	487	490	488	481	482 3/4
SB Meal					
Mar	286.10	286.50	291.30	296.90	298.60
May	292.00	293.00	298.30	303.60	305.60
Jul	297.90	299.30	303.80	307.90	310.10
Aug	299.70	301.30	305.80	309.20	311.10
Sep	300.90	302.50	307.10	310.00	311.40

**WEEKLY COMMODITY FUTURES TRENDS**

Compared to last week: Live Cattle 7.48 to 9.40 lower, Lean Hogs 4.42 to 5.00 lower, Feeder Cattle 5.75 to 10.68 lower.

**Daily Futures Closes**

	Mon.	Tues.	Wed.	Thu.	Fri.
Cattle					
Feb	117.00	115.02	114.07	112.62	112.70
Apr	115.25	112.95	112.35	110.47	107.57
Jun	107.37	105.80	105.02	103.92	101.20
Aug	106.72	105.40	104.97	104.47	102.27
Oct	110.70	109.80	110.05	109.65	107.52
Lean Hogs					
Apr	64.62	64.67	65.15	62.55	62.27
May	71.87	71.97	72.17	69.75	69.02
Jun	79.95	79.70	80.40	78.05	77.22
Jul	81.27	80.80	81.60	79.40	78.30
Aug	80.87	80.50	81.27	79.35	78.15
Fdr Cat					
Mar	136.02	132.97	134.07	132.57	131.27
Apr	137.60	134.12	135.97	134.07	132.70
May	138.35	135.80	136.87	135.55	133.52
Aug	145.17	143.47	143.62	143.37	141.55
Sep	146.50	145.20	145.30	145.25	143.52
Milk					
Feb	17.01	17.03	17.01	16.99	16.98
Mar	16.65	16.53	16.47	16.31	16.29
Apr	16.47	16.39	16.18	15.98	16.17

**WESTERN CORNBELT DAILY DIRECT PRIOR DAY HOG REPORTS FOR 02/28/2020**

**BARROWS AND GILTS:**

Base Price weighted average 50.07, 5 day rolling average 49.53

**SOWS:** 3,352 head

300-500 lbs. 13.00-37.00  
Over 500 lbs. 19.00-34.87

WEEKLY MARKET SUMMARY  
 (USPS 597250)  
 To be published weekly by the  
 Missouri Department of Agriculture  
 1616 Missouri Blvd.  
 Jefferson City, MO 65109

Postmaster: Send address changes to:  
 Missouri Department of Agriculture  
 P.O. Box 630  
 Jefferson City, MO 65102

Periodicals postage paid at  
 Jefferson City, Missouri

**Market News Hotline**  
**1-573-522-9244**

**February 28, 2020**

**MISSOURI GRAIN WEEKLY TRENDS**

Compared to last Friday, Soybeans 0.02 to 0.19 lower, Wheat 0.22 to 0.52 lower, Corn 0.08 to 0.16 lower, Sorghum 0.16 to 0.35 lower.

Area	#1 Soy-beans	#2 Soft Wheat	#2 Corn	#2 Grain Sorghum
<u>Kansas City</u>				
Friday**	8.85-9.00	5.36-5.51	3.90-3.92	6.73
Monday	8.68-8.84	5.21-5.36	3.85-3.87	6.64
Tuesday	8.73-8.89	5.24-5.39	3.85-3.90	6.64
Wednesday	8.75-8.91	5.25-5.40	3.85-3.86	6.60
Thursday	8.80-8.96	5.14-5.29	3.87-3.88	6.50
Friday	8.84-8.94	5.14-5.25	3.80-3.82	6.57
<u>St. Louis</u>				
Friday**	9.20-9.21	6.11	4.00-4.02	7.26
Monday	9.03-9.05	5.91	3.94-3.95	7.17
Tuesday	9.08	5.94	3.95	7.17
Wednesday	9.11	5.95	3.92-3.93	7.14
Thursday	9.16	5.64	3.87-3.88	6.85
Friday	9.02-9.15	5.59	3.85-3.94	6.91
<u>Central</u>				
Friday**	8.60-8.65	5.31	3.77	—
Monday	8.44-8.49	5.16	3.72	—
Tuesday	8.49-8.54	5.19	3.72	—
Wednesday	8.51-8.56	5.20	3.70-3.71	—
Thursday	8.56-8.61	5.09	3.64-3.65	—
Friday	8.83-8.59	4.99-5.09	3.66	—
<u>S.E. MO</u>				
Friday**	9.02-9.18	—	3.82-4.01	—
Monday	8.85-9.02	—	3.78-3.96	—
Tuesday	8.90-9.07	—	3.78-3.96	—
Wednesday	8.92-9.09	—	3.76-3.94	—
Thursday	8.97-9.14	—	3.70-3.88	—
Friday	8.94-9.11	—	3.72-3.90	—

(PRICES PER BU. EXCEPT GR. SORG. PER CWT)  
 \*NEW CROP \*\*PREVIOUS WEEK'S PRICES

**Missouri Weekly Hay Summary 02/27/2020**

Another dose of winter weather and some heavy rain brought the return of mud and frustrations as farmers try to care for livestock. Still several feeding days left, if not months, but as March arrives thoughts of spring are in the air. Hay movement is slow. The supply of hay is moderate, demand is light to moderate, and prices are steady. The Missouri Department of Agriculture has a hay directory available for both buyers and sellers. To be listed, or to view the directory visit <http://mda.mo.gov/abd/haydirectory/> for listings of hay <http://agebb.missouri.edu/haylst/> (All prices f.o.b. and per ton unless specified and on most recent reported sales.

Supreme quality Alfalfa (RFV <185) 180.00-200.00  
 small squares 7.00-9.00 per bale

Premium quality Alfalfa (RFV 170-180) 160.00-180.00  
 Good quality Alfalfa (RFV 150-170) 120.00-160.00  
 small squares 5.00-7.00 per bale  
 Fair quality Alfalfa (RFV 130-150) 100.00-125.00

Good quality Mixed Grass hay 80.00-120.00  
 Small squares 6.00-8.00 per bale (some alfalfa/grass mix)  
 Fair to Good quality Mixed Grass hay 60.00-80.00  
 small squares 3.00-6.00 per bale  
 Fair quality Mixed Grass hay 35.00-50.00 per large round bale  
 25.00-40.00 per 4x5 round bale

Good quality Bromegrass 80.00-120.00  
 Fair to Good quality Bromegrass 50.00-80.00

Wheat hay 40.00-55.00 per large round bale  
 Wheat straw 3.00-6.00 per small square bale