

# Weekly Market Summary

Published by:  
**Missouri Department of Agriculture**  
**Ag Business Development Division**  
**Market News Program**



Chris Chinn, Director  
 Davin Althoff, Division Director  
 Tony Hancock, Editor  
<http://www.ams.usda.gov/marketnews.htm>

Michael L. Parson, Governor

Volume XLII, Number 5 ♦ P.O. Box 630, Jefferson City, MO 65102 ♦ (573) 751-4211 ♦ Monday, February 7, 2022

## MISSOURI WEEKLY FEEDER CATTLE WEIGHTED AVERAGE REPORT

Receipts: 23,833 Week ago: 35,653 Year ago: 30,228  
 Steers and Heifers Medium and Large 1—Weighted average weights and prices

### STEERS: Medium and Large 1

332 lbs. 204.40	525 lbs. 195.76	721 lbs. 162.65	923 lbs. 147.01
378 lbs. 208.43	571 lbs. 187.16	773 lbs. 157.38	973 lbs. 142.70
423 lbs. 199.75	623 lbs. 176.01	819 lbs. 155.21	
476 lbs. 200.66	670 lbs. 175.45	862 lbs. 153.81	

### HEIFERS: Medium and Large 1

333 lbs. 174.65	526 lbs. 163.53	729 lbs. 147.76
371 lbs. 175.11	578 lbs. 159.44	767 lbs. 148.91
424 lbs. 167.51	628 lbs. 153.67	802 lbs. 138.43
478 lbs. 162.22	678 lbs. 153.06	864 lbs. 141.00

### Missouri Steer (Heifer) Stocker Formula for 2/07/2022

Monday's Missouri Stocker Formula consists of **4211 (4903)** head with a weighted average weight of **553.25 (545.08)** lbs. and a price value of **181.77 (155.20)**, 2.18 higher (0.59 higher) than last Monday.

This a rolling seven day calculated weighted value which combines all Feeder Steers reported by MDA/USDA Market News Service weighing from 400-649 lbs. in the Medium and Large 1 and Medium and Large 1-2 frame and muscle classifications, including all comment cattle except Brahman X. Heifer values are in parentheses.

### SOUTH CENTRAL MISSOURI WEEKLY SUMMARY

(West Plains, Ava)

Receipts: 3173 Week ago: 5696 Year Ago: 6793  
 Compared to last week, steer calves 2.00 to 5.00 higher and heifer calves uneven from 3.00 lower to 3.00 higher. Yearlings not well tested. No test on cows and bulls this week.

#### STEERS:

Medium and Large 1

400-500 lbs.	185.00-201.00
500-600 lbs.	174.00-195.00
600-700 lbs.	156.00-170.00
21 hd 734 lbs.	157.50

#### HEIFERS:

Medium and Large 1

300-350 lbs.	166.00-172.00
400-500 lbs.	152.00-162.00
500-600 lbs.	142.00-156.00
600-700 lbs.	140.00-145.00
700-750 lbs.	138.00

#### Holsteins

Large 3

Scarce

#### SLAUGHTER COWS:

Scarce

Scarce

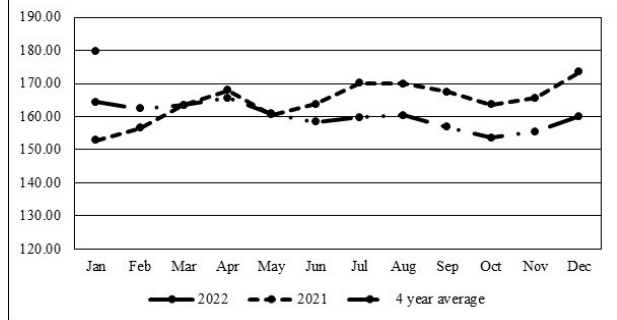
#### SLAUGHTER BULLS:

Scarce

BRED COWS: Scarce

COW & CALF PAIRS: Scarce

### Missouri Stocker Formula - Steers



\*Graph is updated the first Monday of each month.

### SOUTHWEST MISSOURI WEEKLY SUMMARY

(Joplin and Springfield)

Receipts: 9558 Week Ago: 12,563 Year ago: 6269  
 Compared to last week, steers and heifers steady. Slaughter cows 3.00 to 6.00 higher. Slaughter bulls steady to 3.00 higher.

#### STEERS:

Medium and Large 1

300-400 lbs.	205.00-215.00
400-500 lbs.	195.00-214.00
500-600 lbs.	182.00-200.00
600-700 lbs.	165.00-182.00
700-800 lbs.	156.00-163.00
800-900 lbs.	150.00-158.50
900-950 lbs.	140.00-147.50

#### HEIFERS:

Medium and Large 1

300-400 lbs.	172.00-184.00
400-500 lbs.	161.00-171.00
500-600 lbs.	157.00-169.50
600-700 lbs.	148.00-155.00
700-800 lbs.	146.85-156.00
800-900 lbs.	138.00-144.00

#### HOLSTEINS:

Large 3

Scarce

#### SLAUGHTER COWS:

Breaking and Boning (70-85% lean) 66.00-78.50, , high dressing 77.00-86.00; low dressing 54.00-68.00. Lean (85-90%) 55.00-67.00  
SLAUGHTER BULLS: Yield Grade 1-2 1270-2495 lbs 91.50-103.00; high dressing 104.00-114.00; low dressing 80.00-91.00

BRED COWS: Medium and Large 1-2 2-8 yrs 970-1465 lbs 2nd to 3rd stage 860.00-1225.00; over 8 yrs 1020-1050 lbs 2nd to 3rd stage 700.00-775.00 per head

COW & CALF PAIRS: Medium and Large 1-2 2-8 yrs 1260-1377 lbs with 150-300 lb calves 1000.00 -1350.00 per pair

The Weekly Market Summary, as well as historical summaries, are available on our website <https://agmarketnews.mo.gov/summaries>  
 Market News Hotline: 1-573-522-9244

**WEST CENTRAL MISSOURI WEEKLY SUMMARY**

(Kingsville, Windsor, Butler)

Receipts: 3565 Week ago: 7579 Year ago: 5874

Compared to last week, steers under 750 lbs 5.00 to 9.00 higher, over 750 lbs mostly 3.00 higher. Heifers steady to 3.00 higher. Slaughter cows firm to 5.00 higher.

FEEDER STEERS:

Medium and Large 1

350-400 lbs.	208.00-214.00
400-500 lbs.	202.00-216.75
500-600 lbs.	183.00-211.50
600-700 lbs.	166.00-183.60
700-800 lbs.	157.00-173.00
850-900 lbs.	156.85-157.35
900-1000 lbs.	145.25-149.85

FEEDER HEIFERS:

Medium and Large 1

Pkg 366 lbs.	184.50
400-500 lbs.	161.00-182.50
500-600 lbs.	151.00-173.00
600-700 lbs.	149.50-158.75
700-800 lbs.	146.00-155.00

SLAUGHTER BULLS: Yield Grade 1-2 1515-2220 lbs 90.00-103.50; high dressing 105.00-115.00; low dressing 85.00-87.00

SLAUGHTER COWS: Breaking and Boning (70-85% lean) 69.00-78.00, high dressing 77.50-80.00. Lean (85-90%) 54.00-62.00

REPLACEMENT COWS: ScarceCOW & CALF PAIRS: scarce**NORTHEAST MISSOURI WEEKLY SUMMARY**

(Bowling Green, Kingdom City, Palmyra)

Receipts: 3133 Week ago: 6432 Year ago: 2245

Compared to last week, steers steady to 5.00 higher, spots 10.00 higher. Heifers uneven 5.00 lower to 5.00 higher. Slaughter cows firm to 5.00 higher.

FEEDER STEERS:

Medium and Large 1

400-500 lbs.	195.00-207.00
500-600 lbs.	183.50-202.00
600-700 lbs.	165.00-180.00
700-800 lbs.	152.00-172.50
850-900 lbs.	151.00-153.00

FEEDER HEIFERS:

Medium and Large 1

350-400 lbs.	170.00-180.00
400-500 lbs.	160.00-178.00
500-600 lbs.	149.00-166.00
600-700 lbs.	144.00-157.00
66 hd 741 lbs.	146.00

SLAUGHTER BULLS: Yield Grade 1-2 1275-2515 lbs 88.50-100.00; high dressing 101.00-115.00; low dressing few 83.00-87.00

SLAUGHTER COWS: Breaking and Boning, (70-85% lean) 64.00-74.00; high dressing 73.00-86.00; low dressing 55.00-67.50. Lean (85-90%) 54.00-64.00

SLAUGHTER STEERS: Choice 2-3 133.00-138.00. Select and Choice 1-3 124.00-127.50. Select 1-2 112.00-121.50

BRED COWS: Medium and Large 1-2 5-8 yrs 1352-1377 lbs 2nd to 3rd stage 1200.00-1550.00 per head

SLAUGHTER HEIFERS: Choice 2-3 few 133.00-137.50. Select and Choice 1-3 126.00-131.00. Select 1-2 few 120.00-123.50

**NORTH CENTRAL MISSOURI WEEKLY SUMMARY**

(Macon, Unionville, Green City, New Cambria)

Receipts: 4837 Week ago: 4728 Year ago: 7185

Compared to last week, feeders traded firm to 5.00 higher. Slaughter cows 4.00 to 7.00 higher.

FEEDER STEERS:

Medium and Large 1

400-500 lbs.	196.00-212.00
500-600 lbs.	171.00-210.00
600-700 lbs.	168.50-191.00
700-800 lbs.	152.50-183.00
800-900 lbs.	154.00-164.50

FEEDER HEIFERS:

Medium and Large 1

400-500 lbs.	153.00-179.00
500-600 lbs.	153.00-179.00
600-700 lbs.	148.00-165.00
700-800 lbs.	144.25-153.75

SLAUGHTER BULLS: Yield Grade 1-2 1370-2125 lbs 86.00-100.00; high dressing couple 99.00-103.50

SLAUGHTER COWS: Breaking and Boning, (70-85% lean) 60.50-77.00; high dressing 71.00-80.00; low dressing 53.50-64.00. Lean (85-90%) 52.00-65.00

BRED COWS: Medium and Large 1

COW & CALF PAIRS: Medium and Large 1

**SOUTHEAST MISSOURI WEEKLY SUMMARY**

(Jackson and Farmington)

Receipts: 433 Week ago: 1213 Year ago: 1673

Compared to last week, steers and heifers steady to 8.00 higher on a light test. Slaughter cows 7.00 higher. Slaughter bulls 2.00 higher.

FEEDER STEERS:

Medium and Large 1

300-400 lbs.	180.00-200.00
400-500 lbs.	167.00-190.00
500-600 lbs.	162.00-167.00
600-700 lbs.	147.00-162.00
Pkg 745 lbs.	155.00

FEEDER HEIFERS:

Medium and Large 1

300-400 lbs.	152.00-162.00
400-500 lbs.	145.00-165.00
500-600 lbs.	135.00-157.00
600-700 lbs.	138.00-152.00
700-750 lbs.	130.00-135.00

SLAUGHTER BULLS: Yield Grade 1-2 1115-1725 lbs 77.00-90.00

SLAUGHTER COWS: Breaking and Boning (75-85% lean) 59.00-71.00; high dressing 69.00-79.00. Lean (85-90% lean) 35.00-54.00

REPLACEMENT COWS: Medium and Large 2 few 2-8 yrs 1045-1290 lbs 1st to 3rd stage 825.00-875.00 per head

COW & CALF PAIRS: Scarce**EAST CENTRAL MISSOURI WEEKLY SUMMARY**

(Cuba, Vienna)

Receipts: 982 Week ago: 2519 Year ago: 1969

Compared to last week, steers under 500 lbs steady, over 500 lbs firm to 3.00 higher. Heifers under 500 lbs steady to 4.00 lower, over 500 lbs steady to firm. Slaughter cows 6.00 to 8.00 higher.

FEEDER STEERS:

Medium and Large 1

400-500 lbs.	184.00-207.50
500-600 lbs.	170.00-189.50
600-700 lbs.	160.00-168.00
700-800 lbs.	150.50-160.00
Pkg 835 lbs.	145.00

FEEDER HEIFERS:

Medium and Large 1

350-400 lbs.	163.00
400-500 lbs.	154.00-169.00
500-600 lbs.	146.00-162.00
Pkg 695 lbs.	145.00
Pkg 729 lbs.	137.00

SLAUGHTER BULLS: Yield Grade 1-2 1360-1910 lbs 100.00-106.50

SLAUGHTER COWS: Breaking and Boning (70-85% lean) 70.50-78.50; high dressing 79.00-81.00. Lean (85-90%) 65.00-70.00

BRED COWS: ScarceCOW & CALF PAIRS: Scarce**MISSOURI WEEKLY DIRECT  
SLAUGHTER CATTLE REPORT 02/04/22**

Weekly Receipts: 320 Week ago: 480 Year ago: 320

Trading as of Friday morning was light to moderate with flat dressed sales mostly 2.00 higher and grid dressed sales inactive this week.

LIVE STEERS & HEIFERS:

Scarce

DRESSED STEERS & HEIFERS:

8 loads Tue and Wed 220.00

GRADE AND WEIGHT (Grid): Scarce**NATIONAL DIRECT DELIVERED FEEDER PIG REPORT**

02/04/22 Receipts: 80,817 Week ago: 101,194 Year Ago: 86,187 Receipts include 68% formulated prices. Early weaned pigs 10-12 lbs. basis: Formula 39.80-81.79, weighted average 62.95. Cash 52.00-93.00, weighted average 76.63. Feeder pigs 40 pounds basis: Cash 90.00-110.00, weighted average 104.31

**NATIONAL DAILY DIRECT PRIOR DAY HOG REPORTS  
FOR 02/07/22**

BARROWS AND GILTS (Carcass Basis): 5428 head  
Base Carcass Price, 69.00-90.00, weighted average 76.43

SOWS (Live Basis): 6184 head  
300-500 lbs. 37.00-71.00  
Over 500 lbs. 40.32-71.00

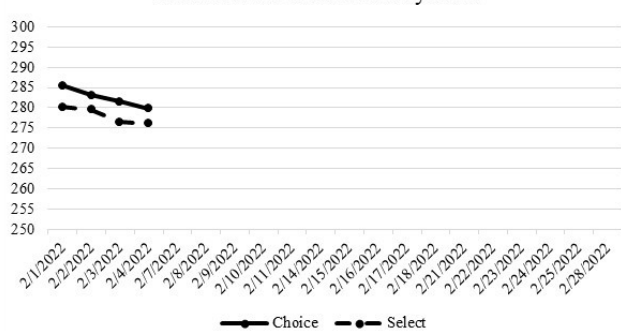
**WHOLESALE FEEDSTUFFS PRICES 02/01/22**  
(DOLLARS PER TON-BULK BASIS)

Area	Soybean Hulls - Bulk	Soybean Meal 48% Solvent	Cottonseed Meal 41% Solvent	Meat Meal	Wheat Middlings
Kansas City	150.00	442.00	372.50	360.00	205.00
St. Louis	N/A	422.50	367.50	N/A	187.50

**NATIONAL BOXED BEEF CUTOUT/BOXED BEEF CUTS**

Date	Choice	Select	Total Loads
01/31	290.40	283.27	88
02/01	285.44	280.22	127
02/02	283.15	279.57	130
02/03	281.46	276.47	134
02/04	279.81	276.05	87
<b>5 Day Simple Average</b>	284.05	279.12	

Boxed Beef Cuts February 2022



**Missouri Weekly Sheep/Goat Auction Summary 1/28/22**

Receipts: 676 Week Ago: 889 Last Year: 756

(All prices CWT unless noted.)

**SHEEP:** Slaughter lambs woolled and shorn Choice and Prime 1-3 pkg 50 lbs fancy 435.00. Hair Choice and Prime 1-3 pkg 38 lbs 495.00; 40-50 lbs 410.00-455.00; 50-60 lbs 435.00-452.50; 60-70 lbs 380.00-445.00; 70-80 lbs 370.00-435.00; pkg 87 lbs 375.00. Choice 1-3 50-95 lbs 320.00-375.00. Good 2-3 80-140 lbs 190.00-265.00; few 150-160 lbs 190.00-205.00. Slaughter ewes hair Utility and Good 1-3 pkg 110 lbs 170.00. Slaughter bucks 1-2 150-190 lbs 175.00-240.00. Hair 100-215 lbs 190.00-260.00. Replacement ewes hair Small and Medium 1-2 2-4 yrs exposed 90-125 lbs 320.00-350.00 cwt.

**GOATS:** Feeder kids Selection 1 20-30 lbs 440.00-450.00; 30-40 lbs 430.00-490.00; 40-50 lbs 415.00-460.00. Slaughter kids Selection 1 50-60 lbs 400.00-445.00, fancy 450.00-470.00; 60-70 lbs 430.00-455.00; pkg 71 lbs 440.00; pkg 95 lbs fancy 440.00. Selection 2 50-60 lbs 375.00-390.00; 60-70 lbs 365.00-380.00; 70-80 lbs 370.00-390.00; 80-90 lbs 345.00-360.00; pkg 97 lbs 330.00. Slaughter nannies/does Selection 1-2 pkg 60 lbs 225.00; few 90-100 lbs 295.00-315.00; 100-135 lbs 235.00-290.00. Slaughter bucks/billies Selection 1-2 90-100 lbs 270.00-285.00; 100-145 lbs 210.00-280.00; 150-160 lbs 240.00-280.00. Wether kids Selection 1 pkg 51 lbs 460.00.

Explanatory Notes: Stage - Represents estimated lambing/kidding period (Open, Exposed, Bred, Fall = Sep-Nov, Win = Dec-Feb, Spr = Mar-May, Sum=Jun-Aug

**WEEKLY COMMODITY GRAIN FUTURES TRENDS**

Compared to last Friday, Soybeans 0.55 to 0.83 higher, Wheat 0.19 to 0.23 lower, Corn Mar, May, and Jul 0.08 to 0.16 lower, others 0.02 to 0.04 higher, KC Wheat 0.13 to 0.17 lower, Soybean Meal 21.90 to 32.70 higher.

Daily Grain Futures Closes

	Mon.	Tues.	Wed.	Thu.	Fri.
<b>Soybeans</b>					
Mar	1490 1/2	1528 1/2	1545 1/4	1544 1/4	1553 1/2
May	1495 1/4	1534 1/4	1549 1/2	1547	1557 1/2
Jul	1492 1/2	1528	1542 3/4	1542	1553 1/2
Aug	1460 1/2	1490	1504 1/2	1505 1/4	1515 1/4
Sep	1400 1/2	1422 1/2	1431 3/4	1433 1/4	1439 1/2
<b>Wheat</b>					
Mar	761 1/4	769	755	751 3/4	762 1/4
May	766 1/4	774	761	758 1/4	770
Jul	706 1/2	767 1/2	755	752 1/4	761 3/4
Sep	761 1/4	767 1/4	756 1/4	753 1/2	763
Dec	765 1/4	771 1/4	761	758 1/4	767 1/2
<b>Corn</b>					
Mar	626	634 3/4	622 1/2	616 3/4	620 1/2
May	624 1/2	633 3/4	622 1/4	617 1/4	621 3/4
Jul	619 1/4	628	617 1/4	613	618 1/2
Sep	585 1/2	590 3/4	583 3/4	579 3/4	586
Dec	573 1/2	577 3/4	573	568 1/4	573 3/4
<b>KC Wheat</b>					
Mar	781 1/4	786 1/4	769 1/2	769	785 3/4
May	784 1/4	789 1/4	773 1/4	772 3/4	789 1/2
Jul	784	788 1/2	774 1/2	774 3/4	790 3/4
Sep	787 3/4	792 1/4	778 3/4	779	794 1/2
Dec	795 1/4	800 1/4	787	787 1/2	802 1/4
<b>SB Meal</b>					
Mar	418.90	436.00	435.10	437.10	443.90
May	417.00	433.50	433.50	435.10	441.80
Jul	415.70	430.00	430.20	432.20	438.80
Aug	408.10	420.10	419.40	421.70	427.80
Sep	397.20	405.50	404.70	407.30	412.50

**WEEKLY COMMODITY FUTURES TRENDS**

Compared to last Friday, Live Cattle 3.10 to 3.77 higher, Lean hogs Feb 0.90 lower, others 3.60 to 5.15 higher, Feeder Cattle 4.65 to 6.48 higher.

Daily Futures Closes

	Mon.	Tues.	Wed.	Thu.	Fri.
<b>Cattle</b>					
Feb	139.57	140.30	141.12	141.60	142.05
Apr	144.52	145.37	146.90	146.75	146.87
Jun	139.07	139.97	141.62	141.52	141.37
Aug	138.00	138.75	140.17	139.87	140.05
Oct	142.80	143.42	144.60	144.42	144.70
<b>Lean Hogs</b>					
Feb	88.47	88.15	87.35	86.45	87.02
Apr	95.70	97.67	99.12	98.37	100.07
May	99.67	101.92	103.05	102.20	103.67
Jun	105.52	107.42	108.92	108.20	109.42
Jul	105.75	107.32	108.80	108.12	109.15
<b>Fdr Cat</b>					
Mar	163.02	163.70	166.87	166.72	166.10
Apr	168.45	169.15	171.82	171.80	171.42
May	172.90	173.52	175.75	175.62	175.35
Aug	182.70	183.62	185.17	185.12	184.92
Sep	184.67	185.30	187.02	186.87	186.70
<b>Milk</b>					
Jan	20.37	—	—	—	—
Feb	20.35	20.13	20.31	20.45	20.70
Mar	21.81	21.35	21.51	21.31	21.66

**WEEKLY LIVESTOCK SLAUGHTER 02/05/22**

	Cattle	Hogs	Sheep
Week to Date:	639,000	2,436,000	29,000
Last Week:	643,000	2,526,000	30,000
Last Year:	652,000	2,673,000	35,000

## Missouri Weekly Cattle Auction Summary 2/07/22

Receipts: 23,833 Week ago: 35,653 Year ago: 30,228

Compared to last week, feeders sold steady to 2.00 higher, with several 500-700 lb. steers 2.00 to 5.00 higher. The supply of feeders was light to moderate. The week got off to a good start but business was brought to a standstill by midweek. The majority of sales remained dark due to a wide spread winter storm. Snow fall amounts varied from basically nothing in the northwest corner of the state to the heaviest being central to north east, where amounts reached and passed 10 inches. Farther south amounts of 2-6 inches were common with some ice mixed in before snow fell. Heavy winds caused drifting, which made many country roads impassable for a time. Temperatures got below zero in some areas, which was a big change from the 60 degrees that was seen just a couple days prior to the storm. Many farmers are already calving and the cold made for a few long nights, as farmers spent several hours outside to make sure any newborns got up and nursed. Not necessarily the highest prices, but a few notable load lots from this week included: 80 head of 657 lb. steers sold at Green City Livestock Auction for 191.00, 49 head of 724 lbs. steers sold at F and T Livestock Market for 171.25, several loads of heavy 7 weight steers sold at Joplin Regional stockyards in the upper 150's, and Kingsville Livestock Auction sold 62 head of 882 lb. steers for 156.85. The semi-annual Cattle Inventory Report was released on Monday. There weren't a lot of surprises overall. Everyone knew numbers would be lower nationwide, following the extreme drought that was seen over much of the major cattle producing areas. Missouri saw a 5% drop in beef cows which had calved, which equates to a loss of 94,000 head. For all cattle and calves, beef and dairy, the state saw a decline of 270,000 head, or 6% of the total herd. As of the Friday afternoon report, negotiated feedlot sales were just over 95K head. Live sales were mostly 138.00-140.00 and dressed sales mostly at 222.00, both gaining a few dollars this week. Boxed beef cutout values lost several dollars, choice closed on Friday at 279.81, down 10.61 and select at 276.05, down 7.36 from the previous week. The choice/select spread has narrowed to only 3.76. The Missouri Stocker Formula consist of 4211 head with a weighted average weight of 553.25 and a price value of 181.77, 2.18 higher than last week.

### MISSOURI GRAIN WEEKLY TRENDS

Compared to last Friday, Soybeans 0.73 to 0.98 higher, Wheat 0.23 lower, Corn 0.08 to 0.18 lower, Sorghum 0.15 to 0.25 lower.

Area	#1 Soybeans	#2 Soft Wheat	#2 Corn	#2 Grain Sorghum
<u>Kansas City</u>				
Friday**	14.75-14.85	7.49	6.44-6.46	6.51
Monday	14.96-15.03	7.24	6.34-6.36	6.41
Tuesday	15.29-15.39	7.32	6.40-6.45	6.50
Wednesday	15.45-15.55	7.18	6.28	6.38
Thursday	15.44-15.54	7.15	6.22-6.27	6.32
Friday	15.49-15.64	7.26	6.26-6.31	6.36
<u>St. Louis</u>				
Friday**	14.95-14.98	8.01-8.06	6.61-6.66	6.16
Monday	15.21	7.76-7.81	6.56-6.60	5.96-6.06
Tuesday	15.59	7.84-7.89	6.65-6.69	6.05
Wednesday	15.75-15.79	7.70-7.75	6.53-6.55	5.93
Thursday	15.78-15.81	7.67-7.72	6.49	5.87
Friday	15.91-15.93	7.78-7.83	6.53	5.91-6.01
<u>Central</u>				
Friday**	14.70-14.80	—	6.46	—
Monday	14.91-15.01	—	6.36	—
Tuesday	15.29-15.39	—	6.45	—
Wednesday	15.45-15.55	—	6.33	—
Thursday	15.44-15.54	—	6.27	—
Friday	15.54-15.64	—	6.31	—
<u>S.E. MO</u>				
Friday**	14.86-15.05	—	6.49-6.71	—
Monday	15.01-15.26	—	6.33-6.61	—
Tuesday	15.40-15.64	—	6.45-6.70	—
Wednesday	15.57-15.80	—	6.33-6.55	—
Thursday	15.57-15.74	—	6.20-6.47	—
Friday	15.76-15.84	—	6.39-6.51	—

(PRICES PER BUSHEL) \*NEW CROP \*\*PREVIOUS WEEK'S PRICES  
\*Most locations not providing cash wheat bids at this time, due to temporary transportation issues.\*

## Afternoon National Slaughter Cattle Review for 02/04/22

So far for Friday in the Southern Plains negotiated cash trading was limited on light demand. A few live purchases traded at 139.00. However, not enough for a full market trend. Thursday was the last reported market in the Southern Plains, with the Texas Panhandle at 140.00 and Kansas from 139.00-140.00. Thus far for Friday in Nebraska and Western Cornbelt negotiated cash trading was mostly inactive on very light demand. Not enough purchases for a market trend. Wednesday was the last reported market in these regions. In Nebraska live and dressed purchases traded from 138.00- 140.00 and 222.00, respectively. In the Western Cornbelt live and dressed purchases traded at 140.00 and 222.00, respectively.

Negotiated Cash Sales:					
Confirmed:	5250	Week Ago:	2904	Year Ago:	41,015
Week to date:	95,341	Week Ago:	77,548	Year Ago:	86,522

	Live Basis	Steers	Heifers
<b>Over 80% Choice</b>	138.00-140.00, avg 139.40	-	-
<b>65-80% Choice</b>	139.00-140.00, avg 139.04	139.00	-
<b>35-65% Choice</b>	139.00	-	-
<b>0-35% Choice</b>	-	-	-
<b>Total All Grades</b>	138.00-140.00, avg 139.13	139.00	-
<b>Dressed Basis</b>			
<b>Over 80% Choice</b>	-	-	-
<b>65-80% Choice</b>	-	-	-
<b>35-65% Choice</b>	-	-	-
<b>0-35% Choice</b>	-	-	-
<b>Total All Grades</b>	-	-	-

### MISSOURI WEEKLY HAY SUMMARY 02/03/22

The state saw a mixture of rain, snow, and ice mid-week. Combined with winds and low temperatures, caring for livestock was a challenge. Much of the ground was soft and not frozen prior to the storm, as the previous weekend was near 60 degrees. Anyone that has fed in those conditions knows it is just a mess trying to get around. Although winter weather is harsh on man and beast, the moisture is welcome as many areas need it before the growing season arrives. Farmers continue to watch fertilizer prices hit new records each week making for tough management decisions in the coming months. Hay piles seem to shrink quickly in this type of weather, luckily supplies were ample going into winter and the supply of hay is still moderate and demand is light to moderate and prices mostly steady. The Missouri Department of Agriculture has a hay directory visit <http://mda.mo.gov/abd/haydirectory/> for listings of hay <http://agebb.missouri.edu/haylst/>

Alfalfa - Supreme 200.00-250.00, small square 8.00-12.00 per bale  
Alfalfa - Premium 160.00-200.00  
Alfalfa - Good 120.00-160.00, small square 5.00-9.00 per bale  
Alfalfa - Fair 100.00-125.00  
Alfalfa/grass mix - Good/Premium small square 6.00-8.00 per bale  
Mixed grass - Good/Premium 80.00-140.00  
Mixed grass - Fair/Good 60.00-100.00, small square 4.00-6.00 per bale  
Mixed grass - Fair 25.00-55.00 per large round bale  
Wheat straw - 4.00-6.00 per small square bale