

Weekly Market Summary

Published by:
Missouri Department of Agriculture
Ag Business Development Division
Market News Program



Chris Chinn, Director
 Davin Althoff, Division Director
 Tony Hancock, Editor
<http://www.ams.usda.gov/marketnews.mo.gov>
<http://www.ams.usda.gov/marketnews.htm>

Michael L. Parson, Governor

Volume XLII, Number 7 ♦ P.O. Box 630, Jefferson City, MO 65102 ♦ (573) 751-4211 ♦ Monday, February 21, 2022

MISSOURI WEEKLY FEEDER CATTLE WEIGHTED AVERAGE REPORT

Receipts: 33,241 Week ago: 16,402 Year ago: 212
 Steers and Heifers Medium and Large 1—Weighted average weights and prices

STEERS: Medium and Large 1

326 lbs. 212.42	527 lbs. 206.76	716 lbs. 167.09	924 lbs. 149.23
378 lbs. 215.04	571 lbs. 196.76	771 lbs. 151.54	
427 lbs. 212.17	628 lbs. 183.10	824 lbs. 155.10	
474 lbs. 213.63	673 lbs. 173.19	866 lbs. 152.98	

HEIFERS: Medium and Large 1

332 lbs. 178.93	525 lbs. 173.87	719 lbs. 152.72
376 lbs. 181.32	574 lbs. 168.04	766 lbs. 147.31
429 lbs. 178.81	624 lbs. 161.46	819 lbs. 143.37
478 lbs. 179.18	673 lbs. 156.74	872 lbs. 137.70

Missouri Steer (Heifer) Stocker Formula for 2/21/2022

Monday's Missouri Stocker Formula consists of **7073 (7483)** head with a weighted average weight of **548.64 (543.15)** lbs. and a price value of **193.67 (166.21)**, 4.30 higher (4.39 higher) than last Monday.

This a rolling seven day calculated weighted value which combines all Feeder Steers reported by MDA/USDA Market News Service weighing from 400-649 lbs. in the Medium and Large 1 and Medium and Large 1-2 frame and muscle classifications, including all comment cattle except Brahman X. Heifer values are in parentheses.

SOUTH CENTRAL MISSOURI WEEKLY SUMMARY

(West Plains, Ava)

Receipts: 5075 Week ago: 3560 Year Ago: 0

Compared to last week, early week feeders under 700 lbs 10.00 to 15.00 higher, spots 20.00 higher and yearlings steady to firm; late week steers steady to firm, spots 5.00 higher and heifers uneven from 3.00 lower to 2.00 higher. Slaughter cows steady. Slaughter bulls steady to 2.00 lower.

STEERS:

Medium and Large 1

300-400 lbs.	200.00-225.00
400-500 lbs.	192.50-217.50
500-600 lbs.	185.00-217.00
600-700 lbs.	163.00-190.00
700-800 lbs.	153.00-162.00
800-850 lbs.	151.00-156.00

Holsteins

Large 3

Scarce

BRED COWS: Medium and Large 1 2-8 yrs 825-1590 lbs 2nd to 3rd stage 700.00-1375.00, 1st stage 600.00-1050.00 per head

BRED HEIFERS: Medium and Large 1-2 pkg 832 lbs 1st to 3rd stage 875.00 per head

HEIFERS:

Medium and Large 1

300-400 lbs.	172.50-189.00
400-500 lbs.	162.50-186.00
500-600 lbs.	150.00-184.00
600-700 lbs.	143.00-160.00
700-800 lbs.	144.00-149.00
800-850 lbs.	141.00-142.50

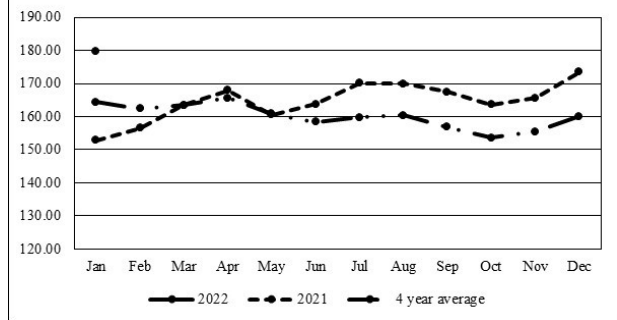
SLAUGHTER COWS: Breaking and Boning (70-85% lean) 67.00-80.00, , high dressing 76.00-90.00; low dressing 53.00-70.50. Lean (85-90%) 59.00-70.00

SLAUGHTER BULLS: Yield Grade 1-2 1025-2450 lbs 90.00-108.00; high dressing 108.00-130.00; low dressing 70.00-94.00

COW & CALF PAIRS: Medium and Large 1-2 2-8 yrs 1080-1255 lbs with 150-300 lb calves 1300.00 per pair

The Weekly Market Summary, as well as historical summaries, are available on our website <https://agmarketnews.mo.gov/summaries>
 Market News Hotline: 1-573-522-9244

Missouri Stocker Formula - Steers



*Graph is updated the first Monday of each month.

SOUTHWEST MISSOURI WEEKLY SUMMARY

(Joplin and Springfield)

Receipts: 12,004 Week Ago: 4129 Year ago: 0

Compared to last week, steer calves 2.00 to 10.00 higher, yearling steers uneven from 2.00 lower to 3.00 higher. Heifers early week 2.00 to 5.00 higher, late week mostly steady to 3.00 lower. Slaughter cows and bulls steady to 3.00 lower.

STEERS:

Medium and Large 1

300-400 lbs.	205.00-227.50
400-500 lbs.	200.00-223.00
500-600 lbs.	189.00-224.00
600-700 lbs.	160.00-189.00
700-800 lbs.	150.00-167.00
800-900 lbs.	151.00-159.00

HOLSTEINS:

Large 3

Scarce

BRED COWS: Medium and Large 1 2-8 yrs 1100-1575 lbs 2nd and 3rd stage 1435.00-1825.00, short and solid 1250.00-1335.00 per head. Medium and Large 1-2 2-8 yrs 1000-1675 lbs 2nd and 3rd stage 900.00-1450.00, 1st stage 825.00-1160.00, short and solid 2nd and 3rd stage 725.00-1325.00 per head

HEIFERS:

Medium and Large 1

300-400 lbs.	169.00-181.00
400-500 lbs.	160.00-184.00
500-600 lbs.	152.00-188.00
600-700 lbs.	144.00-167.00
700-800 lbs.	142.50-157.00
800-850 lbs.	142.50-148.50

SLAUGHTER COWS:

Breaking and Boning (70-85% lean) 69.00-83.50, , high dressing 81.00-92.00; low dressing 60.00-74.00. Lean (85-90%) 57.50-73.00

SLAUGHTER BULLS: Yield Grade 1-2 1180-2455 lbs 94.50-110.00; high dressing 109.00-119.00; low dressing 78.00-93.00

COW & CALF PAIRS: Medium and Large 1 2-8 years 1200-1700 lbs baby to 300 lbs calves 1400.00-1750.00, calves over 300 lbs 2125.00-2475.00 per pair. Medium and Large 1-2 2-8 yrs 950-1350 lbs baby to 300 lb calves 1025.00-1550.00 per pair.

WEST CENTRAL MISSOURI WEEKLY SUMMARY

(Kingsville, Windsor, Butler)

Receipts: 8093 Week ago: 5700 Year ago: 0

Compared to last week, steers and heifers steady to 7.00 higher. Slaughter cows steady.

FEEDER STEERS:
Medium and Large 1400-500 lbs. 204.00-232.00
500-600 lbs. 187.75-222.00
600-700 lbs. 171.75-196.00
700-800 lbs. 159.50-177.00
800-850 lbs. 155.25-165.00
900-950 lbs. 150.50-152.25FEEDER HEIFERS:
Medium and Large 1350-400 lbs. 164.00-200.00
400-500 lbs. 169.00-197.00
500-600 lbs. 160.00-187.50
600-700 lbs. 151.25-175.00
700-800 lbs. 141.50-155.00
800-900 lbs. 134.00-142.50SLAUGHTER BULLS: Yield Grade 1-2 1360-2215 lbs 94.50-110.50; high dressing 109.00-123.00; low dressing 83.00-92.00SLAUGHTER COWS: Breaking and Boning (70-85% lean) 68.00-85.00, high dressing 80.00-86.00; low dressing 71.00-72.00. Lean (85-90%) 57.00-67.50REPLACEMENT COWS: Medium and Large 1-2 2-8 yrs 1060-1330 lbs 2nd to 3rd stage 900.00-1225.00 per headCOW & CALF PAIRS: scarce**NORTHEAST MISSOURI WEEKLY SUMMARY**

(Bowling Green, Kingdom City, Palmyra)

Receipts: 4295 Week ago: 2746 Year ago: 602

Compared to last week feeders sold 3.00 to 12.00 higher, spots of 20.00 to 25.00 higher. Slaughter cows sold steady to firm.

FEEDER STEERS:
Medium and Large 1400-500 lbs. 191.00-220.00
500-600 lbs. 183.00-217.50
600-700 lbs. 169.00-184.00
700-800 lbs. 151.50-173.25
800-900 lbs. 150.25-155.00
Load 923 lbs. 148.75FEEDER HEIFERS:
Medium and Large 1350-400 lbs. 175.00-186.00
400-500 lbs. 169.00-194.00
500-600 lbs. 157.00-179.00
600-700 lbs. 150.00-164.00
700-750 lbs. 153.00-154.50
Pkg 871 lbs. 143.50SLAUGHTER BULLS: Yield Grade 1-2 1300-2470 lbs 91.00-106.50; high dressing 106.00-125.00; low dressing couple 84.00-92.50SLAUGHTER COWS: Breaking and Boning, (70-85% lean) 65.00-79.00; high dressing 75.00-88.50; low dressing 55.00-73.50. Lean (85-90%) 56.00-70.00SLAUGHTER STEERS: Choice 2-3 137.00-142.00. Select and Choice 1-3 134.00-135.00BRED COWS: Medium and Large 1 2-8 yrs 1200-1550 lbs 2nd and 3rd stage 1650.00-2175.00 per head. Medium and Large 1-2 2-8 yrs 1050-1525 lbs 2nd and 3rd stage 1300.00-1650.00 per head.SLAUGHTER HEIFERS: Choice 2-3 138.00-141.00**NORTH CENTRAL MISSOURI WEEKLY SUMMARY**

(Macon, Unionville, Green City, New Cambria)

Receipts: 3411 Week ago: 3483 Year ago: 0

Compared to two weeks ago, steers and heifers 1.00 to 8.00 higher, spots 15.00 to 20.00 higher early week. Slaughter cows steady to 6.00 higher.

FEEDER STEERS:
Medium and Large 1400-500 lbs. 207.00-231.50
500-600 lbs. 188.75-216.00
600-700 lbs. 174.00-197.00
700-800 lbs. 165.00-174.50
800-850 lbs. 152.50-156.25FEEDER HEIFERS:
Medium and Large 1400-500 lbs. 173.00-190.50
500-600 lbs. 158.00-182.50
600-700 lbs. 158.00-168.00
700-800 lbs. 152.75-155.50SLAUGHTER BULLS: Yield Grade 1-2 86.00-102.00; high dressing 99.00-113.00SLAUGHTER COWS: Breaking and Boning, (70-85% lean) 59.50-74.50; high dressing 74.50-83.00. Lean (85-90%) 51.00-65.00BRED COWS: ScarceCOW & CALF PAIRS: Scarce**SOUTHEAST MISSOURI WEEKLY SUMMARY**

(Jackson and Farmington)

Receipts: 2754 Week ago: 1093 Year ago: 0

Compared to last week, steers and heifers steady to 15.00 higher. Slaughter cows steady. Slaughter bulls 4.00 higher.

FEEDER STEERS:
Medium and Large 1300-400 lbs. 183.00-215.00
400-500 lbs. 178.00-207.00
500-600 lbs. 173.00-197.00
600-700 lbs. 148.00-180.00
700-800 lbs. 141.00-167.00FEEDER HEIFERS:
Medium and Large 1300-400 lbs. 157.00-181.00
400-500 lbs. 150.00-176.00
500-600 lbs. 147.00-173.00
600-700 lbs. 141.00-165.00
700-800 lbs. 139.00-149.00SLAUGHTER BULLS: Yield Grade 1-2 1160-2335 lbs 75.00-95.00, high dressing 92.00-115.00SLAUGHTER COWS: Breaking and Boning (75-85% lean) 62.00-75.00; high dressing 74.00-84.00. Lean (85-90% lean) 50.00-67.00REPLACEMENT COWS: Medium and Large 2 2-8 yrs 970-1335 lbs 3rd stage 800.00-1000.00 per headCOW & CALF PAIRS: Scarce**EAST CENTRAL MISSOURI WEEKLY SUMMARY**

(Cuba, Vienna)

Receipts: 3010 Week ago: 1187 Year ago: 0

Compared to last week, steers and heifers 4.00 to 12.00 higher. Slaughter cows 1.00 to 3.00 higher.

FEEDER STEERS:
Medium and Large 1400-500 lbs. 204.00-213.00
500-600 lbs. 184.50-210.00
600-700 lbs. 165.00-192.50
700-750 lbs. 156.50-171.00
800-850 lbs. 151.00-157.00FEEDER HEIFERS:
Medium and Large 1400-500 lbs. 176.00-191.50
500-600 lbs. 163.00-185.00
600-700 lbs. 148.00-161.50
700-800 lbs. 142.00-154.75
800-900 lbs. 141.00-147.00SLAUGHTER BULLS: Yield Grade 1-2 1475-2125 lbs 95.00-108.00, high dressing 104.00-116.00, low dressing 85.00-91.00SLAUGHTER COWS: Breaking and Boning (70-85% lean) 68.50-80.00; high dressing 78.00-82.50. Lean (85-90%) 52.00-67.50BRED COWS: Medium and Large 1-2 2-8 yrs 1075-1485 lbs 2nd to 3rd stage 875.00-1210.00 per headCOW & CALF PAIRS: Scarce**MISSOURI WEEKLY DIRECT
SLAUGHTER CATTLE REPORT 02/18/22**

Weekly Receipts: 400 Week ago: 680 Year ago: 460

Trading as of Friday morning: light to moderate with flat dressed sales mostly 2.00 higher, with one load steady at 224.00. Grid dressed sales 4.00 higher.

LIVE STEERS & HEIFERS: ScarceDRESSED STEERS & HEIFERS: 4 loads Thu flat 226.00, 1 load flat 224.00GRADE AND WEIGHT (Grid): 5 loads Thu 232.00**NATIONAL DIRECT DELIVERED FEEDER PIG REPORT**

02/18/22 Receipts: 70,460 Week ago: 92,586 Year Ago: 62,515 Receipts include 30% formulated prices. Early weaned pigs 10-12 lbs. basis: Formula 49.60-90.53, weighted average 71.96. Cash 70.00-95.00, weighted average 89.69. Feeder pigs 40 pounds basis: Cash 102.00-123.00, weighted average 115.82

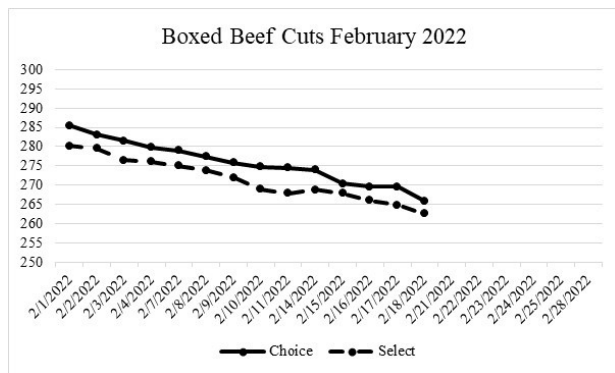
**NATIONAL DAILY DIRECT PRIOR DAY HOG REPORTS
FOR 02/18/22**BARROWS AND GILTS (Carcass Basis): 3705 head Base Carcass Price, unavailable due to confidentiality. 5 day rolling average 88.28SOWS (Live Basis): 7470 head
300-500 lbs. 52.00-80.00
Over 500 lbs. 57.00-85.00

WHOLESALE FEEDSTUFFS PRICES 02/18/22
(DOLLARS PER TON-BULK BASIS)

Area	Soybean Hulls - Bulk	Soybean Meal 48% Solvent	Cottonseed Meal 41% Solvent	Corn Gluten Pellets	Wheat Middlings
Kansas City	160.00	452.40	387.50	269.00	210.00
St. Louis	189.60	459.90	382.50	257.50	183.00

NATIONAL BOXED BEEF CUTOUT/BOXED BEEF CUTS

Date	Choice	Select	Total Loads
02/14	273.96	268.75	76
02/15	270.37	267.82	165
02/16	269.62	266.08	111
02/17	269.59	264.85	161
02/18	265.85	262.63	121
5 Day Simple Average	269.88	266.03	



Missouri Weekly Sheep/Goat Auction Summary 02/21/22

Receipts: 540 Two Weeks Ago: 348 Last Year: 0

(All prices CWT unless noted.)

SHEEP: Slaughter Lambs: woolled and shorn Choice and Prime 1-3 85-115 lbs 255.00-292.50. Choice and Prime 1-2 55-75 lbs 400.00-415.00. hair Choice and Prime 1 55-70 lbs 400.00-415.00. Choice and Prime 1-3 45-75 lbs 300.00-395.00. Ewes: Utility and Good 2 55-170 lbs 160.00-190.00. Utility and Good 2-3 60-90 lbs 130.00-165.00. hair Good 2-3 few 100-145 lbs 220.00-235.00, pkg fancy 300.00. Replacement Ewes: Medium and Large 1-2 2-4 years exposed 90-118 lbs 210.00-290.00. GOATS: Feeder Kids: Selection 1 34-44 lbs 365.00-425.00, replacements 450.00-490.00. Selection 2 30-50 lbs 265.00-345.00. Slaughter Kids: Selection 1 50-72 lbs 365.00-440.00. Selection 1-2 55-70 lbs 350.00-395.00. Nannies Selection 1-2 65-125 lbs 205.00-285.00. Bucks Selection 1-2 80-150 lbs 200.00-290.00.

WEEKLY COMMODITY GRAIN FUTURES TRENDS

Compared to last Friday, Soybeans 0.17 to 0.20 higher, Wheat steady to 0.05 higher, Corn 0.01 to 0.03 higher, KC Wheat 0.11 to 0.13 higher, Soybean Meal 1.30 to 8.70 lower.

Daily Grain Futures Closes

	Mon.	Tues.	Wed.	Thu.	Fri.
Soybeans					
Mar	1570	1551 1/4	1587 1/2	1592	1601 1/2
May	1574	1555 3/4	1591 1/4	1596	1603 1/2
Jul	1572	1555 1/4	1589	1593 1/2	1601
Aug	1541 3/4	1524	1554 3/4	1559 1/4	1565 1/2
Sep	1477	1464 1/4	1491	1496	1499
Wheat					
Mar	799 1/4	779 3/4	780 1/2	798	797
May	805 1/2	785 3/4	786 1/4	804 3/4	804
Jul	801 3/4	782	782 1/2	800 1/4	800 3/4
Sep	801 3/4	783 1/2	784	802 1/4	802 1/2
Dec	804 1/2	787	788	807	806 3/4
Corn					
Mar	655 3/4	638	647	650	654 1/4
May	655 1/4	637 1/2	645 3/4	649 1/4	652 3/4
Jul	650 1/2	633 3/4	640 3/4	645	647
Sep	611 1/4	600 1/2	605 1/4	607 3/4	608 3/4
Dec	598 1/4	589 3/4	593 3/4	596 1/2	597 3/4
KC Wheat					
Mar	828 1/2	806	808	823	835 1/4
May	831	809 3/4	812	827 3/4	840
Jul	832 1/4	810 1/2	813 1/2	829	840 3/4
Sep	835 1/2	815	818	833 1/4	844 1/2
Dec	843	822 3/4	825 3/4	840 3/4	851 3/4
SB Meal					
Mar	448.40	438.80	449.40	449.20	447.90
May	446.80	437.10	447.30	447.50	445.70
Jul	445.70	436.60	446.40	447.10	445.10
Aug	436.70	428.70	438.10	439.40	437.60
Sep	424.80	419.00	427.80	429.90	427.90

WEEKLY COMMODITY FUTURES TRENDS

Compared to last Friday, Live Cattle 0.38 to 1.38 higher, except Apr 0.30 lower, Lean Hogs 5.92 to 7.18 higher, Feeder Cattle 0.15 to 1.48 higher, except Mar 0.80 lower.

Daily Futures Closes

	Mon.	Tues.	Wed.	Thu.	Fri.
Cattle					
Feb	142.42	142.90	143.12	143.40	143.25
Apr	146.35	146.90	146.92	146.77	145.87
Jun	141.45	142.12	142.25	142.15	141.50
Aug	140.35	140.95	141.00	140.75	140.50
Oct	145.42	145.97	146.00	145.80	145.67
Lean Hogs					
Feb	91.62	—	—	—	—
Apr	102.32	104.15	105.40	107.57	109.40
May	106.50	108.00	109.15	111.32	113.35
Jun	111.85	113.70	114.95	117.17	118.62
Jul	111.25	112.95	114.00	116.10	117.52
Fdr Cat					
Mar	166.87	168.72	167.45	166.20	165.42
Apr	171.50	172.55	172.17	171.15	170.85
May	175.55	176.92	176.55	175.72	175.90
Aug	184.95	186.65	186.47	185.72	186.07
Sep	186.37	188.12	187.82	187.12	187.65
Milk					
Feb	20.82	20.80	20.75	20.88	20.90
Mar	22.81	22.97	22.31	22.35	22.40
Apr	23.25	23.21	22.71	22.86	22.81

WEEKLY LIVESTOCK SLAUGHTER 02/19/22

	Cattle	Hogs	Sheep
Week to Date:	663,000	2,507,000	28,000
Last Week:	659,000	2,516,000	27,000
Last Year:	549,000	2,413,000	33,000

Explanatory Notes: Stage - Represents estimated lambing/kidding period (Open, Exposed, Bred, Fall = Sep-Nov, Win = Dec-Feb, Spr = Mar-May, Sum=Jun-Aug

Missouri Weekly Cattle Auction Summary 2/21/22

Receipts: 33,241 Week ago: 16,402 Year ago: 212

Compared to last week, feeders under 750 lbs. sold 5.00 to 10.00 higher, with several lighter featherweights seeing spots extremely higher on grazing type calves. Heavier weights over 750 lbs. sold mostly steady to 3.00 higher although, there was a touch of weakness noted at times this week. The supply of feeders was moderate and demand is good to very good. As always this time of year orders for summer grazers are abundant and those types seeing the best demand. Prices on those types of calves has been very good making some people question what even is high any more. This was evidenced by a few 600-650 lb. steers that got very close or just slightly broke the 200.00 mark this week. That is by no means where the bulk of the trade is, for those prices calves have to be in the perfect condition and have all the paperwork available but none the less it was shown as possible. Heavier weight cattle are seeing some pressure as feedlots are said to be packed full currently and putting those weights on grass just doesn't pencil out well. Slaughter volume has been running at a good clip which is good for the markets so that backups of cattle don't occur. Last week was the biggest week of the year so far with the estimated weekly slaughter at 663,000 head. Feedlot volume for negotiated sales totaled 98,691 head with the weighted average live price of 142.29 and dressed sales averaged 226.04. Boxed beef cutouts continue to suffer from the seasonal decline which doesn't normally flip till grilling season. Choice closed on Friday at 265.85, down 8.67 and select at 262.63, down 5.20. The Missouri Stocker Formula consist of 7073 head with a weighted average weight of 548.64 lbs. and a price value of 193.67, up 4.30 compared to last week.

MISSOURI GRAIN WEEKLY TRENDS

Compared to last Friday, Soybeans 0.09 to 0.19 higher, Wheat 0.01 lower, Corn 0.01 to 0.09 higher, Sorghum 0.03 higher.

Area	#1 Soybeans	#2 Soft Wheat	#2 Corn	#2 Grain Sorghum
Kansas City				
Friday**	15.73-15.83	7.61	6.56-6.61	6.66
Monday	15.60-15.70	7.62	6.61-6.66	6.71
Tuesday	15.36-15.51	7.43	6.43-6.48	6.53
Wednesday	15.73-15.88	7.44	6.52-6.57	6.62
Thursday	15.77-15.92	7.61	6.55-6.60	6.65
Friday	15.87-16.02	7.60	6.59-6.64	6.69
St. Louis				
Friday**	16.18-16.24	7.92-8.13	6.70-6.84	6.21-6.31
Monday	16.05-16.11	7.93-8.14	6.84-6.89	6.26-6.36
Tuesday	15.88-15.92	7.74-7.95	6.68-6.71	6.08-6.18
Wednesday	16.18-16.19	7.75-7.96	6.77-6.82	6.17-6.27
Thursday	16.23	7.92-8.13	6.83-6.85	6.20-6.30
Friday	16.33	7.91-8.12	6.88-6.90	6.24-6.34
Central				
Friday**	15.83-15.93	—	6.61	—
Monday	15.70-15.80	—	6.66	—
Tuesday	15.51-15.61	—	6.48	—
Wednesday	15.88-15.98	—	6.57	—
Thursday	15.92-16.02	—	6.60	—
Friday	16.02-16.12	—	6.64	—
S.E. MO				
Friday**	16.03-16.14	—	6.71-6.76	—
Monday	15.90-16.02	—	6.73-6.81	—
Tuesday	15.71-15.83	—	6.58-6.63	—
Wednesday	16.08-16.18	—	6.72-6.73	—
Thursday	16.12-16.22	—	6.75-6.76	—
Friday	16.24-16.32	—	6.79-6.81	—

(PRICES PER BUSHEL) *NEW CROP **PREVIOUS WEEK'S PRICES
Most locations not providing cash wheat bids at this time, due to temporary transportation issues.

Afternoon National Slaughter Cattle Review for 02/18/22

So far for Friday in the Western Cornbelt negotiated cash trading has been limited with light demand. A few live purchases traded at 144.00, however, not enough for a full market trend. Wednesday was the last reported market in the Western Cornbelt with live and dressed purchases from 142.00- 143.00 and at 226.00, respectively. In the Southern Plains and Nebraska negotiated cash trading has been mostly inactive on light demand, not enough for a market trend. In the Texas Panhandle the last reported market was on Thursday with live purchases at 142.00. Wednesday was the last reported market in Kansas and Nebraska with live purchases at 142.00 and dressed purchases in Nebraska at 226.00.

Negotiated Cash Sales:					
Confirmed:	2396	Week Ago:	3844	Year Ago:	20,235
Week to date:	94,340	Week Ago:	102,022	Year Ago:	65,322
Live Basis		Steers		Heifers	
Over 80% Choice		144.00		142.00-144.00, avg 143.00	
65-80% Choice		142.00		-	
35-65% Choice		-		-	
0-35% Choice		-		-	
Total All Grades		142.00-144.00, avg 143.00		142.00-144.00, avg 143.00	
Dressed Basis					
Over 80% Choice		226.00		-	
65-80% Choice		-		-	
35-65% Choice		-		-	
0-35% Choice		-		-	
Total All Grades		226.00		-	

MISSOURI WEEKLY HAY SUMMARY 02/17/22

Just as fast as weather in the 60's came, it left and brought more snow and freezing temperatures back across the state. That unstable cycle has seemed to be the case weekly all winter long. This front brought some rain, which is much needed, even though dealing with the mud aspect of it isn't much fun. Just under 40 percent of the state is currently listed as abnormally dry on the latest drought monitor and producers would like to see that number disappear before the growing season starts. Hay supplies are moderate, demand is light to moderate and hay prices mostly steady. The Missouri Department of Agriculture has a hay directory visit <http://mda.mo.gov/abd/haydirectory/> for listings of hay <http://agebb.missouri.edu/haylst/>

- Alfalfa - Supreme 200.00-250.00, small square 8.00-12.00 per bale
- Alfalfa - Premium 160.00-200.00
- Alfalfa - Good 120.00-160.00, small square 5.00-9.00 per bale
- Alfalfa - Fair 100.00-125.00
- Alfalfa/grass mix - Good/Premium small square 6.00-8.00 per bale
- Mixed grass - Good/Premium 80.00-140.00
- Mixed grass - Fair/Good 60.00-100.00, small square 4.00-6.00 per bale
- Mixed grass - Fair 25.00-55.00 per large round bale
- Wheat straw - 4.00-6.00 per small square bale