

Weekly Market Summary

Published by:
Missouri Department of Agriculture
Ag Business Development Division
Market News Program



Chris Chinn, Director
Jill Wood, Division Director
Tony Hancock, Editor
[agmarketnews.mo.gov](http://www.ams.usda.gov/marketnews.htm)
<http://www.ams.usda.gov/marketnews.htm>

Michael L. Parson, Governor

Volume XLII, Number 28 ♦ P.O. Box 630, Jefferson City, MO 65102 ♦ (573) 751-4211 ♦ Monday, July 18, 2022

MISSOURI WEEKLY FEEDER CATTLE WEIGHTED AVERAGE REPORT

Receipts: 37,897 Week ago: 10,886 Year ago: 24,784

Steers and Heifers Medium and Large 1—Weighted average weights and prices

STEERS: Medium and Large 1

324 lbs. 201.10	529 lbs. 204.45	724 lbs. 180.78	941 lbs. 154.30
376 lbs. 217.48	575 lbs. 201.75	772 lbs. 169.67	
427 lbs. 206.63	628 lbs. 196.59	835 lbs. 170.34	
480 lbs. 204.40	676 lbs. 185.39	865 lbs. 171.15	

HEIFERS: Medium and Large 1

327 lbs. 180.71	527 lbs. 172.18	720 lbs. 160.95
380 lbs. 185.92	569 lbs. 171.18	768 lbs. 156.43
424 lbs. 180.80	622 lbs. 166.33	811 lbs. 152.55
475 lbs. 179.87	675 lbs. 165.95	

Missouri Steer (Heifer) Stocker Formula for 07/18/2022

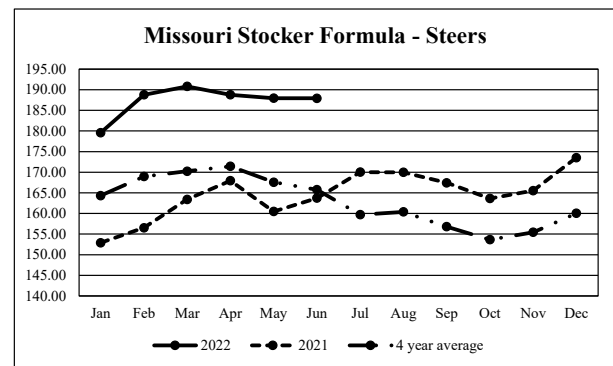
Monday's Missouri Stocker Formula consists of 7910 (7625) head with a weighted average weight of 553.55 (539.35) lbs. and a price value of 193.71 (167.47), 1.03 lower (6.76 lower) than last Monday.

This a rolling seven day calculated weighted value which combines all Feeder Steers reported by MDA/USDA Market News Service weighing from 400-649 lbs. in the Medium and Large 1 and Medium and Large 1-2 frame and muscle classifications, including all comment cattle except Brahman X. Heifer values are in parentheses.

Missouri Weekly Cattle Auction Summary 07/18/22

Compared to last week, feeders sold mostly 5.00 higher. Looking only at numbers on paper that might not appear the case, but one has to remember last week was a holiday shorten week with only a few special sales with very high quality and large drafts of cattle. Given that most reporters had to look back two weeks ago to make comparisons and trends were several dollars higher as they had to play catch up with gains over two week. A couple of market highlights from this week included 120 head of 848 lb. steers which sold for 185.00 on Monday at Callaway Livestock Center. Another noteworthy sale was 221 head of 739 lb. steers which sold for 193.10 at Kingsville Livestock Market on Tuesday. The Supply of feeders was moderate to heavy, not only was there a week of missed sales to catch up with dry conditions in the southern half of the state are really starting to take a toll and bringing several calves to town that otherwise would still be at home. The dryness is also bringing very large numbers of cows to town as many producers are being forced to reduce herd size as there just isn't enough grass to maintain inventory levels and feeding this early in the year isn't feasible given lower hay production as well. The cull cow market has been very strong for several months which made these decisions at least a bit less painful, however supplies of cull cows from neighboring states like OK and TX have led to an oversupply and the market took a big hit mid-week and fell 10.00-12.00 at most auctions. Wednesday's Cow and Bull sale at Ozark's Regional Stockyards was the largest that barn has ever seen on a cow day and all barns throughout that region have been seeing larger than normal runs of cows over the last month. Reports also came in of some farmers in SW MO giving up on the corn crop and deciding to start chopping although though there is very little in the way of any ears, there is still feed value currently as silage. Conditions are quite different however as once gets to the far northern third of the state where rains have been much more timely, especially since the beginning of the month. Making the difference in pastures and crops from the south to the north drastically different. Negotiated feedlot sales as of Friday were right at 80K head for the week. Live sales in the south were reported at mostly 137.00, in the north sales were from 140.00-145.00 and dressed sales in the north mostly 228.00-230.00. Boxed beef cutouts closed on Friday with choice at 268.91, up 1.02 and select at 241.79, down 0.06 from last Friday. The Missouri Stocker Formula consist of 7910 head with a weighted average of 553.55 lbs. and a price value of 193.71, 1.03 lower than a week ago. The steer/heifer spread is 26.24.

The Weekly Market Summary, as well as historical summaries, are available on our website <https://agmarketnews.mo.gov/summaries>
Market News Hotline: 1-573-522-9244

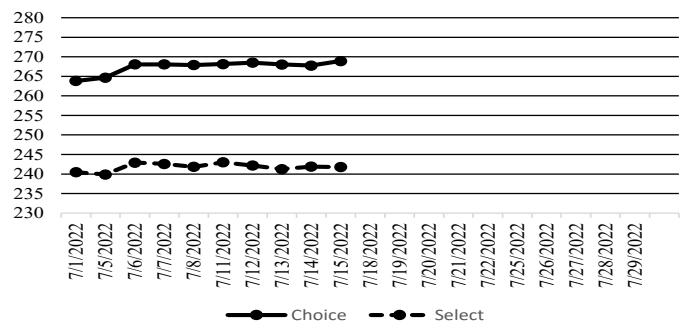


*Graph is updated the first Monday of each month.

NATIONAL BOXED BEEF CUTOUT/BOXED BEEF CUTS

DATE	CHOICE	SELECT	TOTAL LOADS
07/11	268.14	243.00	113
07/12	268.51	242.17	178
07/13	268.05	241.26	119
07/14	267.75	241.91	110
07/15	268.91	241.79	82
5 Day Simple Average	268.27	242.03	

Boxed Beef Cuts July 2022



WEEKLY LIVESTOCK SLAUGHTER 07/16/22

	CATTLE	HOGS	SHEEP
Week to Date:	677,000	2,255,000	33,000
Last Week:	593,000	1,971,000	25,000
Last Year:	650,000	2,288,000	40,000

SOUTHWEST MISSOURI WEEKLY SUMMARY

(Joplin and Springfield)

Receipts: 16,066 Week Ago: 1293 Year ago: 9118

Compared to the most recent sales, steers and heifers steady to 7.00 higher. Slaughter cows 8.00 to 13.00 lower. Slaughter bulls 6.00 to 9.00 lower.

FEEDER STEERS:
Medium and Large 1

400-500 lbs.	190.00-207.00
500-600 lbs.	186.50-209.00
600-700 lbs.	170.50-199.00
700-800 lbs.	160.00-180.00
800-900 lbs.	163.00-173.50
900-950 lbs.	148.00-155.25

FEEDER HEIFERS:
Medium and Large 1

350-400 lbs.	173.00-185.00
400-500 lbs.	163.00-184.50
500-600 lbs.	154.50-174.50
600-700 lbs.	146.50-170.00
700-800 lbs.	152.00-166.50
800-850 lbs.	151.50-154.00

FEEDER HOLSTEIN STEERS
Large 3

450-500 lbs.	114.00-116.00
500-600 lbs.	111.00-121.00
600-700 lbs.	111.00-129.50
750-800 lbs.	123.50-128.00
800-850 lbs.	108.00-124.50
54 hd 971 lbs.	119.85

SLAUGHTER COWS: Breaking and Boning (70-85% lean) 62.50-91.00, high dressing 77.00-98.00; low dressing 61.00-78.00. Lean (85-90%) 61.00-79.50

SLAUGHTER BULLS: Yield Grade 1-2 1230-2595 lbs. 95.00-114.00; high dressing 109.00-129.00; low dressing 85.00-98.00

BRED COWS: Medium and Large 1 2-8 yrs 1230-1460 lbs 1275.00-1300.00 per head. Medium and Large 1-2 2-8 yrs 895-1340 lbs 2nd to 3rd stage 750.00-1175.00, 1st stage 600.00-975.00; over 8 yrs 948-1145 lbs 2nd to 3rd stage 650.00-875.00 per head.

COW & CALF PAIRS: Medium and Large 1 2-8 yrs 1190-1568 lbs with 150 to over 300 lb calves 1525.00-1685.00; 2-8 yrs 1370 lbs rebred 1st stage with over 300 lb calves 1710.00 per pair. Medium and Large 1-2 1000-1605 lbs with baby to over 300 lb calves 1000.00-1400.00; fancy pairs 1550.00 per pair

SOUTH CENTRAL MISSOURI WEEKLY SUMMARY

(West Plains, Ava)

Receipts: 9648 Week ago: 6103 Year Ago: 5779

Compared to last week, steers and heifers steady to 5.00 higher, spots 10.00 higher late week, except some steer calves early week 3.00 lower. Slaughter cows early week 4.00 to 6.00 lower, late week 11.00 to 14.00 lower. Slaughter bulls 4.00 to 9.00 lower.

FEEDER STEERS:
Medium and Large 1

350-400 lbs.	199.00-206.00
400-500 lbs.	190.00-209.00
500-600 lbs.	186.00-205.00
600-700 lbs.	180.00-200.00
700-800 lbs.	160.00-182.00
800-900 lbs.	165.00-166.75

FEEDER HEIFERS:
Medium and Large 1

300-400 lbs.	160.00-171.00
400-500 lbs.	160.00-175.00
500-600 lbs.	153.00-174.00
600-700 lbs.	151.00-167.00
700-800 lbs.	145.00-160.00
800-900 lbs.	137.00-148.00

FEEDER HOLSTEIN STEERS
Large 3

13 hd 615 lbs.	93.00
----------------	-------

SLAUGHTER COWS: Breaking and Boning (70-85% lean) 65.00-85.00, high dressing 74.50-93.00; low dressing 55.00-75.00. Lean (85-90%) 60.00-77.00

SLAUGHTER BULLS: Yield Grade 1-2 1160-2220 lbs. 99.00-113.00; high dressing 109.00-120.00; low dressing 92.00-98.00

BRED COWS: Medium and Large 1-2 2-8 yrs 1110-1320 lbs 2nd to 3rd stage 975.00-1250.00 per head

COW & CALF PAIRS: Medium and Large 1-2 2-8 yrs 1152-1225 lbs with 150-300 lb calves 1375.00-1525.00 per pair

WEST CENTRAL MISSOURI WEEKLY SUMMARY

(Kingsville, Windsor, Butler)

Receipts: 6271 Week ago: 973 Year ago: 3425

Compared to last week, the majority of steers and heifers 3.00 to 8.00 higher, spots 10.00 to 13.00 higher. Slaughter cows 3.00 to 10.00 lower.

FEEDER STEERS:
Medium and Large 1

400-500 lbs.	208.00-232.50
500-600 lbs.	190.00-221.00
600-700 lbs.	175.50-208.00
700-800 lbs.	170.50-193.50
800-900 lbs.	163.00-173.85

FEEDER HEIFERS:
Medium and Large 1

400-500 lbs.	176.00-216.00
500-600 lbs.	164.50-194.50
600-700 lbs.	158.00-186.00
700-800 lbs.	150.00-167.00
98 hd 807 lbs.	153.60

SLAUGHTER BULLS: Yield Grade 1-2 1155-2140 lbs 97.50-110.50; high dressing 109.00-123.00; low dressing 84.00-94.00

SLAUGHTER COWS: Breaking and Boning (70-85% lean) 68.00-93.00, high dressing 77.00-107.00. Lean (85-90%) 61.00-84.00

BRED COWS: Medium and Large 1-2 2-8 yrs 938-1206 lbs 2nd to 3rd stage 1185.00-1475.00, 1st stage 900.00 per head

COW & CALF PAIRS: Scarce

NORTHEAST MISSOURI WEEKLY SUMMARY

(Bowling Green, Kingdom City, Palmyra)

Receipts: 6470 Week ago: 1546 Year ago: 4215

Compared to last week, steer calves under 700 lbs sold 5.00-10.00 higher, heavier weights sold with a sharply higher undertone. Heifers sold 3.00-7.00n higher. Slaughter cows sold 5.00 to 12.00 lower.

FEEDER STEERS:
Medium and Large 1

400-500 lbs.	213.00-230.00
500-600 lbs.	198.50-222.75
600-700 lbs.	183.00-210.00
700-800 lbs.	164.50-193.25
800-900 lbs.	168.00-185.00

FEEDER HEIFERS:
Medium and Large 1

300-400 lbs.	198.00-208.00
400-500 lbs.	174.00-205.00
500-600 lbs.	170.50-190.00
600-700 lbs.	168.75-181.00

SLAUGHTER BULLS: Yield Grade 1-2 1350-2475 lbs. 106.00-118.00; high dressing 115.00-127.00

SLAUGHTER COWS: Breaking and Boning, (70-85% lean) 77.00-92.50; high dressing 85.00-107.50; low dressing 70.00-86.00. Lean (85-90%) 72.50-85.00

SLAUGHTER STEERS: Choice 2 -3 142.00-151.00 Select and Choice 1-3 136.00-141.50

BRED COWS: Medium and Large 1-2 2-8 yrs 1225-1400 lbs 2nd and 3rd stage 1210.00-1700.00, few up to 1900.00 per head

SLAUGHTER HEIFERS: Choice 2-3 142.00-150.00 Select and Choice 1-3 139.00-145.00

COW & CALF PAIRS: Medium and Large 1-2 2-8 yrs 1050-1200 lbs 150-300 lb calves 1550.00-2200.00

NORTH CENTRAL MISSOURI WEEKLY SUMMARY

(Macon, Unionville, Green City, New Cambria) (W/E 7/8/22)

Receipts: 3381 Week ago: 4674 Year ago: 4771

Compared to two weeks ago, steers under 600 lbs steady, heavier weight steers and all weights of heifers 5.00 to 10.00 higher, spots sharply higher. Slaughter cows steady.

*Sale barns on a summer schedule; may not have a sale each week.

FEEDER STEERS:
Medium and Large 1

400-500 lbs.	212.50-237.00
500-600 lbs.	204.50-210.00
600-700 lbs.	178.50-214.00
700-800 lbs.	176.00-194.00
800-900 lbs.	175.00-180.50
60 hd 925 lbs.	170.35

FEEDER HEIFERS:
Medium and Large 1

400-500 lbs.	182.50-193.50
500-600 lbs.	180.75-200.00
600-700 lbs.	172.50-185.50
700-800 lbs.	159.75-164.00

SLAUGHTER BULLS: Yield Grade 1-2 couple 1490-1500 lbs 98.50-99.00

SLAUGHTER COWS: Breaking and Boning, (70-85% lean) 81.00-87.50. Lean (85-90%) 74.00-81.50

BRED COWS: Scarce

COW & CALF PAIRS: Scarce

SOUTHEAST MISSOURI WEEKLY SUMMARY

(Jackson and Farmington)

Receipts: 2199 Two Weeks ago: 1173 Year ago: 1308
 Compared to two weeks ago, steers and heifers steady to 10.00 higher.
 Slaughter cows 4.00 lower. Slaughter bulls 3.00 to 7.00 lower.

FEEDER STEERS:

Medium and Large 1

300-400 lbs.	175.00-202.50
400-500 lbs.	170.00-197.00
500-600 lbs.	170.00-199.00
600-700 lbs.	147.50-182.00
700-800 lbs.	151.00-172.00

FEEDER HEIFERS:

Medium and Large 1

300-400 lbs.	141.00-188.00
400-500 lbs.	145.00-177.00
500-600 lbs.	143.00-176.00
600-700 lbs.	140.00-162.00

SLAUGHTER BULLS: Yield
 Grade 1-2 1025-2070 lbs. 80.00-103.00, high dressing 107.00-119.00

SLAUGHTER COWS: Breaking and Boning (75-85% lean) 65.00-81.50; high dressing 75.50-90.00. Lean (85-90% lean) 50.00-70.00

BRED COWS: Medium and Large 2 2-8 yrs 1010-1340 lbs 1st stage 700.00-750.00, 3rd stage 850.00-1400.00 per head

COW & CALF PAIRS: Scarce

EAST CENTRAL MISSOURI WEEKLY SUMMARY

(Cuba, Vienna)

Receipts: 3594 Two Weeks ago: 3090 Year ago: 3091
 Compared to two weeks ago, steers steady to 10.00 higher and heifers 2.00 to 12.00 higher. Slaughter cows 4.00 to 10.00 lower.

FEEDER STEERS:

Medium and Large 1

350-400 lbs.	209.00-216.00
400-500 lbs.	194.00-209.00
500-600 lbs.	191.00-210.25
600-700 lbs.	171.00-199.25
700-800 lbs.	167.00-180.00
800-900 lbs.	167.00-175.50

FEEDER HEIFERS:

Medium and Large 1

400-500 lbs.	177.00-199.50
500-600 lbs.	159.50-190.00
600-700 lbs.	152.00-167.00
700-800 lbs.	151.50-165.50
800-850 lbs.	136.00-153.00

SLAUGHTER BULLS: Yield
 Grade 1-2 1255-2130 lbs 95.00-117.00; few high dressing 109.00-117.50; low dressing 80.00-94.00

SLAUGHTER COWS: Breaking and Boning, (70-85% lean) 76.0-83.50; high dressing 79.75-92.00; low dressing 70.00-76.00. Lean (85-90%) 67.00-76.00

BRED COWS: Medium and Large 1-2 2-8 yrs 1125-1345 lbs 2nd to 3rd stage 935.00-1190.00 per head

COW & CALF PAIRS: Medium and Large 1-2 3 pairs 2-8 yrs 1085 lbs with baby to 150 lb calves 1425.00 per pair

NORTHWEST MISSOURI WEEKLY SUMMARY

(Tina)

Receipts: 1174 Three weeks ago: 1104
 Compared to the last sale three weeks ago, steers sold 2.00 to 6.00 higher and heifers sold 6.00 to 10.00 higher, spots 15.00 to 20.00 higher in both the steer and heifer market. Due to technical problems, slaughter cow and bull data were not able to be captured this week. Close to 200 head of cows and bulls sold and the sale barn provided data for bulk of cows and bulls.

FEEDER STEERS:

Medium and Large 1

350-400 lbs.	222.50-230.00
450-500 lbs.	209.00-215.25
500-600 lbs.	195.50-213.00
600-700 lbs.	183.00-204.00
700-750 lbs.	169.00-179.75

FEEDER HEIFERS:

Medium and Large 1

400-500 lbs.	180.00-200.00
500-600 lbs.	170.00-185.50
600-700 lbs.	163.00-170.50
700-800 lbs.	159.00-165.50

SLAUGHTER BULLS: Yield
 Grade 1-2 bulk 100.00-115.50

SLAUGHTER COWS: bulk average dressing 82.00-96.00, high dressing 96.00-106.00

BRED COWS: Scarce

COW & CALF PAIRS: Scarce

AFTERNOON NATIONAL SLAUGHTER CATTLE REVIEW 07/15/22

So far for Friday in the Southern Plains and Nebraska negotiated cash trading has been at a standstill. In the Western Cornbelt negotiated cash trading has been mostly inactive on light demand Not enough purchases for a market trend. Wednesday was the last reported market in these regions. In the Southern Plains live purchases traded at 137.00. In Nebraska live and dressed purchases traded from 144.00-145.00 and at 230.00, respectively. In the Western Cornbelt live and dressed purchases traded at 145.00 and from 228.00-230.00, respectively.

Negotiated Cash Sales:

Confirmed:	952	Week Ago:	3596	Year Ago:	3932
Week to date:	79,844	Week Ago:	67,530	Year Ago:	74,212

<u>Live Basis</u>	<u>Steers</u>	<u>Heifers</u>
Over 80% Choice	141.00-142.00, avg 141.46	-
65-80% Choice	-	-
35-65% Choice	-	-
0-35% Choice	-	-
Total All Grades	141.00-142.00, avg 141.46	-
<u>Dressed Basis</u>		
Over 80% Choice	229.00	-
65-80% Choice	230.00	230.00
35-65% Choice	-	-
0-35% Choice	-	-
Total All Grades	229.00-230.00, avg 229.56	230.00

WEEKLY COMMODITY FUTURES TRENDS

Compared to last week, Live Cattle 0.15 to 0.97 higher, Lean Hogs nearby 0.65 to 2.05 higher, others 1.12 to 1.70 lower, Feeder Cattle 3.77 to 4.95 higher.

Daily Futures Closes

	Mon.	Tues.	Wed.	Thu.	Fri.
Cattle					
Aug	136.15	136.67	136.87	135.40	134.92
Oct	140.42	141.27	141.27	139.92	139.55
Dec	146.50	147.20	147.65	146.30	145.42
Feb	151.40	151.87	152.25	151.12	150.42
Apr	154.57	154.82	155.12	154.22	153.57
Lean Hogs					
Jul	113.15	113.60	114.50	114.92	114.90
Aug	108.37	109.00	110.50	109.57	109.82
Oct	92.45	92.60	93.55	93.35	92.60
Dec	84.65	84.67	85.37	85.02	84.05
Feb	87.67	87.55	88.47	88.15	87.35
Fdr Cat					
Aug	174.87	179.57	180.80	178.90	176.35
Sep	177.40	181.52	183.07	181.62	179.67
Oct	179.87	183.45	185.00	183.82	182.45
Nov	182.02	185.20	186.42	185.20	184.22
Jan	182.52	185.67	186.72	185.37	184.52
Milk					
Jul	22.74	22.66	22.72	22.62	22.52
Aug	21.70	21.26	20.95	20.36	20.16
Sep	22.08	21.66	20.97	20.46	20.19

WEEKLY COMMODITY GRAIN FUTURES TRENDS

Compared to last week, Soybeans 0.47 to 0.55 lower, Wheat 0.96 to 1.15 lower, Corn 0.18 to 0.29 lower, KC Wheat 1.04 to 1.08 lower, Soybean Meal Aug 0.30 lower, others 8.10 to 12.10 lower.

Daily Grain Futures Closes

	Mon.	Tues.	Wed.	Thu.	Fri.
Soybeans					
Jul	1641	1592 3/4	1588 1/4	1610	1466
Aug	1522	1468 1/4	1484 3/4	1471 3/4	1359 1/2
Sep	1423 1/2	1362 1/2	1370 1/4	1359 3/4	1342 1/4
Nov	1405	1343	1349 1/2	1341	1348 3/4
Jan	1409 3/4	1348 1/2	1355	1347 1/4	1346
Wheat					
Jul	843 3/4	801 1/2	798 1/4	794 1/4	776 3/4
Sep	856 1/2	814 1/4	810 3/4	795	794
Dec	872 1/4	830 1/4	827 3/4	813 1/2	810 1/4
Mar	885 3/4	845	843 1/4	829 3/4	818 1/2
May	891 1/4	851 1/2	849 3/4	827 1/4	810
Corn					
Jul	781 1/4	732 3/4	740	695	604 1/4
Sep	637	594	600	605	603 3/4
Dec	629	586 1/2	595 1/4	601	610
Mar	633 1/2	593	602 1/4	608	613 1/4
May	635 1/4	596 3/4	605 3/4	611 3/4	611
KC Wheat					
Jul	920 1/4	872 3/4	867 1/4	867 1/4	837 1/2
Sep	915 1/4	867 3/4	862 1/4	848 3/4	845 1/4
Dec	923 1/4	875 3/4	870 1/4	856 3/4	851 1/4
Mar	927	880	875	861 3/4	853
May	927 1/4	881	875 1/2	862 3/4	842 3/4
SB Meal					
Jul	482.90	478.70	491.50	497.30	431.00
Aug	432.90	424.80	437.20	438.90	404.20
Sep	411.00	400.90	412.20	412.40	391.50
Oct	400.20	389.30	401.80	401.80	391.60
Dec	400.90	389.70	402.50	402.60	390.50

MISSOURI GRAIN WEEKLY TRENDS

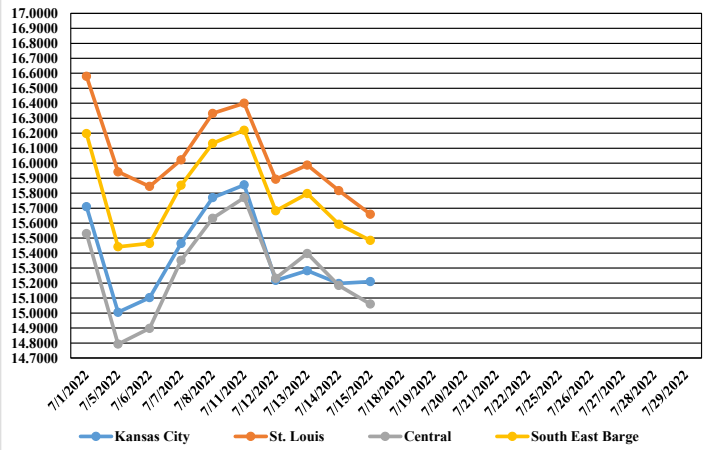
Compared to last week, Soybeans 0.44 to 0.67 lower, Wheat 0.82 to 1.05 lower, Corn 0.29 to 0.79 lower, Sorghum 0.19 to 0.29 lower.

Area	#1 Soybeans	#2 Soft Wheat	#2 Corn	#2 Grain Sorghum
Kansas City				
Friday**	15.63-15.83	8.92	7.48-7.83	6.14
Monday	15.72-15.90	8.57	7.52-7.87	6.19
Tuesday	15.03-15.28	8.14	7.09-7.44	5.77
Wednesday	15.10-15.35	8.11	7.15-7.50	5.85
Thursday	15.01-15.26	8.10	7.35-7.55	5.91
Friday	15.02-15.27	7.92	7.19-7.39	5.94
St. Louis				
Friday**	16.33	8.57-8.77	8.03	5.93
Monday	16.40	8.22-8.42	8.06	5.97
Tuesday	15.89	7.79-7.99	7.61	5.54
Wednesday	15.99	7.76-7.96	7.43	5.60
Thursday	15.82	7.80-7.90	7.37	5.65
Friday	15.66	7.62-7.85	7.24	5.64
Central				
Friday**	15.63	8.42-8.62	7.48	---
Monday	15.72-15.82	8.07-8.27	7.52	---
Tuesday	15.18-15.28	7.64-7.84	7.09	---
Wednesday	15.35-15.45	7.61-7.81	7.15	---
Thursday	15.12-15.22	7.45-7.65	7.20	---
Friday	14.96-15.16	7.27-7.47	7.19	---
S.E. MO				
Friday**	16.03-16.23	8.18-8.67	7.33-7.38	---
Monday	16.12-16.32	7.87-8.32	7.37-7.42	---
Tuesday	15.58-15.78	7.40-7.94	6.94-6.99	---
Wednesday	15.75-15.85	7.36-7.91	6.90-7.15	---
Thursday	15.47-15.72	7.21-7.75	6.95-7.11	---
Friday	15.41-15.56	7.02-7.57	6.84-6.99	---

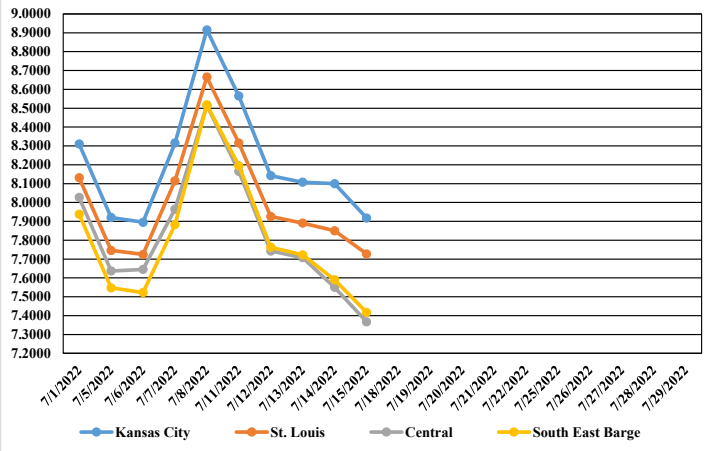
(PRICES PER BUSHEL) *NEW CROP **PREVIOUS WEEK'S PRICES
Most locations not providing cash wheat bids at this time, due to temporary transportation issues.

MONTHLY GRAIN CROP

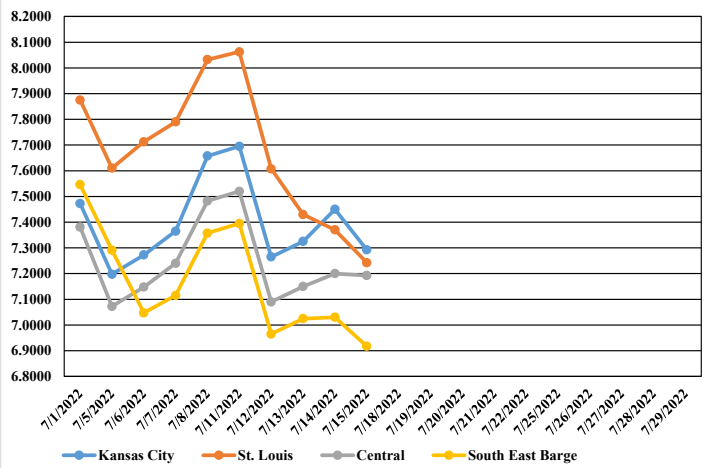
July 2022 Soybean Bids



July 2022 Wheat Bids



July 2022 Corn Bids



WHOLESALE FEEDSTUFFS PRICES 07/15/22
(DOLLARS PER TON-BULK BASIS)

Area	Soybean Hulls - Pellets	Cottonseed Meal 41%	Corn Gluten Pellets 21%	Wheat Middlings
Kansas City	165.00	420.00	260.00	192.50
St. Louis	n/a	415.00	255.00	195.00

WORLD AGRICULTURAL SUPPLY AND DEMAND EST

WHEAT: The outlook for 2022/23 U.S. wheat this month is for larger supplies, domestic use, exports, and ending stocks. Supplies are raised on increased production, which is up 44 million bushels to 1,781 million, on an increase in harvested area and higher yields. The first 2022 survey-based production forecast for other spring and Durum indicated a large increase from last year's drought-reduced output at 503 million and 77 million bushels, respectively. Winter wheat production is also forecast higher at 1,201 million bushels on an increase in harvested area. The 2022/23 export forecast is raised 25 million bushels to 800 million as the recent decline in U.S. prices makes exports more competitive in international markets. The projected season-average farm price (SAFP) is lowered \$0.25 per bushel to \$10.50 on declines in futures and cash prices.

COARSE GRAINS: This month's 2022/23 U.S. corn outlook is for larger supplies and higher ending stocks. Corn beginning stocks are raised 25 million bushels, based on reduced feed and residual use for 2021/22 as indicated in the June 30 Grain Stocks report. Corn production for 2022/23 is forecast 45 million bushels higher based on greater planted and harvested area from the June 30 Acreage report. The yield is unchanged at 177.0 bushels per acre. With no use changes, ending stocks are up 70 million bushels. The season-average farm price received by producers is lowered 10 cents to \$6.65 per bushel.

OILSEEDS: U.S. oilseed production for 2022/23 is projected at 132.7 million tons, down 3.9 million from last month with reductions for soybeans, canola, peanuts, and cottonseed partly offset by an increase for sunflowerseed. Soybean production is projected at 4.5 billion bushels, down 135 million on lower harvested area. Harvested area, forecast at 87.5 million acres in the June 30 Acreage report, is down 2.6 million from last month. The soybean yield forecast is unchanged at 51.5 bushels per acre. With lower production partly offset by higher beginning stocks, 2022/23 soybean supplies are reduced 125 million bushels. Soybean crush is reduced 10 million bushels reflecting a lower soybean meal export forecast. Soybean exports are reduced 65 million bushels to 2.14 billion on lower U.S. supplies, increased South American supplies, and lower global imports. With lower supplies only partly offset by reduced use, ending stocks for 2022/23 are projected at 230 million bushels, down 50 million from last month.

MISSOURI WEEKLY HAY SUMMARY 07/14/22

No surprise but the dry areas in the state are getting drier as another week passes with no significant rainfall. Once again this week, the total overall area of the state showing in the drought monitor remains about the same around 63 percent. The areas in that space however, nearly everything south of I-44, was upgraded to D1 or moderate drought status, with that pocket of D2 or severe drought remaining in the far south central region. For the most part, haying has wrapped up although many are really hoping for some relief and the opportunity to get a fall cutting. The hay market is a bit more active than what is typical for this time of year as a lot of producers were worried of being short come feeding season. The bad part is dryness is causing some to either already think of feeding something now or the more common solution is starting to cull cows and reducing herd size. Hay prices are steady. The supply of hay is moderate and there is currently hay that can be found to be bought without a lot of problem, although trucking cost can add up quickly. Hay demand and market activity is moderate. Missouri Department of Agriculture has a hay directory visit <http://mda.mo.gov/abd/haydirectory/> for listings of hay <http://agebb.missouri.edu/haylst/>

Alfalfa - Supreme 225.00-275.00, small square 8.00-12.00 per bale
Alfalfa - Premium 175.00-225.00
Alfalfa - Good 120.00-180.00, small square 5.00-9.00 per bale
Alfalfa - Fair 100.00-125.00
Alfalfa/grass mix - Good/Premium small square 6.00-8.00 per bale
Mixed grass - Good/Premium 80.00-140.00
Mixed grass - Fair/Good 60.00-100.00, small square 5.00-7.00 per bale
Mixed grass - Fair 35.00-60.00 per large round bale
Wheat straw - 4.00-7.00 per small square bale

Please Note: The above volumes (tonnage, acres, and bales) listed on this USDA LPGMN report are for confirmed trades only, it does not include estimated volume (tonnage) for bids or offers to the trade.

The current hay directory can be found at:
<https://apps.mda.mo.gov/HayDirectory>.

List your hay for sale at:
<https://agmarketnews.mo.gov/hay-directory/hay-listing-online-form#no-back>

Hay Quality Designation Guidelines:
<https://www.ams.usda.gov/market-news/livestock-poultry-and-grain-reference-room>

MISSOURI WEEKLY SHEEP/GOAT AUCTION SUMMARY

07/15/22

Receipts: 1040 Week Ago: 1023 Last Year: 749

All prices CWT unless otherwise noted.

SHEEP: Feeder lambs hair Medium 1 78 lbs fancy 180.00. Small and Medium 1-2 35-45 lbs 190.00-210.00; 50-60 lbs 175.00-195.00; 64-81 lbs 140.00-160.00. Small and Medium 2 35-50 lbs 152.50-165.00. Slaughter lambs woolled and shorn Choice and Prime 1-3 64-86 lbs 130.00-149.00. Choice 1-2 88 lbs 129.00. Choice and Prime 1-2 45-80 lbs 150.00-225.00; 90-115 lbs 125.00-145.00. hair Choice and Prime 1 50-65 lbs 215.00-240.00. Choice and Prime 1-2 45-80 lbs 175.00-215.00. Choice and Prime 1-3 55-83 lbs 130.00-150.00. Choice 1-2 65-80 lbs 114.00-125.00. Slaughter ewes Utility and Good 1-2 114-168 lbs 63.00-70.00. Utility and Good 2 75 lbs 135.00. Replacement ewes hair Small and Medium 1-2 less than 1 yr open 55-75 lbs 200.00-220.00.

GOATS: Feeder kids Selection 1 pkg 32 lbs 335.00. Selection 1-2 25-35 lbs 155.00-265.00. Slaughter kids Selection 1 40-50 lbs 260.00-285.00; 55-70 lbs 230.00-305.00. Selection 2 pkg 52 lbs 212.50. Selection 2-3 40-50 lbs 192.50-205.00. Nannies/ Does Selection 1-2 90-125 lbs 140.00-155.00. Bucks/Billies Selection 1-2 60-270 lbs 175.00-255.00. Replacement Nannies Selection 1-2 2-4 yrs exposed 70-140 lbs 200.00-240.00

Explanatory Notes: Stage - Represents estimated lambing/kidding period (Open, Exposed, Bred, Fall = Sep-Nov, Win = Dec-Feb, Spr = Mar-May, Sum=Jun-Aug)

NATIONAL DIRECT DELIVERED FEEDER PIG REPORT

07/15/22 Receipts: 75,813 Week ago: 55,605 Year Ago: 99,009
Early weaned pigs and all feeder pigs steady to 1.00 per head higher.

Early weaned pigs 10-12 lbs. basis: Formula 30,616 head 35.36-50.51, weighted average 41.86. Cash 33,528 head 31.00-45.00, weighted average 39.84
Feeder pigs 40 pounds basis: Cash 9,985 head 59.00-73.00, weighted average 68.06

NATIONAL DAILY DIRECT PRIOR DAY HOG REPORTS FOR 07/15/22

BARROWS AND GILTS (Carcass Basis): 7,970 head
Base Carcass Price, 112.00-127.00, weighted average 120.25

SOWS (Live Basis): 7,222 head
300-500 lbs. 34.00-75.00
Over 500 lbs. 49.66-79.00

MISSOURI WEEKLY DIRECT SLAUGHTER CATTLE REPORT 07/15/22

Weekly Receipts: 120 Week ago: 520 Year ago: 320
Trading as of Friday morning: light with flat dressed sales 2.00 lower and grid dressed sales inactive.

LIVE STEERS & HEIFERS: **DRESSED STEERS & HEIFERS:**
No Sales Reported 3 loads flat 230.00

GRADE AND WEIGHT (Grid): No sales reported

Click here for the current [National Crop Progress](#)

Click here for the current [Missouri Crop Progress](#)