

Weekly Market Summary

Published by:
Missouri Department of Agriculture
Ag Business Development Division
Market News Program



Chris Chinn, Director
 Jill Wood, Division Director
 Tony Hancock, Editor
<http://www.ams.usda.gov/marketnews.htm>
agmarketnews.mo.gov

Michael L. Parson, Governor

Volume XLII, Number 35 ♦ P.O. Box 630, Jefferson City, MO 65102 ♦ (573) 751-4211 ♦ Monday, September 05, 2022

MISSOURI WEEKLY FEEDER CATTLE WEIGHTED AVERAGE REPORT

Receipts: 17,505 Week ago: 19,199 Year ago: 18,807

Steers and Heifers Medium and Large 1—Weighted average weights and prices

STEERS: Medium and Large 1

290 lbs. 234.04	474 lbs. 216.29	678 lbs. 193.04	872 lbs. 184.73
323 lbs. 227.86	524 lbs. 210.61	716 lbs. 189.42	925 lbs. 165.50
375 lbs. 223.14	571 lbs. 204.81	770 lbs. 184.63	986 lbs. 162.25
421 lbs. 222.78	626 lbs. 203.64	827 lbs. 174.14	

HEIFERS: Medium and Large 1

288 lbs. 203.62	474 lbs. 187.71	677 lbs. 178.51	872 lbs. 141.10
331 lbs. 194.96	526 lbs. 181.78	714 lbs. 173.10	1017 lbs. 114.00
373 lbs. 197.00	581 lbs. 177.68	780 lbs. 168.30	
424 lbs. 192.53	629 lbs. 178.09	840 lbs. 167.03	

Missouri Steer (Heifer) Stocker Formula for 09/05/2022

Monday's Missouri Stocker Formula consists of **3337 (3569)** head with a weighted average weight of **546.77 (541.55)** lbs. and a price value of **201.53 (179.02)**, 3.16 lower (0.85 lower) than last Monday.

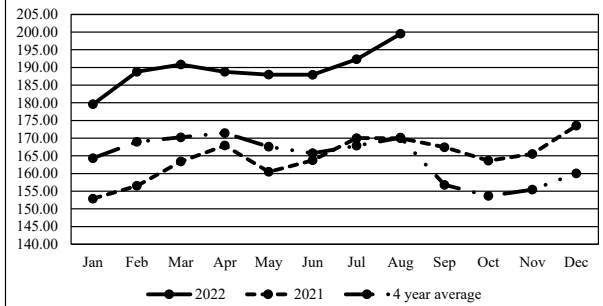
This a rolling seven day calculated weighted value which combines all Feeder Steers reported by MDA/USDA Market News Service weighing from 400-649 lbs. in the Medium and Large 1 and Medium and Large 1-2 frame and muscle classifications, including all comment cattle except Brahman X. Heifer values are in parentheses.

Missouri Weekly Cattle Auction Summary 09/05/22

Compared to last week, steers under 650 lbs. sold uneven from 5.00 lower to 5.00 higher, over 650 lbs. sold mostly steady. Heifers sold steady to weak. The supply of feeders was moderate to light. Demand best for those limited load lots of yearlings which make up less of the offering each week as the offering becomes increasingly more calves. Although still a few weeks away from the dreaded temperature swings that result in pens full of sick calves, buyers are already showing much less interest in unweaned, bawling, fleshy calves that come with extremely high health risk. Verified health programs with legitimate weaning and vaccinations programs are a must if producers wish to see upper ends of the market and this will only become more of a requirement until a hard frost comes, until then discounts are likely to grow each week. Boxed beef cutouts were steady to lower, which is typical now that summer is unofficially over and many grills get put away following Labor Day. Choice closed Friday at 259.42, down 3.93 and select at 238.59, exactly where it closed last Friday. Feedlot sales as of Friday afternoon totaled just over 70K head. The gap between the north and the south has nearly disappeared now. Live sales were reported from 141.00-144.00 and dressed sales from 228.00-232.00. The Missouri Stocker Formula consist of 3337 head with a weighted average weight of 546.77 lbs. and a price value of 201.53, 3.16 lower than last week. The steer/heifer spread is currently 22.51

The Weekly Market Summary, as well as historical summaries, are available on our website <https://agmarketnews.mo.gov/summaries>
 Market News Hotline: 1-573-522-9244

Missouri Stocker Formula - Steers

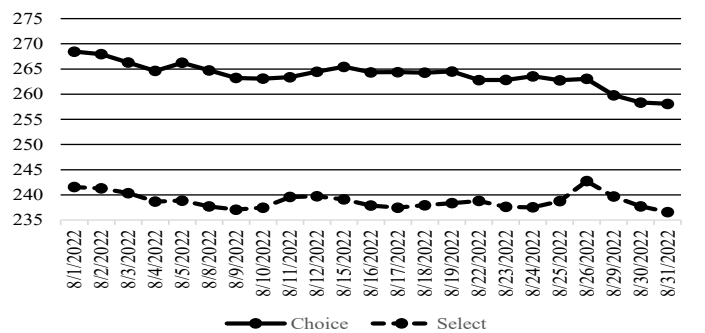


*Graph is updated the first Monday of each month.

NATIONAL BOXED BEEF CUTOUT/BOXED BEEF CUTS

DATE	CHOICE	SELECT	TOTAL LOADS
08/29	263.04	242.75	91
08/30	259.79	239.68	162
08/31	258.34	237.74	156
09/01	258.07	236.59	109
09/02	259.42	238.58	89
5 Day Simple Average	259.73	239.07	

Boxed Beef Cuts August 2022



WEEKLY LIVESTOCK SLAUGHTER 09/03/22

	CATTLE	HOGS	SHEEP
Week to Date:	638,000	2,350,000	32,000
Last Week:	678,000	2,405,000	32,000
Last Year:	621,000	2,385,000	36,000

SOUTHWEST MISSOURI WEEKLY SUMMARY

(Joplin and Springfield)

Receipts: 7089 Week ago: 7018 Year ago: 7061

Compared to last week, steers and heifers early week steady to 4.00 higher, spots 10.00 higher on steers less than 525 lbs, late week steers steady to weak and heifers unevenly steady from 2.00 lower to 3.00 higher. Slaughter cows steady. Slaughter bulls steady to 2.00 lower.

FEEDER STEERS:
Medium and Large 1

300-400 lbs.	206.00-247.50
400-500 lbs.	199.00-228.00
500-600 lbs.	193.50-218.00
600-700 lbs.	180.00-209.00
700-800 lbs.	174.00-196.00
800-900 lbs.	167.00-180.00
900-1000 lbs.	162.00-168.00

FEEDER HEIFERS:
Medium and Large 1

300-400 lbs.	181.00-208.00
400-500 lbs.	176.00-199.00
500-600 lbs.	167.00-188.00
600-700 lbs.	158.00-184.50
700-800 lbs.	151.50-176.00
Pkg 805 lbs.	162.00

FEEDER HOLSTEIN STEERS
Large 3

Scarce Scarce

SLAUGHTER COWS: Breaking and Boning (70-85% lean) 73.00-89.00, high dressing 84.00-95.00; low dressing 65.00-79.00. Lean (85-90%) 64.00-80.00

SLAUGHTER BULLS: Yield Grade 1-2 1210-2180 lbs. 97.00-113.00; high dressing 114.00-123.00; low dressing 84.00-101.00

BRED COWS: Medium and Large 1 2-8 yrs pkg 1156 lbs 2nd to 3rd stage 1600.00 per head. Medium and Large 1-2 2-8 yrs 930-1460 lbs 2nd to 3rd stage 900.00-1300.00, 1st stage 875.00-1010.00 per head

COW & CALF PAIRS: Scarce

BRED HEIFERS: Medium and Large 1 13 hd yearlings 930 lbs 2nd to 3rd stage 1550.00 per head. Medium and Large 1-2 yearlings 771-975 lbs 2nd to 3rd stage 950.00-1225.00 per head

SOUTH CENTRAL MISSOURI WEEKLY SUMMARY

(West Plains)

Receipts: 2383 Week ago: 3228 Year Ago: 3860

Compared to last week, steer and heifer calves under 600 lbs 4.00 to 8.00 higher, heavier weights steady to 4.00 higher. Slaughter cows 2.00 to 3.00 lower. Slaughter bulls steady.

FEEDER STEERS:
Medium and Large 1

300-400 lbs.	215.00-225.00
400-500 lbs.	205.00-227.00
500-600 lbs.	200.00-223.00
600-700 lbs.	184.00-204.00
700-800 lbs.	176.50-180.00

FEEDER HEIFERS:
Medium and Large 1

300-400 lbs.	187.00-192.00
400-500 lbs.	177.00-195.00
500-600 lbs.	172.50-184.00
600-700 lbs.	170.00-182.50
700-750 lbs.	167.00

FEEDER HOLSTEIN STEERS
Large 3

Scarce Scarce

SLAUGHTER COWS: Breaking and Boning (70-85% lean) 80.00-90.00, high dressing 90.00-98.00; low dressing 71.00-79.00. Lean (85-90%) 65.00-77.00

SLAUGHTER BULLS: Yield Grade 1-2 1290-2255 lbs. 100.00-114.00; high dressing 115.00-133.00; low dressing 80.00-98.00

BRED COWS: Medium and Large 1-2 2-8 yrs 1035-1480 lbs 2nd to 3rd stage 1150.00-1450.00; over 8 years 1129-1200 lbs 2nd to 3rd stage 1050.00 per head

COW & CALF PAIRS: Medium and Large 1-2 2-8 yrs few 1075-1319 lbs with 150-300 lb calves 1500.00-1650.00 per pair

WEST CENTRAL MISSOURI WEEKLY SUMMARY

(Kingsville, Windsor, Butler)

Receipts: 4390 Week ago: 3394 Year ago: 2989

Compared to last week, feeders sold mostly steady to firm. Slaughter cows sold steady to 3.00 lower.

FEEDER STEERS:
Medium and Large 1

350-400 lbs.	216.00-220.00
400-500 lbs.	209.00-228.00
500-600 lbs.	191.00-218.00
600-700 lbs.	186.00-217.00
700-800 lbs.	179.00-194.75
Pkg 823 lbs.	179.00

FEEDER HEIFERS:
Medium and Large 1

300-400 lbs.	200.00-215.00
400-500 lbs.	179.00-204.50
500-600 lbs.	172.75-190.00
600-700 lbs.	165.00-187.00
700-800 lbs.	163.00-180.00
800-900 lbs.	144.00-168.00

SLAUGHTER BULLS: Yield Grade 1-2 1155-1870 lbs 102.00-126.00; high dressing 119.00-127.00; low dressing 94.00-104.00

SLAUGHTER COWS: Breaking and Boning (70-85% lean) 74.00-94.50, high dressing 85.50-102.50. Lean (85-90%) 64.00-83.00

BRED COWS: Medium and Large 1-2 over 8 yrs 1070-1098 lbs 2nd to 3rd stage 84.00-86.00 CWT

COW & CALF PAIRS: Medium and Large 1-2 2-8 yrs 1100-1250 lbs with 150-300 lb calves 1300.00-1575.00 per pair

NORTHEAST MISSOURI WEEKLY SUMMARY

(Bowling Green, Kingdom City, Palmyra)

Receipts: 3331 Week ago: 4064 Year ago: 2636

Compared to last week, early week 600-650 lb. steers sold 3.00-6.00 lower, 400-550 lb. heifers sold 4.00-8.00 lower other weights steady to firm. Late week sales steady on a limited test. Slaughter cows sold mostly steady.

FEEDER STEERS:
Medium and Large 1

400-500 lbs.	213.00-234.00
500-600 lbs.	207.00-218.25
600-650 lbs.	199.00-203.00
700-750 lbs.	187.00-195.00

FEEDER HEIFERS:
Medium and Large 1

400-500 lbs.	190.50-200.00
500-600 lbs.	181.00-193.00
600-700 lbs.	171.50-185.00

SLAUGHTER BULLS: Yield Grade 1-2 1250-1970 lbs 102.00-115.00; high dressing 116.00-129.00; low dressing 88.00-100.00

SLAUGHTER COWS: Breaking and Boning, (70-85% lean) 83.00-92.50; high dressing 91.00-111.00; low dressing 73.00-83.50. Lean (85-90%) 73.50-85.00

SLAUGHTER STEERS: Choice and Prime 2-3 150.50-152.00. Choice 2-3 147.50-149.00. Select and Choice 2-3 144.00-147.00

BRED COWS: Medium and Large 1 2-4 yrs 1330-1400 lbs 3rd stage 1875.00-2000.00; 2-8 yrs 1223-1405 lbs 3rd stage 1675.00-1775.00 per pair

SLAUGHTER HEIFERS: Choice and Prime 2-3 152.00-154.00. Choice 1-3 146.50. Choice 2-3 148.00-151.50

COW & CALF PAIRS: 2-8 yrs 1200-1550 lbs with 150-300 lb calves 2000.00-2450.00; cows rebred with over 300 lb calves 2600.00-2700.00 per pair

NORTH CENTRAL MISSOURI WEEKLY SUMMARY

(Macon, Unionville, Green City, New Cambria)

Receipts: 2057 Week ago: 1422 Year ago: 0

Compared to the recent sales, steers and heifers firm to higher undertone. Slaughter cows steady to firm.

*Sale barns on a summer schedule and may not have a sale each week.

FEEDER STEERS:
Medium and Large 1

400-500 lbs.	215.50-219.00
500-600 lbs.	194.00-209.00
600-700 lbs.	186.75-205.00
Pkg 790 lbs.	184.00
850-900 lbs.	180.00-188.50

FEEDER HEIFERS:
Medium and Large 1

500-600 lbs.	176.50-188.50
600-700 lbs.	174.00-186.75
700-750 lbs.	173.75-180.25
21 hd 833 lbs.	166.00

SLAUGHTER BULLS: Yield Grade 1-2 1275-2275 lbs 100.00-114.00, high dressing 115.00-122.00

SLAUGHTER COWS: Breaking and Boning, (70-85% lean) 74.00-90.00; high dressing 84.00-98.50. Lean (85-90%) 64.00-84.00

BRED COWS: Scarce

COW & CALF PAIRS: Scarce

SOUTHEAST MISSOURI WEEKLY SUMMARY

(Jackson and Farmington)

Receipts: 1284 Week ago: 1451 Year ago: 1358
 Compared to last week, steers and heifers uneven from 5.00 lower to 10.00 higher. Slaughter cows and bulls steady to 3.00 higher.

FEEDER STEERS:
 Medium and Large 1

300-400 lbs.	201.00-213.00
400-500 lbs.	189.00-211.00
500-600 lbs.	186.00-194.00
600-700 lbs.	170.00-199.00
700-800 lbs.	159.00-176.00

FEEDER HEIFERS:
 Medium and Large 1

300-400 lbs.	160.00-183.00
400-500 lbs.	160.00-195.00
500-600 lbs.	156.00-177.00
600-700 lbs.	155.00-177.00
700-800 lbs.	141.00-172.00

SLAUGHTER BULLS: Yield Grade 1-2 1065-2420 lbs. 92.00-105.00, high dressing 107.00-120.00

SLAUGHTER COWS: Breaking and Boning (75-85% lean) 70.00-87.00; high dressing 84.00-92.00. Lean (85-90% lean) 55.00-66.00

BRED COWS: Medium and Large 2 2-8 yrs few 1005-1140 lbs 2nd stage 1025.00-1200.00; over 8 yrs 1230-1350 lbs 3rd stage 935.00-1150.00 per head

COW & CALF PAIRS: Medium and Large 2 2-8 yrs 1000-1200 lbs with 150-300 lb calves 1100.00-1600.00; 2-8 yrs 1000-1200 lbs with 150 lb to over 300 lb calves 1600.00-1800.00 per pair

EAST CENTRAL MISSOURI WEEKLY SUMMARY

(Cuba, Vienna)

Receipts: 1606 Week ago: 1632 Year ago: 2012
 Compared to last week, steers under 500 lbs steady to 5.00 higher, over 500 lbs steady to 4.00 lower. Heifers steady to 4.00 lower. Slaughter cows steady to 1.00 lower.

FEEDER STEERS:
 Medium and Large 1

300-400 lbs.	225.00-242.00
400-500 lbs.	205.00-237.00
500-600 lbs.	202.50-216.00
650-700 lbs.	187.00-197.50
Pkg 850 lbs.	175.00

FEEDER HEIFERS:
 Medium and Large 1

300-400 lbs.	204.00-216.00
400-500 lbs.	200.00-212.00
500-600 lbs.	171.00-208.00
600-700 lbs.	178.00-186.00
Pkg 738 lbs.	166.00
Pkg 887 lbs.	134.50
Lot 1017 lbs.	114.00

SLAUGHTER BULLS: Yield Grade 1-2 1240-2230 lbs 104.00-117.00; high dressing couple 119.00-122.00; low dressing 90.00-98.00

SLAUGHTER COWS: Breaking and Boning, (70-85% lean) 82.50-90.00; high dressing 88.50-93.50; low dressing few 77.50-80.50. Lean (85-90%) 71.00-81.50

BRED COWS: Medium and Large 1-2 2-8 yrs 1070-1285 lbs 2nd to 3rd stage 1110.00-1410.00 per head

COW & CALF PAIRS: Scarce

NORTHWEST MISSOURI WEEKLY SUMMARY

(Tina) (W/E 08/26/22)

Receipts: 2105 Two weeks ago: 1309
 Compared to two weeks ago, steers 6.00 to 8.00 higher, spots 12.00 to 14.00 higher. Heifers 8.00 to 10.00 higher. Slaughter cows 4.00 to 6.00 lower.

FEEDER STEERS:
 Medium and Large 1

400-500 lbs.	216.00-223.00
500-600 lbs.	207.00-219.00
600-700 lbs.	175.50-203.25
700-750 lbs.	171.00-187.25

FEEDER HEIFERS:
 Medium and Large 1

400-500 lbs.	184.00-191.00
500-600 lbs.	180.00-184.00
600-650 lbs.	171.00-179.50
700-800 lbs.	157.50-169.50

SLAUGHTER BULLS: Yield Grade 1-2 1285-2300 lbs 98.00-114.00; high dressing ind 125.00; low dressing ind 90.00

SLAUGHTER COWS: Breaking and Boning, (70-85% lean) 74.00-84.50; high dressing 82.50-99.50. Lean (85-90%) 61.00-70.00

BRED COWS: Medium and Large 1 2-8 yrs 1170-1415 lbs 2nd to 3rd stage 1825.00-2075.00. Medium and Large 1-2 2-8 yrs 1113-1520 lbs 2nd to 3rd stage 1525.00-1850.00 per head

COW & CALF PAIRS: Medium and Large 1 2-8 yrs 1000-1380 lbs with 150 lb to over 300 lb calves 1700.00-2050.00. Medium and Large 1-2 975-1300 lbs with baby to 300 lb calves 1525.00-1700.00 per pair

AFTERNOON NATIONAL SLAUGHTER CATTLE REVIEW 09/02/22

Thus far Friday trade was mostly inactive on light demand in all feeding regions. Not enough purchases in any region for a full market trend. The last reported market all regions was on Wednesday. In the Southern Plains live purchases traded at 141.00. In Nebraska live and dressed purchases traded at 143.00 and 228.00, respectively. In the Western Cornbelt live and dressed purchases traded from 143.00-144.00 and from 228.00-232.00, respectively.

Negotiated Cash Sales:					
Confirmed:	2,571	Week Ago:	2,220	Year Ago:	1,957
Week to date:	70,041	Week Ago:	66,088	Year Ago:	60,325

Live Basis	Steers	Heifers
Over 80% Choice	145.00	140.00
65-80% Choice	140.00	-
35-65% Choice	-	-
0-35% Choice	-	-
Total All Grades	140.00-145.00, avg 140.66	140.00
Dressed Basis		
Over 80% Choice	225.00	225.00
65-80% Choice	-	-
35-65% Choice	-	-
0-35% Choice	-	-
Total All Grades	225.00	225.00

WEEKLY COMMODITY FUTURES TRENDS

Compared to last week, :Live Cattle 0.30 to 1.50 higher, Lean Hogs Oct and Dec 0.25 to 0.63 lower, others 0.23 to 1.65 higher, Feeder Cattle 0.88 to 1.67 higher.

Daily Futures Closes

	Mon.	Tues.	Wed.	Thu.	Fri.
Cattle					
Aug	141.55	142.50	141.55	—	—
Oct	142.90	143.82	142.57	142.80	144.55
Dec	148.92	149.80	148.47	148.57	150.25
Feb	153.65	154.35	153.32	153.15	154.37
Apr	157.57	158.10	157.27	157.27	158.02
Lean Hogs					
Oct	92.25	93.60	91.52	91.95	90.02
Dec	84.60	85.50	83.87	83.77	82.70
Feb	87.92	88.62	87.80	87.55	86.70
Apr	91.52	92.25	97.87	91.67	91.15
May	95.22	95.95	95.90	95.87	95.57
Fdr Cat					
Sep	179.92	182.17	182.45	183.15	183.87
Oct	181.07	183.27	183.47	184.35	184.95
Nov	182.90	184.70	184.52	185.70	186.25
Jan	184.00	185.50	185.12	186.40	187.07
Mar	185.90	187.50	186.92	188.27	189.10
Milk					
Aug	20.13	20.12	—	—	—
Sep	19.89	19.79	19.63	19.59	19.75
Oct	20.41	20.10	19.89	19.52	19.94

WEEKLY COMMODITY GRAIN FUTURES TRENDS

Compared to last week, Soybeans 0.35 to 0.95 lower, Wheat 0.06 to 0.09 higher, Corn steady to 0.02 higher, KC Wheat 0.02 to 0.12 lower, Soybean Meal 10.10 to 34.00 lower.

Daily Grain Futures Closes

	Mon.	Tues.	Wed.	Thu.	Fri.
Soybeans					
Sep	1534 3/4	1513	1507 1/2	1472 3/4	1510 1/2
Nov	1437 3/4	1432 1/2	1422 1/2	1394 3/4	1420 1/2
Jan	1443	1437 1/2	1427 3/4	1399 3/4	1425 1/4
Mar	1444	1439 1/4	1430	1402 1/2	1428
May	1444 1/4	1440 1/2	1431 1/2	1404 1/2	1429 1/2
Wheat					
Sep	820	798 1/4	809	775 1/2	793
Dec	842 3/4	820 1/4	831 1/2	794 1/4	811
Mar	857 1/2	836 1/4	847 3/4	811 1/4	827 1/4
May	864 3/4	845	856 3/4	821	837 1/4
Jul	864 1/2	846 3/4	858 1/4	823	838 1/2
Corn					
Sep	683 3/4	679 3/4	673 3/4	658 1/4	669
Dec	683	677 1/4	670 1/2	658	665 3/4
Mar	687 3/4	683 1/4	676 1/2	663 3/4	671 1/4
May	688	684 1/2	678 1/4	666	672 1/2
Jul	683	679 3/4	674 1/4	661 1/2	667 1/4
KC Wheat					
Sep	912 1/2	908 3/4	924 1/4	863 1/2	871 1/2
Dec	912 1/2	897 3/4	912 1/2	868	877 3/4
Mar	912 1/4	898 1/2	911 1/4	867 1/2	879
May	911 1/2	898 1/4	910 3/4	866 1/2	879
Jul	900 1/2	888 1/4	900 3/4	856 1/2	868 3/4
SB Meal					
Sep	478.40	462.40	458.90	452.00	444.10
Oct	433.60	429.80	420.70	422.60	424.00
Dec	427.10	424.50	415.10	415.30	417.70
Jan	421.80	418.90	409.90	410.00	413.00
Mar	413.30	409.80	401.60	401.80	404.80

MISSOURI GRAIN WEEKLY TRENDS

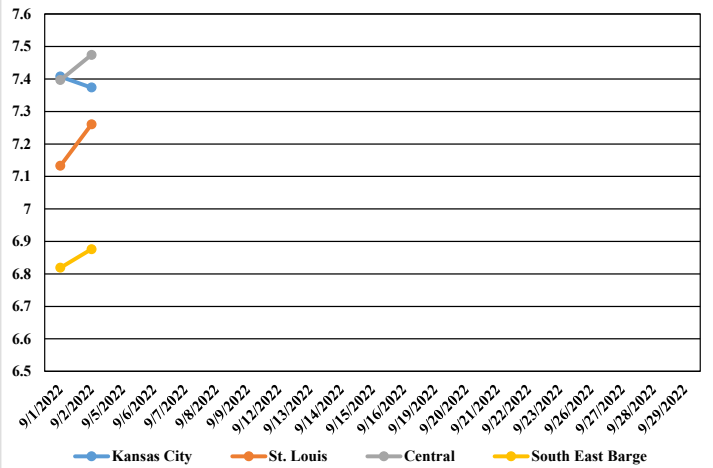
Compared to last week, Soybeans 1.09 lower to 1.29 higher, Wheat 0.12 lower to 0.21 higher, Corn steady to 0.58 lower, Sorghum steady to 0.22 higher.

Area	#1 Soybeans	#2 Soft Wheat	#2 Corn	#2 Grain Sorghum
Kansas City				
Friday**	14.46-16.11	8.10	7.39-7.44	6.99
Monday	14.23-15.88	8.45	7.59-7.74	7.18
Tuesday	14.18-15.83	8.23	7.55-7.70	7.12
Wednesday	14.07-15.72	8.16	7.48-7.63	7.05
Thursday	13.80-15.45	8.14	7.33-7.48	6.93
Friday	14.06-15.71	8.31	7.31-7.44	7.01
St. Louis				
Friday**	17.28	8.00-8.10	7.57	6.29-6.64
Monday	17.05	8.35-8.45	7.72	6.44-6.83
Tuesday	17.00	7.91-8.16	7.68	6.40-6.77
Wednesday	16.89	8.02-8.27	7.61	6.33-6.55
Thursday	15.78	7.69-7.81	7.13	6.63-6.78
Friday	16.19	7.86-8.16	7.26	6.29-6.86
Central				
Friday**	15.56-15.71	7.35-7.75	7.54-7.74	—
Monday	15.33-15.48	7.70-8.10	7.53-7.89	—
Tuesday	15.28-15.43	7.48-7.88	7.37-7.77	—
Wednesday	15.17-15.32	7.99	7.30-7.70	—
Thursday	14.90-15.05	7.62	7.08-7.58	—
Friday	15.16-15.31	7.79	7.16-7.66	—
S.E. MO				
Friday**	15.07-15.21	7.50-7.75	6.89-7.19	—
Monday	14.88-15.38	7.85-8.10	7.04-7.34	—
Tuesday	14.83-15.23	7.63-7.88	7.00-7.20	—
Wednesday	14.72-15.12	7.99	6.79-7.13	—
Thursday	14.45-14.85	7.66	6.63-6.98	—
Friday	14.81-15.11	7.83	6.75-6.99	—

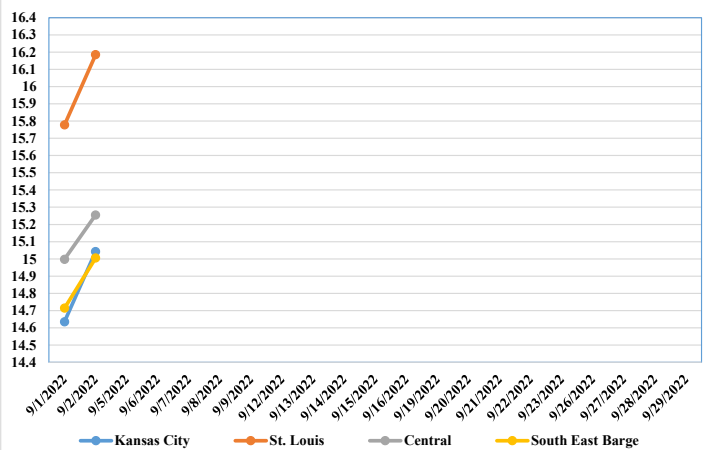
(PRICES PER BUSHEL) *NEW CROP **PREVIOUS WEEK'S PRICES
*Bids calculated using Kansas City, St. Louis, and St. Joseph bids

MONTHLY GRAIN CROP

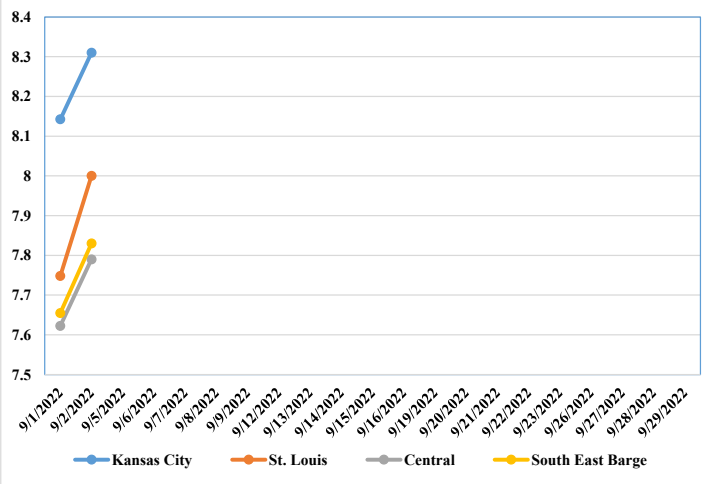
September 2022 Corn Bids



September 2022 Soybean Bids



September 2022 Wheat Bids



*Axis value ranges may be updated to reflect data points.

WHOLESALE FEEDSTUFFS PRICES 09/02/22 (DOLLARS PER TON-BULK BASIS)

Area	Soybean Hulls - Pellets	Cottonseed Meal 41%	Corn Gluten Pellets 21%	Wheat Middlings
Kansas City	215.00	n/a	285.00	272.50
St. Louis	n/a	n/a	290.00	251.50

GRAIN CRUSHINGS AND CO-PRODUCTS PRODUCTION

Total corn consumed for alcohol and other uses was 500 million bushels in July 2022. Total corn consumption was up 1 percent from June 2022 but down 1 percent from July 2021. July 2022 usage included 91.3 percent for alcohol and 8.7 percent for other purposes. Corn consumed for beverage alcohol totaled 3.40 million bushels, down 7 percent from June 2022 and down 7 percent from July 2021. Corn for fuel alcohol, at 446 million bushels, was up less than 1 percent from June 2022 but down 1 percent from July 2021. Corn consumed in July 2022 for dry milling fuel production and wet milling fuel production was 92.8 percent and 7.2 percent, respectively.

Dry mill co-product production of distillers dried grains with solubles (DDGS) was 1.93 million tons during July 2022, up 1 percent from June 2022 but down 2 percent from July 2021. Distillers wet grains (DWG) 65 percent or more moisture was 1.28 million tons in July 2022, down less than 1 percent from June 2022 but up 14 percent from July 2021.

Wet mill corn gluten feed production was 271,334 tons during July 2022, down 6 percent from June 2022 and down 11 percent from July 2021. Wet corn gluten feed 40 to 60 percent moisture was 221,764 tons in July 2022, up 9 percent from June 2022 and up 6 percent from July 2021.

AGRICULTURAL PRICES

July Prices Received Index Down 0.1 Percent. The July Prices Received Index 2011 Base (Agricultural Production), at 134.7, decreased 0.1 percent from June but increased 26 percent from July 2021. At 124.2, the Crop Production Index was down 1.2 percent from last month but up 16 percent from the previous year. The Livestock Production Index, at 148.1 increased 2.2 percent from June and 38 percent from July last year. Producers received lower prices during July for broilers, soybeans, wheat, and corn but higher prices for market eggs, hay, hogs, and cattle. In addition to prices, the volume change of commodities marketed also influences the indexes. In July, there was decreased monthly movement for milk, cattle, oranges, and broilers and increased marketing of wheat, grapes, hay, and cotton.

July Prices Paid Index Up 0.5 Percent. The July Prices Paid Index for Commodities and Services, Interest, Taxes, and Farm Wage Rates (PPITW), at 135.6, is up 0.5 percent from June 2022 and 13 percent from July 2021. Higher prices in July for hay & forages, feeder cattle, other services, and herbicides more than offset lower prices for nitrogen, diesel, mixed fertilizer, and feed grains.

Index Group	July 2021	June 2022	July 2022
Prices received by farmers	107%	134.9%	134.7%
Prices paid by farmers	120.4%	134.9%	135.6%
Ratio of prices received to prices paid	89%	100%	99%

MISSOURI WEEKLY HAY SUMMARY 09/01/22

Despite the fact drought conditions have slowly been improving over the last three or four weeks and many areas are seeing green growing pastures. Over all, state wide pasture conditions actually declined pretty significantly over the last week. As of the latest report, 36 percent of pastures are rated very poor to poor, 32 percent fair and 32 percent good to excellent. Although fall haying accounts for a very small portion of the states' annual hay harvest, many farmers are hoping for significant fall growth in order to add some bales to the short inventory. However, if these hopes will turn in to reality is still a big question in many areas at the current time. Hay supplies are light to moderate. Hay movement is moderate, demand is moderate to good and prices are steady to firm. Missouri Department of Agriculture has a hay directory visit <http://mda.mo.gov/abd/haydirectory/>. For listings of hay: <http://agebb.missouri.edu/haylst/>

Alfalfa - Supreme 250.00-300.00, small square 10.00-15.00 per bale

Alfalfa - Premium 180.00-250.00

Alfalfa - Good 150.00-180.00, small square 5.00-9.00 per bale

Alfalfa - Fair 125.00-150.00

Alfalfa/grass mix - Good/Premium small square 5.00-9.00 per bale

Mixed grass - Good/Premium 125.00-175.00

Mixed grass - Fair/Good 100.00-150.00, small square 5.00-8.00 per bale

Mixed grass - Fair 50.00-85.00 per large round bale

Wheat straw - 4.00-7.00 per small square bale

Please Note: The above volumes (tonnage, acres, and bales) listed on this USDA LPGMN report are for confirmed trades only, it does not include estimated volume (tonnage) for bids or offers to the trade.

The current hay directory can be found at:

<https://apps.mda.mo.gov/HayDirectory>.

List your hay for sale at:

<https://agmarketnews.mo.gov/hay-directory/hay-listing-online-form#no-back>

MISSOURI WEEKLY SHEEP/GOAT AUCTION SUMMARY

Receipts: 1140 Week Ago: 1820 Last Year: 1265

All prices CWT unless otherwise noted.

SHEEP: Feeder Lambs: Hair Small and Medium 1-2 30-40 lbs 300.00-365.00; 40-50 lbs 255.00-337.50. Slaughter lambs woolled and shorn Choice and Prime 1-3 pkg 82 lbs 170.00. Choice 1-3 70-80 lbs 150.00. Good 1-2 135-140 lbs 100.00. hair Choice and Prime 1-3 45-60 lbs 272.50-320.00; 60-70 lbs 245.00-295.00; 70-80 lbs 220.00-240.00. Choice 1-3 60-70 lbs 200.00-250.00; 70-90 lbs 145.00-220.00. Good 1-2 60-70 lbs 152.50-165.00; pkg 77 lbs 115.00; 90-100 lbs 100.00-132.50. Slaughter ewes Good 2-3 80-110 lbs 125.00-175.00. Utility and Good 1-3 75-140 lbs 100.00-140.00. Cull and Utility 1-2 few 90-100 lbs 82.50-100.00; pkg 105 lbs 60.00. Replacement ewes hair Small and Medium 1-2 yearlings 25-45 lbs open 345.00-400.00; 60-75 lbs open 210.00-290.00; 2-4 yrs 85-120 lbs 185.00-205.00.

GOATS: Feeder kids Selection 1 30-40 lbs 350.00-435.00, replacements 405.00-510.00; 40-50 lbs 320.00-380.00. Selection 2 20-30 lbs 250.00-255.00; 30-40 lbs 215.00-295.00; 40-50 lbs 265.00-305.00. Selection 3 30-45 lbs 125.00-170.00, pygmies 150.00-170.00. Wether kids Selection 1 lot 42 lbs 355.00. Slaughter kids Selection 1 50-60 lbs 300.00-345.00. Selection 2 55-65 lbs 250.00-275.00. Selection 3 40-65 lbs 155.00-165.00. Slaughter nannies/does Selection 1-2 55-65 lbs 175.00-205.00; 60-75 lbs pygmies 170.00-187.50; 80-90 lbs 140.00-175.00; 90-125 lbs 110.00-165.00. Slaughter bucks/billies Selection 1-2 pkg 62 lbs 250.00; 40-85 lbs pygmies 130.00-200.00; 90-180 lbs 160.00-225.00. Wethers Selection 1-2 70-145 lbs 250.00-330.00. Wether kids Selection 2 75-85 lbs 265.00-272.50. Replacement nannies/does Selection 1-2 yearlings 65-75 lbs open 320.00-380.00; 1-2 yrs pkg 58 lbs exposed 205.00; 2-4 yrs 100-135 lbs exposed 165.00-365.00.

Explanatory Notes: Stage - Represents estimated lambing/kidding period (Open, Exposed, Bred, Fall = Sep-Nov, Win = Dec-Feb, Spr = Mar-May, Sum=Jun-Aug)

NATIONAL DIRECT DELIVERED FEEDER PIG REPORT

09/02/22 Receipts: 102,482 Week ago: 57,922 Year Ago: 134,236 Early weaned pigs 1.00 per head lower. All feeder pigs 2.00 per head lower.

Early weaned pigs 10-12 lbs. basis: Formula 41,182 head 35.50-55.34, weighted average 43.67. Cash 52,816 head 20.00-46.50, weighted average 39.75

Feeder pigs 40 pounds basis: Cash 8,484 head 49.00-70.00, weighted average 61.89

NATIONAL DAILY DIRECT PRIOR DAY HOG REPORTS FOR 09/02/22

BARROWS AND GILTS (Carcass Basis): 4,994 head
Base Carcass Price, 94.00-125.00, weighted average 99.67

SOWS (Live Basis): 6,965 head
300-500 lbs. 36.00-87.00
Over 500 lbs. 57.57-88.003

MISSOURI WEEKLY DIRECT SLAUGHTER CATTLE REPORT 09/02/22

Weekly Receipts: 360 Week ago: 320 Year ago: 360
Trading as of Friday morning: light to moderate with flat dressed sales mostly 4.00 lower and grid dressed sales inactive.

LIVE STEERS & HEIFERS: No sales reported
DRESSED STEERS & HEIFERS: 5 loads flat Tue 229.00

GRADE AND WEIGHT (Grid): no sales reported

Click here for the current [National Crop Progress](#)

Click here for the current [Missouri Crop Progress](#)