

# Weekly Market Summary

Published by:  
**Missouri Department of Agriculture**  
**Ag Business Development Division**  
**Market News Program**



Chris Chinn, Director  
 Jill Wood, Division Director  
 Tony Hancock, Editor  
<http://www.ams.usda.gov/marketnews.htm>  
<http://www.ams.usda.gov/marketnews.htm>

Michael L. Parson, Governor

Volume XLII, Number 38 ♦ P.O. Box 630, Jefferson City, MO 65102 ♦ (573) 751-4211 ♦ Monday, September 26, 2022

## MISSOURI WEEKLY FEEDER CATTLE WEIGHTED AVERAGE REPORT

Receipts: 17,640 Week ago: 27,729 Year ago: 18,816

Steers and Heifers Medium and Large 1—Weighted average weights and prices

### STEERS: Medium and Large 1

264 lbs. 226.12	476 lbs. 209.04	678 lbs. 185.00	885 lbs. 168.53
323 lbs. 215.05	528 lbs. 200.24	720 lbs. 182.84	921 lbs. 168.35
379 lbs. 209.58	577 lbs. 199.51	769 lbs. 177.01	1105 lbs. 150.75
416 lbs. 214.77	620 lbs. 194.60	824 lbs. 175.52	

### HEIFERS: Medium and Large 1

317 lbs. 201.28	530 lbs. 177.52	722 lbs. 170.46	969 lbs. 152.72
364 lbs. 186.98	579 lbs. 174.20	774 lbs. 153.96	
419 lbs. 176.15	622 lbs. 171.53	822 lbs. 161.59	
472 lbs. 175.22	672 lbs. 177.68	876 lbs. 162.90	

### Missouri Steer (Heifer) Stocker Formula for 09/26/2022

Monday's Missouri Stocker Formula consists of **3183 (3277)** head with a weighted average weight of **538.18 (534.51)** lbs. and a price value of **193.30 (170.06)**, 6.16 lower (6.03 lower) than last Monday.

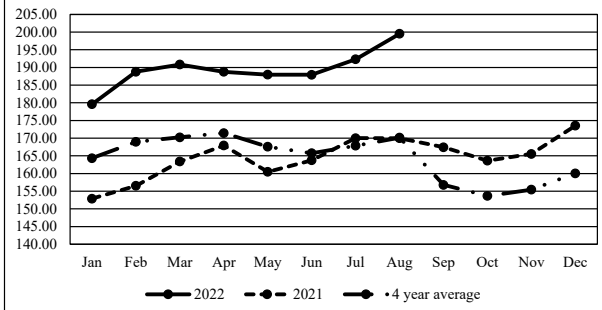
This a rolling seven day calculated weighted value which combines all Feeder Steers reported by MDA/USDA Market News Service weighing from 400-649 lbs. in the Medium and Large 1 and Medium and Large 1-2 frame and muscle classifications, including all comment cattle except Brahman X. Heifer values are in parentheses.

### Missouri Weekly Cattle Auction Summary 09/26/22

Compared to last week, steers and heifers traded uneven with the bulk mostly steady to 5.00 lower, but more attractive, weaned, hard calves and yearlings traded steady to 3.00 higher. Demand was moderate. As a whole, the feeder supply was moderate, but depending on the part of the state, there was a variety of quantity and quality. Record high temperatures early week were seen, then a light jacket was needed late week after the abrupt cold front arrived. The calf market continues to see pressure from seasonal weather swings. Seasonal price spreads were apparent as buyers discount calves depending on weaning status, flesh, and vaccination status. September's cattle on feed report was released on Friday. Cattle and calves on feed was reported at 11.3 million head on September 1, slightly above a year ago and the second highest September 1 inventory since the series began in 1996. Placements in feedlots in August was reported at 2.11 million head, slightly above a year ago. Marketings of fed cattle for August totaled 2 million head, six percent above a year ago. Boxed beef closed on Friday at 248.63 and 219.31, for choice and select, respectively. This was 3.77 lower and 7.34 lower than a week ago for choice and select, respectively. As of Friday afternoon's report, negotiated feedlot volume was reported at 110,427 head, with live sales at 143.00 to 152.00, and dressed from 226.00 to 228.50. The Missouri Stocker Formula consists of 3183 head with a weighted average weight of 538.18 lbs and a price value of 193.30, 6.16 lower than a week ago.

The Weekly Market Summary, as well as historical summaries, are available on our website <https://agmarketnews.mo.gov/summaries>  
 Market News Hotline: 1-573-522-9244

### Missouri Stocker Formula - Steers

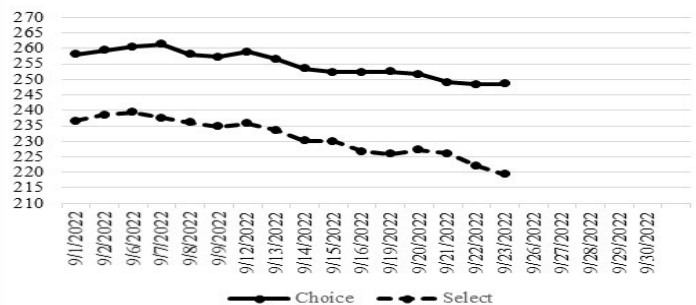


\*Graph is updated the first Monday of each month.

### NATIONAL BOXED BEEF CUTOFF/BOXED BEEF CUTS

DATE	CHOICE	SELECT	TOTAL LOADS
09/19	252.45	225.89	137
09/20	251.64	227.23	145
09/21	249.13	226.14	197
09/22	248.40	222.11	186
09/23	248.63	219.31	100
5 Day Simple Average	250.05	244.14	

### Boxed Beef Cuts September 2022



\*Axis value ranges may be updated to reflect data points.

### WEEKLY LIVESTOCK SLAUGHTER 09/24/22

	CATTLE	HOGS	SHEEP
Week to Date:	667,000	2,538,000	33,000
Last Week:	667,000	2,465,000	34,000
Last Year:	643,000	2,583,000	35,000

**SOUTHWEST MISSOURI WEEKLY SUMMARY**

(Joplin and Springfield)

Receipts: 7942 Week ago: 11,725 Year ago: 6804

Compared to last week, steers steady to 5.00 higher, spots 10.00 higher. Heifers early week under 500 lb 2.00 to 6.00 lower, over 500 lbs steady; late week heifers steady to 6.00 higher. Slaughter cows and bulls 2.00 to 5.00 lower.

**FEEDER STEERS:**  
Medium and Large 1

300-400 lbs.	217.00-220.00
400-500 lbs.	198.00-222.00
500-600 lbs.	191.00-211.00
600-700 lbs.	184.00-210.75
700-800 lbs.	167.00-189.00
800-900 lbs.	158.75-177.75

**FEEDER HEIFERS:**  
Medium and Large 1

300-400 lbs.	186.00-205.00
400-500 lbs.	167.00-183.50
500-600 lbs.	167.00-185.50
600-700 lbs.	160.00-175.50
700-800 lbs.	149.50-173.50
800-850 lbs.	147.00-164.60

**FEEDER HOLSTEIN STEERS**  
Large 3

Pkg 601 lbs. 122.00

**SLAUGHTER COWS:** Breaking and Boning (70-85% lean) 68.00-83.00, high dressing 76.00-89.50; low dressing 58.00-73.00. Lean (85-90%) 60.00-73.00

**SLAUGHTER BULLS:** Yield Grade 1-2 1215-2240 lbs. 95.50-114.00; high dressing 112.00-122.00; low dressing 79.00-96.50

**BRED COWS:** Medium and Large 1 2-8 yrs 1100-1200 lbs 1st stage 1250.00. Medium and Large 1-2 2-8 yrs 840-1365 lbs 2nd to 3rd stage 900.00-1375.00, 1st stage 875.00-1200.00; over 8 yrs 985-1265 lbs 2nd to 3rd stage 700.00-1150.00 per head

**COW & CALF PAIRS:** Medium and Large 1 2-8 yrs 1150-1295 lbs with 150-300 lb calves 1450.00-1460.00. Medium and Large 1-2 2-8 yrs 1085-1450 lbs with baby to 300 lb calves 1200.00-1450.00; over 8 yrs 1050-1280 lbs with 150-300 lb calves 925.00-1275.00 per pair

**SOUTH CENTRAL MISSOURI WEEKLY SUMMARY**

(West Plains)

Receipts: 2462 Week ago: 3747 Year Ago: 4215

Compared to last week, steer and heifer calves steady to 4.00 lower and a comparable package of 800 lbs yearling steers 3.00 higher. Slaughter cows and bulls 2.00 to 3.00 lower.

**FEEDER STEERS:**  
Medium and Large 1

300-400 lbs.	202.50-217.50
400-500 lbs.	199.00-216.00
500-600 lbs.	188.00-202.00
600-650 lbs.	185.00-197.00
62 hd 842 lbs.	173.25

**FEEDER HEIFERS:**  
Medium and Large 1

300-400 lbs.	175.00-200.00
400-450 lbs.	175.00-177.50
500-600 lbs.	167.00-178.00
600-650 lbs.	162.00-162.50

**FEEDER HOLSTEIN STEERS**  
Large 3

Scarce Scarce

**SLAUGHTER COWS:** Breaking and Boning (70-85% lean) 75.00-85.00, high dressing 84.00-94.00; low dressing 72.50-75.00. Lean (85-90%) 63.00-75.00

**SLAUGHTER BULLS:** Yield Grade 1-2 1180-2185 lbs. 95.00-108.00; high dressing 109.00-120.00; low dressing 75.00-94.00

**BRED COWS:** Medium and Large 1-2 2-8 yrs 1002-1395 lbs 2nd to 3rd stage 1150.00-1375.00, 1st stage 1000.00 per head

**COW & CALF PAIRS:** Medium and Large 1-2 2-8 yrs pkg 970 lbs with 150-300 lb calves 1575.00 per pair

**BRED HEIFERS:** Medium and Large 1-2 pkg 820 lbs 1st to 3rd stage 900.00 per head

**WEST CENTRAL MISSOURI WEEKLY SUMMARY**

(Kingsville, Windsor, Butler)

Receipts: 3616 Week ago: 5227 Year ago: 3476

Compared to last week, steers and heifers steady to 8.00 lower. Slaughter cows 2.00 to 5.00 lower.

**FEEDER STEERS:**  
Medium and Large 1

300-400 lbs.	205.00-227.50
400-500 lbs.	210.00-225.00
500-600 lbs.	188.00-214.00
600-700 lbs.	177.00-204.00
700-800 lbs.	171.50-184.50
800-900 lbs.	171.50-176.50

**FEEDER HEIFERS:**  
Medium and Large 1

300-400 lbs.	198.00-206.00
400-500 lbs.	185.00-200.50
500-600 lbs.	160.00-194.00
600-700 lbs.	167.00-186.50
700-800 lbs.	162.00-177.50
800-900 lbs.	146.00-160.35

**SLAUGHTER BULLS:** Yield Grade 1-2 1135-2340 lbs 100.00-115.00; high dressing 114.00-123.50; low dressing 89.00-99.50

**SLAUGHTER COWS:** Breaking and Boning (70-85% lean) 69.00-86.50, high dressing 78.50-92.50. Lean (85-90%) 64.50-76.00

**BRED COWS:** Scarce

**COW & CALF PAIRS:** Scarce

**NORTHEAST MISSOURI WEEKLY SUMMARY**

(Bowling Green, Kingdom City, Palmyra)

Receipts: 3002 Week ago: 5070 Year ago: 3126

Compared to last week, steers and heifers under 600 lbs steady to firm, steers over 600 lbs not well tested. Heifers over 600 lbs uneven with a pot load 685 lbs 5.00 lower than last week's pot loads of similar weight and quality, four pot loads of yearling heifers firm to higher undertone. Slaughter cows 2.00 to 4.00 lower.

**FEEDER STEERS:**  
Medium and Large 1

400-500 lbs.	215.00-237.00
500-600 lbs.	207.50-222.50
600-700 lbs.	190.50-215.50
700-750 lbs.	192.00-194.75
57 hd 921 lbs.	168.35

**FEEDER HEIFERS:**  
Medium and Large 1

400-500 lbs.	191.00-207.00
500-600 lbs.	184.00-196.00
600-700 lbs.	178.00-188.00
16 hd 717 lbs.	166.50
700-800 lbs.	160.50-166.50
800-900 lbs.	148.75-154.25

**SLAUGHTER BULLS:** Yield Grade 1-2 1300-2305 lbs 103.00-123.00; high dressing 115.00-125.00; low dressing 90.00-109.00

**SLAUGHTER COWS:** Breaking and Boning, (70-85% lean) 77.00-92.50; high dressing 85.00-97.50; low dressing 66.00-83.50. Lean (85-90%) 69.00-83.00

**SLAUGHTER STEERS:** Choice 2-3 143.00-146.50. Select and Choice 2-3 137.00-142.00. Select 1-2 130.00-135.50. Select 2-3 118.00-132.00

**BRED COWS:** Scarce

**SLAUGHTER HEIFERS:** Choice 2-3 142.50-145.50. Select and Choice 1-3 139.00-140.00.

**COW & CALF PAIRS:** Scarce

**NORTH CENTRAL MISSOURI WEEKLY SUMMARY**

(Macon, Unionville, Green City, New Cambria)

Receipts: 5890 Week ago: 2057 Year ago: 3930

Compared to the recent sales, steers and heifers mostly steady to 4.00 lower. Slaughter cows steady to 2.00 lower.

\*Sale barns on a summer schedule and may not have a sale each week.

**FEEDER STEERS:**  
Medium and Large 1

15 hd 487 lbs.	212.00
500-600 lbs.	198.00-200.25
600-700 lbs.	182.00-199.00
700-800 lbs.	181.50-189.00
58 hd 878 lbs.	175.00

**FEEDER HEIFERS:**  
Medium and Large 1

Pkg 571 lbs.	178.50
600-700 lbs.	176.50-185.50
Pkg 745 lbs.	163.50

**SLAUGHTER BULLS:** Yield Grade 1-2 1450-1990 lbs 93.00-111.50; low dressing few 89.50-91.50

**SLAUGHTER COWS:** Breaking and Boning, (70-85% lean) 70.00-87.00; high dressing 88.50-89.00. Lean (85-90%) 65.00-79.00

**BRED COWS:** Medium and Large 1-2 2-4 yrs 17 hd 1250 lbs 3rd stage 1825.00 per head

**COW & CALF PAIRS:** Scarce

**SOUTHEAST MISSOURI WEEKLY SUMMARY**

(Jackson and Farmington)

Receipts: 1712 Week ago: 2187 Year ago: 1689  
 Compared to last week, steers and heifers very uneven from 10.00 lower to 9.00 higher. Slaughter cows and bulls 1.00 to 2.00 lower.

**FEEDER STEERS:**  
 Medium and Large 1

**FEEDER HEIFERS:**  
 Medium and Large 1

300-400 lbs.	170.00-217.00	300-400 lbs.	155.00-177.00
400-500 lbs.	175.00-200.00	400-500 lbs.	150.00-179.00
500-600 lbs.	170.00-197.00	500-600 lbs.	145.00-180.00
600-700 lbs.	162.00-191.00	600-700 lbs.	140.00-167.00
700-800 lbs.	155.00-182.00	700-800 lbs.	140.00-159.00

**SLAUGHTER BULLS:** Yield Grade 1-2 1072-2100 lbs. 85.00-105.00, high dressing 107.00-122.00

**SLAUGHTER COWS:** Breaking and Boning (75-85% lean) 68.00-82.00; high dressing 82.00-89.00. Lean (85-90% lean) 54.50-65.00

**BRED COWS:** Medium and Large 2 2-8 yrs 1054-1332 lbs 1st to 3rd stage 850.00-1250.00 per head

**COW & CALF PAIRS:** Medium and Large 2 2-8 yrs few 1000-1100 lbs with 150-300 lbs calves 1100.00-1150.00 per pair

**EAST CENTRAL MISSOURI WEEKLY SUMMARY**

(Cuba, Vienna)

Receipts: 1594 Week ago: 4284 Year ago: 1723  
 Compared to last week, steers and heifers steady to 10.00 lower. Slaughter cows steady to 3.00 lower.

**FEEDER STEERS:**  
 Medium and Large 1

**FEEDER HEIFERS:**  
 Medium and Large 1

400-500 lbs.	200.00-231.50	450-500 lbs.	181.00-199.00
500-600 lbs.	187.00-202.75	500-600 lbs.	182.00-189.00
600-650 lbs.	194.00-198.00	600-700 lbs.	165.00-174.00
700-800 lbs.	169.50-185.00	Pkg 726 lbs.	161.00
Pkg 843 lbs.	168.00	800-900 lbs.	146.00-154.00

**SLAUGHTER BULLS:** Yield Grade 1-2 1420-1965 lbs 97.50-109.50; high dressing few 118.00-121.00; low dressing few 85.00-94.00

**SLAUGHTER COWS:** Breaking and Boning, (70-85% lean) 77.50-85.00; high dressing 86.00-90.00. Lean (85-90%) 70.00-78.00

**BRED COWS:** Medium and Large 1-2 5-8 yrs 1115-1500 lbs 2nd to 3rd stage 1100.00-1500.00 per head

**COW & CALF PAIRS:** Medium and Large 1-2 2-8 yrs 900-1200 lbs few rebred 1st stage with baby to 300 lb calves 1525.00-1975.00 per pair

**NORTHWEST MISSOURI WEEKLY SUMMARY**

(Tina) (w/e 9/16/22)

Receipts: 1660 Three weeks ago: 1303  
 Compared to three weeks ago, steers steady to 6.00 lower and heifers unevenly steady. Slaughter cows 2.00 to 4.00 higher.

**FEEDER STEERS:**  
 Medium and Large 1

**FEEDER HEIFERS:**  
 Medium and Large 1

400-500 lbs.	207.00-217.50	400-500 lbs.	181.00-195.00
500-600 lbs.	195.00-210.50	500-600 lbs.	175.00-187.50
600-700 lbs.	191.00-205.00	600-650 lbs.	170.00-179.00
750-800 lbs.	180.50-187.00	700-750 lbs.	170.50-176.00
800-850 lbs.	173.00-178.75	19 hd 802 lbs.	164.50
27 hd 979 lbs.	161.10	Pkg 895 lbs.	142.00

**SLAUGHTER BULLS:** Yield Grade 1-2 1165-2165 lbs 92.50-114.50; couple low dressing 88.50-89.50

**SLAUGHTER COWS:** Breaking and Boning, (70-85% lean) 73.50-85.50; high dressing 82.50-94.00. Lean (85-90%) 60.00-74.00

**BRED COWS:** Scarce

**COW & CALF PAIRS:** Scarce

**AFTERNOON NATIONAL SLAUGHTER CATTLE REVIEW 09/23/22**

So far for Friday in the Western Cornbelt negotiated cash trading has been slow on light to moderate demand. Compared to the last reported market on Thursday live purchases traded steady to 4.00 higher at 148.00. Not enough dressed purchases for a market trend. Thursday saw dressed purchases from 228.00-234.00. In Nebraska negotiated cash trading has been limited on light demand. A few live purchases traded steady at 144.00 when compared to the last reported market on Thursday. Not enough dressed purchases for a market trend. Thursday saw dressed purchases from 228.00-232.00. In the Southern Plains negotiated cash trading has been mostly inactive on light demand. Not enough purchases for a market trend. Thursday was the last reported market with live purchases traded at 143.00.

Negotiated Cash Sales:				
<b>Confirmed:</b>	9,483	<b>Week Ago:</b>	12,305	<b>Year Ago:</b> 1,653
<b>Week to date:</b>	110,427	<b>Week Ago:</b>	71,054	<b>Year Ago:</b> 62,503

<u>Live Basis</u>	<u>Steers</u>	<u>Heifers</u>
<b>Over 80% Choice</b>	143.00-148.50, avg 147.41	144.00-148.00, avg 144.53
<b>65-80% Choice</b>	143.00	143.00
<b>35-65% Choice</b>	143.00	-
<b>0-35% Choice</b>	-	-
<b>Total All Grades</b>	143.00-148.50, avg 147.23	143.00-148.00, avg 144.42
<u>Dressed Basis</u>		
<b>Over 80% Choice</b>	228.00-228.50, avg 228.41	-
<b>65-80% Choice</b>	228.00	-
<b>35-65% Choice</b>	-	-
<b>0-35% Choice</b>	-	-
<b>Total All Grades</b>	228.00-228.50, avg 228.35	-

**WEEKLY COMMODITY FUTURES TRENDS**

Compared to last week, Live Cattle 1.25 to 2.42 lower, Lean Hogs 2.28 to 5.17 lower, Feeder Cattle 1.08 to 4.78 lower.

Daily Futures Closes

	Mon.	Tues.	Wed.	Thu.	Fri.
<b>Cattle</b>					
Oct	145.72	146.30	145.87	144.85	144.25
Dec	150.90	151.07	150.75	149.35	148.55
Feb	155.25	155.20	154.90	153.77	152.70
Apr	158.90	158.87	158.47	157.52	156.42
Jun	155.05	155.10	154.85	153.95	152.92
<b>Lean Hogs</b>					
Oct	96.47	95.97	94.42	94.12	92.62
Dec	88.15	88.17	86.45	85.67	82.80
Feb	91.92	92.15	90.65	89.75	87.05
Apr	95.95	96.35	95.55	94.72	92.47
May	99.72	100.00	99.47	98.77	97.17
<b>Fdr Cat</b>					
Sep	179.95	178.80	178.17	178.20	178.12
Oct	182.30	180.02	179.22	177.97	178.35
Nov	183.52	181.27	180.32	178.05	178.25
Jan	184.97	182.90	181.97	179.95	179.47
Mar	187.80	185.70	184.85	183.07	182.17
<b>Milk</b>					
Sep	19.90	19.89	19.88	19.87	19.87
Oct	21.54	21.94	21.70	21.46	20.90
Nov	21.43	21.79	21.43	21.27	20.70

**WEEKLY COMMODITY GRAIN FUTURES TRENDS**

Compared to last week, Soybeans 0.18 to 0.24 lower, Wheat 0.10 to 0.21 higher, Corn 0.01 to 0.04 lower, KC Wheat 0.10 to 0.15 higher, Soybean Meal 1.60 to 10.30 higher.

Daily Grain Futures Closes

	Mon.	Tues.	Wed.	Thu.	Fri.
<b>Soybeans</b>					
Nov	1461 1/4	1478 3/4	1461 1/4	1457	1425 3/4
Jan	1467 1/2	1484 1/2	1467	1463 1/4	1431 3/4
Mar	1469 1/4	1485 1/2	1468 1/2	1465	1434 1/2
May	1471 1/4	1487	1470 3/4	1467 3/4	1437 1/2
Jul	1469 1/2	1485	1469 3/4	1467 1/4	1436 3/4
<b>Wheat</b>					
Dec	830 1/2	893 3/4	903 3/4	910 3/4	880 1/2
Mar	846 1/2	907 1/4	915 1/4	922	893 3/4
May	855 3/4	914 3/4	921 3/4	927 1/2	900 3/4
Jul	850 3/4	905	910 1/4	913 1/2	888 1/4
Sep	853	903 3/4	907 1/4	911	886 1/2
<b>Corn</b>					
Dec	678 1/4	692	685 1/2	688 1/4	676 3/4
Mar	683 1/2	696 3/4	690 1/4	693 1/4	681 3/4
May	684 1/4	697	690 3/4	694 1/4	682 1/4
Jul	678 1/2	690 3/4	684 1/2	688 1/2	675 3/4
Sep	635 1/4	645 3/4	640 1/2	642 1/2	629 3/4
<b>KC Wheat</b>					
Dec	909 3/4	963	967	979 1/2	950 1/2
Mar	908	959 1/2	963 1/2	975 1/2	947 1/4
May	907 1/2	957 3/4	961 1/2	973	945 1/4
Jul	898 1/2	944 1/2	948 1/4	958 1/4	931 3/4
Sep	896 1/4	939 1/4	941 3/4	951 3/4	926 3/4
<b>SB Meal</b>					
Oct	438.20	450.80	454.70	445.90	439.90
Dec	429.30	439.40	438.80	428.90	423.30
Jan	424.60	434.10	431.40	423.00	418.40
Mar	416.80	425.50	422.00	414.60	411.10
May	413.20	420.70	416.80	410.20	407.00

**MISSOURI GRAIN WEEKLY TRENDS**

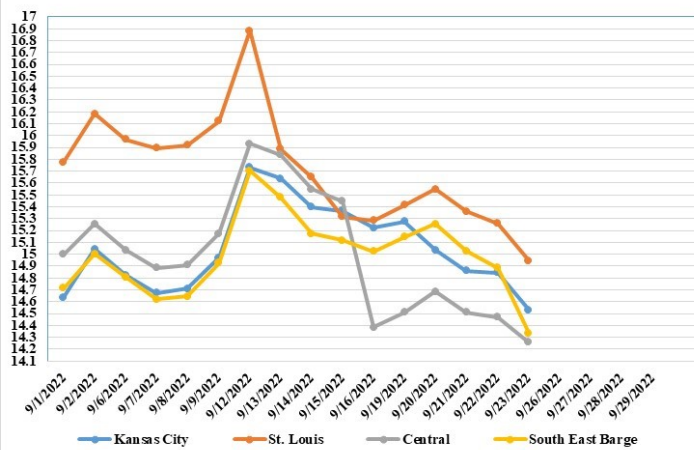
Compared to last week, Soybeans 0.18 to 1.07 lower, Wheat 0.04 lower to 0.21 higher, Corn steady to 0.30 lower, Sorghum steady.

Area	#1 Soybeans	#2 Soft Wheat	#2 Corn	#2 Grain Sorghum
<b>Kansas City</b>				
Friday**	14.34-15.59	9.00	7.02-7.32	7.12
Monday	14.51-15.56	8.71	6.98-7.03	7.13
Tuesday	14.69-15.74	9.34	7.12-7.17	7.27
Wednesday	14.51-15.56	9.44	7.10	7.21
Thursday	14.47-15.42	9.51	7.13	7.23
Friday	14.16-15.11	9.21	7.02	7.12
<b>St. Louis</b>				
Friday**	15.28	8.45-8.50	7.13	6.37-6.77
Monday	15.41	8.06-8.21	7.07	6.38-6.78
Tuesday	15.55	8.62-8.84	7.18	6.52-6.92
Wednesday	15.36	8.64-8.94	7.09	6.46-6.86
Thursday	15.26	8.71-9.01	7.14	6.48-6.88
Friday	14.95	8.41-8.71	7.04	6.37-6.77
<b>Central</b>				
Friday**	14.39	8.40	7.17	---
Monday	14.51	8.11	7.08-7.18	---
Tuesday	14.69	8.74	7.12-7.22	---
Wednesday	14.51	8.84	7.06-7.16	---
Thursday	14.47	8.91	7.08	---
Friday	14.16-14.36	8.61	6.97	---
<b>S.E. MO</b>				
Friday**	14.95-15.09	8.60	6.87-6.97	---
Monday	15.11-15.21	8.31	6.88-6.98	---
Tuesday	15.19-15.39	8.94	6.96-7.12	---
Wednesday	14.91-15.16	9.04	6.92-6.98	---
Thursday	14.77-14.97	9.11	6.78-6.98	---
Friday	14.16-14.61	8.81	6.55-6.82	---

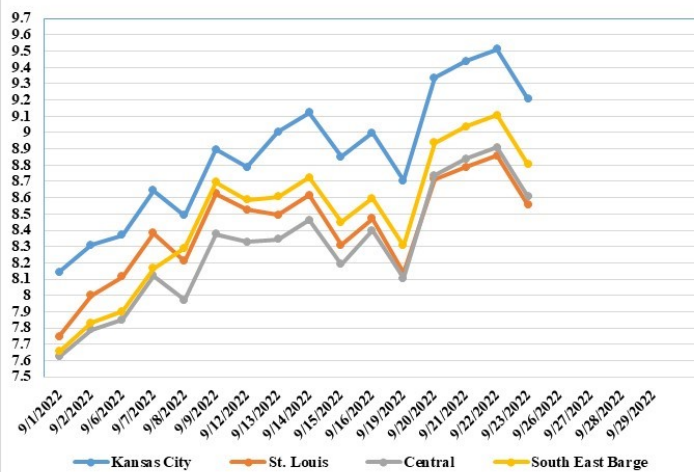
(PRICES PER BUSHEL) \*NEW CROP \*\*PREVIOUS WEEK'S PRICES  
\*Bids calculated using Kansas City, St. Louis, and St. Joseph bids

**MONTHLY GRAIN CROP**

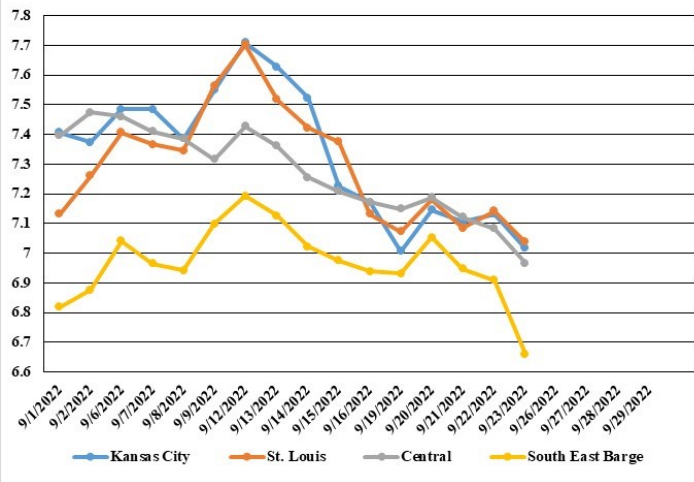
September 2022 Soybean Bids



September 2022 Wheat Bids



September 2022 Corn Bids



\*Axis value ranges may be updated to reflect data points.

**WHOLESALE FEEDSTUFFS PRICES 09/23/22**  
(DOLLARS PER TON-BULK BASIS)

Area	Soybean Hulls - Pellets	Soybean Meal 46.5-48%	Corn Gluten Pellets 21%	Wheat Middlings
Kansas City	295.00	480.90	324.33	285.00
St. Louis	n/a	n/a	315.00	257.50



**Total natural cheese stocks** in refrigerated warehouses on August 31, 2022 were down 3 percent from the previous month but up 4 percent from August 31, 2021.

**Butter stocks** were down 10 percent from last month and down 22 percent from a year ago.

**Total frozen poultry supplies** on August 31, 2022 were up 2 percent from the previous month and up 11 percent from a year ago. Total stocks of chicken were up 2 percent from the previous month and up 17 percent from last year. Total pounds of turkey in freezers were up 1 percent from last month and up 1 percent from August 31, 2021.

**Total frozen fruit stocks** were up 10 percent from last month and up 2 percent from a year ago.

**Total frozen vegetable stocks** were up 19 percent from last month but down slightly from a year ago.

**Total red meat supplies** in freezers were up 1 percent from the previous month and up 20 percent from last year. Total pounds of beef in freezers were up 1 percent from the previous month and up 24 percent from last year. Frozen pork supplies were up 1 percent from the previous month and up 17 percent from last year. Stocks of pork bellies were down 24 percent from last month but up 85 percent from last year.

[CATTLE ON FEED](#) 09/23/22

**Cattle and calves on feed** for the slaughter market in the United States for feedlots with capacity of 1,000 or more head totaled 11.3 million head on September 1, 2022. The inventory was slightly above September 1, 2021. This is the second highest September 1 inventory since the series began in 1996.

**Placements** in feedlots during August totaled 2.11 million head, slightly above 2021. Net placements were 2.06 million head. During August, placements of cattle and calves weighing less than 600 pounds were 430,000 head, 600-699 pounds were 320,000 head, 700-799 pounds were 465,000 head, 800-899 pounds were 532,000 head, 900-999 pounds were 270,000 head, and 1,000 pounds and greater were 95,000 head.

**Marketings** of fed cattle during August totaled 2.00 million head, 6 percent above 2021.

**Other disappearance** totaled 53,000 head during August, 10 percent below 2021.

[MISSOURI WEEKLY HAY SUMMARY](#) 09/22/22

Fall has officially arrived and brought a cold front with it. Frost is still a few weeks away, but light jackets are needed after the record high temperatures we had at the beginning of the week. A few scattered showers were around, but nothing really significant enough to help the dry areas. The most recent drought monitor showed a substantial increase to the drought effected areas. Missouri has about 73 percent impacted by some level of drought, compared to about 52 percent last week. Hay movement is slow, although there have been some farmers getting one more hay cutting in before harvest really picks up. The supply of hay is moderate and demand is light to moderate and prices mostly steady. The Missouri Department of Agriculture has a hay directory visit <http://mda.mo.gov/abd/haydirectory/> for listings of hay <http://agebb.missouri.edu/haylst/>

Alfalfa - Supreme 250.00-300.00, small square 10.00-15.00 per bale

Alfalfa - Premium 180.00-250.00

Alfalfa - Good 150.00-180.00, small square 5.00-9.00 per bale

Alfalfa - Fair 125.00-150.00

Alfalfa/grass mix - Good/Premium small square 5.00-9.00 per bale

Mixed grass - Good/Premium 125.00-175.00

Mixed grass - Fair/Good 100.00-150.00, small square 5.00-8.00 per bale

Mixed grass - Fair 50.00-85.00 per large round bale

Wheat straw - 4.00-7.00 per small square bale

Please Note: The above volumes (tonnage, acres, and bales) listed on this USDA LPGMN report are for confirmed trades only, it does not include estimated volume (tonnage) for bids or offers to the trade.

The current hay directory can be found at:

<https://apps.mda.mo.gov/HayDirectory>.

List your hay for sale at:

<https://agmarketnews.mo.gov/hay-directory/hay-listing-online-form#no-back>

[MISSOURI WEEKLY SHEEP/GOAT AUCTION SUMMARY](#)

9/26/22

Receipts: 1657 Week Ago: 1806 Last Year: 0

All prices CWT unless otherwise noted.

**SHEEP:** Feeder lambs Small and Medium 1-2 24 hd 41 lbs 210.00. Small and Medium 1-2 hair 35-50 lbs 250.00-320.00. Slaughter lambs Choice and Prime 1-3 woolled and shorn 50-60 lbs 200.00-232.50. Good 1-2 woolled and shorn 80 lbs 110.00-120.00. Choice and Prime 1-3 hair 50-70 lbs 235.00-285.00; 70-80 lbs 225.00-250.00. Choice 1-3 hair 50-70 lbs 200.00-240.00; 70-80 lbs 150.00-200.00; 80-100 lbs 127.50-150.00. Good 1-2 hair 11 hd 76 lbs 100.00; 80-105 lbs 110.00-135.00. Slaughter ewes Cull and Utility 1-2 pkg 140 lbs 120.00 per head. Utility and Good 1-2 hair 90-120 lbs 120.00-160.00 per head. Cull and Utility 1-2 hair pkg 97 lbs 85.00. Cull and Utility 1-2 pkg 86 lbs 70.00; 125-130 lbs 105.00-125.00 per head. Replacement ewes Small and Medium 1-2 yearlings 50-65 lbs 175.00-285.00 per head, thin 145.00-165.00 per head; 1-2 yrs pkg 85 lbs open 175.00 per head; 2-4 yrs 120-145 lbs exposed 175.00-190.00 per head; 2-4 yrs 115-120 lbs winter bred 175.00-270.00 per head. Bucks Small and Medium 1-2 hair yearlings 85-120 lbs 240.00-425.00 per head.

**GOATS:** Feeder kids Selection 1 30-50 lbs 305.00-380.00. Selection 2 25-50 lbs 225.00-305.00, pygmies 215.00-245.00. Slaughter kids Selection 1 50-75 lbs 285.00-320.00. Selection 2 50-80 lbs 210.00-277.50, pygmies 230.00. Selection 3 50-60 lbs 140.00-150.00. Slaughter nannies/does Selection 1-2 60-105 lbs 125.00-150.00. Selection 1-2 80-110 lbs 120.00-210.00 per head. Slaughter bucks/billies Selection 1-2 60-75 lbs pygmies 185.00-205.00; pkg 82 lbs 270.00. Wether kids Selection 1 60-85 lbs 290.00-300.00. Replacement nannies/does Selection 1-2 yearlings 40-55 lbs open 235.00-275.00 per head; pkg 60 lbs open 310.00 per head; 1-2 yrs 80-90 lbs exposed 250.00-310.00 per head; 2-4 yrs 80-100 lbs exposed 225.00-290.00 per head; 100-115 lbs exposed 210.00-245.00 per head

Explanatory Notes: Stage - Represents estimated lambing/kidding period (Open, Exposed, Bred, Fall = Sep-Nov, Win = Dec-Feb, Spr = Mar-May, Sum=Jun-Aug

[NATIONAL DIRECT DELIVERED FEEDER PIG REPORT](#)

09/23/22 Receipts: 73,480 Week ago: 71,001 Year Ago: 82,556

Early weaned pigs 2.00 per head lower. Feeder pigs 6.00 per head lower.

Early weaned pigs 10-12 lbs. basis: Formula 47,080 head 37.20-53.26, weighted average 44.13. Cash 22,600 head 20.00-44.00, weighted average 35.67

Feeder pigs 40 pounds basis: Cash 3,800 head 51.00-62.00, weighted average 54.00

[NATIONAL DAILY DIRECT PRIOR DAY HOG REPORTS FOR 09/23/22](#)

[BARROWS AND GILTS](#) (Carcass Basis): 6,230 head  
Base Carcass Price, 84.00-105.00, weighted average 93.73

[SOWS \(Live Basis\)](#): 6,511 head  
300-500 lbs. 31.00-82.00  
Over 500 lbs. 62.81-84.00.

[MISSOURI WEEKLY DIRECT SLAUGHTER CATTLE REPORT](#) 09/23/22

Weekly Receipts: 480 Week ago: 320 Year ago: 280  
Trading as of Friday morning: light to moderate with flat dressed sales 1.00 higher and grid dressed sales inactive.

[LIVE STEERS & HEIFERS:](#) 2loads 145.00  
[DRESSED STEERS & HEIFERS:](#) 7 loads flat Thu 227.00; 3 loads Fri morning flat 227.00

[GRADE AND WEIGHT \(Grid\):](#) no sales reported

Click here for the current [National Crop Progress](#)  
Click here for the current [Missouri Crop Progress](#)