

# Weekly Market Summary

Published by:  
**Missouri Department of Agriculture**  
**Ag Business Development Division**  
**Market News Program**



Chris Chinn, Director  
 Jill Wood, Division Director  
 Tony Hancock, Editor  
<http://www.ams.usda.gov/marketnews.htm>  
<http://www.ams.usda.gov/marketnews.htm>

Michael L. Parson, Governor

Volume XLII, Number 40 ♦ P.O. Box 630, Jefferson City, MO 65102 ♦ (573) 751-4211 ♦ Monday, October 10, 2022

## MISSOURI WEEKLY FEEDER CATTLE WEIGHTED AVERAGE REPORT

Receipts: 23,951 Week ago: 24,574 Year ago: 19,262

Steers and Heifers Medium and Large 1—Weighted average weights and prices

### STEERS: Medium and Large 1

286 lbs. 210.84	477 lbs. 202.10	674 lbs. 188.82	869 lbs. 178.40
324 lbs. 210.76	519 lbs. 193.00	724 lbs. 180.24	921 lbs. 170.91
376 lbs. 215.26	574 lbs. 192.76	770 lbs. 176.33	965 lbs. 163.89
427 lbs. 203.81	620 lbs. 186.67	821 lbs. 178.72	

### HEIFERS: Medium and Large 1

275 lbs. 157.44	474 lbs. 169.90	671 lbs. 175.59	886 lbs. 154.93
328 lbs. 177.70	523 lbs. 170.74	722 lbs. 172.19	917 lbs. 142.34
371 lbs. 172.53	569 lbs. 176.68	775 lbs. 161.77	
428 lbs. 174.06	623 lbs. 177.80	829 lbs. 157.28	

### Missouri Steer (Heifer) Stocker Formula for 10/10/2022

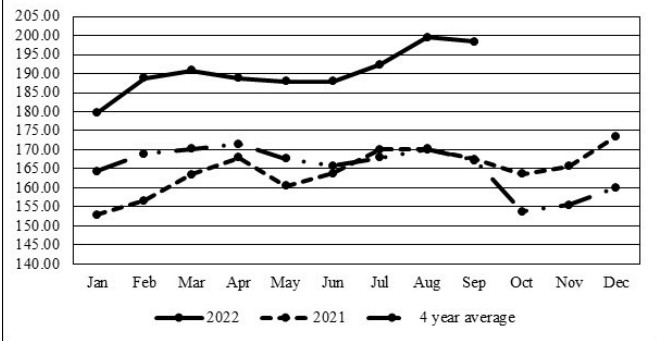
Monday's Missouri Stocker Formula consists of **3770 (5058)** head with a weighted average weight of **539.76 (543.85)** lbs. and a price value of **186.22 (167.68)**, 6.18 lower (1.50 higher) than last Monday.

This a rolling seven day calculated weighted value which combines all Feeder Steers reported by MDA/USDA Market News Service weighing from 400-649 lbs. in the Medium and Large 1 and Medium and Large 1-2 frame and muscle classifications, including all comment cattle except Brahman X. Heifer values are in parentheses.

### Missouri Weekly Cattle Auction Summary 10/10/2022

Compared to last week, markets continue to be very mixed. Overall steer under 650 lbs. sold mostly 5.00 lower, weights over 650 lbs. sold mostly steady. Feeder heifers under 550 lbs. sold steady to 2.00 lower, weights over 550 lbs. sold steady to 4.00 higher. The supply of feeders was moderate with many more unweaned, unvaccinated calves offered than buyers would prefer to see. Demand was mixed and mostly dependent upon heath programs or lack there off. Although the percentage of steers and heifers was fairly normal, there was an unusually large number of six weight heifers this week. Several load lots of six weight heifers sold at different barns this week at prices which made many observers who might not have been paying a lot of attention take a second look to see if they were really heifers. Although many of these heifers were confirmed as being bought to be fed out, it is quite likely several showed up at barns earlier than planned due to dry conditions, resulting in lack of grass and hay supplies. Under normal conditions it is likely many of these same heifers would have been grown out and brought to market at a later date as replacements. Kingsville Livestock Market had one of the several impressive prices around the state this week with 82 head load of 618 lb. heifers which sold at 190.00. Once again this week this week the largest draft in the state was at Ozarks Regional Stockyards with 230 head of 921 lb. steers selling in one hammer drop at 168.50. This near identical sale to the one last week was 5.50 lower. Although grain harvest is in full swing around the state, it seemed there was much more talk about hay supplies than corn yields around the barns. Boxed beef cutouts were lower this week. Choice closed at 246.02, down 2.32 and select at 216.13, down 4.00 compared to last Friday. Livestock slaughter continues to be running at an impressive pace and feed yards are said to be very current. Negotiated sales gained a bit of ground this week, as of the Friday afternoon report volume was a bit shy of 95K head. Live sales were reported 144.00-148.00 and dressed sales mostly at 230.00. The Missouri Stocker Formula consist of 3770 head with a weighted average weight of 539.76 and a price value of 186.22, 6.18 lower than last week. The steer/heifer spread was 18.54.

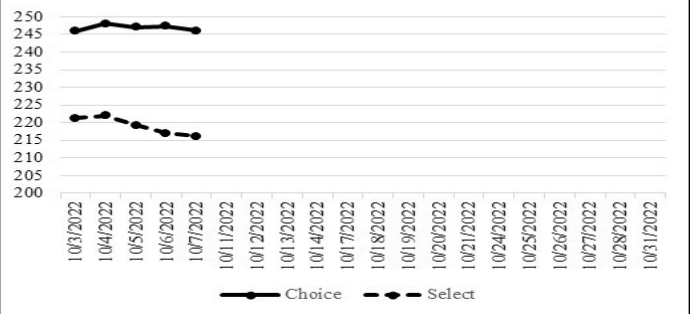
### Missouri Stocker Formula - Steers



### NATIONAL BOXED BEEF CUTOFF/BOXED BEEF CUTS

DATE	CHOICE	SELECT	TOTAL LOADS
10/3	245.94	221.31	116
10/4	248.04	221.91	99
10/5	247.06	219.22	169
10/6	247.36	216.99	208
10/7	246.07	216.13	133
5 Day Simple Average			

### Boxed Beef Cuts October 2022



\*Axis value ranges may be updated to reflect data points.

### WEEKLY LIVESTOCK SLAUGHTER 10/08/22

	CATTLE	HOGS	SHEEP
Week to Date:	664,000	2,558,000	33,000
Last Week:	664,000	2,487,000	33,000
Last Year:	657,000	2,599,000	40,000

The Weekly Market Summary, as well as historical summaries, are available on our website <https://agmarketnews.mo.gov/summaries>  
 Market News Hotline: 1-573-522-9244

**SOUTHWEST MISSOURI WEEKLY SUMMARY**

(Joplin and Springfield)

Receipts: 8000 Week ago: 8861 Year ago: 7126

Compared to last week, early week steers steady to 4.00 higher and heifers 2.00 to 6.00 higher; late week steers under 700 lbs steady to 4.00 lower, over 700 lbs steady to firm and heifers under 600 lbs 2.00 to 4.00 lower, over 600 lbs not well tested. Slaughter cows 3.00 to 5.00 lower. Slaughter bulls steady to 4.00 lower.

**FEEDER STEERS:**  
Medium and Large 1

Table with 2 columns: Weight (300-400 lbs to 900-1000 lbs) and Price Range (200.00-215.00 to 163.00-174.40)

**FEEDER HEIFERS:**  
Medium and Large 1

Table with 2 columns: Weight (300-350 lbs to 900-950 lbs) and Price Range (160.00-188.00 to 148.00-149.00)

**FEEDER HOLSTEIN STEERS**  
Large 3

Scarce Scarce

**SLAUGHTER COWS:** Breaking and Boning (70-85% lean) 57.50-81.00, high dressing 71.00-93.00; low dressing 53.00-67.00. Lean (85-90%) 55.00-69.50

**SLAUGHTER BULLS:** Yield Grade 1-2 1225-2230 lbs. 91.00-110.50; high dressing 104.00-115.00; low dressing 72.00-94.00

**BRED COWS:** Medium and Large 1 few 2-8 yrs 1025-1315 lbs 1st stage 1250.00-1275.00. Medium and Large 1-2 2-8 yrs 965-1500 lb 2nd to 3rd stage 925.00-1275.00; over 8 yrs 1120-1180 lbs 2nd to 3rd stage 860.00-900.00 per head  
**BRED HEIFERS:** Medium and Large 1-2 yearlings 760-832 lbs 1st stage 800.00-935.00 per head

**COW & CALF PAIRS:** Medium and Large 1-2 2-8 yrs 985-1625 lbs with baby to over 300 lb calves 1150.00-1650.00; over 8 yrs 1440-1625 lbs with 150-300 lb calves 1500.00-1525.00 per head

**SOUTH CENTRAL MISSOURI WEEKLY SUMMARY**

(West Plains, Phillipsburg)

Receipts: 4809 Week ago: 3524 Year Ago: 3044

Compared to last week, steer and heifer calves steady to 4.00 lower. Yearling steers 5.00 lower. Slaughter cows and bulls 3.00 to 5.00 lower.

**FEEDER STEERS:**  
Medium and Large 1

Table with 2 columns: Weight (300-400 lbs to 230 hd 918 lbs) and Price Range (200.00-222.00 to 168.50)

**FEEDER HEIFERS:**  
Medium and Large 1

Table with 2 columns: Weight (350-400 lbs to 700-800 lbs) and Price Range (177.00-185.00 to 150.50-159.00)

**FEEDER HOLSTEIN STEERS**  
Large 3

Table with 2 columns: Weight (Pkg 447 lbs, Pkg 659 lbs) and Price (110.00, 120.00)

**SLAUGHTER COWS:** Breaking and Boning (70-85% lean) 62.50-78.00, high dressing 73.50-87.00; low dressing 58.00-70.00. Lean (85-90%) 57.00-70.00

**SLAUGHTER BULLS:** Yield Grade 1-2 1160-2325 lbs. 87.00-108.00; high dressing 104.00-125.00; low dressing 70.00-90.00

**BRED COWS:** Medium and Large 1-2 2-8 yrs 951-1470 lbs 2nd to 3rd stage 885.00-1200.00, 1st stage 750.00-1000.00 per head. Medium and Large 2 2-8 yrs 750-1142 lbs 1st to 3rd stage 650.00-1000.00 per head

**COW & CALF PAIRS:** Medium and Large 1-2 2-8 yrs 1010-1245 lbs with 150-300 lb calves 1350.00-1450.00 per pair. Medium and Large 2 3 pair 2-8 yrs 1050-1100 lbs with 150-300 lb calves 1250.00 per pair

**BRED HEIFERS:** Medium and Large 1-2 yearlings 772-907 lbs 1st to 3rd stage 800.00-1000.00 per head

**WEST CENTRAL MISSOURI WEEKLY SUMMARY**

(Kingsville, Windsor, Butler)

Receipts: 5396 Week ago: 6149 Year ago: 3969

Compared to last week, steer and heifer calves weak to 5.00 lower and yearlings mostly steady. Slaughter cows weak to 6.00 lower.

**FEEDER STEERS:**  
Medium and Large 1

Table with 2 columns: Weight (300-400 lbs to 800-900 lbs) and Price Range (199.00-224.00 to 176.00-182.75)

**FEEDER HEIFERS:**  
Medium and Large 1

Table with 2 columns: Weight (300-400 lbs to 700-800 lbs) and Price Range (163.00-192.50 to 154.00-178.00)

**SLAUGHTER BULLS:** Yield Grade 1-2 1170-2170 lbs 94.00-107.50; high dressing 110.50-118.00; low dressing 83.50-97.00

**SLAUGHTER COWS:** Breaking and Boning (70-85% lean) 60.00-79.50, high dressing 70.00-88.00. Lean (85-90%) 50.00-68.50

**BRED COWS:** Medium and Large 1 2-4 yrs 1063-1238 lbs 2nd to 3rd stage 1300.00-1650.00, 1st stage 1175.00; 5-8 yrs 11 hd 1221 lbs 2nd to 3rd stage 1725.00 per head

**COW & CALF PAIRS:** Medium and Large 1 5-8 yrs 1100-1285 lbs with 150-300 lb calves 1775.00-1850.00, 7 pair rebred 1st stage with 150-300 lb calves 2100.00 per pair

**NORTHEAST MISSOURI WEEKLY SUMMARY**

(Bowling Green, Kingdom City, Palmyra)

Receipts: 4329 Week ago: 4508 Year ago: 3851

Compared to last week, steers 450-700 lbs steady to 3.00 higher, several pots 800-850 lbs 2.00 to 5.00 higher, over 850 lbs firm undertone. Heifers 400-500 lbs lower undertone on a light test, 500-600 lb heifers unevenly steady and 600-650 lbs firm to higher undertone. Slaughter cows steady to 5.00 lower.

**FEEDER STEERS:**  
Medium and Large 1

Table with 2 columns: Weight (400-500 lbs to 900-930 lbs) and Price Range (210.00-224.00 to 171.25-171.85)

**FEEDER HEIFERS:**  
Medium and Large 1

Table with 2 columns: Weight (400-500 lbs to 600-700 lbs) and Price Range (175.00-182.00 to 176.75-182.75)

**SLAUGHTER BULLS:** Yield Grade 1-2 1275-2580 lbs 103.00-114.00; low dressing 89.00-101.00

**SLAUGHTER COWS:** Breaking and Boning, (70-85% lean) 71.00-85.50; high dressing 83.50-91.50; low dressing 62.00-74.00. Lean (85-90%) 70.00-79.00

**SLAUGHTER STEERS:** Choice and Prime 2-3 pkg 151.00. Choice 2-3 145.50-148.00. Select and Choice 1-3 138.00-143.50

**BRED COWS:** Medium and Large 1 2-8 yrs 1164-1348 lbs 2nd to 3rd stage 1675.00-1950.00. Medium and Large 1-2 2-8 yrs 1055-1488 lbs 2nd to 3rd stage 1250.00-1525.00, 1st stage 900.00-1100.00 per head

**SLAUGHTER HEIFERS:** Choice 2-3 144.00-148.50. Select and Choice 1-3 142.00

**COW & CALF PAIRS:** Medium and Large 1 2-8 yrs 1200-1250 lbs with 150-300 lb calves 1900.00-2000.00 per pair

**NORTH CENTRAL MISSOURI WEEKLY SUMMARY**

(Macon, Unionville, Green City, New Cambria)

Receipts: 4089 Week ago: 1350 Year ago: 2487

Compared to the recent sales, steers and heifers uneven from 5.00 lower to 4.00 higher. Slaughter cows steady to 6.00 lower.

\*Some sale barns on a bi-weekly schedule and may not have a sale each week.

**FEEDER STEERS:**  
Medium and Large 1

Table with 2 columns: Weight (450-500 lbs to 62 hd 934 lbs) and Price Range (203.00-209.00 to 178.00)

**FEEDER HEIFERS:**  
Medium and Large 1

Table with 2 columns: Weight (400-500 lbs to 700-800 lbs) and Price Range (176.00-200.00 to 168.50-185.00)

**SLAUGHTER BULLS:** Yield Grade 1-2 1430-2095 lbs 85.00-109.50

**SLAUGHTER COWS:** Breaking and Boning, (70-85% lean) 69.00-85.00; low dressing 60.00-76.00. Lean (85-90%) 60.00-76.50

**BRED COWS:** Scarce

**COW & CALF PAIRS:** Scarce

**SOUTHEAST MISSOURI WEEKLY SUMMARY**

(Jackson and Farmington)

Receipts: 2182 Week ago: 1630 Year ago: 1640  
 Compared to last week, steers and heifers uneven from 10.00 lower to 2.00 higher. Slaughter cows 3.00 to 5.00 lower and slaughter bulls 1.00 to 2.00 lower.

**FEEDER STEERS:**  
 Medium and Large 1

300-400 lbs.	173.00-209.00
400-500 lbs.	170.00-197.00
500-600 lbs.	160.00-192.00
600-700 lbs.	148.00-181.00
700-800 lbs.	148.00-173.00
800-900 lbs.	150.00-155.00

**FEEDER HEIFERS:**  
 Medium and Large 1

300-400 lbs.	145.00-165.00
400-500 lbs.	142.50-174.00
500-600 lbs.	139.00-166.00
600-700 lbs.	145.00-164.00
700-800 lbs.	135.00-158.00
900-950 lbs.	129.00-143.00

**SLAUGHTER BULLS:** Yield  
 Grade 1-2 1090-2400 lbs. 84.00-102.00, high dressing 104.00-109.50

**SLAUGHTER COWS:** Breaking and Boning (75-85% lean) 62.50-80.00; high dressing 76.00-86.50. Lean (85-90% lean) 46.00-65.50

**BRED COWS:** Medium and Large 2 2-8 yrs 1060-1205 lbs 2nd to 3rd stage 750.00-1050.00 per head

**COW & CALF PAIRS:** Medium and Large 2 couple 2-8 yrs 1000 lbs with baby to 150 lb calves 1125.00-1275.00 per head

**EAST CENTRAL MISSOURI WEEKLY SUMMARY**

(Cuba, Vienna)

Receipts: 1657 Week ago: 2417 Year ago: 2247  
 Compared to last week, steers under 650 lbs steady to 8.00 higher, over 650 lbs steady to 3.00 lower. Heifers steady to 3.00 lower. Slaughter cows 4.00 to 6.00 lower.

**FEEDER STEERS:**  
 Medium and Large 1

300-400 lbs.	213.00-225.00
400-500 lbs.	193.00-218.00
500-600 lbs.	187.50-202.50
600-700 lbs.	173.50-195.00
700-750 lbs.	163.50-167.00
800-850 lbs.	155.00-162.00

**FEEDER HEIFERS:**  
 Medium and Large 1

300-400 lbs.	178.50-191.00
400-500 lbs.	164.00-188.00
500-600 lbs.	157.50-168.50
600-700 lbs.	136.00-155.50

**SLAUGHTER BULLS:** Yield  
 Grade 1-2 1305-2600 lbs 90.00-109.00; low dressing 74.00-95.00

**SLAUGHTER COWS:** Breaking and Boning, (70-85% lean) 70.00-78.00; high dressing 77.50-81.50; low dressing 67.00-70.00. Lean (85-90%) 63.00-70.00

**BRED COWS:** Medium and Large 1-2 2-8 yrs 1030-1428 lbs 2nd to 3rd stage 1060.00-1410.00 per head

**COW & CALF PAIRS:** Scarce

**NORTHWEST MISSOURI WEEKLY SUMMARY**

(Tina) (w/e 9-30-22)

Receipts: 1941 Two weeks ago: 1660  
 Compared to two weeks ago, steers 4.00 to 6.00 lower, but a comparable package of 5 weights 8.00 higher. Heifers 6.00 to 8.00 lower. Slaughter cows steady to 2.00 lower.

**FEEDER STEERS:**  
 Medium and Large 1

400-500 lbs.	201.00-224.00
500-600 lbs.	185.00-223.00
600-700 lbs.	171.00-195.00
57 hd 814 lbs..	178.60

**FEEDER HEIFERS:**  
 Medium and Large 1

400-500 lbs.	180.00-192.00
500-600 lbs.	170.00-183.00
600-650 lbs.	153.50-181.00
700-750 lbs.	159.25-167.60
800-850 lbs.	153.50-155.25

**SLAUGHTER BULLS:** Yield  
 Grade 1-2 1095-2190 lbs 88.00-102.50

**SLAUGHTER COWS:** Breaking and Boning, (70-85% lean) 71.00-85.75; high dressing 80.00-94.50. Lean (85-90%) 59.00-69.00

**BRED COWS:** Medium and Large 1-2 2-8 yrs 941-1550 lbs 2nd to 3rd stage 1510.00-1675.00. Medium and Large 2 2-8 yrs 1020-1416 lbs 2nd to 3rd stage 1075.00-1275.00 per head

**COW & CALF PAIRS:** Medium and Large 1-2 2-8 yrs 1006-1310 some rebred with 150 lb to over 300 lb calves 147500-1900.00 per pair

**AFTERNOON NATIONAL SLAUGHTER CATTLE REVIEW 10/07/22**

Thus far for Friday negotiated cash trading has been limited on light demand in all major feeding regions. Not enough purchases in any region for a market trend. The last reported market trend in any region was on Thursday. In the Southern Plains live purchases traded at 144.00. In Nebraska live and dressed purchases traded from 146.00-148.00 and at 230.00, respectively. In the Western Cornbelt, live and dressed purchases traded from 146.00-148.00 and at 230.00, respectively.

Negotiated Cash Sales:					
Confirmed:	5,927	Week Ago:	4,755	Year Ago:	2,962
Week to date:	94,564	Week Ago:	97,384	Year Ago:	84,303

Live Basis	Steers	Heifers
Over 80% Choice	146.00-149.00, avg 147.89	147.00
65-80% Choice	-	143.00
35-65% Choice	-	-
0-35% Choice	-	-
Total All Grades	146.00-149.00, avg 147.89	143.00-147.00, avg 146.31
Dressed Basis		
Over 80% Choice	230.00-232.00, avg 230.35	-
65-80% Choice	-	-
35-65% Choice	-	-
0-35% Choice	-	-
Total All Grades	230.00-232.00, avg 230.35	-

**WEEKLY COMMODITY FUTURES TRENDS**

Compared to last week, Soybeans 1.00 to 2.05 higher, Wheat 0.10 to 3.73 higher, Feeder Cattle 0.23 to 1.00 higher.

Daily Futures Closes

	Mon.	Tues.	Wed.	Thu.	Fri.
Cattle					
Oct	144.32	144.20	144.67	145.32	145.32
Dec	148.02	147.50	147.92	147.87	148.05
Feb	151.55	151.25	151.75	151.62	151.75
Apr	155.30	155.30	155.97	155.80	155.77
Jun	151.90	151.95	152.60	152.55	152.55
Lean Hogs					
Oct	88.77	87.00	90.80	92.37	92.95
Dec	77.72	74.42	76.50	77.77	77.15
Feb	80.10	77.27	78.87	80.30	79.95
Apr	85.67	83.30	84.52	85.62	85.40
May	90.60	88.95	88.95	90.40	90.50
Fdr Cat					
Oct	175.52	174.65	176.55	175.72	174.72
Nov	176.05	175.20	177.32	176.42	175.62
Jan	177.02	176.07	178.07	177.85	176.60
Mar	179.15	178.30	179.95	179.90	178.30
Apr	183.15	182.42	183.90	183.82	182.37
Milk					
Oct	22.20	19.83	21.84	22.11	22.11
Nov	21.38	22.26	21.29	21.94	21.85
Dec	20.97	21.80	20.79	21.34	21.23

**WEEKLY COMMODITY GRAIN FUTURES TRENDS**

Compared to last week, Soybeans 0.03 to 0.09 higher, Wheat 0.10 to 0.41 lower, Corn 0.06 to 0.10 higher, KC Wheat 0.03 to 0.23 lower, Soybean Meal Oct 1.70 higher, others 2.30 to 3.20 lower.

Daily Grain Futures Closes

	Mon.	Tues.	Wed.	Thu.	Fri.
<b>Soybeans</b>					
Nov	1374	1383 1/2	1369 3/4	1358	1367
Jan	1384	1393 1/2	1380 1/2	1370 1/2	1379 1/4
Mar	1391 3/4	1401 1/2	1389	1381	1389
May	1399 1/2	1410 1/2	1397 1/2	1389 3/4	1397 1/4
Jul	1402	1414 3/4	1402	1394 3/4	1402 1/4
<b>Wheat</b>					
Dec	912	903	902	879	880 1/4
Mar	925	915 1/2	915 1/4	892 3/4	895
May	931 1/4	921 3/4	922 1/4	900 1/2	903 1/4
Jul	911	904 1/2	909 1/4	891 1/4	896 1/2
Sep	904 1/2	899 3/4	906	890	895 1/4
<b>Corn</b>					
Dec	680 6/4	683	684	675 1/2	683 1/4
Mar	687 1/2	690	691 1/4	683 1/4	691
May	688	691	692 1/4	684 3/4	692 1/2
Jul	681 3/4	684 3/4	686 1/4	680	687
Sep	629 1/4	632 1/4	634 1/2	633	639 1/4
<b>KC Wheat</b>					
Dec	988 3/4	988 3/4	990 1/4	965	968 3/4
Mar	985 1/2	984 3/4	986 3/4	962 1/2	966 1/4
May	982	980 3/4	984	960	964 3/4
Jul	959 3/4	959 3/4	965 1/2	944 1/4	950 3/4
Sep	947 3/4	949 3/4	956	936	946 1/4
<b>SB Meal</b>					
Oct	405.60	403.00	402.50	397.40	404.90
Dec	405.30	401.50	398.50	393.40	400.70
Jan	402.50	399.10	395.70	392.50	398.10
Mar	398.30	395.80	391.60	389.80	394.10
May	395.80	395.20	390.80	389.30	392.60

**MISSOURI GRAIN WEEKLY TRENDS**

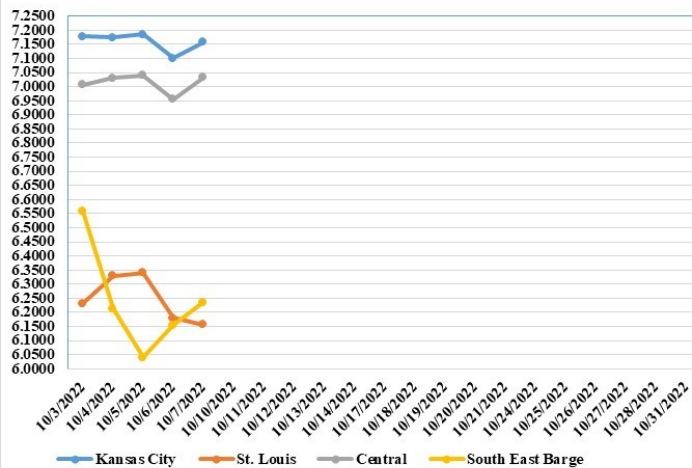
Compared to last week, Soybeans 0.73 lower to 0.12 higher, Wheat 0.42 to 0.51 lower, Corn 0.38 lower to 0.02 higher, Sorghum 0.25 to 0.40 lower.

Area	#1 Soybeans	#2 Soft Wheat	#2 Corn	#2 Grain Sorghum
<b>Kansas City</b>				
Friday**	13.55-14.50	9.62	7.12-7.18	7.13
Monday	13.74-14.24	9.52	7.15-7.21	7.16
Tuesday	13.84-14.34	9.43	7.17-7.18	7.18
Wednesday	13.70-14.20	9.42	7.18-7.19	6.84
Thursday	13.58-14.08	9.09	7.10-7.11	6.76
Friday	13.67-14.17	9.10	7.13-7.18	6.83
<b>St. Louis</b>				
Friday**	13.09-13.40	7.72-9.07	6.28-6.46	6.38-6.53
Monday	13.09-13.18	7.62-8.97	6.21-6.26	6.11
Tuesday	13.22-13.34	7.53-8.88	6.23-6.43	6.13
Wednesday	13.08-13.20	7.52-8.87	6.24-6.44	6.14
Thursday	12.58	7.29-8.64	6.01-6.36	6.06
Friday	12.37-12.67	7.30-8.60	6.08-6.23	6.13
<b>Central</b>				
Friday**	13.57-13.65	9.02	6.88-6.98	—
Monday	13.69-13.74	8.92	7.01	—
Tuesday	13.79-13.84	8.83	7.03	—
Wednesday	13.65-13.70	8.82	7.04	—
Thursday	13.53-13.58	8.59	6.96	—
Friday	13.62-13.67	8.60	7.03	—
<b>S.E. MO</b>				
Friday**	13.02-13.10	9.22	6.03-6.58	—
Monday	13.14-13.19	9.12	6.51-6.61	—
Tuesday	12.58-13.19	9.03	5.68-6.63	—
Wednesday	12.54-13.00	9.02	5.34-6.44	—
Thursday	12.42-12.78	8.79	6.01-6.36	—
Friday	12.51-12.77	8.80	6.08-6.43	—

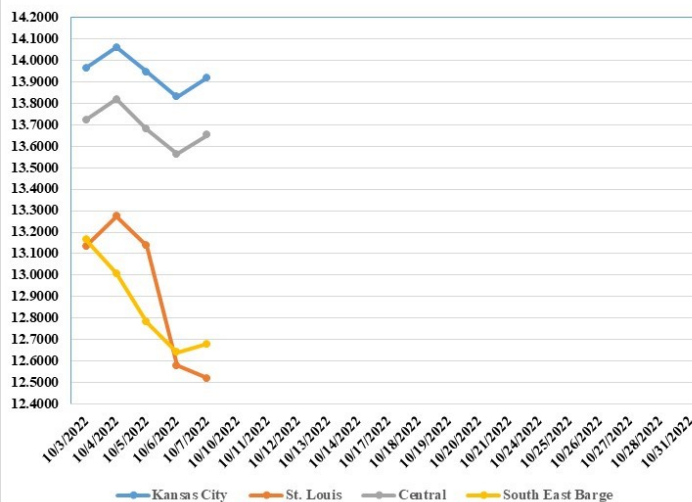
(PRICES PER BUSHEL) \*NEW CROP \*\*PREVIOUS WEEK'S PRICES  
\*Bids calculated using Kansas City, St. Louis, and St. Joseph bids

**MONTHLY GRAIN CROP**

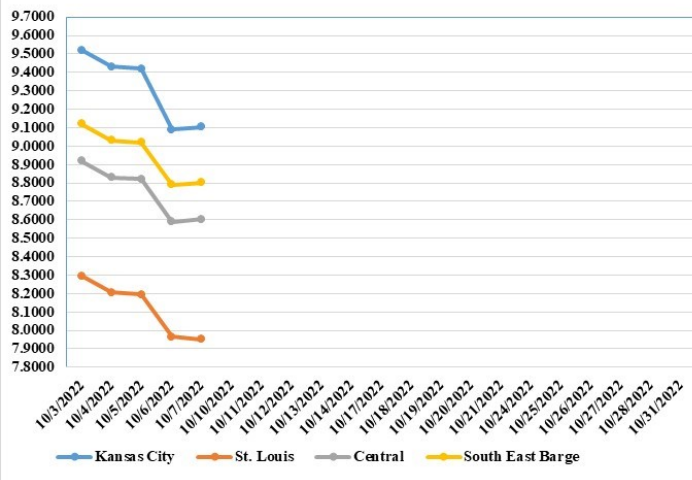
October 2022 Corn Bids



October 2022 Soybean Bids



October 2022 Wheat Bids



\*Axis value ranges may be updated to reflect data points.

**WHOLESALE FEEDSTUFFS PRICES 10/07/22**  
(DOLLARS PER TON-BULK BASIS)

Area	Soybean Hulls - Pellets	Soybean Meal 46.5-48%	Corn Gluten Pellets 21%	Wheat Middlings
Kansas City	288.33	413.20	319.33	285.00
St. Louis	n/a	n/a	300.00	257.50

## GRAIN CRUSHINGS AND CO-PRODUCTS PRODUCTION

10/03/2022

**Total corn consumed** for alcohol and other uses was 484 million bushels in August 2022. Total corn consumption was down 3 percent from July 2022 but up 3 percent from August 2021. August 2022 usage included 91.5 percent for alcohol and 8.5 percent for other purposes. Corn consumed for beverage alcohol totaled 4.01 million bushels, up 18 percent from July 2022 and up 69 percent from August 2021. Corn for fuel alcohol, at 432 million bushels, was down 3 percent from July 2022 but up 4 percent from August 2021. Corn consumed in August 2022 for dry milling fuel production and wet milling fuel production was 93.5 percent and 6.5 percent, respectively.

**Dry mill co-product production** of distillers dried grains with solubles (DDGS) was 1.87 million tons during August 2022, down 3 percent from July 2022 but up 2 percent from August 2021. Distillers wet grains (DWG) 65 percent or more moisture was 1.32 million tons in August 2022, up 3 percent from July 2022 and up 13 percent from August 2021.

**Wet mill corn gluten feed production** was 248,856 tons during August 2022, down 8 percent from July 2022 and down 9 percent from August 2021. Wet corn gluten feed 40 to 60 percent moisture was 189,203 tons in August 2022, down 15 percent from July 2022 and down 8 percent from August 2021.

## BROILER HATCHERY 10/05/2022

### **Broiler-Type Eggs Set in the United States Up 4 Percent**

Hatcheries in the United States weekly program set 239 million eggs in incubators during the week ending October 1, 2022, up 4 percent from a year ago. Average hatchability for chicks hatched during the week in the United States was 80.3 percent. Average hatchability is calculated by dividing chicks hatched during the week by eggs set three-weeks earlier.

### **Broiler-Type Chicks Placed in the United States Up 6 Percent**

Broiler growers in the United States weekly program placed 189 million chicks for meat production during the week ending October 1, 2022, up 6 percent from a year ago. Cumulative placements from the week ending January 8, 2022 through October 1, 2022 for the United States were 7.36 billion. Cumulative placements were up 1 percent from the same period a year earlier.

## MISSOURI WEEKLY HAY SUMMARY 10/06/22

Hay interest remains very high as conditions around the state continue to decline. Many cattlemen and women are being forced to make tough decisions and culling of cattle continues for some it was not the first unplanned trip to the auction this year. Hay is by no means abundant, but it also isn't so scarce it can't be found either. One actually doesn't have to spend an extreme amount of time on the computer or phone to find hay, the problem that potential customers are facing is it is only October. To start feeding now would make for a very long feeding season. Actual hay cost like everything is also much higher than usual, as well as trucking cost. So there is a lot of numbers to pencil down in order to make the best decisions. Near 94 percent of the state is now showing on the drought monitor with 12.5 percent now in D3-D4 status. The supply of hay is light to moderate and demand is moderate and prices mostly steady. The Missouri Department of Agriculture has a hay directory visit <http://mda.mo.gov/abd/haydirectory/> for listings of hay <http://agebb.missouri.edu/haylst/>

Alfalfa - Supreme 250.00-300.00, small square 10.00-15.00 per bale

Alfalfa - Premium 180.00-250.00

Alfalfa - Good 150.00-180.00, small square 5.00-9.00 per bale

Alfalfa - Fair 125.00-150.00

Alfalfa/grass mix - Good/Premium small square 5.00-9.00 per bale

Mixed grass - Good/Premium 125.00-175.00

Mixed grass - Fair/Good 100.00-150.00, small square 5.00-8.00 per bale

Mixed grass - Fair 50.00-85.00 per large round bale

Wheat straw - 4.00-7.00 per small square bale

Please Note: The above volumes (tonnage, acres, and bales) listed on this USDA LPGMN report are for confirmed trades only, it does not include estimated volume (tonnage) for bids or offers to the trade.

The current hay directory can be found at:

<https://apps.mda.mo.gov/HayDirectory>.

List your hay for sale at:

<https://agmarketnews.mo.gov/hay-directory/hay-listing-online-form/#no-back>

## MISSOURI WEEKLY SHEEP/GOAT AUCTION SUMMARY

10/07/22

Receipts: 880 Week Ago: 1044 Last Year: 0

All prices CWT unless otherwise noted.

**SHEEP:** Feeder lambs hair Small and Medium 1-2 30-50 lbs 162.50-230.00, fancy 235.00-255.00. Slaughter lambs Good 1-2 woolled and shorn 125-150 lbs 90.00. Choice and Prime 1-3 hair 50-60 lbs 220.00-232.50; 62 lbs 190.00-210.00; 70-95 lbs 145.00-170.00. Choice 1-3 hair lot 56 lbs 205.00; 60-80 lbs 135.00-165.00; 80-120 lbs 120.00-130.00. Good 1-2 hair 75-105 lbs 102.50-110.00. Slaughter ewes Utility and Good 1-3 175-250 lbs 90.00-95.00. Good 2-3 hair 75-110 lbs 142.50-175.00. Utility and Good 1-3 hair 125-145 lbs 120.00-135.00. Cull and Utility 1-2 hair 100-130 lbs 60.00-80.00. Slaughter bucks 1-2 pkg 215 lbs 95.00. Replacement ewes Small and Medium 1-2 hair yearlings 70-85 lbs exposed 160.00-165.00.

**GOATS:** Feeder kids Selection 1 30-50 lbs 285.00-360.00. Selection 2 25-45 lbs 225.00-260.00, pygmies 205.00-267.50. Selection 3 20-50 lbs pygmies 120.00-177.00. Wether kids Selection 1 pkg 40 lbs 345.00. Selection 3 pkg 45 lbs 155.00. Slaughter kids Selection 1 50-60 lbs 285.00-325.00. Selection 2 50-85 lbs 205.00-277.50. Selection 3 pkg 52 lbs 190.00; pkg 70 lbs 140.00. Slaughter nannies/does Selection 1-2 60-175 lbs 120.00-190.00., pygmies 52 lbs 225.00; 68 lbs 80.00; thin fleshed 85.00-90.00. Slaughter bucks/billies 90-100 lbs 230.00-260.00; 100-135 lbs 180.00-320.00; 150-175 lbs 145.00-215.00. Wethers Selection 1-2 80-125 lbs 205.00-265.00. Wether kids Selection 1pkg 52 lbs 315.00. Selection 2 60-70 lbs 265.00-272.50; pkg 72 lbs 215.00. Replacement nannies/does Selection 1-2 yearlings pkg 57 lbs open 355.00; 1-2 yrs 80-90 lbs exposed 300.00-320.00.

Explanatory Notes: Stage - Represents estimated lambing/kidding period (Open, Exposed, Bred, Fall = Sep-Nov, Win = Dec-Feb, Spr = Mar-May, Sum=Jun-Aug

## NATIONAL DIRECT DELIVERED FEEDER PIG REPORT

10/07/22 Receipts: 89,324 Week ago: 60,274 Year Ago: 132,523

Early weaned pigs 2.00 per head lower. All feeder pigs 3.00 per head lower.

Early weaned pigs 10-12 lbs. basis: Formula 39,789 head 29.81-56.04, weighted average 44.44. Cash 37,799 head 20.00-41.00, weighted average 31.85

Feeder pigs 40 pounds basis: Cash 11,736 head 45.00-58.00, weighted average 50.58

## NATIONAL DAILY DIRECT PRIOR DAY HOG REPORTS FOR 10/07/22

BARROWS AND GILTS (Carcass Basis): 8,221 head

Base Carcass Price, 79.00-98.00, weighted average 88.92

SOWS (Live Basis): 6,263 head

300-500 lbs. 30.00-80.00

Over 500 lbs. 59.21-83.00

## MISSOURI WEEKLY DIRECT SLAUGHTER CATTLE REPORT 10/07/22

Weekly Receipts: 520 Week ago: 760 Year ago: 320

Trading as of Friday morning: light to moderate with flat dressed sales 2.00 higher and grid dressed 2.00 higher.

LIVE STEERS & HEIFERS:

4 loads 147.00

DRESSED STEERS & HEIFERS:

No sales reported

GRADE AND WEIGHT (Grid): 4 loads Thu 240.00

Click here for the current [National Crop Progress](#)

Click here for the current [Missouri Crop Progress](#)