

Weekly Market Summary

Published by:
Missouri Department of Agriculture
Ag Business Development Division
Market News Program



Chris Chinn, Director
 Jill Wood, Division Director
 Tony Hancock, Editor
<http://www.ams.usda.gov/marketnews.htm>
agmarketnews.mo.gov

Michael L. Parson, Governor

Volume XLIII, Number 2 ♦ P.O. Box 630, Jefferson City, MO 65102 ♦ (573) 751-4211 ♦ Monday, January 16, 2023

MISSOURI WEEKLY FEEDER CATTLE WEIGHTED AVERAGE REPORT

Receipts: 49,302 Week ago: 54,479 Year ago: 44,708

Steers and Heifers Medium and Large 1—Weighted average weights and prices

STEERS: Medium and Large 1

328 lbs. 226.94	527 lbs. 211.93	719 lbs. 180.20	915 lbs. 176.02
375 lbs. 224.86	572 lbs. 203.23	782 lbs. 180.05	
423 lbs. 223.24	626 lbs. 192.57	818 lbs. 177.13	
474 lbs. 223.10	670 lbs. 185.94	873 lbs. 180.51	

HEIFERS: Medium and Large 1

331 lbs. 190.62	524 lbs. 182.18	722 lbs. 167.62
377 lbs. 190.35	576 lbs. 177.64	782 lbs. 165.84
428 lbs. 186.89	622 lbs. 173.72	800 lbs. 155.00
475 lbs. 188.12	672 lbs. 171.94	

Missouri Steer (Heifer) Stocker Formula for 01/16/2023

Monday's Missouri Stocker Formula consists of **12,259 (11,052)** head with a weighted average weight of **553.74 (538.75)** lbs. and a price value of **200.02 (176.11)**, 1.59 higher (1.32 higher) than last week.

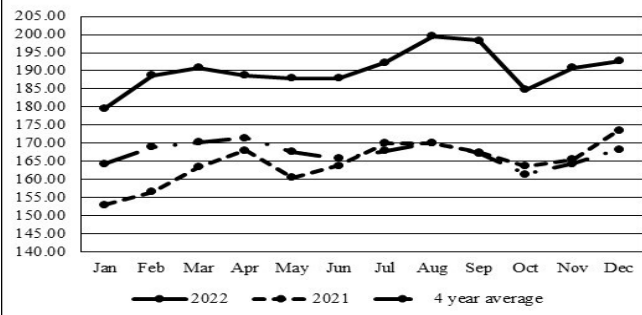
This a rolling seven day calculated weighted value which combines all Feeder Steers reported by MDA/USDA Market News Service weighing from 400-649 lbs. in the Medium and Large 1 and Medium and Large 1-2 frame and muscle classifications, including all comment cattle except Brahman X. Heifer values are in parentheses.

Missouri Weekly Cattle Auction Summary 01/16/2023

Compared to last week feeders sold 2.00 to 5.00 higher. Another big week in the state with barns working long hours to get all the cattle marketed. Demand was good to very good. Reporters noted that even with the heavy supplies of feeders that buyers had plenty of orders to keep markets strong right up till the end and in some cases the highest prices of the day came in the very late hours of the sale. Although it is still quite some time till grass arrives orders have shown up earlier than ever due to the extreme concern of short numbers in the near future. A few notable sales this week included 169 head of 843 lb. fancy steers which sold at Tina Livestock Market for 185.75. Unionville Livestock Market sold 13 head of 608 lb. steers at 215.00 several other 10-20 head drafts of light sixes sold around the state with a 2 in the front as well. Kingsville Livestock Auction sold 34 head of 508 lb. fancy steers at 237.50. All very good prices which no doubt made for some happy producers, but some of the most eye catching drafts this week came from the special replacement sale held at New Cambria Livestock Auction on Saturday where they sold 59 head of 2-4 year old cows bred in the 3rd stage 2400.00-2875.00 per head, with the entire 59 head averaging 2591.00. Boxed beef cutouts were lower for the week, choice closed at 276.62, down 5.01 and select closed at 256.89, down 0.06 compared to last Friday. Negotiated feedlot sales as of Friday afternoon was reported at 66k head. Live sales were reported mostly from 156.00-159.00, dressed sales mostly at 250.00-252.00. Markets came under pressure and the higher prices for feedlot sales was earlier in the week. Lower futures and a drop in cutout values as well as a spike in grain prices midweek all worked against feedlot managers this week. The Missouri Stocker Formula consist of 12,259 head with a weighted average weight of 553.74 lbs. and a price value of 200.02, 1.54 higher than last week. The steer/heifer spread is 23.91.

The Weekly Market Summary, as well as historical summaries, are available on our website <https://agmarketnews.mo.gov/summaries>
 Market News Hotline: 1-573-522-9244

Missouri Stocker Formula - Steers

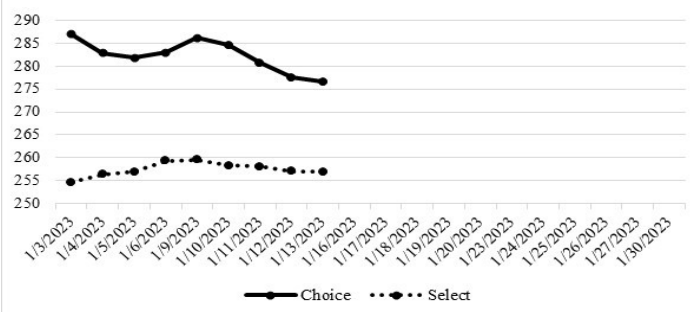


*Graph is updated the first Monday of each month.

NATIONAL BOXED BEEF CUTOUT/BOXED BEEF CUTS

<u>DATE</u>	<u>CHOICE</u>	<u>SELECT</u>	<u>TOTAL LOADS</u>
01/09	286.14	259.60	106
01/10	284.53	258.33	128
01/11	280.73	258.10	116
01/12	277.49	257.01	132
01/13	276.62	256.89	104
5 Day Simple Average	281.10	257.99	

Boxed Beef Cuts January 2023



*Axis value ranges may be updated to reflect data points.

WEEKLY LIVESTOCK SLAUGHTER 01/14/23

	<u>CATTLE</u>	<u>HOGS</u>	<u>SHEEP</u>
Week to Date:	661,000	2,688,000	34,000
Last Week:	563,000	2,296,000	26,000
Last Year:	618,000	2,367,000	33,000

SOUTHWEST MISSOURI WEEKLY SUMMARY

(Joplin and Springfield)

Receipts: 16,355 Week ago: 20,417 Year ago: 14,936

Compared to last week, steers and heifers mostly steady to 5.00 higher, however some plainer cattle trended lower. Slaughter cows uneven from 4.00 lower to 4.00 higher. Slaughter bulls steady to 3.00 lower.

FEEDER STEERS:
Medium and Large 1

300-400 lbs.	208.00-245.00
400-500 lbs.	204.00-240.00
500-600 lbs.	189.00-222.00
600-700 lbs.	176.00-204.00
700-800 lbs.	172.00-193.85
800-900 lbs.	175.00-184.00
25 hd 929 lbs.	179.00

FEEDER HEIFERS:
Medium and Large 1

300-400 lbs.	180.00-212.50
400-500 lbs.	170.00-202.00
500-600 lbs.	168.00-183.00
600-700 lbs.	152.00-177.00
700-800 lbs.	154.00-170.25

FEEDER HOLSTEIN STEERS
Large 3

Pkg 431 lbs.	90.00
500-600 lbs.	115.00-120.00
650-700 lbs.	105.00-118.00
700-750 lbs.	110.00-115.00
800-900 lbs.	110.00-130.00
1050-1100 lbs.	100.00-103.00

SLAUGHTER COWS: Breaking and Boning (70-85% lean) 63.00-79.50, high dressing 72.00-87.00; low dressing 59.00-68.00. Lean (85-90%) 50.00-65.00

SLAUGHTER BULLS: Yield Grade 1-2 1205-2510 lbs. 86.00-104.00; high dressing 97.50-118.00; low dressing 72.00-86.00

BRED COWS: Medium and Large 1 2-8 yrs 1090-1435 lbs 2nd to 3rd stage 1300.00-1675.00, 30 hd over 8 yrs 1390 lbs 2nd to 3rd stage 1350.00. Medium and Large 1-2 2-8 yrs 865-1480 lbs 2nd to 3rd stage 885.00-1300.00, 1st stage 700.00-1150.00 per head

BRED HEIFERS: Medium and Large 1 960-1024 lbs 2nd to 3rd stage 1600.00-1700.00, fancy 28 hd 980 lbs 2nd to 3rd stage 2000.00 per head

COW & CALF PAIRS: Medium 1-2 2-8 yrs 920-1080 lbs with baby to 300 lb calves 1100.00-1300.00, 7 pairs 1030 lbs rebred 1st stage with 150-300 lb calves 1550.00; over 8 yrs 1145 lbs with 150-300 lb calves 1150.00; 2-8 yrs 1120-1125 lbs rebred 1st stage with over 300 lb calves 1825.00 per pair

SOUTH CENTRAL MISSOURI WEEKLY SUMMARY

(West Plains, Phillipsburg)

Receipts: 8603 Week ago: 10,445 Year Ago: 7764

Compared to last week, steers and heifers steady to 4.00 higher. Slaughter cows 2.00 to 4.00 lower. Slaughter bulls steady.

FEEDER STEERS:
Medium and Large 1

300-400 lbs.	214.00-235.00
400-500 lbs.	205.00-237.00
550-600 lbs.	191.00-222.00
600-700 lbs.	176.00-201.00
700-800 lbs.	167.00-182.00
800-900 lbs.	168.00-181.00
Pkg 927 lbs.	168.00

FEEDER HEIFERS:
Medium and Large 1

300-400 lbs.	175.00-196.00
400-500 lbs.	172.50-189.00
550-600 lbs.	164.00-182.00
600-700 lbs.	160.00-177.00
700-800 lbs.	165.00-169.00

FEEDER HOLSTEIN STEERS
Large 3

Scarce Scarce

SLAUGHTER COWS: Breaking and Boning (70-85% lean) 63.50-79.00, high dressing 74.00-89.00; low dressing 54.50-70.00. Lean (85-90%) 50.00-68.00

SLAUGHTER BULLS: Yield Grade 1-2 1180-2440 lbs. 93.00-104.00; high dressing 104.00-120.00; low dressing 60.00-93.00

BRED COWS: Medium and Large 1-2 2-8 yrs 975-1590 lbs 2nd to 3rd stage 850.00-1550.00, 1st stage 1050.00-1250.00; over 8 yrs 1138-1245 lbs 2nd to 3rd stage 750.00-1175.00 per head

BRED HEIFERS: Medium and Large 1-2 785-1010 lbs 1st to 3rd stage 1000.00-1100.00 per head

COW & CALF PAIRS: Medium and Large 1-2 2-8 yrs 1115-1252 lbs with 150-300 lb calves 1350.00-1625.00 per pair

WEST CENTRAL MISSOURI WEEKLY SUMMARY

(Kingsville, Windsor, Butler)

Receipts: 9347 Week ago: 9341 Year ago: 9556

Compared to last week, steer and heifer calves steady to 10.00 higher, yearlings steady to 5.00 higher. Slaughter cows steady to 4.00 lower.

FEEDER STEERS:
Medium and Large 1

400-500 lbs.	209.00-240.00
500-600 lbs.	197.00-235.50
600-700 lbs.	174.00-204.50
700-800 lbs.	168.00-191.00
800-900 lbs.	162.50-179.35

FEEDER HEIFERS:
Medium and Large 1

400-500 lbs.	181.00-210.50
500-600 lbs.	170.00-198.00
600-700 lbs.	165.00-185.75
700-800 lbs.	160.00-169.00
800-900 lbs.	155.00-156.00

SLAUGHTER BULLS: Yield Grade 1-2 1150-2415 lbs 88.00-107.00; high dressing 106.00-116.00; low dressing 72.50-93.00

SLAUGHTER COWS: Breaking and Boning (70-85% lean) 64.50-87.50, high dressing 74.00-78.00; low dressing 58.50-70.50. Lean (85-90%) 58.00-72.50

BRED COWS: Medium and Large 1-2 2-8 yrs 1025-1345 lbs 2nd to 3rd stage 1050.00-1260.00 per head

COW & CALF PAIRS: Scarce

NORTHEAST MISSOURI WEEKLY SUMMARY

(Bowling Green, Kingdom City, Palmyra)

Receipts: 7978 Week ago: 5902 Year ago: 8047

Compared to last week, steers sold steady to firm, heifers under 550 lbs sold 5.00-10.00 higher, over firm to 5.00 higher. Slaughter cows sold steady to 2.00 higher.

FEEDER STEERS:
Medium and Large 1

400-500 lbs.	203.50-229.50
500-600 lbs.	188.00-222.00
600-700 lbs.	173.00-200.00
700-800 lbs.	170.50-178.25
800-850 lbs.	173.00-173.75

FEEDER HEIFERS:
Medium and Large 1

400-500 lbs.	175.00-204.00
500-600 lbs.	171.00-195.00
600-700 lbs.	170.50-188.00
700-800 lbs.	163.00-172.00

SLAUGHTER BULLS: Yield Grade 1-2 1400-2310 lbs 92.00-104.50; high dressing 102.00-115.00; low dressing 87.00-90.00

SLAUGHTER COWS: Breaking and Boning, (70-85% lean) 69.00-82.00; high dressing 80.00-90.00; low dressing 60.00-72.00. Lean (85-90%) 62.00-74.00

SLAUGHTER STEERS: Choice and Prime 2-4 161.00-166.00. Choice 2-3 155.00-161.50

BRED COWS: Scarce

SLAUGHTER HEIFERS: Choice and Prime 2-4 163.00-166.00. Choice 2-3 157.00-164.50

COW/CALF PAIRS: Scarce

NORTH CENTRAL MISSOURI WEEKLY SUMMARY

(Macon, Unionville, Green City, New Cambria)

Receipts: 7142 Week ago: 8047 Year ago: 5178

Compared to last week, steers and heifers steady to 5.00 higher, spots 10.00 higher. Slaughter cows uneven from 3.00 lower to 1.00 higher. *Some sale barns on a bi-weekly schedule and may not have a sale each week.

FEEDER STEERS:
Medium and Large 1

400-500 lbs.	210.00-250.50
500-600 lbs.	195.50-228.00
650-700 lbs.	174.75-215.00
700-800 lbs.	174.85-182.50
850-900 lbs.	183.75-186.85

FEEDER HEIFERS:
Medium and Large 1

400-500 lbs.	176.00-197.50
500-600 lbs.	171.00-199.50
650-700 lbs.	166.60-184.50
700-750 lbs.	167.00-170.60

SLAUGHTER BULLS: Yield Grade 1-2 1660-1915 lbs 95.50-109.50

SLAUGHTER COWS: Breaking and Boning, (70-85% lean) 62.00-77.50; high dressing 79.00-82.50; low dressing couple 67.00-69.00. Lean (85-90%) 55.00-71.00

BRED COWS: Medium and Large 1 2-4 yrs, 1225-1280 lbs, 3rd stage 2400.00-2875.00, 5-8 yrs 1350-1400 lbs 3rd stage 1850.00-2000.00 per head

BRED HEIFERS: Medium and Large 1 under 2 yrs 1125-1425 lbs 3rd stage 1950.00-2300.00 per head

SOUTHEAST MISSOURI WEEKLY SUMMARY

(Jackson and Farmington)

Receipts: 1573 Week ago: 1949 Year ago: 1253
 Compared to last week, steers and heifers steady to 6.00 higher. Slaughter cows 2.00 to 3.00 higher. Slaughter bulls steady to 1.00 higher.

FEEDER STEERS:
 Medium and Large 1

300-400 lbs.	196.00-232.00
400-500 lbs.	179.00-207.00
500-600 lbs.	175.00-197.00
600-700 lbs.	162.00-185.00
700-800 lbs.	155.00-170.00
800-900 lbs.	141.00-165.00

FEEDER HEIFERS:
 Medium and Large 1

300-400 lbs.	160.00-188.00
400-500 lbs.	156.00-190.00
500-600 lbs.	150.00-180.00
600-700 lbs.	145.00-160.00
700-800 lbs.	137.00-152.50

SLAUGHTER BULLS: Yield Grade 1-2 1100-2270 lbs. 76.00-96.00; high dressing 98.00-104.00, low dressing ind 75.00

SLAUGHTER COWS: Breaking and Boning (75-85% lean) 58.00-70.00; high dressing 67.00-79.00. Lean (85-90% lean) 46.00-57.00

BRED COWS: Medium and Large 2 2-8 yrs 1020-1355 lbs 1st to 3rd stage 675.00-1085.00 per head

COW & CALF PAIRS: Medium and Large 2 2-8 yrs 1100-1250 lbs with baby to 300 lb calves 1300.00-1475.00 per pair

EAST CENTRAL MISSOURI WEEKLY SUMMARY

(Cuba, Vienna)

Receipts: 3852 Week ago: 1912 Year ago: 3114
 Compared to last week, steers and heifers steady to 7.00 higher, several heifers 400-500 lbs 10.00 to 15.00 higher. Slaughter cows uneven from 4.00 lower to 2.00 higher.

FEEDER STEERS:
 Medium and Large 1

400-500 lbs.	210.00-232.00
500-600 lbs.	190.00-222.00
600-700 lbs.	172.00-198.00
700-800 lbs.	168.00-181.00
800-850 lbs.	166.50-176.00

FEEDER HEIFERS:
 Medium and Large 1

400-500 lbs.	180.00-209.00
500-600 lbs.	166.00-199.00
600-700 lbs.	160.00-178.25
700-800 lbs.	160.00-167.25

SLAUGHTER BULLS: Yield Grade 1-2 1310-2255 lbs 89.50-104.00; low dressing 65.00-89.00

SLAUGHTER COWS: Breaking and Boning, (70-85% lean) 70.00-79.00; high dressing 78.00-87.00; low dressing 64.00-71.50. Lean (85-90%) 60.00-72.50

BRED COWS: Medium and Large 1-2 3 hd 2-8 yrs 930-1220 lbs 2nd stage 1000.00-1200.00 per head

COW & CALF PAIRS: Medium and Large 1-2 5-8 yrs 925-1085 lbs with 150-300 lb calves 1200.00-1460.00 per pair

NORTHWEST MISSOURI WEEKLY SUMMARY

(Tina)

Receipts: 2508 Week ago: 1883
 Compared to last week, steers mostly steady with 600 and 700 lbs sharply higher. Heifers 2.00 to 4.00 higher. Slaughter cows not well tested.

FEEDER STEERS:
 Medium and Large 1

300-400 lbs.	217.50-231.00
400-500 lbs.	200.00-227.00
500-600 lbs.	195.00-217.50
600-700 lbs.	181.00-196.00
700-800 lbs.	170.00-183.00
800-850 lbs.	174.50-179.25

FEEDER HEIFERS:
 Medium and Large 1

300-400 lbs.	174.00-185.00
400-500 lbs.	173.00-186.50
500-600 lbs.	170.00-185.50
600-650 lbs.	167.00-177.00
Pkg 752 lbs.	155.00
60 hd fancy 900 lbs	165.50

SLAUGHTER BULLS: Yield Grade 1-2 955-1800 lbs 90.00-100.00, few low dressing 70.00-77.00

SLAUGHTER COWS: Breaking and Boning, (70-85% lean) 62.50-77.00; high dressing 70.00-85.00. Lean (85-90%) 48.00-57.00

BRED COWS: Medium and Large 2 2-8yrs 965-995 lbs 2nd to 3rd stage 850.00-860.00 per head

COW & CALF PAIRS: Scarce

AFTERNOON NATIONAL SLAUGHTER CATTLE REVIEW

01/13/2023

So far for Friday in the Southern Plains and Nebraska negotiated cash trade has been slow to moderate with moderate demand. In the Southern Plains and Nebraska, compared to last week, the bulk of live purchase traded 1.00 lower at 156.00, a light test was note in Nebraska. In Nebraska, compared to the last dressed purchase market on Thursday, dressed traded steady from 250.00-252.00, with a light test. In the Western Cornbelt negotiated cash trade has been limited on light demand. Thursday was the last reported live purchase market with live from 157.00-159.00. Not enough dressed purchases for a market test. Last week dressed purchases traded at 252.00.

Negotiated Cash Sales:					
Confirmed:	23,513	Week Ago:	13,602	Year Ago:	3,848
Week to date:	66,073	Week Ago:	67,839	Year Ago:	59,263

Live Basis	Steers	Heifers
Over 80% Choice	155.00-159.00, avg 156.51	156.00-157.00, avg 156.06
65-80% Choice	155.00-156.00, avg 155.85	155.00-156.00, avg 155.87
35-65% Choice	156.00	-
0-35% Choice	-	-
Total All Grades	155.00-159.00, avg 156.18	155.00-157.00, avg 156.02
Dressed Basis		
Over 80% Choice	250.00-252.00, avg 251.63	250.00-252.00, avg 250.57
65-80% Choice	250.00	250.00
35-65% Choice	250.00	-
0-35% Choice	-	-
Total All Grades	250.00-252.00, avg 251.47	250.00-252.00, avg 250.52

WEEKLY COMMODITY FUTURES TRENDS

Compared to last week, Live Cattle 0.23 to 1.03 higher, Lean Hogs 0.20 to 2.38 lower, Feeder Cattle 1.45 to 2.78 lower and Aug 0.10 lower.

Daily Futures Closes

	Mon.	Tues.	Wed.	Thu.	Fri.
Cattle					
Feb	157.75	157.75	157.75	157.55	157.72
Apr	161.52	161.65	161.32	160.92	160.90
Jun	157.45	157.50	157.32	156.92	157.07
Aug	157.52	157.62	157.45	157.00	157.40
Oct	161.95	162.07	161.85	161.60	161.80
Lean Hogs					
Feb	80.80	79.80	79.30	78.75	78.65
Apr	90.80	89.52	88.40	87.17	87.27
May	97.75	96.22	95.65	95.10	95.15
Jun	106.45	105.30	104.25	103.87	103.87
Jul	107.90	106.90	105.80	106.05	105.77
Fdr Cat					
Jan	183.62	184.30	183.12	182.12	181.25
Mar	186.30	186.50	185.55	184.27	182.87
Apr	190.62	190.52	189.57	188.40	187.05
May	194.50	194.20	193.12	192.35	191.07
Aug	205.10	205.15	204.90	204.90	204.02
Milk					
Jan	19.70	19.53	19.58	19.52	19.46
Feb	19.15	19.10	19.29	18.78	18.59
Mar	18.71	18.67	18.63	18.40	18.29

WEEKLY COMMODITY GRAIN FUTURES TRENDS

Compared to last week, Soybeans 0.11 to 0.37 higher, Wheat steady to 0.04 lower, Corn 0.07 to 0.21 higher, KC Wheat 0.11 to 0.14 higher, Soybean Meal 1.50 to 9.90 higher, except March 1.30 lower.

Daily Grain Futures Closes

	Mon.	Tues.	Wed.	Thu.	Fri.
Soybeans					
Jan	1503 1/2	1510	1515	1529 1/2	1538 1/4
Mar	1488 1/2	1485	1493	1518 1/2	1527 3/4
May	1493 1/2	1489 1/4	1496 1/2	1519 1/4	1527 1/4
Jul	1495 3/4	1491 1/2	1497 3/4	1518 1/2	1525
Aug	1472	1468	1470 3/4	1486 3/4	1489 3/4
Wheat					
Mar	741 1/2	731	740	742 3/4	743 3/4
May	750	739 1/2	748 1/4	750 3/4	752
Jul	755 1/4	744 1/4	752 1/4	754 1/4	753 3/4
Sep	763 1/4	752 1/2	760 1/4	762	760 3/4
Dec	776 1/2	766 1/4	773 3/4	775 3/4	774 3/4
Corn					
Mar	652 3/4	655	656	671	675
May	653	654 1/2	655 1/4	669 1/2	673 3/4
Jul	647 1/4	648	648 1/2	661 1/2	663 3/4
Sep	605 1/2	605 1/4	605 1/2	613	614 1/4
Dec	590 1/4	589 1/4	589 1/4	596	598 1/2
KC Wheat					
Mar	828 1/2	811 3/4	822 1/4	835	843 3/4
May	825 1/4	809	819 1/4	831 1/2	840 1/4
Jul	822 1/2	806 3/4	816 1/2	827 1/2	835
Sep	824	808 1/2	818 1/4	829 1/4	837
Dec	828 1/2	814	823 1/4	834 1/2	843 1/4
SB Meal					
Jan	496.70	500.90	505.00	513.00	513.00
Mar	470.30	468.90	474.60	481.30	476.30
May	454.30	453.80	459.20	466.10	462.20
Jul	445.30	445.20	450.30	456.90	455.10
Aug	435.20	435.10	439.40	444.70	443.00

MISSOURI GRAIN WEEKLY TRENDS

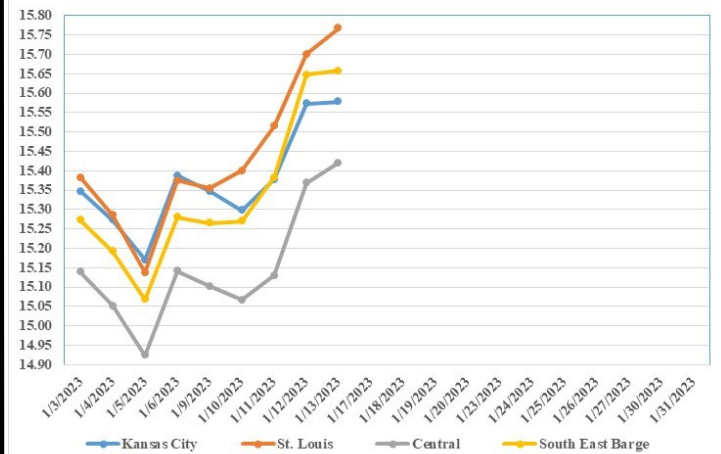
Compared to last week, Soybeans 0.06 to 0.43 higher, Wheat steady to 0.01 higher, Corn 0.19 to 0.25 higher, Sorghum 0.21 to 0.26 higher.

Area	#1 Soybeans	#2 Soft Wheat	#2 Corn	#2 Grain Sorghum
Kansas City				
Friday**	15.28-15.43	7.74	6.94-7.06	6.59
Monday	15.24-15.39	7.72	6.93-7.05	6.58
Tuesday	15.20-15.35	7.61	6.95-7.07	6.60
Wednesday	15.28-15.43	7.70	6.96-7.08	6.61
Thursday	15.54-15.69	7.73	7.11-7.23	6.76
Friday	15.43-15.73	7.74	7.15-7.25	6.80
St. Louis				
Friday**	15.37-15.39	7.29-7.79	6.74-6.79	6.84
Monday	15.34-15.38	7.27-7.77	6.73-6.78	6.83
Tuesday	15.40	7.16-7.66	6.80-6.82	6.85
Wednesday	15.51-15.52	7.25-7.75	6.85-6.87	6.86
Thursday	15.70-15.71	7.28-7.78	6.97-6.99	7.06
Friday	15.74-15.80	7.29-7.79	6.99-7.01	7.10
Central				
Friday**	15.08-15.18	7.04-7.24	6.84-6.89	—
Monday	15.04-15.14	7.02-7.22	6.83-6.88	—
Tuesday	15.00-15.10	6.91-7.11	6.85-6.90	—
Wednesday	15.08-15.18	7.00-7.20	6.86-6.91	—
Thursday	15.34-15.39	7.03-7.23	7.01-7.06	—
Friday	15.36-15.48	7.04-7.24	7.05-7.10	—
S.E. MO				
Friday**	15.22-15.35	—	6.62-6.84	—
Monday	15.21-15.31	—	6.68-6.81	—
Tuesday	15.21-15.30	—	6.70-6.83	—
Wednesday	15.29-15.45	—	6.71-6.84	—
Thursday	15.57-15.74	—	6.86-6.99	—
Friday	15.58-15.78	—	6.85-6.97	—

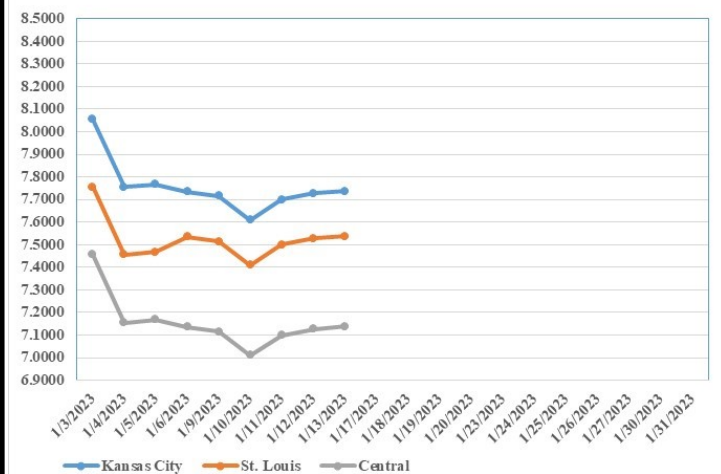
(PRICES PER BUSHEL) *NEW CROP **PREVIOUS WEEK'S PRICES
*Bids calculated using Kansas City, St. Louis, and St. Joseph bids

MONTHLY GRAIN CROP

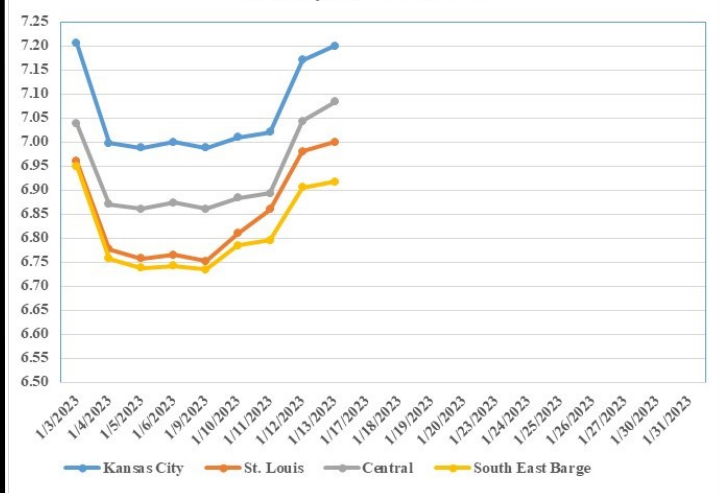
January 2023 Soybean Bids



January 2023 Wheat Bids



January 2023 Corn Bids



*Axis value ranges may be updated to reflect data points.

WHOLESALE FEEDSTUFFS PRICES 01/13/2023
(DOLLARS PER TON-BULK BASIS)

Area	Soybean Hulls	Soybean Meal 46.5-48%	Corn Gluten Pellets 21%	Wheat Middlings
Kansas City	230.00	484.80	309.00	285.33
St. Louis	n/a	n/a	295.00	62.50

GRAIN STOCKS 01/12/23

Corn stored in all positions on December 1, 2022 totaled 10.8 billion bushels, down 7 percent from December 1, 2021. Of the total stocks, 6.75 billion bushels are stored on farms, down 7 percent from a year earlier. Off-farm stocks, at 4.06 billion bushels, are down 8 percent from a year ago. The September - November 2022 indicated disappearance is 4.30 billion bushels, compared with 4.67 billion bushels during the same period last year.

Soybeans stored in all positions on December 1, 2022 totaled 3.02 billion bushels, down 4 percent from December 1, 2021. Soybean stocks stored on farms totaled 1.48 billion bushels, down 3 percent from a year ago. Off-farm stocks, at 1.55 billion bushels, are down 4 percent from last December. Indicated disappearance for September - November 2022 totaled 1.53 billion bushels, down 4 percent from the same period a year earlier.

All wheat stored in all positions on December 1, 2022 totaled 1.28 billion bushels, down 7 percent from a year ago. On-farm stocks are estimated at 362 million bushels, up 32 percent from last December. Off-farm stocks, at 918 million bushels, are down 17 percent from a year ago. The September - November 2022 indicated disappearance is 498 million bushels, 26 percent above the same period a year earlier.

WINTER WHEAT 01/12/23

Winter wheat seeded area for 2023 is expected to total 37.0 million acres, up 11 percent from 2022. Approximate class acreage breakdowns are: Hard Red Winter, 25.3 million; Soft Red Winter, 7.90 million; and White Winter, 3.73 million.

WASDE 01/12/23

OILSEEDS: U.S. oilseed production for 2022/23 is estimated at 126.0 million tons, down 2.0 million from the previous report on smaller soybean, sunflower, canola, and peanut crops. Soybean production is estimated at 4.276 billion bushels, down 69 million led by reductions for Missouri, Indiana, Illinois, and Kansas. Harvested area is estimated at 86.3 million acres, down 0.3 million from the previous report. Yield is estimated at 49.5 bushels per acre, down 0.6 bushels. The soybean export forecast is reduced 55 million bushels to 2.0 billion, reflecting lower supplies, reduced import demand for China, and a higher export forecast for Brazil. With lower supplies only partly offset by reduced exports, ending stocks are projected at 210 million bushels, down 10 million from the previous forecast.

COARSE GRAINS: This month's 2022/23 U.S. corn outlook is for reduced production, food, seed, and industrial use (FSI), feed and residual use, exports, and ending stocks. Corn production is estimated at 13.730 billion bushels, down 200 million as an increase in yield is more than offset by a 1.6 million acre cut to harvested area. Total corn use is reduced 185 million bushels to 13.915 billion. Exports are reduced 150 million bushels to 1.925 billion, reflecting the slow pace of shipments through December, and the lowest level of outstanding sales as of early January since the 2019/20 marketing year. FSI use is lowered 10 million bushels, with reductions in corn used for starch and glucose and dextrose. Feed and residual use is down 25 million bushels to 5.275 billion, based on indicated disappearance during the September-November quarter as reflected by the Grain Stocks report. With supply falling more than use, 2022/23 corn stocks are lowered 15 million bushels. The season-average corn price received by producers is unchanged at \$6.70 per bushel.

MISSOURI WEEKLY HAY SUMMARY 01/13/2023

Aside from a freak snow storm in the central part of the state early Thursday morning dropping a good 3 inches of heavy wet snow, weather conditions have been mild and temperatures have been above average on most days for the first week and a half of the New Year. Hay activity remains good, although livestock owners are counting bales and trying not to buy any more than they think they absolutely have to have to get through the remainder of feeding season. The supply of hay is light to moderate, demand is moderate, and prices mostly steady. The Missouri Department of Agriculture has a hay directory visit <http://mda.mo.gov/abd/haydirectory/> for listings of hay <http://agebb.missouri.edu/haylst/>
Alfalfa - Supreme 250.00-300.00, small square 10.00-15.00 per bale
Alfalfa - Premium 180.00-250.00
Alfalfa - Good 150.00-180.00, small square 5.00-9.00 per bale
Alfalfa - Fair 125.00-150.00
Alfalfa/grass mix - Good/Premium small square 5.00-9.00 per bale
Mixed grass - Good/Premium 125.00-175.00
Mixed grass - Fair/Good 100.00-150.00, small square 5.00-8.00 per bale
Mixed grass - Fair 50.00-85.00 per large round bale
Con stalk - 35.00 per round bale
Wheat straw - 4.00-7.00 per small square bale

Please Note: The above volumes (tonnage, acres, and bales) listed on this USDA LPGMN report are for confirmed trades only, it does not include estimated volume (tonnage) for bids or offers to the trade.

The current hay directory can be found at:

<https://apps.mda.mo.gov/HayDirectory>.

List your hay for sale at:

<https://agmarketnews.mo.gov/hay-directory/hay-listing-online-form#no-back>

MISSOURI WEEKLY SHEEP/GOAT AUCTION SUMMARY

01/16/2023

Receipts: 2809 Week Ago: 685 Last Year: 629

SHEEP: Feeder Lambs: Medium and Large 2 pkg 52 lbs 170.00. Hair Small and Medium 1-2 30-50 lbs 275.00-305.00, fancy 350.00. Small and Medium 2 40-55 lbs 227.50-262.50. Slaughter Lambs: Hair Choice and Prime 1-3 50-70 lbs 260.00-315.00; 70-90 lbs 210.00-255.00, fancy 315.00. Choice 1-2 60-70 lbs 230.00-260.00; 70-90 lbs 177.00-215.00. Choice 1-3 50-70 lbs 220.00-257.50; 70-95 lbs 160.00-212.50. Ewes: Utility and Good 1-2 165-210 lbs 74.00-77.00. Utility 1-2 pkg 138 lbs 61.00. Hair Utility and Good 1-3 95-125 lbs 100.00-112.50. Replacement Ewes hair Small and Medium 1-2 1-2 yrs win 85-120 lbs 225.00-240.00 per head 2-4 yrs win 95-150 lbs 240.00-300.00 per head.

GOATS: Feeder Kids: Selection 2 30-40 lbs 252.00-310.00; 40-50 lbs 237.50-300.00. Selection 3 4-50 lbs 200.00-220.00. Slaughter Kids: Selection 1 50-75 lbs 280.00-310.00. Selection 2 50-80 lbs 250.00-290.00; pkg 94 lbs 220.00. Does: Selection 1-2 73-125 lbs 142.50-190.00. Billies Selection 1-2 90-150 lbs 200.00-210.00. Wethers Selection 1-2 70-105 lbs 200.00-250.00. Replacement Does: Selection 1-2 1-4 yrs exposed or bred 70-96 lbs 140.00 per head.

Explanatory Notes: Stage - Represents estimated lambing/kidding period (Open, Exp=exposed, Bred, Fall = Sep-Nov, Win = Dec-Feb, Spr = Mar-May, Sum=Jun-Aug; w/s = woolled and shorn; /hd= per head; All price CWT unless otherwise noted.

MISSOURI DROUGHT MONITOR 01/12/2023

Date	None	D0	D1	D2	D3	D4
01/10/23	41.44	49.68	7.27	1.61	0	0
01/03/23	50.31	37.18	10.90	1.61	0	0
01/11/22	62.89	36.68	0.43	0	0	0

Reflects percentage of Missouri impacted by drought. D0 Abnormally Dry; D1 Moderate Drought; D2 Severe Drought; D3 Extreme Drought; D4 Exceptional Drought

NATIONAL DIRECT DELIVERED FEEDER PIG REPORT

01/13/2023 Receipts: 117,092 Week ago: 91,714 Year Ago: 108,970
Early weaned pigs 5.00 per head higher, feeder pigs 3.00 per head higher.
Early weaned pigs 10-12 lbs. basis:
Cash 52,506 head 54.00-75.00, weighted average 68.30
Formula 54,986 head 48.00-72.00, weighted average 59.69
Feeder pigs 40 pounds basis:
Cash 9,600 head 79.00-87.00, weighted average 81.81

NATIONAL DAILY DIRECT PRIOR DAY HOG REPORTS FOR 01/13/23

BARROWS AND GILTS (Carcass Basis): 5,535 head
Base Carcass Price 67.00-74.50, weighted average 72.59

SOWS (Live Basis): 7,169 head
300-500 lbs. 16.00-51.50
Over 500 lbs. 27.00-52.00

MISSOURI WEEKLY DIRECT SLAUGHTER CATTLE REPORT 01/13/2023

Weekly Receipts: 360 Week ago: 320 Year ago: 400
Trade as of Friday morning: trade is light as many producers are passing steady bids. Flat dressed sales steady and grid dressed sales steady.

LIVE STEERS & HEIFERS: No sales reported
DRESSED STEERS & HEIFERS: 3 loads Fri 252.00 flat

GRADE AND WEIGHT (Grid): 3 loads Thu afternoon 260.00; 2 loads Fri 260.00

Click here for the current [National Crop Progress](#)
Click here for the current [Missouri Crop Progress](#)