

# Weekly Market Summary

Published by:  
**Missouri Department of Agriculture**  
**Ag Business Development Division**  
**Market News Program**



Chris Chinn, Director  
 Jill Wood, Division Director  
 Tony Hancock, Editor  
[agmarketnews.mo.gov](http://www.ams.usda.gov/marketnews.htm)  
<http://www.ams.usda.gov/marketnews.htm>

Michael L. Parson, Governor

Volume XLIII, Number 10 ♦ P.O. Box 630, Jefferson City, MO 65102 ♦ (573) 751-4211 ♦ Monday, March 13, 2023

## MISSOURI WEEKLY FEEDER CATTLE WEIGHTED AVERAGE REPORT

Receipts: 28,530 Week ago: 25,071 Year ago: 30,443  
 Steers and Heifers Medium and Large 1—Weighted average weights and prices

STEERS: Medium and Large 1

328 lbs. 256.95 525 lbs. 240.52 722 lbs. 199.74 933 lbs. 180.81  
 376 lbs. 257.30 569 lbs. 235.29 761 lbs. 196.97 974 lbs. 174.05  
 426 lbs. 254.66 624 lbs. 221.14 824 lbs. 186.04  
 478 lbs. 244.96 672 lbs. 206.56 875 lbs. 187.82

HEIFERS: Medium and Large 1

329 lbs. 225.64 523 lbs. 210.99 720 lbs. 184.13 931 lbs. 167.28  
 376 lbs. 227.19 570 lbs. 203.54 767 lbs. 178.62  
 425 lbs. 223.54 623 lbs. 192.84 821 lbs. 170.41  
 472 lbs. 219.18 667 lbs. 190.71 885 lbs. 170.00

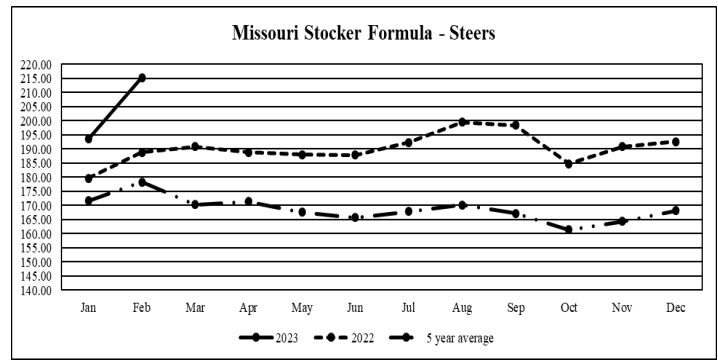
### Missouri Steer (Heifer) Stocker Formula for 03/13/2023

Monday's Missouri Stocker Formula consists of **6311 (5909)** head with a weighted average weight of **532.82 (525.90)** lbs. and a price value of **231.45 (202.07)**, 3.85 higher (6.92 higher) than last week.

This a rolling seven day calculated weighted value which combines all Feeder Steers reported by MDA/USDA Market News Service weighing from 400-649 lbs. in the Medium and Large 1 and Medium and Large 1-2 frame and muscle classifications, including all comment cattle except Brahman X. Heifer values are in parentheses.

### Missouri Weekly Cattle Auction Summary 03/13/2023

Compared to last week, feeders sold steady to 5.00 higher, with instances of 10.00 higher on heifers under 700 lbs. The supply of feeders was moderate and demand was good to very good. More rain fell around the state keeping all the mud fully hydrated. Some cold weather predicted over the next week could set things back a bit if there happens to be any heavy frost with it. Despite that worry the huge replenishment of moisture should bring plenty of grass for grazing as soon as some sun and a bit warmer temperatures settle in. Buyers continue to fill keep auction barns exciting as prices continue to climb. Slaughter cattle are getting very close to breaking records. Feeder prices although quite exciting still have quite a ways to climb if they intend to do the same. Just for reference weighted average prices are about 40.00 below the records set back in 2014-15 and corn prices are not quite but almost double what they were then. Some highlights from some load or multi load drafts this week included 277 head of 561 lb. steers as Ozarks Regional Stockyards which sold at 241.00, 66 head of 758 lb. steers sold at Kingsville Livestock Auction for 202.75, and 4 loads of 860-880 lb. steers sold at Unionville Livestock Market from 194.35-198.85. Boxed beef cutouts were lower for the week. Choice closed at 284.91, down 4.41 and select closed at 271.54, down 5.32 compared to last Friday. Negotiated feedlot sales as of Friday afternoon totaled just over 63K head. Live sales were reported from 165.00-166.00 and dressed sales 265.00-268.50. The Missouri Stocker Formula consist of 6311 head with a weighted average weight of 532.82 lbs. and a price value of 231.45, 3.85 higher than last week. The steer/heifer spread is 39.38.

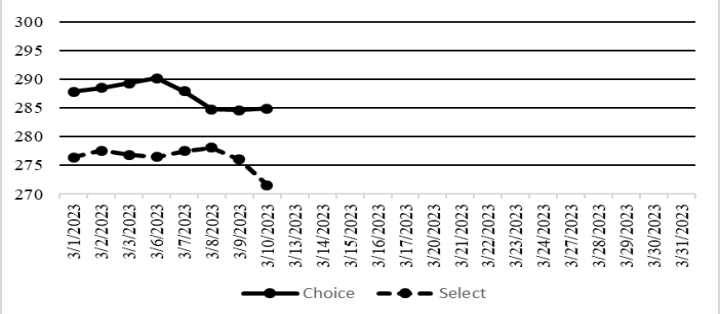


\*Graph is updated the first Monday of each month.

### NATIONAL BOXED BEEF CUTOUT/BOXED BEEF CUTS

<u>DATE</u>	<u>CHOICE</u>	<u>SELECT</u>	<u>TOTAL LOADS</u>
03/06	290.20	276.47	94
03/07	287.93	277.49	105
03/08	284.78	278.12	165
03/09	284.60	276.05	87
03/10	284.91	271.54	96
5 Day Simple Average	286.48	275.93	

### Boxed Beef Cuts March 2022



\*Axis value ranges may be updated to reflect data points.

### WEEKLY LIVESTOCK SLAUGHTER 03/11/23

	<u>CATTLE</u>	<u>HOGS</u>	<u>SHEEP</u>
Week to Date:	634,000	2,497,000	36,000
Last Week:	629,000	2,512,000	35,000
Last Year:	637,000	2,472,000	33,000

The Weekly Market Summary, as well as historical summaries, are available on our website <https://agmarketnews.mo.gov/summaries>  
 Market News Hotline: 1-573-522-9244

**SOUTHWEST MISSOURI WEEKLY SUMMARY**

(Joplin and Springfield)

Receipts: 11,394 Week ago: 9,377 Year ago: 12,457

Compared to last week, feeder calves 5.00 to 10.00 higher, heavier weights steady to 5.00 higher, except some heifers late week spots 4.00 lower. Slaughter cows and bulls early week steady to 5.00 lower and late week steady to 2.00 higher.

**FEEDER STEERS:**  
Medium and Large 1

300-400 lbs.	243.00-265.00
400-500 lbs.	233.00-263.00
500-600 lbs.	225.00-256.00
600-700 lbs.	199.00-228.00
700-800 lbs.	193.00-208.00
800-900 lbs.	178.00-185.00
900-950 lbs.	173.00-173.25

**FEEDER HEIFERS:**  
Medium and Large 1

300-400 lbs.	215.00-245.00
400-500 lbs.	198.00-235.00
500-600 lbs.	187.00-222.00
600-700 lbs.	185.00-201.00
700-800 lbs.	175.25-186.00
17 hd 885 lbs.	170.00

**FEEDER HOLSTEIN STEERS**  
Large 3

350-400 lbs.	143.00-145.00
450-500 lbs.	131.00-154.00
500-600 lbs.	130.00-140.00
600-700 lbs.	130.00-148.00
700-800 lbs.	130.00-147.00
800-900 lbs.	133.00-144.50

**SLAUGHTER COWS:** Breaking and Boning (70-85% lean) 80.00-96.00, high dressing 93.00-105.00; low dressing 76.00-85.00. Lean (85-90%) 70.00-85.50

**SLAUGHTER BULLS:** Yield Grade 1-2 1235-2505 lbs. 101.00-117.00; high dressing 114.50-131.00; low dressing 88.00-102.00

**BRED COWS:** Medium and Large 1 2-8 yrs 1210-1390 lbs 2nd to 3rd stage 1450.00-1900.00. Medium and Large 1-2 2-8 yrs 1012-1405 lbs 2nd to 3rd stage 1000.00-1675.00, 1st stage 1050.00-1350.00; >8 yrs 1100-1282 lbs 2nd to 3rd stage 930.00-1550.00 per head

**BRED HEIFERS:** Medium and Large 1 <2 yrs 908-1125 lbs 2nd to 3rd stage 1575.00-2200.00 per head

**COW & CALF PAIRS:** Medium and Large 1-2 2-4 yrs 980-1080 lbs with 150-300 lb calves 2000.00-2100.00; 2-8 yrs 970-1485 lbs few rebred 1st stage with <150 to >300 lb calves 1450.00-2025.00; >8 yrs 973-1087 lbs with 150-300 lb calves 1250.00-1500.00 per pair

**SOUTH CENTRAL MISSOURI WEEKLY SUMMARY**

(West Plains, Phillipsburg)

Receipts: 4,142 Week ago: 4,714 Year Ago: 5,802

Compared to last week, feeder calves 6.00 to 12.00 higher, spots 16.00 higher and yearlings not well tested, but undertones higher. Slaughter cows 3.00 to 4.00 higher. Slaughter bulls steady.

**FEEDER STEERS:**  
Medium and Large 1

300-400 lbs.	242.50-264.00
400-500 lbs.	240.00-270.00
500-600 lbs.	222.50-249.00
600-700 lbs.	195.00-229.00
700-800 lbs.	188.00-206.00
800-850 lbs.	186.00-188.00

**FEEDER HEIFERS:**  
Medium and Large 1

300-400 lbs.	210.00-229.00
400-500 lbs.	202.00-224.00
500-600 lbs.	188.00-210.00
600-700 lbs.	175.00-183.00
700-750 lbs.	170.00-171.50
13 hd 806 lbs.	168.00

**FEEDER HOLSTEIN STEERS**  
Large 3

Scarce Scarce

**SLAUGHTER COWS:** Breaking and Boning (70-85% lean) 83.00-95.00, high dressing 95.00-109.00; low dressing 68.00-84.00. Lean (85-90%) 70.00-83.00

**SLAUGHTER BULLS:** Yield Grade 1-2 1300-2325 lbs. 100.00-115.00; high dressing 118.00-130.00; low dressing 81.00-100.00

**BRED COWS:** Medium and Large 1-2 2-8 yrs 1080-1350 lbs 1st to 3rd stage 1100.00-1550.00; >8 yrs 1135-1370 lbs 2nd to 3rd stage 1050.00-1450.00 per head

**BRED HEIFERS:** Medium and Large 1-2 <2 yrs 785-1000 lbs 1st to 3rd stage 900.00-1250.00 per head

**COW & CALF PAIRS:** Medium and Large 1-2 2-8 yrs 1075-1250 lbs with 150 to >300 lb calves 1500.00-2000.00; couple >8 yrs 1205 lbs with 150-300 lb calves 1500.00 per pair

**WEST CENTRAL MISSOURI WEEKLY SUMMARY**

(Kingsville, Windsor, Butler)

Receipts: 4,677 Week ago: 5,968 Year ago: 5,324

Compared to last week, feeders sold 3.00 to 8.00 higher. Slaughter cows steady to 3.00 higher.

**FEEDER STEERS:**  
Medium and Large 1

400-500 lbs.	233.00-274.00
500-600 lbs.	219.00-257.50
600-700 lbs.	201.25-230.00
700-800 lbs.	189.50-206.00
800-900 lbs.	177.25-193.00

**FEEDER HEIFERS:**  
Medium and Large 1

400-500 lbs.	211.00-246.00
500-600 lbs.	189.00-219.00
600-700 lbs.	179.00-202.75
700-800 lbs.	169.25-193.00
800-850 lbs.	166.00-172.75

**SLAUGHTER BULLS:** Yield Grade 1-2 1215-2540 lbs 99.50-127.00; high dressing 126.00-135.00; low dressing 87.50-105.00

**SLAUGHTER COWS:** Breaking and Boning (70-85% lean) 88.00-102.50, high dressing 97.00-110.00; low dressing 78.00-91.00. Lean (85-90%) 74.00-91.50

**BRED COWS:** Medium and Large 1-2 2-8 yrs 984-1360 lbs 1st to 3rd stage 1050.00-1460.00 per head

**COW & CALF PAIRS:** Medium and Large 1-2 5-8 yrs 950-1275 lbs with 150-300 lb calves 1200.00-1400.00 per pair

**NORTHEAST MISSOURI WEEKLY SUMMARY**

(Bowling Green, Kingdom City, Palmyra)

Receipts: 4799 Week ago: 3,204 Year ago: 6747

Compared to last week, steers sold steady to 5.00 higher, heifers sold steady to firm with 400-500 lbs 5.00-10.00 higher. Slaughter cows sold firm to 5.00 higher.

**FEEDER STEERS:**  
Medium and Large 1

400-500 lbs.	231.00-259.00
500-600 lbs.	218.00-251.00
600-700 lbs.	199.00-229.00
700-800 lbs.	186.50-203.00
800-900 lbs.	184.10-198.00
900-1000 lbs.	176.00-181.25

**FEEDER HEIFERS:**  
Medium and Large 1

400-500 lbs.	211.00-238.00
500-600 lbs.	190.00-222.00
600-650 lbs.	184.00-203.75
700-750 lbs.	177.00-185.00
900-950 lbs.	167.75-168.00

**SLAUGHTER BULLS:** Yield Grade 1-2 1345-2115 lbs 96.00-128.50; high dressing 109.00-133.50, low dressing few 94.00-105.00

**SLAUGHTER COWS:** Breaking and Boning, (70-85% lean) 84.00-98.50; high dressing 92.00-108.00; low dressing 70.00-88.00. Lean (85-90%) 75.00-85.00

**SLAUGHTER STEERS:** Choice 2 -3 164.50-170.00. Select and Choice 1-3 160.00-163.00.

**SLAUGHTER HEIFERS:** Choice and Prime 2-4 174.00-180.00. Choice 2-3 166.00-168.00 Select and Choice 2-3 160.00-163.00.

**BRED COWS:** Scarce

**COW/CALF PAIRS:** Scarce

**NORTH CENTRAL MISSOURI WEEKLY SUMMARY**

(Macon, Unionville, Green City, New Cambria)

Receipts: 2,866 Week ago: 2,854 Year ago: 2,228

Compared to two weeks ago, steers 7.00-10.00 higher, heifers 8.00-15.00 higher. Slaughter cows firm to 5.00 higher.

\*Some sale barns on a bi-weekly schedule and may not have a sale each week.

**FEEDER STEERS:**  
Medium and Large 1

400-500 lbs.	239.00-258.00
500-600 lbs.	217.50-256.00
600-700 lbs.	202.00-228.50
700-800 lbs.	196.25-208.25
800-900 lbs.	175.75-198.85

**FEEDER HEIFERS:**  
Medium and Large 1

400-500 lbs.	200.00-238.50
500-600 lbs.	190.00-218.50
600-700 lbs.	188.00-200.50
700-800 lbs.	173.10-185.85

**SLAUGHTER BULLS:** Yield Grade 1-2 1300-1920 lbs 99.00-109.00

**SLAUGHTER COWS:** Breaking and Boning, (70-85% lean) 80.00-91.50; high dressing 91.00-98.00. Lean (85-90%) 65.50-84.00

**BRED COWS:** Scarce

**BRED HEIFERS:** Scarce

**SOUTHEAST MISSOURI WEEKLY SUMMARY**

(Jackson and Farmington)

Receipts: 1,613 Week ago: 1,645 Year ago: 1,529  
 Compared to last week, steers and heifers uneven from 5.00 lower to 11.00 higher. Slaughter cows and bulls steady to 2.00 lower.

**FEEDER STEERS:**  
 Medium and Large 1

300-400 lbs.	234.00-265.00
400-500 lbs.	214.00-257.50
500-600 lbs.	202.00-234.00
600-700 lbs.	192.00-215.00
700-800 lbs.	169.00-187.00

**FEEDER HEIFERS:**  
 Medium and Large 1

300-400 lbs.	197.50-227.50
400-500 lbs.	195.00-225.00
500-600 lbs.	180.00-212.00
600-700 lbs.	168.00-190.00
700-800 lbs.	160.00-175.00

**SLAUGHTER BULLS:** Yield Grade 1-2 1050-1965 lbs. 85.00-102.50; high dressing 105.00-120.00

**SLAUGHTER COWS:** Breaking and Boning (75-85% lean) 72.00-84.50; high dressing 80.00-93.00. Lean (85-90% lean) 58.00-73.00

**BRED COWS:** Medium and Large 2 2-8 yrs 1040-1170 lbs 2nd to 3rd stage 1100.00-1450.00; couple >8 yrs 1085-1305 lbs 3rd stage 1200.00-1350.00 per head

**COW & CALF PAIRS:** Medium and Large 2 1000-1050 lbs with <150 to 300 lb calves 1000.00-1550.00 per pair

**EAST CENTRAL MISSOURI WEEKLY SUMMARY**

(Cuba, Vienna)

Receipts: 1,744 Week ago: 2,178 Year ago: 1,383  
 Compared to last week, steers 2.00 to 5.00 higher and heifers 2.00 to 10.00 higher. Slaughter cows steady to 3.00 higher.

**FEEDER STEERS:**  
 Medium and Large 1

300-400 lbs.	258.00-292.50
400-500 lbs.	235.00-280.00
500-600 lbs.	230.50-256.00
600-650 lbs.	209.50-229.00
700-750 lbs.	185.00-190.00
Pkg 803 lbs.	176.00

**FEEDER HEIFERS:**  
 Medium and Large 1

300-400 lbs.	221.00-246.00
400-500 lbs.	213.00-235.00
500-600 lbs.	195.00-223.00
600-700 lbs.	183.00-200.00
700-800 lbs.	175.00-179.00

**SLAUGHTER BULLS:** Yield Grade 1-2 1130-2145 lbs 103.00-116.00; high dressing 119.00-123.00; low dressing 68.00-101.00

**SLAUGHTER COWS:** Breaking and Boning, (70-85% lean) 85.50-95.50; high dressing 95.00-103.00; low dressing few 84.00. Lean (85-90%) 75.50-85.50

**BRED COWS:** Medium and Large 1-2 2-8 yrs 975-1310 lbs 2nd to 3rd stage 1200.00-1360.00; >8 yrs 1120-1200 lbs 2nd to 3rd stage 1200.00-1375.00 per head

**COW & CALF PAIRS:** Medium and Large 1-2 >8 yrs 1100-1125 lbs with 150-300 lb calves 1900.00-2000.00 per pair

**NORTHWEST MISSOURI WEEKLY SUMMARY**

(Tina)

Receipts: 2,276 Two Weeks ago: 3,111  
 Compared to two weeks ago, feeders under 650 lbs higher undertone on a light test, over 650 lbs steady to 3.00 higher, spots 6.00 to 9.00 higher on 700-800 lbs. Slaughter cows 9.00 to 11.00 higher. Slaughter bulls 5.00 to 6.00 higher.

**FEEDER STEERS:**  
 Medium and Large 1

400-500 lbs.	228.00-253.00
500-600 lbs.	230.00-246.25
600-700 lbs.	202.50-228.50
700-800 lbs.	191.00-204.50
41 874 lbs.fancy	184.85

**FEEDER HEIFERS:**  
 Medium and Large 1

400-500 lbs.	219.00-226.50
500-600 lbs.	193.00-224.50
600-700 lbs.	184.00-199.00
70 hd 728 lbs.	184.50
59 hd 844 lbs fancy	176.25

**SLAUGHTER BULLS:** Yield Grade 1-2 1020-2160 lbs 108.00-112.00; high dressing 118.00-123.50; couple low dressing 85.00-89.00

**SLAUGHTER COWS:** Breaking and Boning, (70-85% lean) 86.00-100.00; high dressing 95.00-106.00. Lean (85-90%) 77.00-83.50

**BRED COWS:** Scarce

**COW & CALF PAIRS:** Medium and Large 1

**AFTERNOON NATIONAL SLAUGHTER CATTLE REVIEW**

So far for Friday in Kansas, Nebraska and Western Cornbelt negotiated cash trading has been slow on moderate demand. In Kansas and Nebraska, compared to last week, the bulk of live purchases traded steady at 165.00. In Nebraska not enough dressed purchases for a market trend. The last reported dressed market was on Thursday from 265.00-268.50. In the Western Cornbelt, compared to last week, the bulk of live purchases traded steady to 1.00 higher from 165.00-166.00 and dressed purchases traded steady at 265.00. In the Texas Panhandle negotiated cash trading has been very limited on light demand. Not enough purchases for a full market trend. The last reported live purchase market was on Thursday at 165.00.

<b>Negotiated Cash Sales:</b>					
<b>Confirmed:</b>	30,799	<b>Week Ago:</b>	42,142	<b>Year Ago:</b>	1,247
<b>Week to date:</b>	63,279	<b>Week Ago:</b>	70,838	<b>Year Ago:</b>	82,557

<u>Live Basis</u>	<u>Steers</u>	<u>Heifers</u>
<b>Over 80% Choice</b>	164.00-167.50 avg 165.28	164.00-165.50 avg 164.94
<b>65-80% Choice</b>	164.00-165.00 avg 164.90	165.00-165.00 avg 165.00
<b>35-65% Choice</b>	165.00-165.00 avg 165.00	-
<b>0-35% Choice</b>	-	-
<b>Total All Grades</b>	164.00-167.50 avg 165.20	164.00-165.00 avg 164.95
<u>Dressed Basis</u>		
<b>Over 80% Choice</b>	264.00-265.00 avg 264.99	264.00-265.00 avg 264.95
<b>65-80% Choice</b>	265.00-265.00 avg 265.00	265.00-265.00 avg 265.00
<b>35-65% Choice</b>	-	-
<b>0-35% Choice</b>	-	-
<b>Total All Grades</b>	264.00-265.00 avg 264.99	264.00-265.00 avg 264.96

<u>All Beef Type Steers/Heifers</u>	<u>Head</u>	<u>Avg Wt</u>	<u>Price Range</u>	<u>Wtd Avg</u>
Live FOB	24,516	1427.9	164.00-167.50	165.10
Live Del	1,189	1419.8	166.00-168.00	167.71
Dressed Del	4,560	932.4	262.00-265.00	264.84
Dressed FOB	534	954.1	264.00-266.00	265.11

**WEEKLY COMMODITY FUTURES TRENDS**

Compared to last week, Live Cattle 0.50 to 2.02 lower, Lean Hogs 1.47 to 2.90 higher, Feeder Cattle 1.47 to 2.62 higher.

Daily Futures Closes

	Mon.	Tues.	Wed.	Thu.	Fri.
<b>Cattle</b>					
Apr	166.10	165.97	165.45	164.80	164.27
Jun	161.00	160.55	160.65	159.67	158.65
Aug	160.47	160.10	160.17	159.35	158.45
Oct	165.00	164.77	164.95	164.17	163.25
Dec	168.75	168.85	169.20	168.60	167.75
<b>Lean Hogs</b>					
Apr	83.47	84.80	85.75	85.07	87.45
May	93.05	92.95	93.17	92.75	94.92
Jun	100.62	100.07	100.27	100.45	102.77
Jul	102.97	102.60	102.67	102.75	104.90
Aug	103.75	103.55	103.42	103.47	105.25
<b>Fdr Cat</b>					
Mar	192.07	192.12	193.75	193.07	191.47
Apr	198.60	198.67	200.07	199.15	197.65
May	203.25	204.20	206.15	205.47	203.57
Aug	216.80	217.65	219.70	218.55	216.52
Sep	219.17	219.97	222.07	220.95	219.12
<b>Milk</b>					
Mar	17.78	17.70	17.68	17.76	17.71
Apr	17.62	17.61	17.51	17.75	17.70
May	17.90	17.84	17.75	17.99	17.85

**WEEKLY COMMODITY GRAIN FUTURES TRENDS**

Compared to last week, Soybeans 0.11 to 0.17 lower, Wheat 0.26 to 0.29 lower, Corn 0.14 to 0.22 lower, KC Wheat 0.11 to 0.23 lower, Soybean Meal Mar 0.70 higher, others 4.60 to 9.10 higher.

**Daily Grain Futures Closes**

	Mon.	Tues.	Wed.	Thu.	Fri.
<b>Soybeans</b>					
Mar	1541	1525 1/4	1526 3/4	1520	1513
May	1529	1515 1/2	1517 3/4	1510 3/4	1507
Jul	1516 3/4	1504 3/4	1506 1/4	1498 3/4	1494 3/4
Aug	1480 3/4	1471 1/4	1472	1463 1/2	1458
Sep	1410 1/2	1403 1/2	1403 3/4	1394 1/2	1390 1/2
<b>Wheat</b>					
Mar	682 1/2	684 3/4	674 1/2	653 1/2	666 3/4
May	695 1/4	698	687 1/2	665 3/4	679 1/4
Jul	703 1/2	706 1/2	697	677	690
Sep	714 1/2	717 1/2	707 3/4	689	701
Dec	731	733 1/2	723 1/2	705 1/4	717 1/4
<b>Corn</b>					
Mar	644 1/2	642	634 1/2	618 1/2	624 1/4
May	637	634 1/4	625 1/2	611 1/2	617 1/4
Jul	625 1/2	622 1/2	614	601 3/4	606 1/2
Sep	582 1/2	577 1/2	568 1/2	561 1/4	565 1/2
Dec	570	567	558	553 1/2	557 3/4
<b>KC Wheat</b>					
Mar	804	805 1/2	806 1/2	786 1/4	811 1/4
May	797 3/4	799 1/4	800 1/4	777 1/4	798 1/4
Jul	791 3/4	793 1/4	791	769	789
Sep	795 1/4	797	793 1/4	771 3/4	790 1/2
Dec	802 3/4	804 1/2	799	778	796 1/2
<b>SB Meal</b>					
Mar	507.90	501.50	498.40	498.90	498.80
May	493.40	487.80	485.70	486.90	485.90
Jul	482.70	478.90	476.90	477.90	477.20
Aug	467.70	465.90	464.40	465.30	465.50
Sep	449.10	449.50	448.20	449.20	450.40

**MISSOURI GRAIN WEEKLY TRENDS**

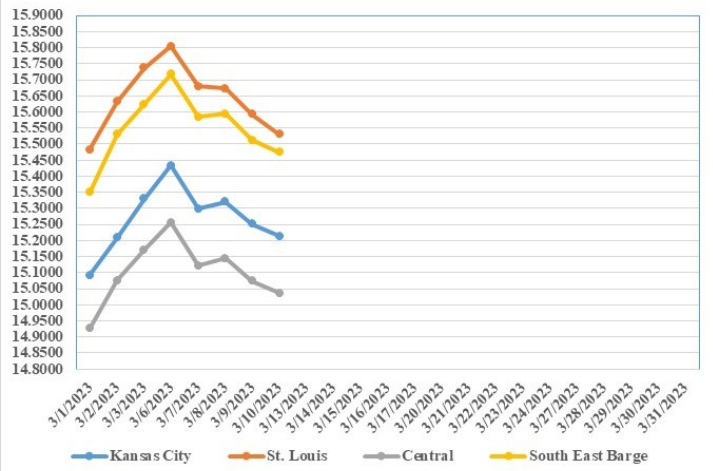
Compared to last week, Soybeans 0.12 to 0.22 lower, Wheat 0.29 to 0.30 lower, Corn 0.20 to 0.26 lower, Sorghum 0.18 to 0.23 lower.

Area	#1 Soybeans	#2 Soft Wheat	#2 Corn	#2 Grain Sorghum
<b>Kansas City</b>				
Friday**	15.19-15.49	7.25	6.60-6.75	6.45
Monday	15.29-15.59	7.11	6.57-6.72	6.42
Tuesday	15.16-15.46	7.14	6.54-6.69	6.39
Wednesday	15.17-15.47	7.03	6.45-6.60	6.35
Thursday	15.10-15.40	6.81	6.31-6.46	6.21
Friday	15.07-15.37	6.95	6.37-6.52	6.27
<b>St. Louis</b>				
Friday**	15.74	6.99	6.82-6.83	6.95-7.00
Monday	15.80-15.81	6.85	6.79-6.80	6.92-6.97
Tuesday	15.68-15.69	6.88	6.77	6.89-6.94
Wednesday	15.66-15.67	6.77	6.69-6.70	6.80-6.85
Thursday	15.57-15.60	6.55	6.54-6.56	6.66-6.71
Friday	15.52-15.54	6.69	6.57-6.61	6.72-6.77
<b>Central</b>				
Friday**	15.14-15.19	6.84	6.60-6.65	—
Monday	15.19-15.29	6.70	6.57-6.62	—
Tuesday	15.06-15.16	6.73	6.54-6.59	—
Wednesday	15.07-15.17	6.62	6.45-6.50	—
Thursday	15.00-15.10	6.40	6.31-6.36	—
Friday	14.97-15.07	6.54	6.37-6.42	—
<b>S.E. MO</b>				
Friday**	15.60-15.64	—	6.68-6.76	—
Monday	15.67-15.74	—	6.65-6.73	—
Tuesday	15.55-15.61	—	6.62-6.70	—
Wednesday	15.52-15.62	—	6.55-6.61	—
Thursday	15.46-15.55	—	6.41-6.47	—
Friday	15.38-15.57	—	6.47-6.57	—

(PRICES PER BUSHEL) \*NEW CROP \*\*PREVIOUS WEEK'S PRICES  
\*Bids calculated using Kansas City, St. Louis, and St. Joseph bids

**MONTHLY GRAIN CROP**

**March 2023 Soybean Bids**



**March 2023 Wheat Bids**



**March 2023 Corn Bids**



\*Axis value ranges may be updated to reflect data points.

**WHOLESALE FEEDSTUFFS PRICES  
(DOLLARS PER TON-BULK BASIS)**

Area	Soybean Hulls Pellets	Soybean Meal 46.5-48%	Corn Gluten Pellets 21%	Wheat Middlings
Kansas City	210.00	494.40	297.33	196.67
St. Louis	n/a	n/a	280.00	175.00

## WORLD AGRICULTURAL SUPPLY AND DEMAND ESTIMATES

**OILSEEDS:** U.S. soybean supply and use changes for 2022/23 include higher exports, lower crush, and reduced ending stocks compared with last month's report. Soybean exports are raised 25 million bushels to 2.02 billion based on higher-than-expected shipments through February. Soybean crush is reduced on a small reduction in domestic soybean meal disappearance combined with a higher extraction rate. With higher exports more than offsetting lower crush, ending stocks are reduced 15 million bushels to 210 million. If realized, ending stocks would be the lowest in seven years. With relatively strong domestic demand for soybean oil limiting export competitiveness, U.S. soybean oil exports are reduced 200 million pounds to a historically low 500 million. Higher domestic use and reduced production are offsetting, leaving soybean oil stocks unchanged this month. The U.S. season-average soybean price forecast for 2022/23 is unchanged at \$14.30 per bushel. The soybean meal price is forecast at \$465 per short ton, up 15 dollars. The soybean oil price is reduced 2 cents to 66.0 cents per pound.

**COARSE GRAINS:** This month's 2022/23 U.S. corn outlook is for lower exports and larger ending stocks. Exports are reduced 75 million bushels reflecting the poor pace of sales and shipments to date despite relatively competitive U.S. prices. With no other use changes, ending stocks are up 75 million bushels from last month. The season-average corn price received by producers is lowered 10 cents to \$6.60 per bushel based on reported prices to date.

**WHEAT:** The 2022/23 U.S. wheat supply and demand outlook is unchanged from last month. The projected season-average farm price remains \$9.00 per bushel.

### UNITED STATES AND CANADIAN CATTLE AND SHEEP

**All cattle and calves in the United States and Canada** combined totaled 101 million head on January 1, 2023, down 3 percent from the 104 million head on January 1, 2022. All cows and heifers that have calved inventory at 42.9 million head, down 3 percent from a year ago.

**All cattle and calves in the United States** as of January 1, 2023 totaled 89.3 million head, down 3 percent from the 92.1 million head on January 1, 2022. All cows and heifers that have calved inventory at 38.3 million head, down 3 percent from a year ago.

**All cattle and calves in Canada** as of January 1, 2022 totaled 11.3 million head, down 2 percent from the 11.5 million head on January 1, 2022. All cows and heifers that have calved inventory at 4.53 million head, down 2 percent from a year ago.

**All sheep and lambs in the United States and Canada** combined totaled 5.87 million head on January 1, 2023, down slightly from the 5.89 million head on January 1, 2022. Breeding sheep inventory at 4.29 million head, down 1 percent from a year ago. Market sheep and lambs totaled 1.58 million head, up 1 percent from last year.

**All sheep and lambs in the United States** as of January 1, 2023 totaled 5.02 million head, 1 percent below the 5.07 million head on January 1, 2022. Breeding sheep inventory at 3.67 million head, down 1 percent from a year ago. Market sheep and lambs totaled 1.36 million head, unchanged from last year.

**All sheep and lambs in Canada** as of January 1, 2023 totaled 854,400 head, up 3 percent from last year's number of 827,200 head. Breeding sheep inventory at 628,700 head, up 1 percent from last year. Market sheep and lambs totaled 225,700 head, up 11 percent from a year ago.

### MISSOURI WEEKLY HAY SUMMARY 03/09/23

Rolling up on Mid-March and signs of spring continue to show. Henbit is covering most of last year's crops fields now providing a pleasant shade of purple and the evenings are full of the sounds of the peeping tree frogs. Rains continue to fall making mud deep and trying to eliminate those last few areas making up 3 percent of the state that is hanging on the latest drought monitor. Still some hay sales taking place but business is definitely slowing with each passing day. The supply of hay is light, demand is moderate and prices are steady. The Missouri Department of Agriculture has a hay directory visit <http://mda.mo.gov/abd/haydirectory/> for listings of hay <http://agebb.missouri.edu/haylst/>

Alfalfa - Supreme 250.00-300.00, small square 10.00-15.00 per bale  
Alfalfa - Premium 180.00-250.00  
Alfalfa - Good 150.00-180.00, small square 5.00-9.00 per bale  
Alfalfa - Fair 125.00-150.00  
Alfalfa/grass mix - Good/Premium small square 5.00-9.00 per bale  
Mixed grass - Good/Premium 125.00-175.00  
Mixed grass - Fair/Good 100.00-150.00, small square 5.00-8.00 per bale  
Mixed grass - Fair 50.00-100.00 per large round bale  
Corn stalk - 35.00-55.00 per round bale  
Wheat straw - 4.00-7.00 per small square bale

Please Note: The above volumes (tonnage, acres, and bales) listed on this USDA LPGMN report are for confirmed trades only, it does not include estimated volume (tonnage) for bids or offers to the trade.

The current hay directory can be found at: [Hay Directory](#)

List your hay for sale at: [Hay Listing Online Form](#)

Explanation of Hay Quality Guidelines: [Hay Quality Designation Guidelines](#)

Glossary of Terms: [Livestock, Poultry, and Grain Hay Terms](#)

## MISSOURI WEEKLY SHEEP/GOAT AUCTION SUMMARY

03/03/23

Receipts: 1,107 Week Ago: 1,526 Last Year: 1,017

**SHEEP:** Feeder lambs Medium and Large 1-2 hair 30-40 lbs 320.00-330.00; 40-50 lbs 285.00-330.00; pkg 50 lbs 310.00. Slaughter lambs Choice and Prime 1-3 hair 50-70 lbs 250.00-322.50; 70-80 lbs 258.00-265.00; 80-95 lbs 222.00-250.00. Choice 1-3 60-70 lbs 230.00-232.50; pkg 120 lbs 140.00. Good 1-2 hair pkg 72 lbs 155.00. Slaughter ewes Good 2-3 hair 90-150 lbs 120.00-140.00. Utility and Good 1-3 hair 90-100 lbs 119.00-120.00; 100-130 lbs 90.00-115.00. Cull and Utility 1-2 hair pkg 72 lbs 110.00. Bucks 1-2 hair 95-100 lbs 141.00-165.00; 100-120 lbs 100.00-107.00; 150-160 lbs 137.50-145.00.

Replacement ewes Medium and Large 1-2 pkg 2-4 yrs 185 lbs exp 135.00. Small and Medium 1-2 hair 2-4 yrs 75-100 lbs exp 152.50-205.00; 2-4 yrs pkg 75 lbs spr 218.00; 2-4 yrs pkg 128 lbs win 240.00; 4-6 yrs 130-155 lbs exp 147.50-175.00. Small and Medium 1-2 4-6 yrs 90-130 lbs exp with <20 lb lambs 190.00-345.00 per family.

**GOATS:** Feeder kids Selection 1 20-40 lbs 340.00-397.50, fancy pkg 435.00; 40-50 lbs 322.00-400.00, fancy pkg 435.00. Selection 2 20-50 lbs 245.00-325.00, pygmies 242.50-300.00. Selection 3 pkg 35 lbs 150.00; 40-50 lbs pygmies 207.50-210.00. Wether kids Selection 1 pkg 39 lbs 370.00. Slaughter kids 50-60 lbs 322.50-402.50; 60-75 lbs 310.00-350.00, fancy pkg 405.00. Selection 2 50-60 lbs 210.00-305.00; 60-70 lbs 242.50-247.50; 75 lbs 282.50-285.00. Selection 3 pkg 53 lbs 140.00; pkg 61 lbs 180.00. Slaughter nannies/does Selection 1-2 70-80 lbs 150.00-180.00; 80-90 lbs 115.00-150.00; 90-100 lbs 112.00-227.00; 100-150 lbs 127.00-187.50; 160-175 lbs 135.00-137.50. Slaughter bucks/billies Selection 1-2 60-70 lbs pygmies 170.00-177.50; pkg 78 lbs pygmies 140.00; 80-90 lbs 235.00-240.00; pkg 95 lbs pygmies 175.00; 100-140 lbs 130.00-222.50. Wethers Selection 1-2 pkg 68 lbs 150.00; pkg 78 lbs 185.00. Wether kids Selection 1 50-60 lbs 332.00-405.00. Selection 2 50-80 lbs 245.00-272.50; 80-110 lbs 225.00-227.50.

Replacement nannies/does Selection 1-2 1-2 yrs 65-105 lbs exp 195.00-260.00; 2-4 yrs pkg 78 lbs exp 187.50; 2-4 yrs 100-115 lbs exp 205.00-245.00. Families Selection 1-2 2-4 yrs 70-80 lbs exp with <20 lb kids 190.00-270.00 per family.

Explanatory Notes: Stage - Represents estimated lambing/kidding period (Open, Exp=exposed, Bred, Fall = Sep-Nov, Win = Dec-Feb, Spr = Mar-May, Sum=Jun-Aug; w/s = woolled and shorn; /hd= per head; All price CWT unless otherwise noted.

### MISSOURI DROUGHT MONITOR

Date	None	D0	D1	D2	D3	D4
03/07/23	96.92	2.86	0.22	0	0	0
02/28/23	95.98	2.89	1.13	0	0	0
03/08/22	63.80	36.20	0	0	0	0

Reflects percentage of Missouri impacted by drought.  
D0 Abnormally Dry; D1 Moderate Drought; D2 Severe Drought; D3 Extreme Drought; D4 Exceptional Drought

### NATIONAL DIRECT DELIVERED FEEDER PIG REPORT

03/10/23 Receipts: 60,094 Week ago: 91,065 Year Ago: 80,533  
Early weaned pigs 4.00/hd lower. Feeder pigs 2.00/hd higher.  
Early weaned pigs 10-12 lbs. basis: Cash 37,275 head 34.00-60.00, weighted average 51.69. Formula 15,994 head 47.19-59.82, weighted average 52.85. Feeder pigs 40 pounds basis: Cash 6,825 head 83.00-93.00, weighted average 88.43

### NATIONAL DAILY DIRECT PRIOR DAY HOG REPORTS FOR 03/10/23

**BARROWS AND GILTS (Carcass Basis):** 7,265 head  
Base Carcass Price 73.00-80.00, weighted average 78.42

**SOWS (Live Basis):** 6,112 head  
300-500 lbs. 26.00-76.00  
Over 500 lbs. 53.00-76.50

### MISSOURI WEEKLY DIRECT SLAUGHTER CATTLE REPORT 03/10/23

Weekly Receipts: 520 Week ago: 480 Year ago: 460  
Trade as of Friday morning: trade is light to moderate with flat dressed sales 3.00 higher. Grid dressed sales 2.00 higher.

**LIVE STEERS & HEIFERS:** No sales reported  
**DRESSED STEERS & HEIFERS:** 5 loads Thu flat 265.00

**GRADE AND WEIGHT (Grid):** 8 loads Thu 274.00

Click here for the current [National Crop Progress](#)  
Click here for the current [Missouri Crop Progress](#)