

Weekly Market Summary

Published by:
Missouri Department of Agriculture
Ag Business Development Division
Market News Program



Chris Chinn, Director
 Jill Wood, Division Director
 Tony Hancock, Editor
<http://www.ams.usda.gov/marketnews.htm>
<http://www.ams.usda.gov/marketnews.htm>

Michael L. Parson, Governor

Volume XLIII, Number 12 ♦ P.O. Box 630, Jefferson City, MO 65102 ♦ (573) 751-4211 ♦ Monday, March 27, 2023

MISSOURI WEEKLY FEEDER CATTLE WEIGHTED AVERAGE REPORT

Receipts: 24,180 Week ago: 28,266 Year ago: 25,662

Steers and Heifers Medium and Large 1—Weighted average weights and prices

STEERS: Medium and Large 1

327 lbs. 258.24	524 lbs. 237.30	721 lbs. 197.73	916 lbs. 181.30
378 lbs. 262.50	569 lbs. 232.14	779 lbs. 195.91	976 lbs. 169.69
427 lbs. 252.24	620 lbs. 221.37	829 lbs. 184.49	1024 lbs. 161.14
478 lbs. 245.07	669 lbs. 209.44	863 lbs. 184.77	

HEIFERS: Medium and Large 1

275 lbs. 219.78	476 lbs. 217.57	671 lbs. 191.04	877 lbs. 164.94
322 lbs. 232.77	521 lbs. 206.77	721 lbs. 184.93	
379 lbs. 224.93	577 lbs. 201.18	774 lbs. 173.65	
424 lbs. 220.07	628 lbs. 191.95	832 lbs. 169.20	

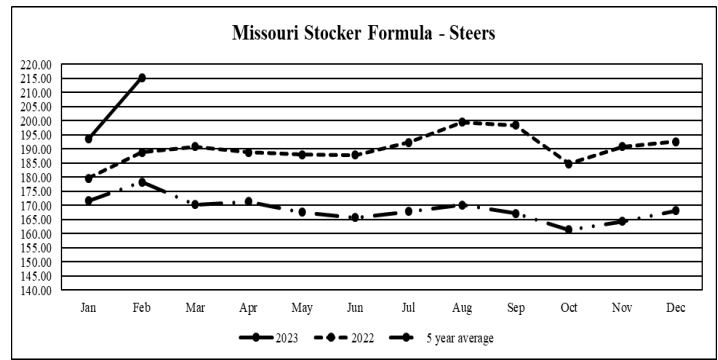
Missouri Steer (Heifer) Stocker Formula for 03/27/2023

Monday's Missouri Stocker Formula consists of **4491 (4873)** head with a weighted average weight of **535.84 (534.23)** lbs. and a price value of **229.81 (200.37)**, 2.74 lower (1.39 lower) than last week.

This a rolling seven day calculated weighted value which combines all Feeder Steers reported by MDA/USDA Market News Service weighing from 400-649 lbs. in the Medium and Large 1 and Medium and Large 1-2 frame and muscle classifications, including all comment cattle except Brahman X. Heifer values are in parentheses.

Missouri Weekly Cattle Auction Summary 03/27/2023

Compared to last week, feeders under 700 lbs. sold steady to mostly 5.00 lower weights over 700 lbs. sold steady to 2.00 lower. Heifers sold uneven from 2.00 lower to 2.00 higher. The supply of feeders was light to slightly moderate. Heavy rains caused flooding in the southern half of the state which prevented some cattle movement. A few barns in the central and northern parts of the state went unreported due to very light offerings mid to late week. Demand for feeders was moderate. Farmers across the state are anxiously continuing to wait for some sun and extended dry time. Very little field work or fertilizing has been done at this point. A few notable sales this week included 124 head of 602 lb. steers at Joplin Regional Stockyards for 227.00, 120 head of 765 lb. steers at Kingsville Livestock Auction brought 204.35 and 60 head of 915 lb. steers at Callaway Livestock Center that sold at 185.35. Unionville Livestock Market sold four loads of reputation steers just on either side of 850 lbs. from 193.10-196.35, which was about 2.00 lower than four loads from the same consignor that sold two weeks ago. Boxed beef cutouts were lower for the week. Choice closed at 278.88, down 3.67 and select closed at 268.75, down 3.69 compared to last Friday. Negotiated feedlot sales as of Friday afternoon was near 83K head. Live sales were reported from 163.00-167.00 and dressed sales 264.00-265.00. The Missouri Stocker Formula consist of 4491 head with a weighted average weight of 535.84 lbs. and a price value of 229.81, 2.74 lower than last week. The steer/heifer spread is 29.44.

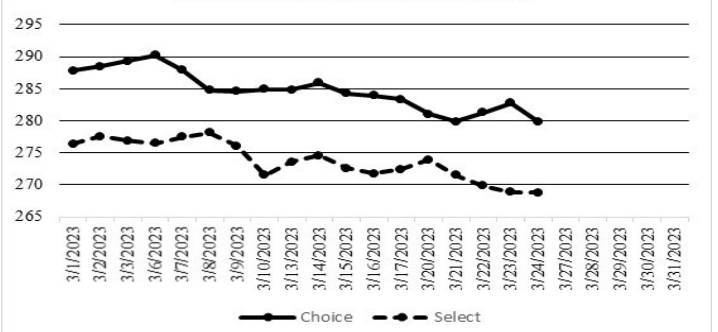


*Graph is updated the first Monday of each month.

NATIONAL BOXED BEEF CUTOUT/BOXED BEEF CUTS

DATE	CHOICE	SELECT	TOTAL LOADS
03/20	281.02	273.94	107
03/21	279.92	271.55	130
03/22	281.30	269.82	147
03/23	282.78	268.89	119
03/24	279.88	268.75	108
5 Day Simple Average	280.98	270.59	

Boxed Beef Cuts March 2023



*Axis value ranges may be updated to reflect data points.

WEEKLY LIVESTOCK SLAUGHTER 03/25/23

	CATTLE	HOGS	SHEEP
Week to Date:	626,000	2,457,000	37,000
Last Week:	631,000	2,492,000	36,000
Last Year:	657,000	2,411,000	38,000

The Weekly Market Summary, as well as historical summaries, are available on our website <https://agmarketnews.mo.gov/summaries>
 Market News Hotline: 1-573-522-9244

SOUTHWEST MISSOURI WEEKLY SUMMARY

(Joplin and Springfield)

Receipts: 9,757 Week ago: 10,584 Year ago: 8,987

Compared to last week, steers and heifers uneven, early week mostly steady, late week steady to 5.00 lower. Slaughter cows steady to 3.00 higher, spots 6.00 higher. Slaughter bulls steady to 2.00 higher.

FEEDER STEERS:
Medium and Large 1

300-400 lbs.	244.00-276.00
400-500 lbs.	226.00-265.00
500-600 lbs.	219.00-252.00
600-700 lbs.	197.00-235.00
700-750 lbs.	193.00-216.00
800-900 lbs.	178.75-186.00
900-1000 lbs.	168.25-179.00
40 hd 1026 lbs.	162.50

FEEDER HEIFERS:
Medium and Large 1

300-400 lbs.	203.50-265.00
400-500 lbs.	202.00-234.00
500-600 lbs.	185.00-211.00
600-700 lbs.	174.00-201.00
700-750 lbs.	176.50-189.50
22 hd 842 lbs.	171.00
Pkg 924 lbs.	167.00

FEEDER HOLSTEIN STEERS
Large 3

300-400 lbs.	146.00-159.00
400-500 lbs.	135.00-160.00
500-600 lbs.	135.00-157.00
600-700 lbs.	130.00-140.00
34 hd 701 lbs.	130.00
15 hd 846 lbs.	136.00
900-1000 lbs.	142.50
pkg 1036 lbs.	120.00

BRED COWS: Medium and Large 1-2 2-8 yrs 885-1390 lbs 2nd to 3rd stage 1025.00-1550.00; >8 yrs couple 1215-1585 lbs 2nd to 3rd stage 1085.00-1200.00 per head
BRED HEIFERS: Medium and Large 1-2 2-4 yrs 720-1200 lbs 2nd to 3rd stage 810.00-1175.00 per head

SLAUGHTER COWS: Breaking and Boning (70-85% lean) 84.00-99.50, high dressing 96.00-113.00; low dressing 71.00-86.00. Lean (85-90%) 72.50-90.00

SLAUGHTER BULLS: Yield Grade 1-2 1210-2205 lbs. 102.00-117.50; high dressing 116.00-130.50; low dressing 88.50-103.00

COW & CALF PAIRS: Medium and Large 1-2 6 pairs 2-8 yrs 960 lbs with 150-300 lb calves 1450.00 per pair

WEST CENTRAL MISSOURI WEEKLY SUMMARY

(Kingsville, Windsor, Butler)

Receipts: 2,624 Week ago: 5,874 Year ago: 4,637

Compared to last week, steers and heifers steady to 6.00 higher. Slaughter cows steady to 5.00 higher.

FEEDER STEERS:
Medium and Large 1

400-500 lbs.	240.00-277.00
500-600 lbs.	228.50-245.00
600-700 lbs.	208.00-232.50
750-800 lbs.	194.00-204.35
850-900 lbs.	181.85-184.00
109 hd 906 lbs.	182.00

FEEDER HEIFERS:
Medium and Large 1

400-500 lbs.	209.00-232.50
500-600 lbs.	187.00-210.00
600-700 lbs.	175.00-195.00
700-800 lbs.	175.50-193.10
800-900 lbs.	159.00-165.00

SLAUGHTER BULLS: Yield Grade 1-2 1320-2210 lbs 105.50-123.00; high dressing 125.00-127.50; low dressing 95.00-105.50

SLAUGHTER COWS: Breaking and Boning (70-85% lean) 83.00-102.50, high dressing 97.00-107.50; low dressing 79.50-91.50. Lean (85-90%) 70.00-90.00

BRED COWS: Medium and Large 1-2 pkg >8 yrs 1127 lbs 2nd to 3rd stage 1375.00 per head

COW & CALF PAIRS: Scarce

NORTHEAST MISSOURI WEEKLY SUMMARY

(Bowling Green, Kingdom City, Palmyra)

Receipts: 6370 Week ago: 3,062 Year ago: 6584

Compared to last week, steers steady to 5.00 higher, except 500-600 lbs 4.00 to 8.00 lower, heifers under 600 lbs steady to 5.00 higher, over 600 lbs steady to 5.00 lower. Slaughter cows steady to firm.

FEEDER STEERS:
Medium and Large 1

400-500 lbs.	236.00-267.00
500-600 lbs.	222.00-246.00
600-700 lbs.	205.00-231.00
700-800 lbs.	184.00-203.25
800-900 lbs.	174.25-188.00
900-950 lbs.	181.25-185.35

FEEDER HEIFERS:
Medium and Large 1

400-500 lbs.	211.00-236.00
500-600 lbs.	194.50-221.00
600-650 lbs.	187.75-204.00
700-800 lbs.	178.10-186.00
800-900 lbs.	169.00

SLAUGHTER BULLS: Yield Grade 1-2 1315-2325 lbs 105.00-128.50; high dressing 120.00-132.00, low dressing 96.00-114.00.

SLAUGHTER COWS: Breaking and Boning, (70-85% lean) 85.00-98.50; high dressing 92.50-111.00; low dressing 77.00-89.00. Lean (85-90%) 80.00-89.50

SLAUGHTER STEERS: Choice 2-3 164.50-169.50. Select 1-2 154.00-158.00.

SLAUGHTER HEIFERS: Choice and Prime 2-4 173.50-175.50. Choice 2-3 165.00-171.00. Select and Choice 1-3 158.00-162.00. Select and Choice 3-4 145.00-155.00.

BRED COWS: Scarce

COW/CALF PAIRS: Scarce

SOUTH CENTRAL MISSOURI WEEKLY SUMMARY

(West Plains, Phillipsburg)

Receipts: 3,872 Week ago: 4,710 Year Ago: 3,081

Compared to last week, steers and heifers mostly steady to 5.00 higher, except early week heifer calves steady to 4.00 lower. Slaughter cows steady. Slaughter bulls steady to 2.00 higher.

FEEDER STEERS:
Medium and Large 1

300-400 lbs.	247.50-276.00
400-500 lbs.	239.50-267.50
500-600 lbs.	227.50-255.00
600-700 lbs.	200.00-230.00
Pkg 708 lbs.	187.00
22 hd 808 lbs.	176.00

FEEDER HEIFERS:
Medium and Large 1

300-400 lbs.	215.00-238.00
400-500 lbs.	205.00-226.00
500-600 lbs.	192.00-212.50
600-700 lbs.	177.00-197.00
700-800 lbs.	162.50-175.00

FEEDER HOLSTEIN STEERS
Large 3

10 hd 446 lbs.	137.00
Pkg 564 lbs.	137.00

SLAUGHTER COWS: Breaking and Boning (70-85% lean) 86.00-96.00, high dressing 95.00-110.00; low dressing 65.00-87.00. Lean (85-90%) 70.00-87.00

SLAUGHTER BULLS: Yield Grade 1-2 1320-2370 lbs. 102.00-117.00; high dressing 112.50-130.00; low dressing 88.00-102.00

BRED COWS: Medium and Large 1 7 hd 2-8 yrs 1194 lbs 2nd to 3rd stage 1800.00. Medium and Large 1-2 2-8 yrs 1010-1395 lbs 1st to 3rd stage 1000.00-1500.00; >8 yrs 1130-1375 lbs 2nd to 3rd stage 1025.00-1375.00 per head

BRED HEIFERS: Medium and Large 1-2 <2 yrs 958-1050 lbs 1st to 3rd stage 1100.00-1250.00 per head

COW & CALF PAIRS: Medium and Large 1-2 2-8 yrs 1165-1280 lbs with 150-300 lb calves 1550.00-1750.00; 2-8 yrs 1255-1290 lbs rebred 1st to 2nd stage 2000.00-2200.00 per pair

NORTH CENTRAL MISSOURI WEEKLY SUMMARY

(Macon, Unionville, Green City, New Cambria)

Receipts: 1,441 Week ago: 2,262 Year ago: 3,003

Compared to two weeks ago, steers under 700 lbs 5.00 to 10.00 higher, over 700 lbs unevenly steady. Heifers weak to 5.00 lower. Slaughter cows uneven from 2.00 lower to 5.00 higher.

*Some sale barns on a bi-weekly schedule and may not have a sale each week.

FEEDER STEERS:
Medium and Large 1

450-500 lbs.	238.00-250.00
500-600 lbs.	230.00-250.00
600-700 lbs.	198.00-229.00
Pkg 712 lbs.	193.50
800-900 lbs.	192.50-196.35

FEEDER HEIFERS:
Medium and Large 1

Pkg 376 lbs.	229.00
400-500 lbs.	210.00-220.00
500-550 lbs.	199.00-212.00
600-700 lbs.	174.00-186.50
700-800 lbs.	168.50-172.00

SLAUGHTER BULLS: Yield Grade 1-2 1300-2175 lbs 93.50-117.00; high dressing few 115.50-122.50; low dressing 86.50-99.50

SLAUGHTER COWS: Breaking and Boning, (70-85% lean) 76.00-102.00; high dressing 90.00-107.50. Lean (85-90%) 66.00-90.00

BRED COWS: Medium and Large 1-2 2-8 yrs 1015-1500 lbs 1225.00-1785.00; >5 yrs 1167-1410 lbs 1st to 3rd stage 1100.00-1385.00 per head

COW & CALF PAIRS: Medium and Large 1-2 2-8 yrs 1050-1350 lbs with 150 to >300 lb calves 1800.00-2200.00 per pair

SOUTHEAST MISSOURI WEEKLY SUMMARY

(Jackson and Farmington)

Receipts: 1,606 Week ago: 1,861 Year ago: 1,208

Compared to last week, steers and heifers uneven from 5.00 lower to 8.00 higher. Slaughter cows 2.00 higher. Slaughter bulls steady to 1.00 higher.

FEEDER STEERS:
Medium and Large 1

300-400 lbs.	225.00-267.50
400-500 lbs.	220.00-250.00
500-600 lbs.	202.00-245.00
600-700 lbs.	180.00-210.00
700-800 lbs.	165.00-189.00
800-900 lbs.	164.00-174.50

FEEDER HEIFERS:
Medium and Large 1

300-400 lbs.	200.00-225.00
400-500 lbs.	195.00-231.00
500-600 lbs.	180.00-210.00
600-700 lbs.	170.00-195.00
700-800 lbs.	164.00-190.00
800-900 lbs.	162.00-169.00

SLAUGHTER BULLS: Yield Grade 1-2 1280-2345 lbs. 82.00-108.50; high dressing 110.00-121.50

SLAUGHTER COWS: Breaking and Boning (75-85% lean) 75.00-89.00; high dressing 86.00-97.50. Lean (85-90% lean) 67.00-75.00

BRED COWS: Medium and Large 2 2-8 yrs 1160-1235 lbs 1st to 2nd stage 1100.00-1300.00 per head

COW & CALF PAIRS: Medium and Large 2 2-8 yrs 1100-1250 lbs with 150 to >300 lb calves 1625.00-2000.00 per pair

EAST CENTRAL MISSOURI WEEKLY SUMMARY

(Cuba, Vienna)

Receipts: 1,395 Week ago: 2,459 Year ago: 2,692

Compared to last week, steers and heifers steady to 6.00 lower, with several under 550 lbs 6.00 to 15.00 lower. Slaughter cows steady.

FEEDER STEERS:
Medium and Large 1

300-400 lbs.	255.00-265.00
400-500 lbs.	230.00-262.00
500-600 lbs.	230.00-243.50
600-700 lbs.	193.00-233.00
700-800 lbs.	180.00-184.00
850-900 lbs.	160.00-167.00

FEEDER HEIFERS:
Medium and Large 1

300-400 lbs.	210.00-230.00
400-500 lbs.	205.00-223.00
500-600 lbs.	185.00-211.00
600-700 lbs.	175.50-194.50
700-800 lbs.	169.00-175.00

SLAUGHTER BULLS: Yield Grade 1-2 1395-2235 lbs 106.00-116.00; high dressing 121.00-123.00; low dressing 80.00-102.00

SLAUGHTER COWS: Breaking and Boning, (70-85% lean) 88.50-98.50; high dressing 98.00-105.50; low dressing 84.50-88.50. Lean (85-90%) 78.00-90.00

BRED COWS: Medium and Large 1-2 2-8 yrs 941-1320 lbs 1st to 2nd stage 1100.00-1375.00 per head

COW & CALF PAIRS: Medium and Large 1-2 2-8 yrs 950-1300 lbs with 150-300 lb calves 1585.00-1800.00 per pair

NORTHWEST MISSOURI WEEKLY SUMMARY

(Tina)

Receipts: 1,341 Two Weeks ago: 2,276

Compared to two weeks ago, feeder calves 2.00 to 4.00 lower on a light test, although a few instances steady to firm on attractive quality bunches. Slaughter cows steady.

FEEDER STEERS:
Medium and Large 1

300-400 lbs.	240.00-260.00
400-500 lbs.	239.00-252.50
500-600 lbs.	220.00-251.00
600-700 lbs.	201.00-225.00
700-750 lbs.	183.50-199.50

FEEDER HEIFERS:
Medium and Large 1

300-400 lbs.	211.00-225.00
400-500 lbs.	200.00-233.00
500-600 lbs.	200.00-225.00
600-700 lbs.	178.50-184.00
700-750 lbs.	164.00-176.00

SLAUGHTER BULLS: Yield Grade 1-2 1245-2185 lbs 104.00-115.00

SLAUGHTER COWS: Breaking and Boning, (70-85% lean) 80.00-96.00; high dressing 90.00-103.50. Lean (85-90%) 72.00-83.00

BRED COWS: Scarce

COW & CALF PAIRS: Scarce

AFTERNOON NATIONAL SLAUGHTER CATTLE REVIEW

Thus far Friday negotiated cash trade was mostly inactive on light demand in all feeding regions. Not enough purchase in any feeding region for an adequate market test. On Thursday in the Southern Plains and Nebraska trade was mostly inactive on light to moderate demand. The latest established market in the Southern Plains was on Wednesday with live purchases at 163.00. In Nebraska on Wednesday, live purchases traded from 164.00-165.00 with dressed purchases at 265.00. The latest established market in the Western Cornbelt was on Wednesday with live purchases from 164.00- 166.00, mostly at 165.00 with dressed purchases from 264.00-265.00, mostly at 265.00.

Negotiated Cash Sales:					
Confirmed:	2,966	Week Ago:	3,320	Year Ago:	2,371
Week to date:	82,943	Week Ago:	72,528	Year Ago:	90,451

<u>Live Basis</u>	<u>Steers</u>	<u>Heifers</u>
Over 80% Choice	164.00-166.00, avg 164.99	-
65-80% Choice	-	-
35-65% Choice	-	-
0-35% Choice	-	-
Total All Grades	164.00-166.00, avg 164.99	-
<u>Dressed Basis</u>		
Over 80% Choice	265.00	-
65-80% Choice	-	-
35-65% Choice	-	-
0-35% Choice	-	-
Total All Grades	265.00	-

<u>All Beef Type Steers/Heifers</u>	<u>Head</u>	<u>Avg Wt</u>	<u>Price Range</u>	<u>Wtd Avg</u>
Live FOB	777	1462.3	163.00-168.50	165.52
Live Del	119	1317.1	159.00-169.00	164.60
Dressed Del	2,070	929.2	265.00	265.00
Dressed FOB	-	-	-	-

WEEKLY COMMODITY FUTURES TRENDS

Compared to last week, Live Cattle Apr, Jun, Aug 0.02 to 0.68 higher, others 0.73 to 1.00 lower, Lean Hogs 1.10 to 2.70 lower, Feeder Cattle Mar and Apr 0.15 to 0.80 higher, others 1.18 to 2.40 lower.

Daily Futures Closes

	Mon.	Tues.	Wed.	Thu.	Fri.
Cattle					
Apr	162.02	162.42	162.30	162.15	163.00
Jun	155.52	156.15	155.90	155.80	156.60
Aug	155.75	156.05	155.97	155.70	156.42
Oct	160.82	160.65	160.27	160.05	160.62
Dec	166.15	165.92	165.47	165.05	165.45
Lean Hogs					
Apr	77.77	77.05	76.07	75.75	77.17
May	85.15	84.70	83.25	83.35	85.67
Jun	91.87	91.35	89.35	89.37	91.42
Jul	94.17	93.32	91.40	91.37	93.57
Aug	94.52	93.52	91.82	91.55	93.52
Fdr Cat					
Mar	188.20	188.77	188.25	189.02	189.65
Apr	194.62	194.70	194.37	195.00	194.80
May	199.15	199.55	198.77	198.60	197.55
Aug	214.70	215.10	214.57	214.62	214.12
Sep	218.00	218.32	217.77	217.87	217.00
Milk					
Mar	18.05	18.05	18.04	18.10	18.10
Apr	19.02	18.99	19.36	19.76	19.93
May	18.51	18.44	18.67	18.95	19.12

WEEKLY COMMODITY GRAIN FUTURES TRENDS

Compared to last week, Soybeans 0.40 to 0.57 lower, Wheat 0.14 to 0.22 lower, Corn May and Jul 0.01 to 0.09 higher, others 0.01 lower, KC Wheat 0.06 to 0.13 higher, Soybean Meal 6.70 to 20.90 lower.

Daily Grain Futures Closes

	Mon.	Tues.	Wed.	Thu.	Fri.
Soybeans					
May	1486	1467	1448 1/2	1419 1/2	1428 1/4
Jul	1466 3/4	1448 1/2	1425	1398 1/2	1406 1/4
Aug	1420 1/4	1403 1/2	1378	1353 1/2	1361
Sep	1345 3/4	1330 1/2	1304 3/4	1286 3/4	1297 3/4
Nov	1309	1296	1272 1/2	1258	1273 1/4
Wheat					
May	700 3/4	683 1/4	663 1/2	662	688 1/2
Jul	708 1/2	692 1/2	674 3/4	674	700
Sep	716 3/4	701 3/4	685 1/2	685 3/4	711 1/4
Dec	729 1/2	716 1/4	701	702 1/4	727 1/2
Mar	738 1/2	727	712 1/2	714	738 3/4
Corn					
May	633	630	633 1/4	631 3/4	643
Jul	615 1/2	611 1/4	611 3/4	610 3/4	623
Sep	567 3/4	563 1/2	561 3/4	560	569 1/4
Dec	560	556 3/4	554 1/2	552 1/4	560 1/4
Mar	568 1/4	565 1/4	563 1/4	561	569
KC Wheat					
May	829 3/4	820 1/4	811 1/4	819 3/4	848
Jul	815 1/4	806 3/4	799 1/4	806 1/2	834 1/4
Sep	814	805 3/4	798 1/4	804 3/4	831 1/2
Dec	816 3/4	809 1/2	801 3/4	807	832 3/4
Mar	816	809 1/4	800 3/4	805 3/4	830 1/4
SB Meal					
May	462.70	460.60	451.60	438.30	445.10
Jul	455.70	454.30	446.90	434.50	441.60
Aug	442.30	441.60	435.60	425.30	432.50
Sep	425.80	425.80	420.80	412.50	420.30
Oct	413.20	413.30	409.30	402.10	410.50

MISSOURI GRAIN WEEKLY TRENDS

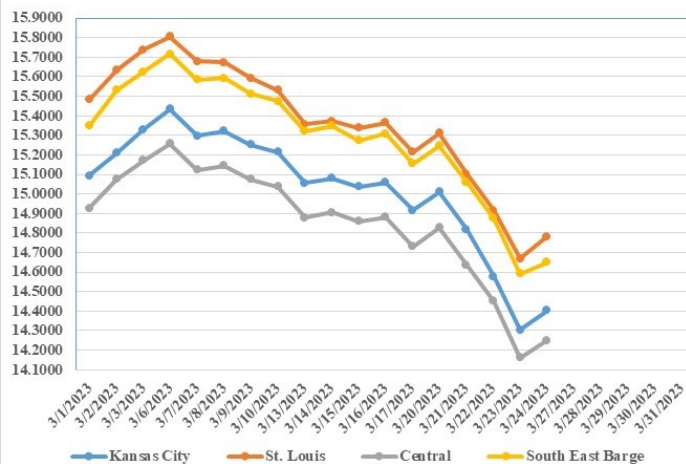
Compared to last week, Soybeans 0.44 to 0.60 lower, Wheat 0.07 to 0.22 lower, Corn 0.02 to 0.14 higher, Sorghum 0.09 to 0.19 higher.

Area	#1 Soybeans	#2 Soft Wheat	#2 Corn	#2 Grain Sorghum
Kansas City				
Friday**	14.77-15.07	7.27	6.54-6.74	6.69
Monday	14.86-15.16	7.17	6.53-6.73	6.68
Tuesday	14.67-14.97	6.99	6.50-6.70	6.65
Wednesday	14.40-14.79	6.80	6.54-6.74	6.69
Thursday	14.14-14.50	6.78	6.57-6.77	6.67
Friday	14.21-14.58	7.05	6.68-6.88	6.78
St. Louis				
Friday**	15.22	7.01	6.80-6.82	6.89-6.99
Monday	15.31	6.91	6.79-6.80	6.88-6.98
Tuesday	15.10-15.11	6.73	6.73-6.74	6.85-6.95
Wednesday	14.92	6.54-6.69	6.77-6.78	6.89-6.99
Thursday	14.67-14.68	6.52-6.67	6.72-6.73	6.97
Friday	14.78	6.79-6.94	6.83-6.84	7.08-7.13
Central				
Friday**	14.67-14.77	6.86	6.54-6.59	---
Monday	14.76-14.86	6.76	6.53-6.58	---
Tuesday	14.57-14.67	6.58	6.50-6.55	---
Wednesday	14.39-14.49	6.39	6.54-6.59	---
Thursday	14.10-14.20	6.37	6.52-6.57	---
Friday	14.18-14.28	6.64	6.63-6.68	---
S.E. MO				
Friday**	15.07-15.22	---	6.66-6.74	---
Monday	15.15-15.31	---	6.62-6.73	---
Tuesday	14.97-15.12	---	6.60-6.70	---
Wednesday	14.79-14.94	---	6.66-6.74	---
Thursday	14.52-14.65	---	6.60-6.72	---
Friday	14.58-14.73	---	6.70-6.85	---

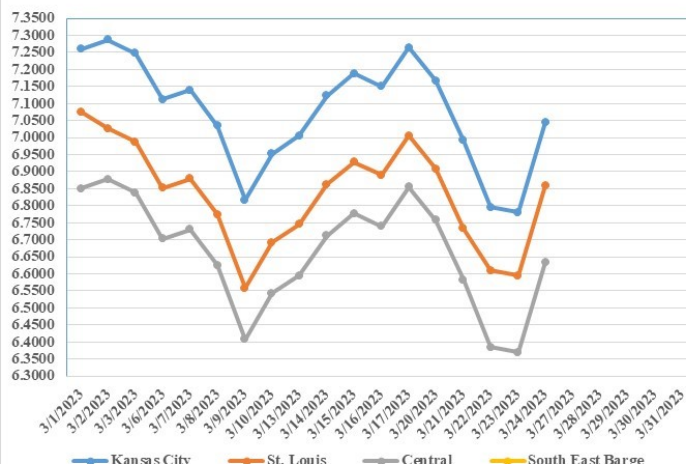
(PRICES PER BUSHEL) *NEW CROP **PREVIOUS WEEK'S PRICES
*Bids calculated using Kansas City, St. Louis, and St. Joseph bids

MONTHLY GRAIN CROP

March 2023 Soybean Bids



March 2023 Wheat Bids



March 2023 Corn Bids



*Axis value ranges may be updated to reflect data points.

WHOLESALE FEEDSTUFFS PRICES (DOLLARS PER TON-BULK BASIS)

Area	Soybean Hulls Pellets	Soybean Meal 46.5-48%	Corn Gluten Pellets 21%	Wheat Middlings
Kansas City	160.00	449.60	295.67	195.00
St. Louis	n/a	n/a	277.50	172.50

COLD STORAGE

February 2023 Highlights

Total natural cheese stocks in refrigerated warehouses on February 28, 2023 were down slightly from the previous month and down 1 percent from February 28, 2022.

Butter stocks were up 12 percent from last month and up 12 percent from a year ago.

Total frozen poultry supplies on February 28, 2023 were up 3 percent from the previous month and up 10 percent from a year ago. Total stocks of chicken were down slightly from the previous month but up 10 percent from last year. Total pounds of turkey in freezers were up 11 percent from last month and up 10 percent from February 28, 2022.

Total frozen fruit stocks were down 9 percent from last month but up 17 percent from a year ago.

Total frozen vegetable stocks were down 6 percent from last month but up 3 percent from a year ago.

Total red meat supplies in freezers were down 3 percent from the previous month but up 2 percent from last year. Total pounds of beef in freezers were down 6 percent from the previous month and down 6 percent from last year. Frozen pork supplies were up slightly from the previous month and up 9 percent from last year. Stocks of pork bellies were up 1 percent from last month and up 42 percent from last year.

LIVESTOCK SLAUGHTER

Commercial Red Meat Production Down 4 Percent from Last Year

Commercial red meat production for the United States totaled 4.26 billion pounds in February, down 4 percent from the 4.43 billion pounds produced in February 2022.

Beef production, at 2.09 billion pounds, was 7 percent below the previous year. Cattle slaughter totaled 2.55 million head, down 5 percent from February 2022. The average live weight was down 21 pounds from the previous year, at 1,374 pounds.

Veal production totaled 3.8 million pounds, 10 percent below February a year ago. Calf slaughter totaled 25,700 head, down 16 percent from February 2022. The average live weight was up 12 pounds from last year, at 255 pounds.

Pork production totaled 2.16 billion pounds, down 1 percent from the previous year. Hog slaughter totaled 9.97 million head, up slightly from February 2022. The average live weight was down 2 pounds from the previous year, at 291 pounds.

Lamb and mutton production, at 10.1 million pounds, was up 9 percent from February 2022. Sheep slaughter totaled 154,800 head, 8 percent above last year. The average live weight was 129 pounds, up 1 pound from February a year ago.

January to February 2023 commercial red meat production was 9.03 billion pounds, up slightly from 2022. Accumulated beef production was down 2 percent from last year, veal was down 7 percent, pork was up 3 percent from last year, and lamb and mutton production was up 6 percent.

MISSOURI WEEKLY HAY SUMMARY 03/23/23

It continues to be extremely wet across the state. There has been little to no field work completed at this time. An ever so small number of pastures and hay fields have been fertilized but so far there hasn't been enough dry time to make for any rush on buggies yet. Heavy rains and the probability of flooding is expected over the next few days across the Ozarks. Hay feeding is decreasing with each passing day as cattle start to chase grass but some sun is needed before grass can really get ahead of grazing pressure. The supply of hay is light, demand is moderate and prices are steady. The Missouri Department of Agriculture has a hay directory visit <http://mda.mo.gov/abd/haydirectory/> for listings of hay <http://agebb.missouri.edu/haylst/>

Alfalfa - Supreme 250.00-300.00, small square 10.00-15.00 per bale

Alfalfa - Premium 180.00-250.00

Alfalfa - Good 150.00-180.00, small square 5.00-9.00 per bale

Alfalfa - Fair 125.00-150.00

Alfalfa/grass mix - Good/Premium small square 5.00-9.00 per bale

Mixed grass - Good/Premium 125.00-175.00

Mixed grass - Fair/Good 100.00-150.00, small square 5.00-8.00 per bale

Mixed grass - Fair 50.00-100.00 per large round bale

Corn stalk - 35.00-55.00 per round bale

Wheat straw - 4.00-7.00 per small square bale

Please Note: The above volumes (tonnage, acres, and bales) listed on this USDA LPGMN report are for confirmed trades only, it does not include estimated volume (tonnage) for bids or offers to the trade.

The current hay directory can be found at: [Hay Directory](http://agebb.missouri.edu/haylst/)

List your hay for sale at: [Hay Listing Online Form](http://agebb.missouri.edu/haylst/)

Explanation of Hay Quality Guidelines: [Hay Quality Designation Guidelines](http://agebb.missouri.edu/haylst/)

Glossary of Terms: [Livestock, Poultry, and Grain Hay Terms](http://agebb.missouri.edu/haylst/)

MISSOURI WEEKLY SHEEP/GOAT AUCTION SUMMARY

Receipts: 2508 Week Ago: 1,552 Last Year: 1832

SHEEP: Feeder lambs Small and Medium 1-2 20-50 lbs 250.00-353.00. Slaughter lambs Choice and Prime 1-3 w/s pkg 96 lbs 190.00; 14 hd 142 lbs 155.00. Choice and Prime 1-3 hair 50-70 lbs 265.00-305.00; 80-90 lbs 230.00-240.00; pkg 91 lbs 175.00; pkg 118 lbs 180.00. Choice 1-3 hair 50-60 lbs 250.00-275.00; 60-70 lbs 240.00-250.00; 88 lbs 175.00-230.00. Slaughter ewes Utility and Good 1-3 100-125 lbs 100.00-140.00. Cull and Utility 1-3 pkg 109 lbs 100.00. Bucks 1-2 hair 135-145 lbs 80.00-130.00; 160-180 lbs 110.00-144.00. Replacement ewes Small and Medium 1-2 hair <1 yrs 80-100 lbs exp 205.00-300.00/hd; 1-2 yrs 80-90 lbs exp 130.00-195.00/hd; 2-4 yrs 100-130 lbs exp 150.00-170.00/hd; 2-4 yrs 125-140 lbs spr 185.00-190.00/hd; 4-6 yrs 95-145 lbs exp 120.00-190.00/hd; 4-6 yrs 122 lbs spr 185.00/hd. Families Small and Medium 1-2 <1 yrs 106 lbs spr with <20 lb lambs 185.00/fam; 2-4 yrs 95-135 lbs exp 200.00-430.00/fam; 4-6 yrs 90-135 lbs exp 180.00-375.00/fam. Small and Medium 1-2 2-4 yrs 95-125 lbs exp with 20-40 lb lambs 240.00-420.00/fam; 4-6 yrs 95-140 lbs exp 210.00-405.00/fam; >6 yrs 95 lbs exp with 20-40 lb lambs 120.00/family.

GOATS: Feeder kids Selection 1 16 hd 26 lbs 346.00; 30-55 lbs 360.00-410.00, replacements 520.00. Selection 2 25-35 lbs pygmies 250.00-280.00; 35-50 lbs 265.00-315.00. Slaughter kids Selection 1 50-65 lbs 355.00-430.00; 70-80 lbs 305.00-330.00. Selection 2 50-60 lbs 270.00-340.00; 60-70 lbs 270.00-290.00; pkg 80 lbs 260.00. Selection 3 50-75 lbs 185.00-250.00. Slaughter nannies/does Selection 1-2 80-90 lbs 120.00-200.00. Slaughter bucks/billies Selection 1-2 85-145 lbs 225.00-230.00. Wethers Selection 1-2 11 hd 100 lbs 277.50. Replacement nannies/does Selection 1-2 <1 yrs 75-130 lbs exp 260.00-310.00; 1-2 yrs 75-105 lbs bred 170.00-300.00/hd; 1-2 yrs 70-85 lbs exp 190.00-240.00/hd; 2-4 yrs 90-100 lbs exp 170.00-255.00/hd. Families Selection 1-2 2-4 yrs exp 65 lbs pygmies with <20 lb kids 160.00/fam; 2-4 yrs pkg 84 lbs exp with <20 lb kids 375.00/fam; 4-6 yrs 87 lbs exp with <20 lb kids 220.00/fam.

Explanatory Notes: Stage - Represents estimated lambing/kidding period (Open, Exp=exposed, Bred, Fall = Sep-Nov, Win = Dec-Feb, Spr = Mar-May, Sum=Jun-Aug; w/s = woolled and shorn; /hd = per head; /fam=per family
All price CWT unless otherwise noted.

MISSOURI DROUGHT MONITOR

Date	None	D0	D1	D2	D3	D4
03/21/23	92.50	5.97	1.32	0.21	0	0
03/14/23	97.37	2.42	0.21	0	0	0
03/22/22	73.88	26.12	0	0	0	0

Reflects percentage of Missouri impacted by drought.
D0 Abnormally Dry; D1 Moderate Drought; D2 Severe Drought; D3 Extreme Drought; D4 Exceptional Drought

NATIONAL DIRECT DELIVERED FEEDER PIG REPORT

03/24/23 Receipts: 88,991 Week ago: 77,496 Year Ago: 70,885
Early weaned pigs 7.00/hd lower. Feeder pigs 3.00/hd lower.
Early weaned pigs 10-12 lbs. basis: Cash 47,900 head 20.00-56.00, weighted average 39.64. Formula 37,952 head 40.58-54.55, weighted average 46.89. Feeder pigs 40 pounds basis: Cash 3,139 head 74.00-88.00, weighted average 85.89

NATIONAL DAILY DIRECT PRIOR DAY HOG REPORTS FOR 03/24/23

BARROWS AND GILTS (Carcass Basis): 7,755 head
Base Carcass Price 71.00-79.00, weighted average 76.84

SOWS (Live Basis): 7,081 head
300-500 lbs. 23.00-76.50
Over 500 lbs. 36.50-79.00

MISSOURI WEEKLY DIRECT SLAUGHTER CATTLE REPORT 03/24/23

Weekly Receipts: 360 Week ago: 480 Year ago: 420
Trade as of Friday morning: trade is light to moderate with flat dressed sales 2.00 higher. Grid dressed sales steady.

LIVE STEERS & HEIFERS: No sales reported
DRESSED STEERS & HEIFERS: 4 loads Thu flat 265.00 (80% Choice).
3 loads Thu flat 269.00 (90% Choice).

GRADE AND WEIGHT (Grid): 2 loads Thu 270.00

Click here for the current [National Crop Progress](#)
Click here for the current [Missouri Crop Progress](#)