

Weekly Market Summary

Published by:
Missouri Department of Agriculture
Ag Business Development Division
Market News Program



Chris Chinn, Director
 Jill Wood, Division Director
 Tony Hancock, Editor
<http://www.ams.usda.gov/marketnews.htm>
<http://www.ams.usda.gov/marketnews.htm>

Michael L. Parson, Governor

Volume XLIII, Number 15 ♦ P.O. Box 630, Jefferson City, MO 65102 ♦ (573) 751-4211 ♦ Monday, April 17, 2023

MISSOURI WEEKLY FEEDER CATTLE WEIGHTED AVERAGE REPORT

Receipts: 27,611 Week ago: 30,039 Year ago: 21,485
 Steers and Heifers Medium and Large 1—Weighted average weights and prices

STEERS: Medium and Large 1

237 lbs. 284.78	424 lbs. 273.69	626 lbs. 231.13	826 lbs. 195.90
284 lbs. 279.48	471 lbs. 266.06	665 lbs. 224.87	880 lbs. 191.04
325 lbs. 282.65	526 lbs. 251.51	716 lbs. 214.19	914 lbs. 186.10
380 lbs. 275.42	569 lbs. 244.83	767 lbs. 207.07	957 lbs. 183.75

HEIFERS: Medium and Large 1

271 lbs. 262.71	475 lbs. 233.75	684 lbs. 206.68	862 lbs. 176.46
327 lbs. 252.24	521 lbs. 223.05	722 lbs. 203.13	910 lbs. 176.14
376 lbs. 246.95	577 lbs. 216.15	773 lbs. 186.10	968 lbs. 167.52
426 lbs. 236.72	620 lbs. 207.42	823 lbs. 179.30	

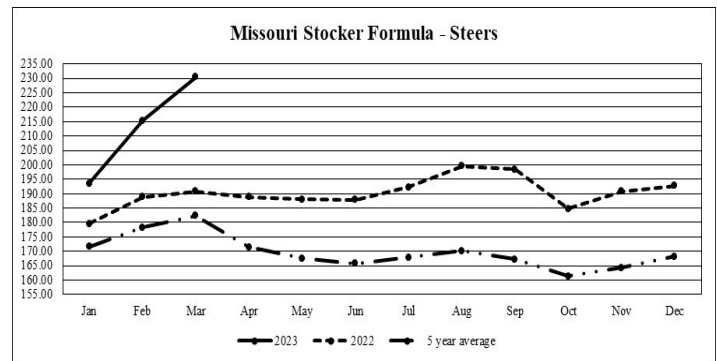
MISSOURI STEER (HEIFER) STOCKER FORMULA 04/17/2023

Monday's Missouri Stocker Formula consists of **5529 (5788)** head with a weighted average weight of **526.10 (518.26)** lbs. and a price value of **244.76 (218.02)**, 6.05 higher (5.92 higher) than last week.

This a rolling seven day calculated weighted value which combines all Feeder Steers reported by MDA/USDA Market News Service weighing from 400-649 lbs. in the Medium and Large 1 and Medium and Large 1 -2 frame and muscle classifications, including all comment cattle except Brahman X. Heifer values are in parentheses.

MISSOURI WEEKLY CATTLE AUCTION SUMMARY

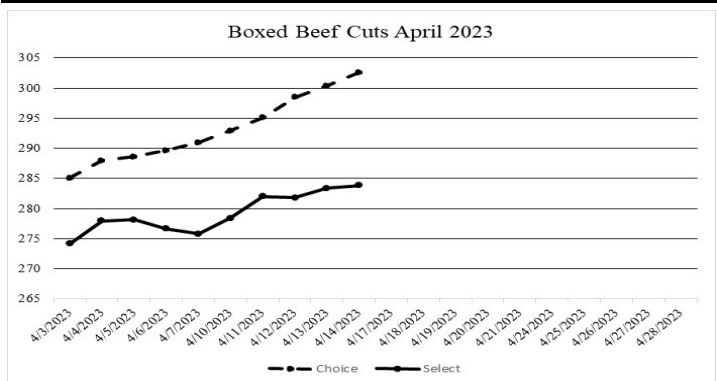
Compared to last week, feeders sold 5.00 to 10.00 higher, with some instances of 15.00 higher. The supply of feeders was moderate. For the second time in three weeks heifers outnumbered steers and bulls. The five biggest strings of the week were all heifers and all consisted of over 200 head each! Demand was good to very good. Spring field work got underway big time this week with a lot of tillage work and some planting being done. Fertilizer also got spread on many pastures and hayfields that hadn't been able to get across previously. Some stick out sales this week included 79 head of 640 lb. steers at Mid-Missouri Stockyards which sold for 230.75. New Cambria Livestock Auction sold 77 head of 716 lb. steers for 226.50. Mo-Kan Livestock Market sold 54 head of 832 lb. steers for 204.50. Out of several impressive heifer sales the draft that stood out most was 122 head of 719 lb. heifers at Joplin Regional Stockyards which sold at 215.00. Boxed beef cutouts continued to their sharp climb higher this week. Choice closed at 302.62, up 11.64 and select closed at 287.87, up 8.09 compared to last Friday. Negotiated feedlot sales as of Friday afternoon was near 85K head. Live sales were reported from 175.00 in the south to 186.00 in the north and dressed sales 285.00-290.00. This week trade once again set new all-time record high prices. The Missouri Stocker Formula consist of 5529 head with a weighted average weight of 526.10 lbs. and a price value of 244.76, 6.05 higher than last week. The steer/heifer spread is 26.74.



*Graph is updated the first Monday of each month.

NATIONAL BOXED BEEF CUTOFF/BOXED BEEF CUTS

DATE	CHOICE	SELECT	TOTAL LOADS
04/10/23	292.91	278.40	69
04/11/23	295.10	282.04	88
04/12/23	298.48	281.81	104
04/13/23	300.42	283.38	97
04/14/23	302.62	283.87	80
5 Day Simple Average	295.58	280.28	



*Axis value ranges may be updated to reflect data points.

WEEKLY LIVESTOCK SLAUGHTER 04/15/23

	CATTLE	HOGS	SHEEP
Week to Date:	613,000	2,438,000	34,000
Last Week:	603,000	2,370,000	34,000
Last Year:	638,000	2,346,000	39,000

The Weekly Market Summary, as well as historical summaries, are available on our website <https://agmarketnews.mo.gov/summaries>
 Market News Hotline: 1-573-522-9244

SOUTHWEST MISSOURI WEEKLY SUMMARY

(Joplin and Springfield)

Receipts: 12,198 Week ago: 12,872 Year ago: 9,718
Compared to last week, steers and heifers 4.00 to 8.00 higher, spots 12.00 higher. Slaughter cows and bulls steady to 5.00 higher.

FEEDER STEERS:

Medium and Large 1

Table with 2 columns: Weight (300-400 lbs to 900-1000 lbs) and Price (258.00-183.75).

FEEDER HEIFERS:

Medium and Large 1

Table with 2 columns: Weight (300-400 lbs to Pkg 906 lbs) and Price (226.00-169.00).

FEEDER HOLSTEIN STEERS

Large 3

Table with 2 columns: Weight (300-350 lbs to 1000-1050 lbs) and Price (140.00-130.00).

SLAUGHTER COWS: Breaking and Boning (70-85% lean)

85.00-100.00, high dressing 97.50-114.00; low dressing 81.00-87.00. Lean (85-90%) 75.00-90.00

SLAUGHTER BULLS: Yield

Grade 1-2 1210-2395 lbs. 100.00-117.00; high dressing 114.00-132.50; low dressing 80.00-100.00

BRED COWS: Medium and Large

1 2-8 yrs 1007-1735 lbs 2nd to 3rd stage 1600.00-1875.00, 1st stage 1400.00-1525.00. Medium and Large 1-2 2-8 yrs 920-1480 lbs 2nd to 3rd stage 1200.00-1575.00, 1st to 2nd stage 900.00-1350.00 per head

BRED HEIFERS: Medium and Large 1 <2 yrs 981-1040 lbs 2nd to 3rd stage 1550.00-1725.00; 2-4 yrs 1073-1208 lbs 2nd to 3rd stage 1750.00-1800.00 per head

COW & CALF PAIRS: Medium and Large 1

2-8 yrs 1073-1635 lbs with <150 to >300 lb calves 1925.00-2625.00; 2-8 yrs 1374-1910 lbs rebred 1st to 2nd stage with >300 lb calves 2350.00-3200.00 per pair. Medium and Large 1-2 2-8 yrs 918-1740 lbs with <150 to >300 lb calves 1200.00-1900.00; 2-8 yrs 1160-1530 rebred 1st stage with 150->300 lb calves 1600.00-1950.00 per pair

SOUTH CENTRAL MISSOURI WEEKLY SUMMARY

(West Plains, Phillipsburg)

Receipts: 5,145 Week ago: 3,842 Year Ago: 3,652
Compared to last week, early week feeder calves 6.00 to 12.00 higher, yearlings 4.00 to 6.00 higher and late week steers uneven from 6.00 lower to 4.00 higher and heifers steady spots 4.00 to 8.00 higher under 425 lbs. Slaughter cows and bulls steady to 6.00 higher.

FEEDER STEERS:

Medium and Large 1

Table with 2 columns: Weight (300-400 lbs to 850-900 lbs) and Price (262.50-187.00).

FEEDER HEIFERS:

Medium and Large 1

Table with 2 columns: Weight (300-400 lbs to 700-800 lbs) and Price (230.00-182.50).

FEEDER HOLSTEIN STEERS

Large 3

Scarce Scarce

SLAUGHTER COWS: Breaking and Boning (70-85% lean)

85.00-100.00, high dressing 96.00-109.00; low dressing 68.00-88.00. Lean (85-90%) 72.00-88.00

SLAUGHTER BULLS: Yield

Grade 1-2 1162-2375 lbs. 100.00-119.00; high dressing 113.50-134.00; low dressing 75.00-104.00

BRED COWS: Medium and Large

1 few 2-8 yrs 1305-1550 lbs 1435.00-1650.00. Medium and Large 1-2 2-8 yrs 1060-1395 lbs 1st to 3rd stage 1100.00-1450.00 per head

BRED HEIFERS: Medium and Large

1 7 hd <2 yrs 925 lbs 3rd stage 1450.00. Medium and Large 1-2 <2 yrs 875-920 lbs 1st to 3rd stage 900.00-1000.00 per head

COW & CALF PAIRS: Medium and Large

1-2 2-8 yrs 1315-1367 lbs with 150-300 lb calves 1725.00-1825.00; 2-8 yrs 1215-1275 lbs rebred 1st to 2nd stage with 150 lb to >300 lb calves 2150.00-2250.00 per pair

WEST CENTRAL MISSOURI WEEKLY SUMMARY

(Kingsville, Windsor, Butler)

Receipts: 5,629 Week ago: 4,832 Year ago: 4,431
Compared to last week, steers and heifers 5.00 to 12.00 higher, spots 15.00 to 20.00 higher on calves. Slaughter cows steady to 4.00 higher.

FEEDER STEERS:

Medium and Large 1

Table with 2 columns: Weight (400-500 lbs to 800-900 lbs) and Price (248.50-184.50).

FEEDER HEIFERS:

Medium and Large 1

Table with 2 columns: Weight (400-500 lbs to 800-900 lbs) and Price (220.00-173.50).

SLAUGHTER BULLS: Yield

Grade 1-2 1210-2410 lbs 112.00-126.00; high dressing 127.00-132.50; low dressing 102.50-113.00

SLAUGHTER COWS: Breaking and Boning (70-85% lean)

88.00-105.50, high dressing 97.50-114.00; low dressing 78.50-93.00. Lean (85-90%) 80.00-92.00

BRED COWS: Medium and Large

1-2 5-8 yrs 1025-1425 lbs 2nd to 3rd stage 1275.00-1500.00 per head

COW & CALF PAIRS: Medium and Large

1-2 2-8 yrs 1100-1300 lbs with 150-300 lb calves 1600.00-1825.00 per pair

NORTHEAST MISSOURI WEEKLY SUMMARY

(Bowling Green, Kingdom City, Palmyra)

Receipts: 4,273 Week ago: 6,104 Year ago: 5,005
Compared to last week, steers under 600 lbs 5.00 to 10.00 higher, 600-700 lbs firm to 5.00 higher, 700-800 lbs higher undertone. Heifers 400-500 lbs 5.00 to 10.00 higher, spots 15.00 higher, over 500 lbs steady to firm. Slaughter cows steady.

FEEDER STEERS:

Medium and Large 1

Table with 2 columns: Weight (300-400 lbs to Pkg 906 lbs) and Price (269.00-190.50).

FEEDER HEIFERS:

Medium and Large 1

Table with 2 columns: Weight (300-400 lbs to 58 hd 910 lbs) and Price (240.00-177.00).

SLAUGHTER BULLS: Yield

Grade 1-2 1385-2390 lbs 111.00-128.00; high dressing 122.00-137.50, low dressing 83.50-110.00.

SLAUGHTER COWS: Breaking and Boning (70-85% lean)

90.50-99.00; high dressing 97.50-110.00; low dressing 81.00-91.00. Lean (85-90%) 80.50-90.00

SLAUGHTER STEERS: Choice 2

-3 179.00-182.00. Select and Choice 1-3 169.00-175.50.

SLAUGHTER HEIFERS: Choice

2-3 173.50-176.50. Select and Choice 1-3 170.00-175.00. Select 1-2 168.00-169.00.

BRED COWS: Medium and Large

1-2 5-8 yrs 1263-1513 lbs 2nd to 3rd stage 1400.00-1825.00 per head

COW/CALF PAIRS: Medium and Large

1-2 2-8 yrs 1050-1250 lbs rebred 1st to 2nd stage with <150 to 300 lb calves 2100.00-2325.00 per pair

NORTH CENTRAL MISSOURI WEEKLY SUMMARY

(Macon, Unionville, Green City, New Cambria)

Receipts: 2,447 Week ago: 4,281 Year ago: 3,948
Compared to two weeks ago, steers and heifers 6.00 to 12.00 higher, spots 15.00 to 20.00 higher. Slaughter cows steady to 2.00 higher.

*Some sale barns on a bi-weekly schedule and may not have a sale each week.

FEEDER STEERS:

Medium and Large 1

Table with 2 columns: Weight (400-500 lbs to 16 hd 851 lbs) and Price (254.50-200.00).

FEEDER HEIFERS:

Medium and Large 1

Table with 2 columns: Weight (400-500 lbs to 700-750 lbs) and Price (221.00-198.50).

SLAUGHTER BULLS: Yield

Grade 1-2 1450-2080 lbs 106.00-118.50; couple high dressing 118.00-118.50.

SLAUGHTER COWS: Breaking and Boning (70-85% lean)

85.00-102.50; high dressing 100.00-107.50. Lean (85-90%) 74.50-89.00

BRED COWS: Scarce

COW & CALF PAIRS: Scarce

SOUTHEAST MISSOURI WEEKLY SUMMARY

(Jackson and Farmington)

Receipts: 1,399 Week ago: 1,751 Year ago: 1,190

Compared to last week, steers and heifers 1.00 to 8.00 higher, with 300-400 lb steers and heifers 12.00 to 20.00 higher. Slaughter cows and bulls 2.00 to 3.00 higher.

FEEDER STEERS:
Medium and Large 1

300-400 lbs.	227.00-267.00
400-500 lbs.	226.00-265.00
500-600 lbs.	217.00-257.00
600-700 lbs.	189.00-211.00
700-800 lbs.	175.00-205.00
800-900 lbs.	174.00-176.00

FEEDER HEIFERS:
Medium and Large 1

300-400 lbs.	210.00-251.00
400-500 lbs.	214.00-237.00
500-600 lbs.	195.00-227.00
600-650 lbs.	180.00-199.00
700-800 lbs.	170.00-181.00

SLAUGHTER BULLS: Yield Grade 1-2 990-2160 lbs. 88.00-107.00; high dressing 109.00-119.00

SLAUGHTER COWS: Breaking and Boning (75-85% lean) 79.50-90.00; high dressing 88.00-102.00. Lean (85-90% lean) 65.00-75.00

BRED COWS: Medium and Large 2 2-8 yrs 1005-1620 lbs 1st to 3rd stage 935.00-1600.00; >8 yrs 1110-1330 lbs 2nd to 3rd stage 1000.00-1100.00 per head

COW & CALF PAIRS: 2-8 yrs 1000-1450 lbs with 150-300 lb calves 1750.00-1950.00; >8 yrs 1150-1350 lbs with <150 to 300 lb calves 1250.00-1750.00 per pair

EAST CENTRAL MISSOURI WEEKLY SUMMARY

(Cuba, Vienna)

Receipts: 2,482 Week ago: 1,999 Year ago: 2,192

Compared to last week, steers 4.00 to 10.00 higher and heifers 6.00 to 18.00 higher. Slaughter cows steady to 2.00 higher.

FEEDER STEERS:
Medium and Large 1

300-400 lbs.	260.00-289.00
400-500 lbs.	251.00-286.00
500-600 lbs.	236.00-268.00
600-700 lbs.	205.00-240.00
700-750 lbs.	208.50-224.50

FEEDER HEIFERS:
Medium and Large 1

300-400 lbs.	234.00-257.00
400-500 lbs.	234.00-259.00
500-600 lbs.	210.00-246.00
600-650 lbs.	202.00-221.00
700-750 lbs.	179.50-185.00

SLAUGHTER BULLS: Yield Grade 1-2 1415-2050 lbs 113.00-118.00; high dressing 122.00-132.00; couple low dressing 96.00-103.50

SLAUGHTER COWS: Breaking and Boning, (70-85% lean) 92.00-102.00; high dressing 98.00-107.50; low dressing 85.50-92.00. Lean (85-90%) 82.00-92.00

BRED COWS: Medium and Large 1-2 2-8 yrs 950-1425 lbs 1st to 3rd stage 1200.00-1525.00 per head

COW & CALF PAIRS: Medium and Large 1-2 750-1120 lbs with <150 to 300 lb calves 1450.00-1725.00 per pair

NORTHWEST MISSOURI WEEKLY SUMMARY

(Tina) w/e 04/07/23

Receipts: 1,501 Two Weeks ago: 1,791

Compared to two weeks ago, steers and heifers 5.00 to 10.00 higher, spots as much as 20.00 higher, with that full advance on 550-650 lb heifers. Slaughter cows 1.00 to 3.00 higher.

FEEDER STEERS:
Medium and Large 1

14 hd 388 lbs.	266.00
400-500 lbs.	240.00-263.00
500-600 lbs.	229.00-247.00
600-700 lbs.	211.00-224.50
700-750 lbs.	191.00-207.00

FEEDER HEIFERS:
Medium and Large 1

350-400 lbs.	228.00-237.00
400-500 lbs.	217.00-230.00
500-600 lbs.	208.50-228.50
600-700 lbs.	195.00-207.25

SLAUGHTER BULLS: Yield Grade 1-2 1400-2050 lbs 110.00-124.00

SLAUGHTER COWS: Breaking and Boning, (70-85% lean) 83.50-105.50; high dressing 101.00-107.00. Lean (85-90%) 75.00-87.00.

BRED COWS: Scarce

COW & CALF PAIRS: Scarce

AFTERNOON NATIONAL SLAUGHTER CATTLE REVIEW

Thus far for Friday in Nebraska negotiated cash trading has been limited on light demand. In the Southern Plains and Western Cornbelt negotiated cash trading has been mostly inactive with light demand. Not enough purchases in any region for a full market trend. The most recent reported market was on Thursday in all regions. In the Southern Plains live purchases traded at 175.00. In Nebraska live and dressed purchases traded from 182.00-186.00 and at 290.00, respectively. In the Western Cornbelt live and dressed purchases traded from 180.00-184.00 and at 290.00, respectively.

Negotiated Cash Sales:

Confirmed:	2,820	Week Ago:	1,221	Year Ago:	554
Week to date:	84,555	Week Ago:	102,052	Year Ago:	96,553

<u>Live Basis</u>	<u>Steers</u>	<u>Heifers</u>
Over 80% Choice	182.00-184.00, avg 184.84	183.00
65-80% Choice	-	-
35-65% Choice	-	-
0-35% Choice	-	-
Total All Grades	182.00-184.00, avg 184.82	183.00
<u>Dressed Basis</u>		
Over 80% Choice	290.00	290.00
65-80% Choice	-	-
35-65% Choice	-	-
0-35% Choice	-	-
Total All Grades	290.00	290.00

<u>All Beef Type Steers/Heifers</u>	<u>Head</u>	<u>Avg Wt</u>	<u>Price Range</u>	<u>Wtd Avg</u>
Live FOB	1229	1496.3	170.00-184.00	180.96
Live Del	-	-	-	-
Dressed Del	1508	899.7	280.00-290.00	289.76
Dressed FOB	40	794	284.00	284.00

WEEKLY COMMODITY FUTURES TRENDS

Compared to last week, Live Cattle Apr 3.68 higher and others 0.37 to 0.62 higher, Lean Hogs 1.30 to 2.40 lower, Feeder Cattle 0.78 to 2.75 higher.

Daily Futures Closes

	Mon.	Tues.	Wed.	Thu.	Fri.
Cattle					
Apr	171.37	172.30	174.27	175.50	174.75
Jun	163.70	163.95	164.85	164.50	163.72
Aug	162.90	163.25	163.97	163.25	162.70
Oct	166.52	167.07	167.80	166.97	166.60
Dec	171.20	171.80	172.22	171.55	171.27
Lean Hogs					
Apr	73.37	73.05	72.30	71.60	71.75
May	82.85	82.37	81.52	79.95	80.45
Jun	89.15	87.85	87.55	85.65	86.87
Jul	92.15	90.75	90.27	88.52	89.65
Aug	92.95	91.75	91.27	89.75	90.52
Fdr Cat					
Apr	200.92	202.10	202.22	202.67	203.40
May	205.62	207.82	208.57	207.80	207.90
Aug	223.00	224.35	225.75	224.97	223.95
Sep	226.02	227.62	229.30	228.72	227.60
Oct	227.95	229.75	231.55	231.05	229.95
Milk					
Apr	18.66	18.62	18.66	18.68	18.62
May	17.77	17.91	18.24	17.95	17.69
Jun	17.98	18.15	18.83	18.19	17.99

WEEKLY COMMODITY GRAIN FUTURES TRENDS

Compared to last week, Soybeans uneven from 0.09 lower to 0.07 higher, Wheat uneven from 0.04 lower to 0.06 higher, Corn May and Jul 0.15 to 0.22 higher, others 0.03 higher, KC Wheat 0.13 to 0.17 higher, Soybean Meal 2.10 to 7.10 higher, except Oct 0.40 lower.

Daily Grain Futures Closes

	Mon.	Tues.	Wed.	Thu.	Fri.
Soybeans					
May	1487 1/4	1497 1/4	1504 1/4	1501	1500 1/2
Jul	1461 3/4	1471 1/4	1472 1/4	1473 1/4	1467 1/4
Aug	1412 1/2	1421 1/4	1420 1/2	1423 3/4	1415 1/2
Sep	1337	1343 3/4	1339 1/2	1344 1/2	1334 1/2
Nov	1309 3/4	1314 1/4	1307 3/4	1312 1/2	1301 1/2
Wheat					
May	678 1/2	674	679 1/2	667	682 1/2
Jul	690 3/4	684	687	676	692 1/2
Sep	703	695 1/2	698	686 1/4	702
Dec	721 1/2	712 1/4	713 3/4	702 3/4	717 3/4
Mar	733 1/4	723 1/4	724	712 3/4	727 1/2
Corn					
May	654	651	656	652 1/4	666 1/4
Jul	630 1/2	627 3/4	627 3/4	625 1/2	635 3/4
Sep	570 1/4	567 1/4	562 1/2	561	567 3/4
Dec	562 3/4	559 1/4	555 1/2	553 3/4	560
Mar	570 1/4	567	564	562	568 1/4
KC Wheat					
May	876	868 1/4	863 1/2	845 1/4	878 3/4
Jul	858 1/4	850	846 1/4	831 1/4	863 1/4
Sep	854 1/4	846 1/4	843 1/4	827 1/2	857 3/4
Dec	855 3/4	847 1/2	845	828 1/4	857 1/4
Mar	854 1/4	846	843 1/4	826 1/4	855 1/4
SB Meal					
May	450.70	457.80	460.20	463.60	459.70
Jul	448.10	455.00	457.40	460.90	456.80
Aug	439.50	445.50	447.10	450.10	446.50
Sep	426.90	431.70	432.70	434.20	430.40
Oct	415.70	419.40	420.20	419.70	416.70

MISSOURI GRAIN WEEKLY TRENDS

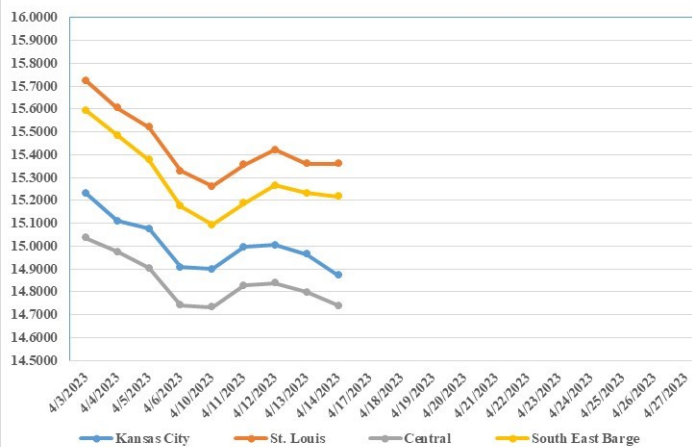
Compared to last Thursday, Soybeans 0.10 lower to 0.05 higher, Wheat 0.07 to 0.08 higher, Corn 0.13 to 0.22 higher, Sorghum 0.08 to 0.28 higher.

Area	#1 Soybeans	#2 Soft Wheat	#2 Corn	#2 Grain Sorghum
Kansas City				
Friday**	Holiday			
Monday	14.77-14.97	6.95	6.79-6.94	6.89
Tuesday	14.86-15.06	6.90	6.76-6.91	6.86
Wednesday	14.87-15.07	6.96	6.81-6.96	6.91
Thursday	14.88-15.08	6.83	6.76-6.88	6.76
Friday	14.72-15.02	6.99	6.86-6.98	6.86
St. Louis				
Friday**	Holiday			
Monday	15.25-15.27	6.69-6.82	6.92-6.94	7.29
Tuesday	15.35-15.36	6.64-6.77	6.89-6.90	7.26
Wednesday	15.42	6.70-6.83	6.94	7.31
Thursday	15.35-15.37	6.57-6.70	6.89-6.90	6.27
Friday	15.35-15.38	6.73-6.86	7.04-7.05	7.41
Central				
Friday**	Holiday			
Monday	14.67-14.77	6.54	6.74-6.79	
Tuesday	14.76-14.86	6.49	6.71-6.76	
Wednesday	14.77-14.87	6.55	6.71-6.81	
Thursday	14.73-14.88	6.42	6.69-6.77	
Friday	14.67-14.82	6.58	6.86-6.91	
S.E. MO				
Friday**	Holiday			
Monday	15.02-15.22		6.74-6.89	
Tuesday	15.12-15.32		6.71-6.86	
Wednesday	15.19-15.39		6.76-6.91	
Thursday	15.16-15.36		6.72-6.87	
Friday	15.16-15.33		6.86-6.98	

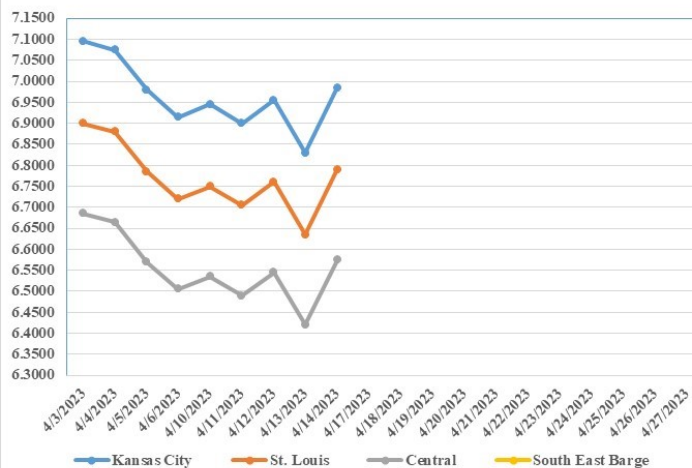
(PRICES PER BUSHEL) *NEW CROP **PREVIOUS WEEK'S PRICES
*Bids calculated using Kansas City, St. Louis, and St. Joseph bids

MONTHLY GRAIN CROP

April 2023 Soybean Bids



April 2022 Wheat Bids



April 2023 Corn Bids



*Axis value ranges may be updated to reflect data points.

WHOLESALE FEEDSTUFFS PRICES (DOLLARS PER TON-BULK BASIS)

Area	Soybean Hulls Pellets	Soybean Meal 46.5-48%	Corn Gluten Pellets 21%	Wheat Middlings
Kansas City	183.33	455.70	291.00	160.00
St. Louis	n/a	n/a	256.67	152.50

WORLD AGRICULTURAL SUPPLY AND DEMAND EST

WHEAT: The outlook for 2022/23 U.S. wheat this month is for slightly higher supplies, reduced domestic use, unchanged exports, and increased ending stocks. Supplies are raised 5 million bushels on higher imports, based on the pace of Census imports reported to date. Domestic use is lowered 25 million bushels on reduced feed and residual use, which is decreased to 55 million. The downward revision is based on the implied disappearance for the second and third quarters indicated in the NASS Grain Stocks report. Wheat exports remain at 775 million bushels but there are offsetting by-class changes for White and Hard Red Spring exports. Projected 2022/23 ending stocks are raised 30 million bushels to 598 million but are still 14 percent below last year. The 2022/23 season-average farm price is forecast \$0.10 per bushel lower at \$8.90, based on NASS prices reported to date and expectations for cash prices for the remainder of 2022/23.

COARSE GRAINS: This month's 2022/23 U.S. corn outlook is for reductions to imports and food, seed, and industrial (FSI) use, with unchanged ending stocks. Corn imports are lowered 10 million bushels based on observed trade to date. Feed and residual use is unchanged at 5.275 billion based on indicated disappearance during the December-February quarter. FSI is lowered 10 million bushels reflecting cuts to corn used for glucose and dextrose and starch. With supply and use falling by the same amount, ending stocks are unchanged at 1.342 billion bushels. The season-average farm price is unchanged at \$6.60 per bushel.

OILSEEDS: U.S. soybean supply and use forecasts for 2022/23 are unchanged relative to last month. Soybean and soybean meal prices are also unchanged. The soybean oil price is projected at 64.0 cents per pound, down 2 cents.

MISSOURI CROP PROGRESS 04/09/23

There were 5.0 days suitable for fieldwork during the week ending April 9, 2023. Temperatures last week averaged 54.4 degrees, 3.7 degrees above normal. Precipitation averaged 0.36 inches, 0.31 inches below normal. Topsoil moisture supply rated 1 percent very short, 6 percent short, 87 percent adequate, and 6 percent surplus. Subsoil moisture supply rated 2 percent very short, 11 percent short, 79 percent adequate, and 8 percent surplus. Corn planted was 7 percent complete, compared to the 5-year average of 3 percent. Rice planted was 1 percent complete, compared to the 5-year average of 4 percent. Winter wheat condition rated 1 percent very poor, 2 percent poor, 24 percent fair, 67 percent good, and 6 percent excellent.

	Week Ending			2018-2022 Average
	4/9/23	4/2/23	4/9/22	
Corn Planted	7	-	1	3
Rice Planted	1	-	1	4

Winter Wheat Condition (percent)

Date	Very Poor	Poor	Fair	Good	Excellent
4/9/23	1	2	24	67	6
4/2/23	1	2	22	73	2
4/9/22	1	3	39	50	7

MISSOURI WEEKLY HAY SUMMARY 04/13/23

Long days and short nights seemed to be the theme for this week. Farmers all across the state were very busy. Fertilizer buggies and anhydrous tanks were hard to get as everyone is rolling now. Corn planting is underway with many farmers working into the late hours as the weather is about as perfect as one can ask for. The supply of hay is light, demand is light to moderate and prices are steady. The Missouri Department of Agriculture has a hay directory visit <http://mda.mo.gov/abd/haydirectory/> for listings of hay <http://agebb.missouri.edu/haylst/>

- Alfalfa - Supreme 250.00-300.00, small square 10.00-15.00 per bale
- Alfalfa - Premium 180.00-250.00
- Alfalfa - Good 150.00-180.00, small square 5.00-9.00 per bale
- Alfalfa - Fair 125.00-150.00
- Alfalfa/grass mix - Good/Premium small square 5.00-9.00 per bale
- Mixed grass - Good/Premium 125.00-175.00
- Mixed grass - Fair/Good 100.00-150.00, small square 5.00-8.00 per bale
- Mixed grass - Fair 50.00-100.00 per large round bale
- Corn stalk - 35.00-55.00 per round bale
- Wheat straw - 4.00-7.00 per small square bale

Please Note: The above volumes (tonnage, acres, and bales) listed on this USDA LPGMN report are for confirmed trades only, it does not include estimated volume (tonnage) for bids or offers to the trade. The current hay directory can be found at: [Hay Directory](#)
List your hay for sale at: [Hay Listing Online Form](#)
Explanation of Hay Quality Guidelines: [Hay Quality Designation Guidelines](#)
Glossary of Terms: [Livestock, Poultry, and Grain Hay Terms](#)

MISSOURI WEEKLY SHEEP/GOAT AUCTION SUMMARY

Receipts: 565 Week Ago: 3,141 Last Year: 789

SHEEP: Feeder lambs Small and Medium 1-2 30-40 lbs hair 255.00-280.00.

Slaughter lambs Choice and Prime woolled pkg 57 lbs 257.50. Choice 1-2 woolled pkg 58 lbs 225.00; pkg 95 lbs 175.00. Choice and Prime 1-3 hair 40-90 lbs 235.00-265.00. Choice 1-2 hair 40-60 lbs 230.00-235.00; 60-90 lbs 200.00-225.00. Slaughter ewes Utility and Good 1-2 125-155 lbs 76.00-95.00. Utility 1-2 115-175 lbs 57.50-70.00. Cull 1 pkg 72 lbs 41.00.

Replacement ewes Medium 1-2 hair 9 hd 1-2 yrs 76 lbs exp 250.00/hd; 4-6 yrs 128 lbs exp 150.00 /hd.

GOATS: Feeder kids Selection 1 pkg 31 lbs 345.00.

Slaughter kids Selection 1 40-60 lbs 320.00-325.00. Selection 1-2 65-75 lbs 280.00-285.00. Selection 2 pkg 40 lbs 245.00; pkg 63 lbs 245.00.

Replacement nannies/does Selection 1-2 7 hd 1-2 yrs 82 lbs exp 205.00/hd.

Explanatory Notes: Stage - Represents estimated lambing/kidding period (Open, Exp=exposed, Bred, Fall = Sep-Nov, Win = Dec-Feb, Spr = Mar-May, Sum=Jun-Aug; w/s = woolled and shorn; /hd= per head; /fam=per family
All price CWT unless otherwise noted.

MISSOURI DROUGHT MONITOR

Date	None	D0	D1	D2	D3	D4
04/11/23	91.14	7.07	1.58	0.21	0	0
04/04/23	91.14	7.08	1.58	0.21	0	0
04/12/22	99.99	0.01	0	0	0	0

Reflects percentage of Missouri impacted by drought. D0 Abnormally Dry; D1 Moderate Drought; D2 Severe Drought; D3 Extreme Drought; D4 Exceptional Drought

NATIONAL DIRECT DELIVERED FEEDER PIG REPORT

04/14/23 Receipts: 119,688 Week ago: 75,273 Year Ago: 73,872
Early weaned pigs 5.00/hd lower. Feeder pigs 1.00/hd lower.
Early weaned pigs 10-12 lbs. basis: Cash 76,169 head 10.00-38.00, weighted average 23.11.
Formula 29,914 head 32.03-47.31, weighted average 37.26
Feeder pigs 40 pounds basis: Cash 13,605 head 53.00-77.00, weighted average 71.32.

NATIONAL DAILY DIRECT PRIOR DAY HOG REPORTS FOR 04/17/23

BARROWS AND GILTS (Carcass Basis): 4,237 head
Base Carcass Price 62.00-72.00, weighted average 68.75
SOWS (Live Basis): 6,539 head
300-500 lbs. 20.00-62.00
Over 500 lbs. 26.00-65.50

MISSOURI WEEKLY DIRECT SLAUGHTER CATTLE REPORT 04/14/23

Weekly Receipts: 600 Week ago: 560 Year ago: 460
Trade as of Friday morning; trade is light to moderate with flat dressed sales 10.00 to 15.00 higher and grid dressed 16.00 higher.

LIVE STEERS & HEIFERS: No sales reported
DRESSED STEERS & HEIFERS: 9 loads Thu flat 285.00-290.00

GRADE AND WEIGHT (Grid): 6 loads Thu 298.00

Click here for the current [National Crop Progress](#)
Click here for the current [Missouri Crop Progress](#)