

Weekly Market Summary

Published by:
Missouri Department of Agriculture
Ag Business Development Division
Market News Program



Chris Chinn, Director
 Jill Wood, Division Director
 Tony Hancock, Editor
<http://www.ams.usda.gov/marketnews.htm>
<http://www.ams.usda.gov/marketnews.htm>

Michael L. Parson, Governor

Volume XLIII, Number 20 ♦ P.O. Box 630, Jefferson City, MO 65102 ♦ (573) 751-4211 ♦ Monday, May 22, 2023

MISSOURI WEEKLY FEEDER CATTLE WEIGHTED AVERAGE REPORT

Receipts: 35,266 Week ago: 35,718 Year ago: 28,976
 Steers and Heifers Medium and Large 1—Weighted average weights and prices

STEERS: Medium and Large 1

279 lbs. 273.76	474 lbs. 270.60	669 lbs. 229.45	871 lbs. 203.90
328 lbs. 288.13	524 lbs. 263.12	728 lbs. 214.00	926 lbs. 194.58
376 lbs. 281.45	574 lbs. 254.18	769 lbs. 211.89	988 lbs. 182.50
424 lbs. 274.34	622 lbs. 239.00	821 lbs. 205.94	1056 lbs. 176.00

HEIFERS: Medium and Large 1

325 lbs. 250.02	522 lbs. 229.61	725 lbs. 203.70	911 lbs. 169.60
379 lbs. 244.12	570 lbs. 224.55	780 lbs. 191.64	
426 lbs. 241.44	621 lbs. 213.91	815 lbs. 186.85	
474 lbs. 238.89	663 lbs. 210.06	878 lbs. 178.91	

MISSOURI STEER (HEIFER) STOCKER FORMULA 05/22/2023

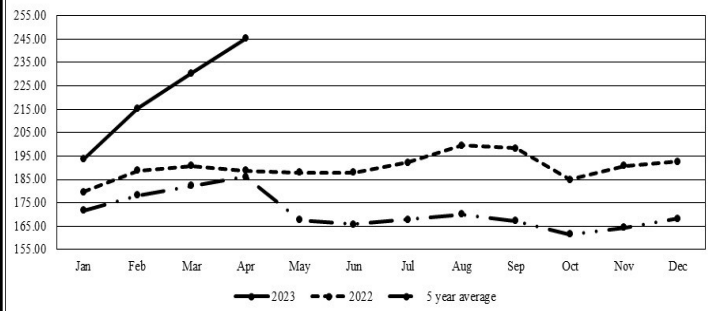
Monday's Missouri Stocker Formula consists of **9058 (8443)** head with a weighted average weight of **532.32 (516.20)** lbs. and a price value of **253.97 (226.20)**, 6.62 higher (10.82 higher) than last week. This a rolling seven day calculated weighted value which combines all Feeder Steers reported by MDA/USDA Market News Service weighing from 400-649 lbs. in the Medium and Large 1 and Medium and Large 1 -2 frame and muscle classifications, including all comment cattle except Brahman X. Heifer values are in parentheses.

MISSOURI WEEKLY CATTLE AUCTION SUMMARY

Compared to last week, feeders sold steady to 5.00 higher with instances of 10.00 higher especially on the heifer sales. The supply of feeders was moderate to heavy. Auctions continue to see offerings much larger than seasonally typical. Prices jumped back following the slight down turn last week and many producers are marketing cattle early as pasture worries remain. Most areas have received rain but there is still a lot of dry areas and even some that didn't receive any which are extremely dry. Hay harvest has begun and that too looks to be short which is a huge concern given hay stocks are pretty much zero following last year. The largest draft in the state this week was 226 head of 826 lb. steers at Tina Livestock which sold for 204.00. There was several loads of eight weight steers around the state all with a 2 in front of them again and selling from 200.00-209.35. New Cambria Livestock Market sold 84 head of 702 lb. steers at 235.85 and another 52 head of 516 lb. steers at 285.00. Some smaller packages of four weights are back flirting close to that 300.00 market again but most of the bigger drafts of better quality were in the 275.00-285.00 range. Boxed beef cutouts continued to the downward trend this week. Choice closed at 301.10, down 3.51 and select closed at 283.94, down 0.70 compared to last Friday. Negotiated feedlot sales as of Friday afternoon totaled only 63K head, there was likely more sales after the report came in that won't show until the weekly recap. Live sales were reported from 170.00-178.00 and dressed sales 280.00-282.00. The Missouri Stocker Formula consist of 9058 head with a weighted average weight of 532.32 lbs. and a price value of 253.97, 6.62 higher than last week. The steer/heifer spread is 27.77.

The Weekly Market Summary, as well as historical summaries, are available on our website <https://agmarketnews.mo.gov/summaries>
 Market News Hotline: 1-573-522-9244

Missouri Stocker Formula - Steers

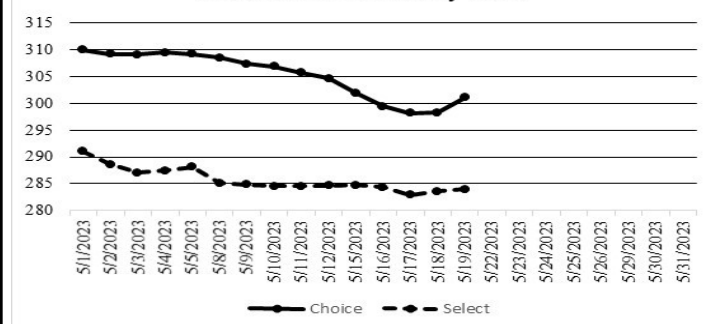


*Graph is updated the first Monday of each month. Axis value ranges may be updated to reflect data points.

NATIONAL BOXED BEEF CUTOUT/BOXED BEEF CUTS

DATE	CHOICE	SELECT	TOTAL LOADS
05/15	301.98	284.71	91
05/16	299.47	284.35	136
05/17	298.15	282.89	120
05/18	298.31	283.61	82
05/19	301.10	283.94	92
5 Day Simple Average	299.80	283.90	

Boxed Beef Cuts May 2023



*Axis value ranges may be updated to reflect data points.

WEEKLY LIVESTOCK SLAUGHTER 05/20/23

	CATTLE	HOGS	SHEEP
Week to Date:	642,000	2,408,000	35,000
Last Week:	646,000	2,368,000	35,000
Last Year:	677,000	2,403,000	30,000

SOUTHWEST MISSOURI WEEKLY SUMMARY

(Joplin and Springfield)

Receipts: 9,642 Week ago: 13,474 Year ago: 9,463

Compared to last week, steers and heifers unevenly steady to 5.00 higher, spots 10.00 to 15.00 higher on heifers early week. Slaughter cows 1.00 to 5.00 higher, spots up to 8.00 higher. Slaughter bulls steady to 4.00 higher.

FEEDER STEERS:
Medium and Large 1

300-400 lbs.	280.00-300.00
400-500 lbs.	254.00-287.00
500-600 lbs.	230.00-278.00
600-700 lbs.	214.00-245.00
700-800 lbs.	203.00-220.00
800-900 lbs.	195.00-206.50
900-1000 lbs.	182.50-194.50
60 hd 1056 lbs.	176.00

FEEDER HEIFERS:
Medium and Large 1

300-400 lbs.	240.00-292.00
400-500 lbs.	212.00-254.00
500-600 lbs.	197.50-235.00
600-700 lbs.	191.00-229.00
700-800 lbs.	176.00-207.00
800-900 lbs.	182.00-193.00

FEEDER HOLSTEIN STEERS
Large 3

Scarce

Scarce

SLAUGHTER COWS: Breaking and Boning (70-85% lean) 82.00-104.50, high dressing 97.50-117.00; low dressing 80.00-87.50. Lean (85-90%) 74.00-91.00

SLAUGHTER BULLS: Yield Grade 1-2 1075-2455 lbs. 101.00-124.50; high dressing 119.00-136.50; low dressing 81.00-106.00

BRED COWS: Medium and Large 1-2 2-8 yrs 1000-1400 lbs 2nd to 3rd stage 1210.00-1650.00 few reg up to 1950.00 per head.

COW & CALF PAIRS: Medium and Large 1-2 2-8 yrs 1000-1350 lbs with baby to 300 lb calves few rebred 1500.00-2300.00 over 8 yrs 1080-1210 lbs with baby to 300 lb calves 1550.00-1850.00 per pair

BRED HEIFERS: Medium and Large 1-2 2-4 yrs 900-1205 2nd and 3rd stage 1200.00-1425.00 few reg up to 2150.00

SOUTH CENTRAL MISSOURI WEEKLY SUMMARY

(West Plains, Phillipsburg)

Receipts: 5,878 Week ago: 5,637 Year Ago: 5,778

Compared to last week, steers and heifers uneven from 3.00 lower to 4.00 higher. Slaughter cows steady to 6.00 higher, with most of the gain early week. Slaughter bulls steady to 3.00 higher.

FEEDER STEERS:
Medium and Large 1

Pkg 328 lbs.	292.00
400-500 lbs.	248.00-280.00
500-600 lbs.	237.00-280.00
600-700 lbs.	219.00-240.00
700-750 lbs.	217.00-221.00
25 hd 831 lbs.	195.50
49 hd 983 lbs.	182.50

FEEDER HEIFERS:
Medium and Large 1

300-400 lbs.	235.00-253.00
400-500 lbs.	214.00-242.50
500-600 lbs.	199.00-232.50
600-700 lbs.	188.00-209.50
20 hd 797 lbs.	185.50
800-850 lbs.	176.00-182.00
12 hd 912 lbs.	169.50

FEEDER HOLSTEIN STEERS
Large 3

13 hd 533 lbs. 106.00

SLAUGHTER COWS: Breaking and Boning (70-85% lean) 85.00-100.00, high dressing 97.00-111.00; low dressing 75.00-89.00. Lean (85-90%) 73.00-88.00

SLAUGHTER BULLS: Yield Grade 1-2 1030-2290 lbs. 107.00-120.00; high dressing 121.00-136.00; low dressing 88.00-106.00

BRED COWS: Medium and Large 1 2-8 yrs 1185-1410 lbs 2nd stage 1300.00-1335.00. Medium and Large 1-2 2-8 yrs 954-1370 lbs 1st to 3rd stage 1100.00-1375.00 per head

COW & CALF PAIRS: Medium and Large 1-2 5-8 yrs 1150-1350 lbs with 150-300 lb calves 1485.00-1650.00; 4 pairs >5 yrs 989 lbs with 150-300 lb calves 1100.00 per pair

WEST CENTRAL MISSOURI WEEKLY SUMMARY

(Kingsville, Windsor, Butler)

Receipts: 8,291 Week ago: 8,219 Year ago: 5,795

Compared to last week, steer and heifer calves steady to 10.00 higher, yearlings steady. Slaughter cows 2.00 to 8.00 higher.

FEEDER STEERS:
Medium and Large 1

400-500 lbs.	250.00-287.00
500-600 lbs.	232.00-270.00
600-700 lbs.	210.00-249.00
700-800 lbs.	213.00-224.50
800-900 lbs.	207.75-209.35

FEEDER HEIFERS:
Medium and Large 1

300-400 lbs.	224.00-270.00
400-500 lbs.	221.00-256.00
500-600 lbs.	209.00-251.00
600-700 lbs.	195.00-230.00
700-800 lbs.	190.00-213.00

SLAUGHTER BULLS: Yield Grade 1-2 1250-2195 lbs 108.00-128.00; high dressing 126.00-134.00; low dressing 97.00-105.00

SLAUGHTER COWS: Breaking and Boning (70-85% lean) 86.50-105.00, high dressing 99.00-112.00; low dressing 78.00-93.00. Lean (85-90%) 70.00-91.00

BRED COWS: Medium and Large 1-2 5-8 yrs 958-1205 lbs 2nd to 3rd stage 1160.00-1500.00 per head

COW & CALF PAIRS: Medium and Large 1-2 4 pairs 5-8 yrs 1225 lbs with 150-300 lb calves 1700.00 per pair

NORTHEAST MISSOURI WEEKLY SUMMARY

(Bowling Green, Kingdom City, Palmyra)

Receipts: 6,176 Week ago: 6,096 Year ago: 4,892

Compared to last week, steers under 700 lbs and heifers under 600 lbs steady to 5.00 higher, heavier weights steady to firm on a light test. Slaughter cows 3.00 to 8.00 higher.

FEEDER STEERS:
Medium and Large 1

300-400 lbs.	281.00-213.00
400-500 lbs.	271.00-299.50
500-600 lbs.	245.00-286.00
600-700 lbs.	220.00-248.00
700-800 lbs.	211.50-215.50
35 hd 801 lbs.	208.75
56 hd 926 lbs.	197.00

FEEDER HEIFERS:
Medium and Large 1

300-400 lbs.	235.00-247.00
400-500 lbs.	232.00-252.00
500-600 lbs.	222.00-250.00
600-700 lbs.	200.00-232.50

SLAUGHTER BULLS: Yield Grade 1-2 1350-2470 lbs 112.50-124.00; high dressing 124.00-141.00

SLAUGHTER COWS: Breaking and Boning, (70-85% lean) 89.00-98.50; high dressing 98.00-115.00; low dressing 81.00-90.00. Lean (85-90%) 81.00-91.50

SLAUGHTER STEERS: Choice and Prime 2-4 180.00-183.50. Choice 2-3 173.00-178.50. Select and Choice 1-3 173.50. Select and Choice 2-3 169.00-173.00

SLAUGHTER HEIFERS: Choice 2-3 176.50-179.50. Select and Choice 2-3 163.00-170.00.

BRED COWS: Medium and Large 1-2 2-4 yrs 1048 lbs 2nd stage 1860.00; 2-8 yrs 1152-1450 lbs 2nd stage 1380.00-1650.00, 3rd stage 1800.00 per head

COW/CALF PAIRS: Medium and Large 1 2-8 yrs 1000-1200 lbs with 150-300 lb calves 2250.00-2625.00. Medium and Large 1-2 - 8 yrs 1000-1100 lbs with 150-300 lb calves 1910.00-1975.00 per pair

NORTH CENTRAL MISSOURI WEEKLY SUMMARY

(Macon, Unionville, Green City, New Cambria)

Receipts: 4,582 Week ago: 2,057 Year ago: 3,362

Compared to last week, steers and heifers uneven from 5.00 lower to 5.00 higher, spots up to 10.00 higher Slaughter cows steady to 6.00 higher.

*Some sale barns on a bi-weekly schedule and may not have a sale each week.

FEEDER STEERS:
Medium and Large 1

400-500 lbs.	260.00-295.50
500-600 lbs.	254.50-285.00
600-700 lbs.	223.00-256.50
800-900 lbs.	206.00-216.00

FEEDER HEIFERS:
Medium and Large 1

300-400 lbs.	230.00-280.00
400-500 lbs.	211.00-274.00
500-600 lbs.	208.00-250.00
600-650 lbs.	203.00-228.00

SLAUGHTER BULLS: Yield Grade 1-2 1380-2430 lbs 103.00-129.50

SLAUGHTER COWS: Breaking and Boning, (70-85% lean) 83.00-101.00; high dressing 97.50-112.00. Lean (85-90%) 67.50-90.00

BRED COWS: Medium and Large 1-2 2-8 yrs 1173-1525 lbs 2nd stage 1350.00-1625.00, 3rd stage 1550.00-1760.00; 5-8 yrs 1350-1450 lbs 3rd stage 1275.00-1400.00 per head

COW & CALF PAIRS: Medium and Large 1 2-8 yrs 1200-1400 lbs with 150-300 lb calves 1975.00-2250.00 per pair

SOUTHEAST MISSOURI WEEKLY SUMMARY

(Jackson and Farmington)

Receipts: 2,133 Week ago: 1,248 Year ago: 2,795
 Compared to last week, 400-500 lb steers 10.00 to 14.00 higher, rest of the steers steady to 6.00 higher. Heifers steady to 6.00 higher. Slaughter cows steady to 2.00 higher and bulls 2.00 higher.

FEEDER STEERS:
 Medium and Large 1

300-400 lbs. 247.50-270.00
 400-500 lbs. 240.00-280.00
 500-600 lbs. 234.00-262.00
 600-700 lbs. 196.00-227.00
 700-800 lbs. 180.00-206.00
 800-900 lbs. 180.00-195.00

FEEDER HEIFERS:
 Medium and Large 1

300-400 lbs. 217.50-240.00
 400-500 lbs. 190.00-238.50
 500-600 lbs. 185.00-215.00
 600-700 lbs. 170.00-200.00
 700-800 lbs. 174.00-188.00
 Pkg 837 lbs. 175.00

SLAUGHTER BULLS: Yield Grade 1-2 1060-2170 lbs. 95.00-108.00; high dressing 107.00-127.00

SLAUGHTER COWS: Breaking and Boning (75-85% lean) 80.00-91.00; high dressing 91.00-100.00. Lean (85-90% lean) 62.50-76.00

BRED COWS: Medium and Large 2 2-8 yrs 1060-1205 lbs 2nd stage 850.00-1000.00; 2-8 yrs 995-1080 lbs 3rd stage 1300.00-1375.00 per head

COW & CALF PAIRS: Medium and Large 2 2-8 yrs 1100-1200 lbs with 150-300 lb calves 1200.00-1800.00; >8 yrs 1150-1400 lbs with 150-300 lb calves 1400.00-1500.00 per pair

EAST CENTRAL MISSOURI WEEKLY SUMMARY

(Cuba, Vienna)

Receipts: 4,227 Week ago: 3,960 Year ago: 3,991
 Compared to last week, steers steady to 8.00 higher. Heifers under 500 lbs from 3.00 lower to 3.00 higher, over 500 lbs steady to 5.00 higher. Slaughter cows 3.00 lower to 2.00 higher.

FEEDER STEERS:
 Medium and Large 1

300-400 lbs. 272.00-302.00
 400-500 lbs. 255.50-288.50
 500-600 lbs. 240.00-277.50
 600-700 lbs. 216.00-255.50
 700-800 lbs. 212.50-233.50

FEEDER HEIFERS:
 Medium and Large 1

300-400 lbs. 230.00-256.50
 400-500 lbs. 224.00-251.00
 500-600 lbs. 218.00-239.00
 600-700 lbs. 214.00-227.00
 Few 700-750 lbs. 192.00

SLAUGHTER BULLS: Yield Grade 1-2 1270-2110 lbs 105.50-124.00; few high dressing 125.00-138.00; low dressing 92.00-104.00.

SLAUGHTER COWS: Breaking and Boning, (70-85% lean) 87.00-97.50; high dressing 98.50-102.50; low dressing 73.00-85.00. Lean (85-90%) 80.00-89.50

BRED COWS: Medium 1-2 2-4 yrs 835-865 lbs 2nd to 3rd stage 1010.00-1180.00 per head

COW & CALF PAIRS: Scarce

NORTHWEST MISSOURI WEEKLY SUMMARY

(Tina)

Receipts: 2,375 Week ago: 1,510
 Compared to last week, steers 3.00 to 6.00 lower. Heifers under 550 lbs 7.00 to 11.00 lower, over 550 lbs steady to 3.00 higher. Slaughter cows steady to 2.00 higher.

FEEDER STEERS:
 Medium and Large 1

300-400 lbs. 280.00-301.00
 400-500 lbs. 281.00-295.00
 500-600 lbs. 256.50-282.00
 600-650 lbs. 247.00-257.00
 750-800 lbs. 197.00-210.00
 226 hd 826 lbs. 204.00

FEEDER HEIFERS:
 Medium and Large 1

300-400 lbs. 235.00-250.00
 400-500 lbs. 233.50-245.00
 500-600 lbs. 221.50-236.50
 600-700 lbs. 197.00-221.00
 750-800 lbs. 184.00-186.50

SLAUGHTER BULLS: Yield Grade 1-2 1305-2220 lbs 115.00-118.00; few high dressing 122.00-125.00

SLAUGHTER COWS: Breaking and Boning, (70-85% lean) 85.00-99.00; high dressing 98.00-105.00; low dressing 87.00-91.50. Lean (85-90%) 80.00-86.00

BRED COWS: Scarce

COW & CALF PAIRS: Scarce

AFTERNOON NATIONAL SLAUGHTER CATTLE REVIEW

So far for Friday in the Texas Panhandle, Nebraska and Western Cornbelt negotiated cash trading has been slow on light to moderate demand. In the Texas Panhandle, compared to last reported market on Thursday, live purchases traded steady at 170.00. In Nebraska, thus far for the week, live purchases have traded 2.00 higher at 178.00 and dressed purchases have traded steady to 2.00 higher from 280.00-282.00. In the Western Cornbelt not enough live and dressed purchases for a full market trend. Thursday was the last reported live purchase market at 178.00. Last week dressed purchases traded at 280.00, on a light test. In Kansas negotiated cash trading has been limited on light demand. The last reported market was on Thursday with live purchases at 170.00.

Negotiated Cash Sales:					
Confirmed:	19,014	Week Ago:	2,398	Year Ago:	923
Week to date:	63,049	Week Ago:	76,698	Year Ago:	86,310

Live Basis	Steers	Heifers
Over 80% Choice	170.00-180.00, avg 178.15	170.00-180.00, avg 176.50
65-80% Choice	170.00-176.00, avg 170.53	169.50-170.00, avg 169.98
35-65% Choice	169.50-170.00, avg 169.88	170.00
0-35% Choice	-	-
Total All Grades	169.50-180.00, avg 175.34	169.50-180.00, avg 173.20
Dressed Basis		
Over 80% Choice	280.00-282.00, avg 281.92	282.00
65-80% Choice	280.00-282.00, avg 281.54	282.00
35-65% Choice	-	282.00
0-35% Choice	-	-
Total All Grades	280.00-282.00, avg 281.83	282.00

All Beef Type Steers/Heifers	Head	Avg Wt	Price Range	Wtd Avg
Live FOB	13,747	1372.2	168.00-180.00	175.39
Live Del	76	1275	179.00	179.00
Dressed Del	5,027	877.6	280.00-284.00	281.93
Dressed FOB	-	-	-	-

WEEKLY COMMODITY FUTURES TRENDS

Compared to last week, Live Cattle 1.32 to 2.30 higher, Lean Hogs 1.08 to 4.57 lower, Feeder Cattle May 0.80 higher, and others 4.52 to 6.13 higher.

Daily Futures Closes

	Mon.	Tues.	Wed.	Thu.	Fri.
Cattle					
Jun	164.32	163.87	164.82	165.52	165.72
Aug	162.75	162.47	163.12	163.62	164.30
Oct	167.12	166.92	167.07	167.75	168.45
Dec	171.25	171.12	170.87	171.62	172.27
Feb	175.40	175.22	174.95	175.72	176.32
Lean Hogs					
Jun	86.15	87.20	84.87	85.30	83.02
Jul	87.50	88.12	85.55	85.60	83.12
Aug	87.72	87.87	84.85	83.90	81.50
Oct	79.10	79.05	76.70	75.90	73.95
Dec	75.87	75.25	73.60	73.40	71.65
Fdr Cat					
May	206.50	205.70	204.55	206.10	206.27
Aug	231.05	231.47	231.15	234.50	235.10
Sep	233.85	234.32	233.95	237.22	237.95
Oct	235.77	236.22	235.67	238.77	239.45
Nov	236.15	236.50	235.50	238.67	239.37
Milk					
May	16.22	16.22	16.19	16.18	16.19
Jun	16.41	16.33	16.32	15.92	16.06
Jul	17.31	17.25	17.08	16.65	16.63

WEEKLY COMMODITY GRAIN FUTURES TRENDS

Compared to last week, Soybeans 0.48 to 0.83 lower, Wheat 0.23 to 0.30 lower, Corn 0.09 to 0.32 lower, KC Wheat 0.38 to 0.53 lower, Soybean Meal 14.60 to 23.80 lower.

Daily Grain Futures Closes

	Mon.	Tues.	Wed.	Thu.	Fri.
Soybeans					
Jul	1400 3/4	1364	1337	1333 1/4	1307 1/4
Aug	1328 1/4	1298 1/4	1274 3/4	1269 1/2	1248
Sep	1252 3/4	1225 1/2	1206	1203 3/4	1186 1/4
Nov	1231 1/4	1207	1187 1/2	1187	1175 1/2
Jan	1241 1/4	1217 1/4	1198	1197 1/4	1185 3/4
Wheat					
Jul	660 3/4	647 1/2	625 1/2	611 3/4	605
Sep	672	660 1/4	637 3/4	624 1/2	617
Dec	688	677	655 3/4	642 1/2	635 1/2
Mar	699 1/2	689 1/4	669 3/4	657 1/2	650 3/4
Jul	704 3/4	695	676 3/4	655 1/4	659 1/4
Corn					
Jul	592 1/2	581 1/4	561 1/2	555 1/4	554 1/2
Sep	518	506 1/2	497	495 1/2	494 1/2
Dec	515	505 1/4	499	500 3/4	499 3/4
Mar	525 1/4	515 3/4	509 1/2	511 1/4	510
May	531 1/4	522	515 3/4	517 1/4	515 3/4
KC Wheat					
Jul	898 1/4	895 1/4	885 1/2	857	824 1/4
Sep	885 1/2	884 1/2	873 1/4	845 1/2	815 1/2
Dec	873 3/4	876 1/4	864 1/4	836 1/2	807
Mar	861 1/2	863 3/4	851 3/4	823	796
May	851 1/2	852 1/2	838 1/2	809	784
SB Meal					
Jul	430.90	426.90	425.30	414.10	409.10
Aug	423.30	419.60	416.80	409.00	402.10
Sep	411.00	407.70	403.60	397.40	391.50
Oct	398.90	395.00	390.20	386.00	380.50
Dec	395.20	391.00	386.80	383.00	377.40

MISSOURI GRAIN WEEKLY TRENDS

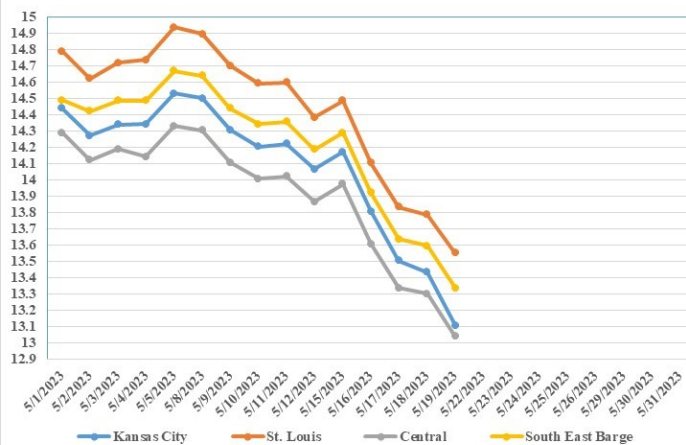
Compared to last week, Soybeans 0.83 to 0.98 lower, Wheat 0.10 to 0.43 lower, Corn 0.30 to 0.55 lower, Sorghum 0.22 to 0.32 lower.

Area	#1 Soybeans	#2 Soft Wheat	#2 Corn	#2 Grain Sorghum
Kansas City				
Friday**	13.90-14.15	6.50	6.31-6.56	6.36
Monday	14.01-14.26	6.76	6.43-6.63	6.43
Tuesday	13.64-13.89	6.63	6.31-6.51	6.31
Wednesday	13.37-13.62	6.51	6.07-6.32	6.12
Thursday	13.33-13.48	6.37	6.00-6.25	6.05
Friday	12.97-13.17		6.00-6.25	6.05
St. Louis				
Friday**	14.38-14.39	6.15-6.45	6.48-6.24	6.82-6.84
Monday	14.49	6.61-6.71	6.53	6.89-6.91
Tuesday	14.10-14.11	6.48-6.58	6.29-6.36	6.77-6.79
Wednesday	13.82-13.85	6.23-6.26	5.94-5.96	6.67
Thursday	13.78-13.79	6.09-6.12	5.90-5.93	6.60
Friday	13.55		5.95-6.00	6.60
Central				
Friday**	13.85-13.90	6.35	6.31-6.36	---
Monday	13.96-14.01	6.61-6.66	6.38-6.43	---
Tuesday	13.59-13.64	6.48-6.53	6.26-6.31	---
Wednesday	13.32-13.37	6.26-6.31	6.07-6.12	---
Thursday	13.28-13.33	6.12-6.17	6.00-6.05	---
Friday	13.02-13.07		6.00-6.05	---
S.E. MO				
Friday**	14.15-14.25	---	6.36	---
Monday	14.26-14.36	---	6.38-6.43	---
Tuesday	13.89-13.99	---	6.19-6.26	---
Wednesday	13.57-13.72	---	5.97	---
Thursday	13.53-13.68	---	5.85-5.90	---
Friday	13.27-13.42	---	5.85-5.90	---

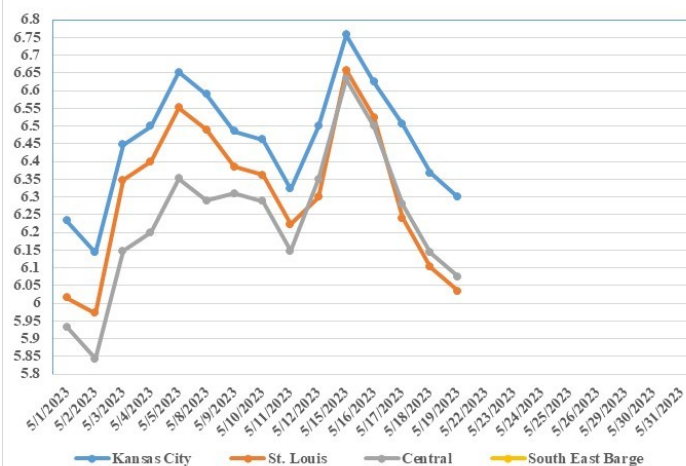
(PRICES PER BUSHEL) *NEW CROP **PREVIOUS WEEK'S PRICES
*Bids calculated using Kansas City, St. Louis, and St. Joseph bids

MONTHLY GRAIN CROP

May 2023 Soybean Bids



May 2023 Wheat Bids



May 2023 Corn Bids



*Axis value ranges may be updated to reflect data points.

**WHOLESALE FEEDSTUFFS PRICES
(DOLLARS PER TON-BULK BASIS)**

Area	Soybean Hulls Pellets	Soybean Meal 46.5-48%	Corn Gluten Pellets 21%	Wheat Middlings
Kansas City	190.00	405.10	268.00	158.33
St. Louis	n/a	n/a	242.50	153.33

CATTLE ON FEED

United States Cattle on Feed Down 3 Percent

Cattle and calves on feed for the slaughter market in the United States for feedlots with capacity of 1,000 or more head totaled 11.6 million head on May 1, 2023. The inventory was 3 percent below May 1, 2022.

Placements in feedlots during April totaled 1.75 million head, 4 percent below 2022. Net placements were 1.70 million head. During April, placements of cattle and calves weighing less than 600 pounds were 360,000 head, 600-699 pounds were 245,000 head, 700-799 pounds were 410,000 head, 800-899 pounds were 458,000 head, 900-999 pounds were 205,000 head, and 1,000 pounds and greater were 70,000 head.

Marketings of fed cattle during April totaled 1.70 million head, 10 percent below 2022.

Other disappearance totaled 51,000 head during April, 6 percent below 2022.

MISSOURI CROP PROGRESS AND CONDITION 5/15/23

	Week Ending			2018-2022 Average
	05/14/23	05/07/23	05/14/22	
Corn Planted	96	92	60	73
Corn Emerged	78	56	27	46
Soybeans Planted	62	50	17	24
Soybeans Emerged	36	21	5	8
Cotton Planted	69	40	43	41
Rice Planted	92	85	52	66
Rice Emerged	77	61	14	41
Winter Wheat Headed	77	40	57	64
Alfalfa hay 1st cutting	5	-	10	8
Other hay cut	2	-	-	-

MISSOURI WEEKLY HAY SUMMARY 05/18/23

The official drought monitor showed some improvement this week. Still over 60 percent of the state is currently showing. Rains for many have sure provided hope though. Not everyone has been on the receiving end but many have been able to measure moisture from the last couple of weeks in inches. Hay is still looking short and that won't change overnight but if there was ever a million dollar saving rain this might have been it. Corn planting is more or less complete and beans are over 60 percent in the ground now. A lot of wheat, rye and the like has been wrapped and filling fence rows now. Dry hay is starting to be baled around although memorial weekend is typically when a lot of folks start hay season. The supply of hay is light and demand is light to moderate.

- Alfalfa - Supreme 250.00-300.00, small square 10.00-15.00 per bale
- Alfalfa - Premium 180.00-250.00
- Alfalfa - Good 150.00-180.00, small square 5.00-9.00 per bale
- Alfalfa - Fair 125.00-150.00
- Alfalfa/grass mix - Good/Premium small square 5.00-9.00 per bale
- Mixed grass - Good/Premium 125.00-175.00
- Mixed grass - Fair/Good 100.00-150.00, small square 5.00-8.00 per bale
- Mixed grass - Fair 50.00-100.00 per large round bale
- Wheat straw - 4.00-7.00 per small square bale

Please Note: The above volumes (tonnage, acres, and bales) listed on this USDA LPGMN report are for confirmed trades only, it does not include estimated volume (tonnage) for bids or offers to the trade. The current hay directory can be found at: [Hay Directory](#). List your hay for sale at: [Hay Listing Online Form](#). Explanation of Hay Quality Guidelines: [Hay Quality Designation Guidelines](#). Glossary of Terms: [Livestock, Poultry, and Grain Hay Terms](#)

MISSOURI WEEKLY SHEEP/GOAT AUCTION SUMMARY

Receipts: 1,587 Week Ago: 3,227 Last Year: 785

SHEEP: Feeder lambs Small and Medium 1-2 hair 20-30 lbs 205.00-270.00, replacement 280.00-310.00; 30-50 lbs 150.00-215.00, thin 130.00-145.00.

Slaughter lambs Choice and Prime 1-3 w/s 60-70 lbs 150.00. Choice and Prime 1-2 woolled 45-95 lbs 140.00-175.00. Choice and Prime 1-2 hair 40-90 lbs 145.00-175.00; 100-125 lbs 170.00-190.00. Choice and Prime 1-2 hair 50-80 lbs 170.00-205.00. Choice 1-3 hair 50-75 lbs 150.00-170.00; pkg 88 lbs 142.50. Good 1-2 hair 50-70 lbs 122.50-140.00. Slaughter ewes Good 2-3 pkg 170 lbs 80.00. Utility and Good 2 100-155 lbs 80.00-90.00. Good 2-3 hair 75-95 lbs 105.00-115.00. Utility and Good 1-3 hair 70-175 lbs 75.00-100.00. Cull and Utility 1-2 hair 90-130 lbs 65.00-75.00. Bucks 1-2 few 150-170 lbs 90.00-115.00. Bucks 1-2 hair 115-145 lbs 95.00-117.50.

Replacement sheep: Ewes Small and Medium 1-2 hair 10 hd 1-2 yrs 86 lbs exp 132.50. Families: Small and Medium 1-2 2-4 yrs 115 lbs exp with <20 lb lambs 190.00 per fam; 4-6 yrs 90 lbs exp with <20 lb lambs 170.00 per fam.

GOATS: Feeder kids Selection 1 30-40 lbs 300.00-350.00; 40-50 lbs 295.00-305.00. Selection 2 20-30 lbs 190.00-250.00; 30-50 lbs 202.50-295.00. Selection 3 30-50 lbs 120.00-195.00. Wether kids Selection 3 pkg 45 lbs 135.00.

Slaughter kids Selection 1 50-65 lbs 285.00-287.50. Selection 2 50-80 lbs 230.00-275.00. Selection 3 pkg 53 lbs 145.00. Slaughter nannies/does Selection 1-2 55-80 lbs 90.00-180.00, thin 60.00-65.00; 80-115 lbs 70.00-125.00, thin 60.00-70.00. Slaughter bucks/billies Selection 1-2 80-135 lbs 100.00-192.50; pkg 150 lbs 97.50-150.00. Wethers Selection 1-2 pkg 80 lbs 242.50; 100-115 lbs 250.00-265.00.

Replacement goats: Nannies/does Selection 1-2 1-2 yrs 80-90 lbs exp 155.00-210.00; 2-4 yrs 110-120 lbs exp 140.00-195.00. Families Selection 1-2 2-4 yrs 82 lbs exp with <20 lb kids 225.00/fam; 4-6 yrs 72 lbs exp with <20 lb kids 150.00/fam.

Explanatory Notes: Stage - Represents estimated lambing/kidding period (Open, Exp=exposed, Bred, Fall = Sep-Nov, Win = Dec-Feb, Spr = Mar-May, Sum=Jun-Aug; w/s = woolled and shorn; /hd= per head; /fam=per family All price CWT unless otherwise noted.

MISSOURI DROUGHT MONITOR

Date	None	D0	D1	D2	D3	D4
05/16/23	39.64	28.04	20.43	11.17	0.72	0
05/09/23	15.30	48.09	16.99	17.49	2.13	0
05/17/22	100.00	0	0	0	0	0

Reflects percentage of Missouri impacted by drought. D0 Abnormally Dry; D1 Moderate Drought; D2 Severe Drought; D3 Extreme Drought; D4 Exceptional Drought

NATIONAL DIRECT DELIVERED FEEDER PIG REPORT

05/19/23 Receipts: 122,200 Week ago: 86,131 Year Ago: 79,490 Early weaned pigs and feeder pigs steady. Early weaned pigs 10-12 lbs. basis: Cash 68,380 head 2.50-18.00, weighted average 10.92 Formula 44,245 head 15.15-50.17, weighted average 36.48 Feeder pigs 40 pounds basis: Cash 9,575 head 34.00-49.00, weighted average 42.22

NATIONAL DAILY DIRECT PRIOR DAY HOG REPORTS FOR 05/19/23

BARROWS AND GILTS (Carcass Basis): 7,242 head Base Carcass Price 74.00-90.00, weighted average 79.10

SOWS (Live Basis): 6,433 head 300-500 lbs. 8.00-31.00 Over 500 lbs. 10.00-33.00

MISSOURI WEEKLY DIRECT SLAUGHTER CATTLE REPORT 05/17/23

Weekly Receipts: 200 Week ago: 440 Year ago: 320 Trade as of Friday morning: trade is light with flat dressed sales 1.00 to 2.00 higher and grid dressed sales steady.

LIVE STEERS & HEIFERS: No sales reported **DRESSED STEERS & HEIFERS:** Load Fri morn flat 281.00; Fri afternoon 2 loads 282.00 flat

GRADE AND WEIGHT (Grid): 2 loads Thu 286.00

Click here for the current [National Crop Progress](#)
Click here for the current [Missouri Crop Progress](#)