

Weekly Market Summary

Published by:
Missouri Department of Agriculture
Ag Business Development Division
Market News Program



Chris Chinn, Director
 Jill Wood, Division Director
 Tony Hancock, Editor
<http://www.ams.usda.gov/marketnews.htm>
<http://www.ams.usda.gov/marketnews.htm>

Michael L. Parson, Governor

Volume XLIII, Number 25 ♦ P.O. Box 630, Jefferson City, MO 65102 ♦ (573) 751-4211 ♦ Monday, June 26, 2023

MISSOURI WEEKLY FEEDER CATTLE WEIGHTED AVERAGE REPORT

Receipts: 36,605 Week ago: 39,090 Year ago: 24,547
 Steers and Heifers Medium and Large 1—Weighted average weights and prices

STEERS: Medium and Large 1

316 lbs. 283.85	521 lbs. 276.22	724 lbs. 231.36	910 lbs. 212.91
377 lbs. 291.68	574 lbs. 270.89	769 lbs. 232.80	956 lbs. 213.00
427 lbs. 283.30	622 lbs. 257.95	817 lbs. 217.97	
479 lbs. 281.66	671 lbs. 248.57	876 lbs. 220.62	

HEIFERS: Medium and Large 1

330 lbs. 251.55	529 lbs. 243.97	726 lbs. 220.20	921 lbs. 184.62
381 lbs. 256.32	569 lbs. 237.91	767 lbs. 209.49	960 lbs. 187.20
424 lbs. 249.87	620 lbs. 226.98	808 lbs. 201.80	
481 lbs. 252.71	673 lbs. 228.21	874 lbs. 200.22	

MISSOURI STEER (HEIFER) STOCKER FORMULA 06/25/2023

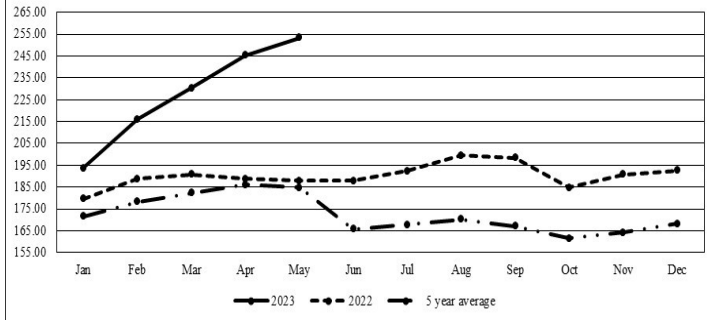
Monday's Missouri Stocker formula consists of **8055 (8542)** head with a weighted average weight of **543.10 (542.08)** lbs. and a price value of **263.85 (233.58)**, 1.03 lower (3.30 lower) than last week. This a rolling seven day calculated weighted value which combines all Feeder Steers reported by MDA/USDA Market News Service weighing from 400-649 lbs. in the Medium and Large 1 and Medium and Large 1-2 frame and muscle classifications, including all comment cattle except Brahman X. Heifer values are in parentheses.

MISSOURI WEEKLY CATTLE AUCTION SUMMARY

Compared to last week, feeders from 500 lbs. and up were mixed and sold from 5.00 lower to 3.00 higher, light weight calves under 500 lbs. sold 5.00 to 10.00 lower. The supply of feeders was moderate to heavy as barns continue to see larger than usual numbers for this time of year. Quality has been all across the spectrum still some good cattle out there but many have already been sold, unless they are showing up to be resold again after gaining a few lbs. As a whole though most auctions are seeing lower than usual quality with lots of smaller consignments. Demand was moderate. Summer heat has become a concern for shipping and receiving cattle and among a few other factors this put pressure on the market especially the very light calves many of which are fresh of their mommas. The monthly cattle on feed report was released on Friday and looking at the numbers the report had to be seen as bearish. Marketings were basically in line with estimates, on feed number were slightly above and placements were reported at 105 percent when the average estimate at 101.7. Grain markets have been very volatile as drought conditions across the grain belt worsen and future traders look for any reason they can to make trades. Boxed beef cutouts turned and headed lower this week. Choice closed at 334.01, down 9.08 and select closed at 299.96, down 10.99 compared to last Friday. Negotiated feedlot sales as of the Friday afternoon report totaled near 77k. Fed cattle prices were lower again this week. Live sales were reported from 180.00-185.00 and dressed sales mostly at 290.00. The Missouri Stocker Formula consist of 8,055 head with a weighted average weight of 543.10 lbs. and a price value of 263.85, 1.03 lower than last week. The steer/heifer spread is 30.27.

The Weekly Market Summary, as well as historical summaries, are available on our website <https://agmarketnews.mo.gov/summaries>
 Market News Hotline: 1-573-522-9244

Missouri Stocker Formula - Steers

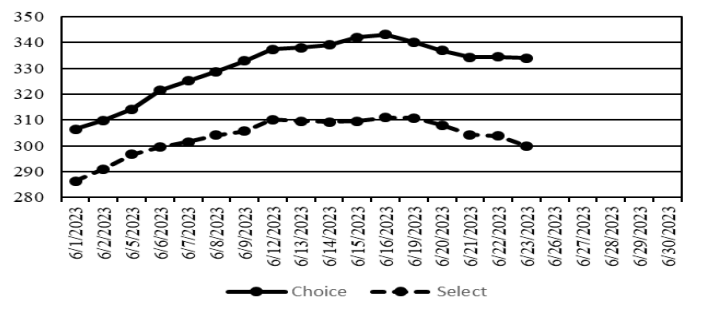


*Graph is updated the first Monday of each month. Axis value ranges may be updated to

NATIONAL BOXED BEEF CUTOUT/BOXED BEEF CUTS

DATE	CHOICE	SELECT	TOTAL LOADS
06/19	340.14	310.76	101
06/20	336.91	307.93	121
06/21	334.25	304.25	139
06/22	334.47	303.80	98
06/23	334.01	299.96	78
5 Day Simple Average	335.96	305.34	

Boxed Beef Cuts June 2023



*Axis value ranges may be updated to reflect data points.

WEEKLY LIVESTOCK SLAUGHTER 06/23/23

	CATTLE	HOGS	SHEEP
Week to Date:	649,000	2,372,000	34,000
Last Week:	634,000	2,330,000	34,000
Last Year:	665,000	2,312,000	33,000

SOUTHWEST MISSOURI WEEKLY SUMMARY

(Joplin and Springfield)

Receipts: 17,706 Week ago: 16,829 Year ago: 11,429
Compared to last week, steers and heifers uneven from 5.00 lower to 5.00 higher. Slaughter cows steady to 4.00 lower. Slaughter bulls steady.

FEEDER STEERS:
Medium and Large 1

300-350 lbs.	285.00-302.00
400-500 lbs.	267.00-302.00
500-600 lbs.	258.00-289.00
600-700 lbs.	240.00-265.50
700-800 lbs.	212.00-241.00
800-900 lbs.	203.00-227.00
900-1000 lbs.	208.00-213.00

FEEDER HEIFERS:
Medium and Large 1

350-400 lbs.	267.50-275.00
400-500 lbs.	241.00-262.00
500-600 lbs.	231.00-256.00
600-700 lbs.	200.00-240.00
700-800 lbs.	186.00-225.00
800-900 lbs.	185.50-205.00
900-950 lbs.	185.50-191.00

FEEDER HOLSTEIN STEERS
Large 3

Scarce

Scarce

SLAUGHTER COWS: Breaking and Boning (70-85% lean) 90.00-103.50, high dressing 99.00-111.00; low dressing 85.00-94.00. Lean (85-90%) 78.00-96.00

SLAUGHTER BULLS: Yield Grade 1-2 1160-2705 lbs. 105.00-126.50; high dressing 124.00-144.50; low dressing 91.00-107.50

BRED COWS: Medium and Large 1 2-8 yrs 1280-1340 lbs 2nd to 3rd stage 1600.00-1800.00. Medium and Large 1-2 2-8 yrs 990-1305 lbs 2nd to 3rd stage 1050.00-1500.00, 1st stage 1450.00 per head

COW & CALF PAIRS: Medium and Large 1 10 pairs 2-8 yrs 1230 lbs with 150-300 lb calves 2000.00. Medium and Large 1-2 2-4 yrs 985 lbs with <150 lb calves 1710.00; 2-8 yrs 1115 lbs with <150 lb calves 1500.00; 2-8 yrs 1020-1520 lbs with 150-300 lbs calves with 1775.00-2150.00 per pair

SOUTH CENTRAL MISSOURI WEEKLY SUMMARY

(West Plains, Phillipsburg)

Receipts: 6,966 Week ago: 7,083 Year Ago: 4,175
Compared to last week feeders sold steady to 10.00 higher with some steers late week 15.00 higher. Slaughter cows sold steady to 4.00 lower.

FEEDER STEERS:
Medium and Large 1

300-400 lbs.	285.00-311.00
400-500 lbs.	265.00-294.00
500-600 lbs.	252.50-280.00
600-700 lbs.	237.00-264.00
700-800 lbs.	214.00-228.00
800-850 lbs.	205.00-214.00
900-950 lbs.	204.75-219.75

FEEDER HEIFERS:
Medium and Large 1

400-500 lbs.	236.00-265.00
500-600 lbs.	223.00-250.00
600-700 lbs.	216.00-228.50
700-800 lbs.	202.00-218.00
Pkg 809 lbs.	200.00

FEEDER HOLSTEIN STEERS
Large 3

Scarce

Scarce

SLAUGHTER COWS: Breaking and Boning (70-85% lean) 87.50-102.50, high dressing 100.00-114.00; low dressing 79.00-92.00. Lean (85-90%) 78.00-91.00

SLAUGHTER BULLS: Yield Grade 1-2 1110-2280 lbs. 107.50-123.00; high dressing 120.00-142.00; low dressing 88.00-110.00

BRED COWS: Medium and Large 1-2 2-8 yrs 1300-1400 lbs 2nd and 3rd stage 1450.00-11500.00 per head. Medium and Large 1-2 2-8 yrs 1000-1300 lbs 2nd and 3rd stage 1100.00-1425.00 per head.

COW & CALF PAIRS: Medium and Large 1-2 2-8 yrs 1050-1250 lbs baby to 300 lb calves 1550.00-1725.00 small pkg of high quality 1950.00 per pair.

BRED HEIFERS: Scarce

WEST CENTRAL MISSOURI WEEKLY SUMMARY

(Kingsville, Windsor, Butler)

Receipts: 6,854 Week ago: 7,630 Year ago: 3,707
Compared to last week, feeder sold 10.00 lower to spots of 5.00 higher. Slaughter cows sold steady to 3.00 lower although a few high dressing sold up to 5.00 higher.

FEEDER STEERS:
Medium and Large 1

300-400 lbs.	262.00-307.00
400-500 lbs.	268.00-299.00
500-600 lbs.	266.00-297.00
600-700 lbs.	246.00-274.00
700-800 lbs.	230.00-240.00
Pkg 812 lbs.	228.50

FEEDER HEIFERS:
Medium and Large 1

300-400 lbs.	232.00-271.00
400-500 lbs.	237.00-278.00
500-600 lbs.	235.00-263.00
600-700 lbs.	213.00-238.00
700-800 lbs.	198.00-235.25
850-900 lbs.	193.00-194.50

SLAUGHTER BULLS: Yield Grade 1-2 1300-2040 lbs 113.50-125.50; high dressing couple 124.50-141.00

SLAUGHTER COWS: Breaking and Boning (70-85% lean) 89.00-109.00, high dressing 103.00-116.50; low dressing 85.00-93.00. Lean (85-90%) 82.00-94.00

BRED COWS: Medium and Large 1-2 2-8 yrs 1034-1300 2nd stage 1300.00-1500.00 per head

COW & CALF PAIRS: Scarce

NORTHEAST MISSOURI WEEKLY SUMMARY

(Bowling Green, Kingdom City, Palmyra)

Receipts: 6,022 Week ago: 4,623 Year ago: 3,371
Compared to last week, steers steady to 2.00 lower, heifers steady to 5.00 higher, slaughter cows steady to 5.00 lower.

FEEDER STEERS:
Medium and Large 1

400-500 lbs.	273.00-312.50
500-600 lbs.	255.00-300.00
600-700 lbs.	236.50-269.50
700-800 lbs.	220.50-247.00
800-900 lbs.	217.50-228.75
Load 926 lbs.	214.85

FEEDER HEIFERS:
Medium and Large 1

400-500 lbs.	241.00-274.00
500-600 lbs.	230.00-267.00
600-700 lbs.	218.00-250.75
700-800 lbs.	217.50-229.75
800-900 lbs.	197.35-203.75
Load 960 lbs.	187.20

SLAUGHTER BULLS: Yield Grade 1-2 1350-2195 lbs 115.00-130.00; high dressing 129.00-141.00; low dressing 103.50-112.00

SLAUGHTER COWS: Breaking and Boning, (70-85% lean) 93.00-106.00; high dressing 105.50-126.50; low dressing 83.00-97.00. Lean (85-90%) 87.50-96.50

SLAUGHTER STEERS: Choice 2-3 180.50-185.50. Select and Choice 1-3 175.00-177.00

SLAUGHTER HEIFERS: Choice 2-3 181.50-185.50 Select and Choice 1-3 176.00-178.00

BRED COWS: Scarce

COW/CALF PAIRS: Scarce

NORTH CENTRAL MISSOURI WEEKLY SUMMARY

(Macon, Unionville, Green City, New Cambria)

Receipts: 897 Week ago: 3,632 Year ago: 1,098
Too few feeder cattle for a market comparison. Slaughter cows uneven with early week steady to firm and late week steady to 3.00 lower.

*Some sale barns on a bi-weekly schedule and may not have a sale each week.

FEEDER STEERS:
Medium and Large 1

Pkg 504 lbs.	275.00
650-700 lbs.	244.00-247.50

FEEDER HEIFERS:
Medium and Large 1 & 1-2

400-500 lbs.	229.00-235.50
500-600 lbs.	218.00-234.50
600-700 lbs.	222.50-230.00
700-750 lbs.	216.50-225.00

SLAUGHTER BULLS: Yield Grade 1-2 1535-2445 lbs 119.00-127.00; few high dressing 127.00-135.00

SLAUGHTER COWS: Breaking and Boning, (70-85% lean) 93.00-107.00; high dressing 104.00-117.50. Lean (85-90%) 85.50-97.50

BRED COWS: Medium and Large 1 2-4 yrs 1116 lbs 2nd stage 2225.00; >5 yrs 1297-1454 lbs 2nd stage 1475.00-1535.00 per head

COW & CALF PAIRS: Medium and Large 1 2-8 yrs 1375 lbs with >300 lb calves 2200.00.

SOUTHEAST MISSOURI WEEKLY SUMMARY

(Jackson and Farmington)

Receipts: 2,445 Week ago: 1,486 Year ago: 1,147
 Compared last week, feeders were mixed with spots from 5.00 lower to 8.00 higher. Slaughter cows sold steady to 1.00 higher.

FEEDER STEERS:
 Medium and Large 1

300-400 lbs.	240.00-290.00
400-500 lbs.	236.00-282.00
500-600 lbs.	244.00-279.00
600-700 lbs.	210.00-250.00
700-800 lbs.	202.00-226.00
900-950 lbs.	180.00-185.00

FEEDER HEIFERS:
 Medium and Large 1

300-400 lbs.	214.00-249.00
400-500 lbs.	210.00-241.00
500-600 lbs.	190.00-240.00
600-700 lbs.	185.00-214.00
700-800 lbs.	177.00-201.00

SLAUGHTER BULLS: Yield Grade 1-2 1145-2115 lbs. 92.00-110.00; high dressing 115.00-125.00

SLAUGHTER COWS: Breaking and Boning (75-85% lean) 82.00-92.00; high dressing 92.00-105.50. Lean (85-90% lean) 60.00-78.00

BRED COWS: Medium and Large 2 2-8 yrs 1031-1265 lbs 2nd stage 1200.00-1400.00 per head

COW & CALF PAIRS: Medium and Large 2 couple 2-8 yrs 900-1250 lbs with 150-300 lb calves 985.00-1500.00 per pair

EAST CENTRAL MISSOURI WEEKLY SUMMARY

(Cuba, Vienna)

Receipts: 2,449 Week ago: 5,206 Year ago: 1,821
 Compared to last week, feeders steady to 5.00 lower, spots up to 10.00 lower. Slaughter cows uneven with early week steady to 5.00 lower and late week full steady to firm.

FEEDER STEERS:
 Medium and Large 1

400-500 lbs.	267.00-300.00
500-600 lbs.	260.00-294.00
600-700 lbs.	242.00-282.00

FEEDER HEIFERS:
 Medium and Large 1

500-600 lbs.	230.00-246.00
600-700 lbs.	220.00-233.00

SLAUGHTER BULLS: Yield Grade 1-2 1295-2130 lbs 109.00-123.50; few high dressing 121.00-133.00; low dressing 100.00-119.00

SLAUGHTER COWS: Breaking and Boning, (70-85% lean) 88.50-104.00; high dressing 104.00-106.00. Lean (85-90%) 80.00-94.00

BRED COWS: Medium and Large 1-2 2-8 yrs 1010-1380 lbs 2nd to 3rd stage 1380.00-1520.00 per head

COW & CALF PAIRS: Scarce

NORTHWEST MISSOURI WEEKLY SUMMARY

(Tina)

Receipts: 1263 Week ago: 1,160 Year Ago: 1,104
 Compared to last week, feeders steady to 5.00 lower, although some feather weight heifers under 500 lbs sold 5.00 higher. Slaughter cows unevenly steady.

FEEDER STEERS:
 Medium and Large 1

400-500 lbs.	277.00-283.00
500-550 lbs.	282.00-287.00
600-650 lbs.	264.00-276.00

FEEDER HEIFERS:
 Medium and Large 1

450-500 lbs.	258.00-270.00
500-600 lbs.	226.00-255.50

SLAUGHTER BULLS: Yield Grade 1-2 1200-1855 lbs 111.50-128.50; few low dressing 95.00-104.50

SLAUGHTER COWS: Breaking and Boning, (70-85% lean) 94.00-106.50; high dressing 104.50-109.00. Lean (85-90%) 87.00-96.00

BRED COWS: Medium and Large 1-2 2-8 yrs 1050-1325 lbs 2nd and 3rd stage 110.00-1700.00 few Large 1-2 up to 1800.00 per head.

COW & CALF PAIRS: Medium and Large 1-2 small pkg over 5 years 1250 lbs with 150-300 lb calves 1300.00 per pair. Large 1-2 pkg 1390 lbs with baby to 150 lb calve 1525.00 per pair.

AFTERNOON NATIONAL SLAUGHTER CATTLE REVIEW

So far for Friday negotiated cash trading has been inactive on light demand in all feeding regions. Not enough purchases for a market trend. In Kansas the last reported market was on Thursday with live purchases at 180.00. In the Western Cornbelt the last reported market was on Thursday with live and dressed purchases from 184.00-185.00 and at 290.00, respectively. In Nebraska the last reported dressed purchase market was on Thursday at 290.00 and the last reported live purchase market was on Wednesday from 182.00-185.00. The last reported market in the Texas Panhandle was on Tuesday with live purchases at 180.00.

Negotiated Cash Sales:					
Confirmed:	1805	Week Ago:	9,832	Year Ago:	1,812
Week to date:	76,509	Week Ago:	48,497	Year Ago:	90,765
Live Basis		Steers		Heifers	
Over 80% Choice		182.00-185.00 avg 183.03		-	
65-80% Choice		180.00-180.00 avg 180.00		-	
35-65% Choice		174.00-174.00 avg 174.00		174.00-174.00 avg 174.00	
0-35% Choice		-		-	
Total All Grades		174.00-185.00 avg 180.09		174.00-174.00 avg 174.00	
Dressed Basis					
Over 80% Choice		-		-	
65-80% Choice		-		-	
35-65% Choice		-		-	
0-35% Choice		-		-	
Total All Grades		-		-	

<u>All Beef Type Steers/Heifers</u>	Head	Avg Wt	Price Range	Wtd Avg
Live FOB	1241	1366.90	174.00-185.00	180.54
Live Del	168	1280.70	183.00-186.00	185.32
Dressed Del	296	883.20	290.00-290.00	290.00
Dressed FOB	36	899.80	295.00-295.00	295.00

WEEKLY COMMODITY FUTURES TRENDS

Compared to last week, Live Cattle unch to 0.95 lower, Lean Hogs 1.58 lower on nearby to 0.95 higher on distant, Feeder Cattle 0.13 to 0.97 lower, except Jan 0.17 higher.

Daily Futures Closes

	Mon.	Tues.	Wed.	Thu.	Fri.
Cattle					
Jun	Holiday	177.12	177.25	177.65	177.50
Aug		169.70	169.75	171.15	170.77
Oct		173.45	172.95	174.67	174.50
Dec		177.40	176.92	178.67	178.77
Feb		181.22	180.90	182.72	182.80
Lean Hogs					
Jul	Holiday	95.85	94.75	91.85	91.27
Aug		93.20	92.77	89.97	89.67
Oct		81.60	81.05	79.85	79.97
Dec		77.45	77.32	76.45	76.67
Feb		82.02	82.10	81.40	81.77
Fdr Cat					
Aug	Holiday	232.15	227.72	230.67	233.95
Sep		235.62	231.42	234.52	237.70
Oct		237.77	233.90	237.17	240.15
Nov		238.80	235.07	238.45	241.17
Jan		238.35	234.87	238.32	240.87
Milk					
Jun	Holiday	14.94	14.95	14.89	14.93
Jul		15.37	15.78	15.29	15.35
Aug		16.29	16.63	16.18	16.12

WEEKLY COMMODITY GRAIN FUTURES TRENDS

Compared to last week, Soybean July 0.28 higher, others 0.04 to 0.36 lower, Wheat 0.42 to 0.47 higher, Corn 0.07 to 0.10 lower, KC Wheat 0.17 to 0.28 higher, Soybean Meal 4.90 to 6.00 lower.

Daily Grain Futures Closes

	Mon.	Tues.	Wed.	Thu.	Fri.
Soybeans					
Jul	Holiday	1477 1/4	1514 3/4	1500 1/2	1494 1/2
Aug		1408 1/4	1445	1418 1/4	1404
Sep		1353 1/4	1388	1347 3/4	1321 1/2
Nov		1342 3/4	1377	1339 1/2	1310
Jan		1350 3/4	1383 3/4	1348 1/4	1320
Wheat					
Jul	Holiday	695 3/4	734 1/2	739	733 1/4
Sep		708 3/4	748 1/4	752 3/4	746 1/2
Dec		724 1/4	764	770 1/2	761 3/4
Mar		735 3/4	774 1/4	782 1/4	773 1/2
May		741 1/2	776 3/4	784 1/2	776
Corn					
Jul	Holiday	643 3/4	671	660 1/2	630 3/4
Sep		593	623 1/2	617	584.60
Dec		597 1/2	628 3/4	620 3/4	588
Mar		606	635 3/4	628	596 1/4
May		609 3/4	637	629 3/4	599 1/4
KC Wheat					
Jul	Holiday	836	873 3/4	871	859
Sep		834 1/2	872	872 1/2	861 3/4
Dec		834 1/4	871 3/4	873 1/4	863
Mar		829	865 1/2	869 1/2	857 3/4
May		822 3/4	857 1/4	862 3/4	850 1/2
SB Meal					
Jul	Holiday	412.80	439.20	424.70	410.70
Aug		410.10	437.30	421.80	407.40
Sep		406.50	435.20	418.80	403.20
Oct		402.20	432.20	415.80	398.80
Dec		402.60	432.60	416.00	398.30

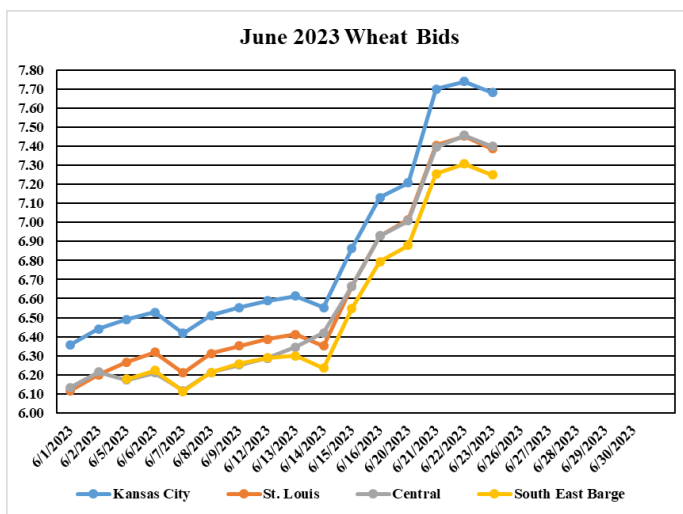
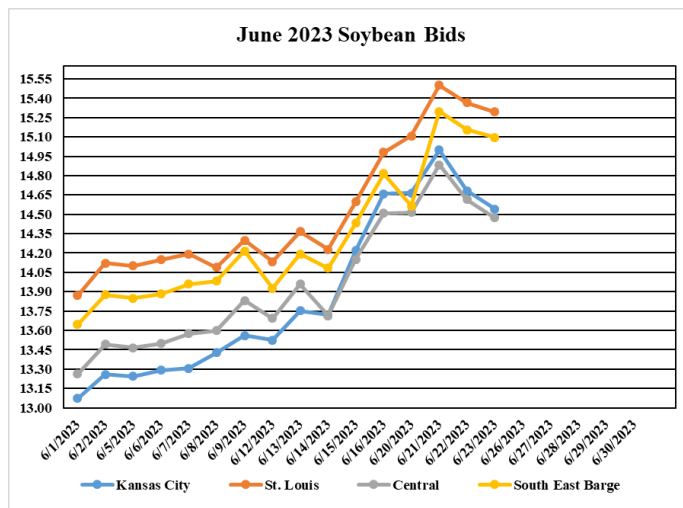
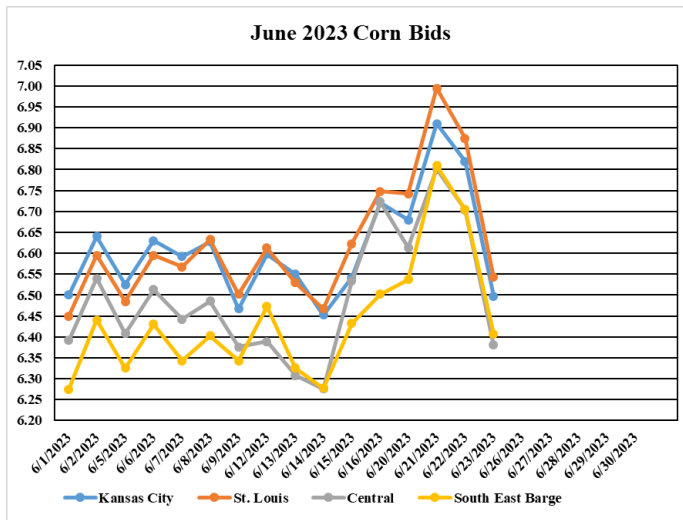
MISSOURI GRAIN WEEKLY TRENDS

Compared to last week, Soybeans 0.08 lower to 0.32 higher, Wheat 0.43 to 0.55 higher, Corn 0.20 to 0.26 lower, Sorghum 0.10 lower.

Area	#1 Soybeans	#2 Soft Wheat	#2 Corn	#2 Grain Sorghum
Kansas City				
Friday**	14.52-14.72	7.13	6.69-6.75	6.29
Monday	Holiday			
Tuesday	14.53-14.73	7.21	6.68	6.28
Wednesday	14.85-15.10	7.70	6.89-6.94	6.59
Thursday	14.58-14.78	7.74	6.82	6.52
Friday	14.44-14.64	7.68	6.49	6.19
St. Louis				
Friday**	14.96-14.99	6.93	6.72-6.77	7.45
Monday	Holiday			
Tuesday	15.10-15.11	7.01-7.02	6.74-6.75	7.49
Wednesday	15.50-15.51	7.41	6.99-7.00	7.76
Thursday	15.36	7.42-7.49	6.86-6.88	7.65
Friday	15.27-15.31	7.36-7.43	6.57-6.55	7.35
Central				
Friday**	14.47-14.52	6.73-7.03	6.69-6.74	---
Monday	Holiday			
Tuesday	14.48-14.58	6.81-7.11	6.53-6.73	---
Wednesday	14.85-14.90	7.20-7.50	6.74-6.89	---
Thursday	14.58-14.63	7.24-7.59	6.67-6.72	---
Friday	14.44-14.49	7.18-7.53	6.34-6.39	---
S.E. MO				
Friday**	14.81	6.74-6.83	6.50	---
Monday	Holiday			
Tuesday	14.92	6.85-6.91	6.54	---
Wednesday	15.30	7.23-7.30	6.81	---
Thursday	14.15	7.27-7.34	6.70	---
Friday	15.09	7.21-7.28	6.40	---

(PRICES PER BUSHEL) *NEW CROP **PREVIOUS WEEK'S PRICES
*Bids calculated using Kansas City, St. Louis, and St. Joseph bids

MONTHLY GRAIN CROP



*Axis value ranges may be updated to reflect data points.

WHOLESALE FEEDSTUFFS PRICES (DOLLARS PER TON-BULK BASIS)

Area	Soybean Hulls Pellets	Soybean Meal 46.5-48%	Corn Gluten Pellets 21%	Wheat Middlings
Kansas City	245.00	405.70	230.00	160.00
St. Louis	n/a	n/a	237.50	160.00

CATTLE ON FEED

United States Cattle on Feed Down 3 Percent Cattle and calves on feed for the slaughter market in the United States for feedlots with capacity of 1,000 or more head totaled 11.6 million head on June 1, 2023. The inventory was 3 percent below June 1, 2022. Placements in feedlots during May totaled 1.96 million head, 5 percent above 2022. Net placements were 1.88 million head. During May, placements of cattle and calves weighing less than 600 pounds were 380,000 head, 600-699 pounds were 295,000 head, 700-799 pounds were 480,000 head, 800-899 pounds were 505,000 head, 900-999 pounds were 215,000 head, and 1,000 pounds and greater were 80,000 head. Marketings of fed cattle during May totaled 1.95 million head, 2 percent above 2022. Other disappearance totaled 74,000 head during May, 3 percent below 2022.

LIVESTOCK SLAUGHTER

Record High Red Meat and Pork Production in May May 2022 contained 22 weekdays (including 1 holiday) and 4 Saturdays. May 2023 contained 23 weekdays (including 1 holiday) and 4 Saturdays. Commercial red meat production for the United States totaled 4.59 billion pounds in May, up 2 percent from the 4.49 billion pounds produced in May 2022. Beef production, at 2.31 billion pounds, was 1 percent above the previous year. Cattle slaughter totaled 2.84 million head, up 1 percent from May 2022. The average live weight was down 2 pounds from the previous year, at 1,349 pounds. Veal production totaled 4.2 million pounds, 7 percent below May a year ago. Calf slaughter totaled 24,200 head, down 12 percent from May 2022. The average live weight was up 13 pounds from last year, at 292 pounds. Pork production totaled 2.27 billion pounds, up 4 percent from the previous year. Hog slaughter totaled 10.6 million head, up 5 percent from May 2022. The average live weight was down 2 pounds from the previous year, at 289 pounds. January to May 2023 commercial red meat production was 22.7 billion pounds, down 1 percent from 2022. Accumulated beef production was down 4 percent from last year, veal was down 12 percent, pork was up 2 percent from last year, and lamb and mutton production was up 1 percent.

MISSOURI WEEKLY SHEEP/GOAT AUCTION SUMMARY

Receipts: 2712 Week Ago: 2039 Last Year: 2096

SHEEP: Feeder Lambs: Medium and Large 1-2 16 hd 43 lbs 170.00. Small and Medium 1-2 hair 27-50 lbs 170.00-205.00. Slaughter Lambs: Choice and Prime 1-3 woolled and shorn pkg 64 lbs 170.00; pkg 108 lbs 190.00. Choice and Prime 1-3 hair 50-80 lbs 170.00-195.00; 80-120 lbs 165.00-192.50. Choice 1-3 hair 55-70 lbs 150.00-165.00. Ewes Utility and Good 1-3 pkg 175 lbs 80.00 hair 100-135 lbs 70.00-75.00. Cull and Utility 1-2 hair 105-110 lbs 60.00-80.00. Bucks Hair 125-205 lbs 120.00-135.00. Replacement Ewes Small and Medium 1-2 hair 70-80 lbs less than a year open 155.00; 1-2 yrs 80-85 lbs exposed 150.00; open 130.00. 2-4 yrs 105-150 lbs fall bred 120.00-155.00, summer 140.00-170.00.

GOATS: Feeder Kids Selection 1 25-35 lbs 300.00-350.00; 40-5 lbs 290.00-300.00. Selection 2 24-50 lbs 220.00-290.00. Selection 3 34-45 lbs 165.00-210.00. Slaughter Classes Kids Selection 1 50-54 lbs 290.00-320.00; 60-70 lbs 305.00-360.00; pkg 77 lbs 350.00; few 90 lbs 310.00-335.00. Selection 2 50-65 lbs 205.00-280.00. Nannies Selection 1-2 70-95 lbs 110.00-160.00; thin 60-82.00. Bucks Selection 1-2 110-165 lbs 280.00-320.00. Wether Kids Selection 1 69-71 lbs 330.00-355.00. Selection 2 54-62 lbs 225.00-275.00. Replacement Classes Nannies Selection 1-2 80-95 lbs 1-2 yrs exposed 180.00-250.00; 2-4 yrs exposed 155 lbs 167.50. Nannies sold per head 2-4 years bred 117 lbs 185.00; 2-4 yrs exposed 83-87 lbs 150.00-190.00; 100-125 lbs 180.00-235.00; 165-172 lbs 280.00-310.00.

MISSOURI CROP PROGRESS AND CONDITION 06/18/23

	Week Ending			2018-2022 Average
	06/18/23	06/11/23	06/18/22	
Soybeans Planted	95	93	83	82
Soybeans Emerged	89	86	67	68
Cotton Squaring	38	22	6	21
Winter Wheat Harvested	46	21	29	28
Alfalfa hay 1st cutting	90	85	77	83
Alfalfa hay 2nd cutting	4	-	-	-
Other hay cut	69	59	49	54

MISSOURI WEEKLY HAY SUMMARY 06/22/23

Farmers around the state continue to burn a lot of fuel and clock long days as hay harvest is still going at a good clip. As of the latest report earlier this week about 70 percent of haying is complete now (first cutting of alfalfa is basically done). Drought conditions took another big jump and declined even more. Over 40 percent of the state is now listed in extreme to severe drought status. Some reports of guys already feeding hay as there is no grass in the worst areas. Hay demand is good to very good with a lot of buyer interest. The supply is light. Hay prices are steady to firm. The Missouri Department of Agriculture has a hay directory visit <http://mda.mo.gov/abd/haydirectory/> for listings of hay <http://agebb.missouri.edu/haylst/> Fescue seed harvest kicked off last weekend for most and is well underway now. Some buying stations reporting season will be short and could end about as fast as it began. Yields have been extremely varied not only buy region but even by fields. Dry conditions obviously have played a big part in that but some here and there seemed to get a rain at the right time while ones across the road didn't. Late frost also hit some areas especially fields in low areas harder than others. Application or lack of fertilizer as well as timing played a big part in yields this year as well. Some field reports have varied from a disappointing 50 lbs. to an acre all the way up to a pretty respectable 400 lbs. Overall though yields are much lower than the incredible seed year last year. Prices are above long term average but again lower than the records from last year. Prices are reported at mostly 0.88-0.90 cents per hundred weight.
 Alfalfa - Supreme 250.00-300.00, small square 10.00-15.00 per bale
 Alfalfa - Premium 180.00-250.00
 Alfalfa - Good 150.00-180.00, small square 5.00-9.00 per bale
 Alfalfa - Fair 125.00-150.00
 Alfalfa/grass mix - Good/Premium small square 5.00-9.00 per bale
 Mixed grass - Good/Premium 150.00-200.00
 Mixed grass - Fair/Good 100.00-150.00, small square 5.00-8.00 per bale
 Mixed grass - Fair 50.00-100.00 per large round bale
 Wheat straw - 4.00-7.00 per small square bale

Please Note: The above volumes (tonnage, acres, and bales) listed on this USDA LPGMN report are for confirmed trades only, it does not include estimated volume (tonnage) for bids or offers to the trade. The current hay directory can be found at: [Hay Directory](#). List your hay for sale at: [Hay Listing Online Form](#). Explanation of Hay Quality Guidelines: [Hay Quality Designation Guidelines](#).
 Glossary of Terms: [Livestock, Poultry, and Grain Hay Terms](#)

Explanatory Notes: Stage - Represents estimated lambing/kidding period (Open, Exp=exposed, Bred, Fall = Sep-Nov, Win = Dec-Feb, Spr = Mar-May, Sum=Jun-Aug; w/s = woolled and shorn; /hd= per head; /fam=per family
 All price CWT unless otherwise noted.

MISSOURI DROUGHT MONITOR

Date	None	D0	D1	D2	D3	D4
06/20/23	6.71	22.97	27.02	27.60	15.70	0
06/13/23	9.39	34.10	28.40	20.10	8.01	0.00
06/21/22	70.81	29.19	0	0	0	0

Reflects percentage of Missouri impacted by drought. D0 Abnormally Dry; D1 Moderate Drought; D2 Severe Drought; D3 Extreme Drought; D4 Exceptional Drought

NATIONAL DIRECT DELIVERED FEEDER PIG REPORT

06/23/23 Receipts: 113,177 Week ago: 81,376 Year Ago: 67,545
 Early weaned pigs 1.00 lower and feeder pigs steady
 Early weaned pigs 10-12 lbs. basis: Cash 61,300 head 5.00-18.00, weighted average 10.92
 Formula 34,301 head 12.76-50.10, weighted average 30.50
 Feeder pigs 40 pounds basis: Cash 18,576 head 28.00-44.00, weighted average 37.14

NATIONAL DAILY DIRECT PRIOR DAY HOG REPORTS FOR 06/23/23

BARROWS AND GILTS (Carcass Basis): 2,309 head
 Base Carcass Price 75.00-96.00, weighted average 92.19

SOWS (Live Basis): 6,801 head
 300-500 lbs. 13.00-51.00
 Over 500 lbs. 25.77-55.00

MISSOURI WEEKLY DIRECT SLAUGHTER CATTLE REPORT 06/23/23

Weekly Receipts: 320 Week ago: 120 Year ago: 360
 Trade as of Friday morning: trade was light with lower bids.

LIVE STEERS & HEIFERS: No sales reported
DRESSED STEERS & HEIFERS: 3 loads Thur 289.00 flat

GRADE AND WEIGHT (Grid): 5 loads Thur 298.00

Click here for the current [National Crop Progress](#)
 Click here for the current [Missouri Crop Progress](#)