

Weekly Market Summary

Published by:
Missouri Department of Agriculture
Ag Business Development Division
Market News Program



Chris Chinn, Director
 Jill Wood, Division Director
 Tony Hancock, Editor
<http://www.ams.usda.gov/marketnews.htm>
<http://www.ams.usda.gov/marketnews.htm>

Michael L. Parson, Governor

Volume XLIII, Number 36 ♦ P.O. Box 630, Jefferson City, MO 65102 ♦ (573) 751-4211 ♦ Mon, Sep 18, 2023

MISSOURI WEEKLY FEEDER CATTLE WEIGHTED AVERAGE REPORT

Receipts: 27,190 Week ago: 11,329 Year ago: 27,729
 Steers and Heifers Medium and Large 1—Weighted average weights and prices

STEERS: Medium and Large 1

332 lbs. 337.90	527 lbs. 303.35	717 lbs. 267.07	919 lbs. 237.95
377 lbs. 332.28	576 lbs. 297.25	763 lbs. 258.33	954 lbs. 235.23
426 lbs. 321.19	627 lbs. 282.03	818 lbs. 248.19	1039 lbs. 213.00
472 lbs. 309.81	669 lbs. 274.85	879 lbs. 245.10	

HEIFERS: Medium and Large 1

325 lbs. 289.54	521 lbs. 263.95	722 lbs. 244.80	908 lbs. 206.78
376 lbs. 283.87	576 lbs. 263.61	771 lbs. 236.12	965 lbs. 195.67
431 lbs. 272.04	625 lbs. 258.29	838 lbs. 222.25	1018 lbs. 205.45
478 lbs. 272.26	676 lbs. 254.34	878 lbs. 219.89	

MISSOURI STEER (HEIFER) STOCKER FORMULA 09/18/2023

Monday's Missouri Stocker formula consists of **5203 (5362)** head with a weighted average weight of **546.93 (532.98)** lbs. and a price value of **286.96 (257.09)**, 1.55 lower (6.32 lower) than last week.

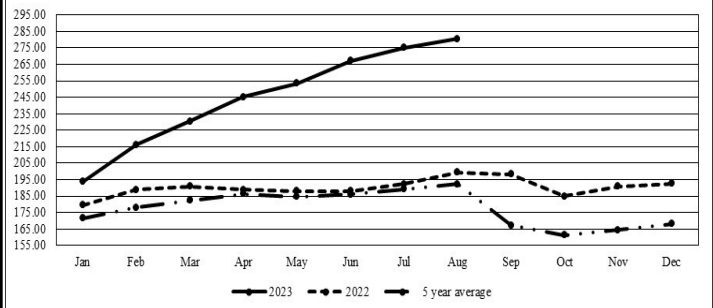
This a rolling seven day calculated weighted value which combines all Feeder Steers reported by MDA/USDA Market News Service weighing from 400-649 lbs. in the Medium and Large 1 and Medium and Large 1-2 frame and muscle classifications, including all comment cattle except Brahman X. Heifer values are in parentheses.

MISSOURI WEEKLY CATTLE AUCTION SUMMARY

Compared to the lighter holiday week offering last week, feeders sold most steady with spots of 5.00 higher. The feeder supply was moderate with several reporters noting an increase in calves and what looked like an early start to the fall run. Demand was moderate. Temperatures have begun to make pretty big swings between nights and days and that makes it hard to keep calves healthy. Those coming to auction without legitimate health and weaning programs seeing pretty severe discounts. Many farmers are right in the heart of fall calving season and a fair number of combines are shelling corn now. Typically September is one of if not the lightest month for total sales volume in the state due to it being such a busy time around the farms. A few stick out sales this week included a part load of 480 lb. steers at F & T Livestock Market which sold for 332.50. Another part load of 581 lb. steers at Kingsville Livestock Market sold for 315.00. Callaway Livestock Center had a load of 728 lb. steers bring 280.50. Tina Livestock Market sold 39 head of 897 lb. steers at 249.75. Boxed beef cutouts closed lower this week. Choice closed at 305.71, down 7.19 and select closed at 283.12, down 2.93 compared to last Friday. Negotiated feedlot sales as of the Friday afternoon was near 47K head reported. Live sales were reported from 182.00-186.50 and dressed sales were reported at 292.00. Missouri Stocker formula consists of 5203 head with a weighted average weight of 546.93 lbs. and a price value of 286.96, 1.55 lower than a week ago. The steer/heifer spread is 29.87.

The Weekly Market Summary, as well as historical summaries, are available on our website <https://agmarketnews.mo.gov/summaries>
 Market News Hotline: 1-573-522-9244

Missouri Stocker Formula - Steers

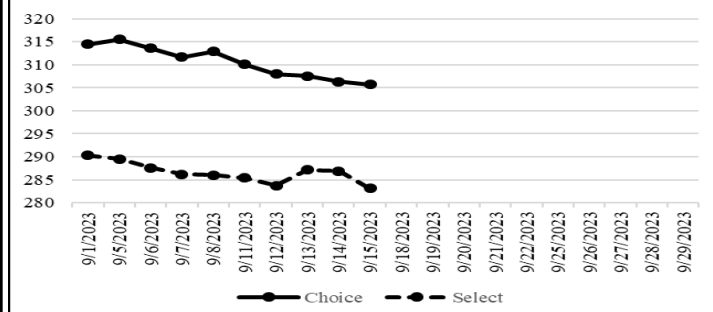


*Graph is updated the first Monday of each month. Axis value ranges may be updated to reflect data points.

NATIONAL BOXED BEEF CUTOUT/BOXED BEEF CUTS

<u>DATE</u>	<u>CHOICE</u>	<u>SELECT</u>	<u>TOTAL LOADS</u>
09/11	310.11	285.44	126
09/12	308.03	283.78	130
09/13	307.55	287.19	142
09/14	306.37	286.86	131
09/15	305.71	283.12	156
5 Day Simple Average	307.55	285.28	

Boxed Beef Cuts September 2023



*Axis value ranges may be updated to reflect data points.

WEEKLY LIVESTOCK SLAUGHTER 09/16/23

	<u>CATTLE</u>	<u>HOGS</u>	<u>SHEEP</u>
Week to Date:	632,000	2,531,000	35,000
Last Week:	559,000	2,234,000	28,000
Last Year:	673,000	2,486,000	35,000

SOUTHWEST MISSOURI WEEKLY SUMMARY

(Joplin and Springfield)

Receipts: 13,609 Week ago: 1,241 Year ago: 11,725

Compared to two weeks ago, steers and heifers steady to 3.00 higher. Compared to last week, slaughter cows 3.00 to 6.00 lower. Slaughter bulls 2.00 to 4.00 higher.

FEEDER STEERS:
Medium and Large 1

350-400 lbs.	320.00-342.00
400-500 lbs.	288.00-335.00
500-600 lbs.	278.00-310.00
600-700 lbs.	265.00-288.00
700-800 lbs.	250.00-272.00
800-900 lbs.	239.50-251.00
900-1000 lbs.	228.00-239.50
38 hd 1039 lbs.	213.00

FEEDER HEIFERS:
Medium and Large 1

300-400 lbs.	271.00-300.00
400-500 lbs.	255.00-285.00
500-600 lbs.	248.00-276.00
600-700 lbs.	239.50-258.00
700-800 lbs.	230.00-246.50
800-900 lbs.	217.00-255.50
900-950 lbs.	202.00-217.00
1000-1050 lbs.	202.00-206.00

FEEDER HOLSTEIN STEERS
Large 3

300-400 lbs.	140.00-180.00
400-500 lbs.	150.00-173.00
500-600 lbs.	150.00-188.00
600-700 lbs.	160.00-185.00
700-800 lbs.	160.00-170.00
800-900 lbs.	150.00-171.00

SLAUGHTER COWS: Breaking and Boning (70-85% lean) 100.50-119.50, high dressing 111.00-125.50; low dressing 94.00-107.50. Lean (85-90%) 91.00-106.50

SLAUGHTER BULLS: Yield Grade 1-2 1005-2295 lbs. 116.00-128.50; high dressing 127.00-145.00; low dressing 102.00-116.50

BRED COWS: Medium and Large 1 2-8 yrs 1080-15900 lbs 2nd and 3rd stage 1635.00-2550.00, 1st stage 1550.00-1875.00; some over 8 yrs 2nd and 3rd stage 1600.00-1900.00 per head.
BRED HEIFERS: Medium and Large 1 less than 2 yrs 1020-1160 lbs 2nd and 3rd stage 1850.00-3100.00 per head.

COW & CALF PAIRS: Medium and Large 1 2-8 yrs 1085-1610 lbs baby to 300 lb calves few rebred 2050.00-2850.00 per pair. Medium and Large 1-2 2-8 yrs 950-1310 baby to 300 lb calves few rebred 1575.00-2250.00 per pair.

SOUTH CENTRAL MISSOURI WEEKLY SUMMARY

(West Plains, Phillipsburg)

Receipts: 5,166 Week ago: 4,078 Year Ago: 3,747

Compared to last week, steers sold steady to 6.00 higher, heifers sold from 4.00 lower to 5.00 higher. Slaughter cows and bulls sold steady to 2.00 lower.

FEEDER STEERS:
Medium and Large 1

300-400 lbs.	320.00-339.00
400-500 lbs.	285.00-320.00
500-600 lbs.	284.00-312.50
600-700 lbs.	263.00-300.00
700-800 lbs.	251.50-267.00
Pkg 881 lbs.	240.75

FEEDER HEIFERS:
Medium and Large 1

300-400 lbs.	259.00-282.00
400-500 lbs.	252.50-278.00
500-600 lbs.	243.00-274.50
600-700 lbs.	240.00-268.50
700-800 lbs.	222.00-236.50

FEEDER HOLSTEIN STEERS
Large 3

Scarce Scarce

SLAUGHTER COWS: Breaking and Boning (70-85% lean) 100.00-115.00, high dressing 110.50-122.00; low dressing 82.50-104.00. Lean (85-90%) 89.00-104.00

SLAUGHTER BULLS: Yield Grade 1-2 1215-2150 lbs. 110.00-132.00; high dressing 122.50-147.00; low dressing 93.00-118.00

BRED COWS: Medium and Large 1 2-8 yrs 1167-1365 lbs 2nd and 3rd stage 1625.00-195.00. Medium and Large 1-2 2-8 yrs 1045-1335 lbs 1st to 3rd stage 1225.00-1750.00 per head.

COW & CALF PAIRS: Medium and Large 1-2 2-8 yrs 850-1263 lbs baby to 300 lb calves 1700.00-1900.00 per pair.

BRED HEIFERS: Scarce

WEST CENTRAL MISSOURI WEEKLY SUMMARY

(Kingsville, Windsor, Butler)

Receipts: 5,080 Week ago: 2,410 Year ago: 5,227

Compared to last week, feeders sold steady to 5.00 higher with some mid-weights 10.00 higher. Slaughter cows sold steady to 10.00 lower.

FEEDER STEERS:
Medium and Large 1

300-400 lbs.	300.00-358.00
400-500 lbs.	303.00-347.50
500-600 lbs.	274.00-329.00
600-700 lbs.	260.00-297.00
700-800 lbs.	230.00-278.00
Load 809 lbs.	252.50

FEEDER HEIFERS:
Medium and Large 1

300-400 lbs.	292.50-303.00
400-500 lbs.	260.00-317.50
500-600 lbs.	258.00-284.00
600-700 lbs.	241.00-280.00
700-800 lbs.	232.00-254.00
800-900 lbs.	209.50-233.00

SLAUGHTER BULLS: Yield Grade 1-2 1280-2295 lbs 124.00-138.00; high dressing 137.00-143.50; low dressing 108.00-116.00

SLAUGHTER COWS: Breaking and Boning (70-85% lean) 94.00-124.00, high dressing 103.50-134.00 low dressing 87.00-103.00 Lean (85-90%) 86.00-105.00

BRED COWS: Medium and Large 1-2 2-8 yrs 1150-1490 lbs 2nd and 3rd stage 1200.00-1800.00 per head.

COW & CALF PAIRS: Medium and Large 1-2 5-8 yrs 985-1225 lbs 150-300 lb calves 1635.00-1650.00 per pair.

NORTHEAST MISSOURI WEEKLY SUMMARY

(Bowling Green, Kingdom City, Palmyra)

Receipts: 4,276 Week ago: 3,038 Year ago: 5,070

Compared to last week, steer calves under 600 lbs sold firm to 5.00 higher, with over 600 lbs selling with a firm to higher undertone. Feeder heifers sold steady to firm. Slaughter cows sold steady to 4.00 lower.

FEEDER STEERS:
Medium and Large 1

400-500 lbs.	309.00-359.00
500-600 lbs.	298.50-327.00
600-700 lbs.	276.25-394.00
700-800 lbs.	270.25-282.25
800-900 lbs.	243.00-248.75
Pkg. 938 lbs.	236.00

FEEDER HEIFERS:
Medium and Large 1

400-500 lbs.	280.00-310.00
500-600 lbs.	265.50-289.00
600-700 lbs.	260.75-273.50
700-800 lbs.	260.75-261.50
800-900 lbs.	
900-950 lbs.	

SLAUGHTER BULLS: Yield Grade 1-2 1325-2250 lbs 124.00-147.50; high dressing 137.00-160.00

SLAUGHTER COWS: Breaking and Boning, (70-85% lean) 105.00-124.50; high dressing 114.00-134.00; low dressing 95.00-109.50. Lean (85-90%) 92.50-107.50

SLAUGHTER STEERS: Choice 2 -3 181.50-185.50. Select and Choice 2-3 174.00-180.00

SLAUGHTER HEIFERS: Choice 2-3 181.25-184.50 Select and Choice 2-3 169.50-176.00

BRED COWS: Scarce

COW/CALF PAIRS: Scarce

NORTH CENTRAL MISSOURI WEEKLY SUMMARY

(Macon, Unionville, Green City, New Cambria)

Receipts: 920 Week ago: 4,628 Year ago: 5,890

Too few feeders for a price comparison, but undertone lower. Slaughter cows steady to 3.00 lower.

*Some sale barns on a bi-weekly schedule and may not have a sale each week.

FEEDER STEERS:
Medium and Large 1

Pkg 488 lbs.	286.00
600-650 lbs.	280.00-280.25

FEEDER HEIFERS:
Medium and Large 1

73 hd 730 lbs.	243.00
----------------	--------

SLAUGHTER BULLS: Yield Grade 1-2 few 1350-1630 lbs 113.00-120.00.

SLAUGHTER COWS: Breaking and Boning, (70-85% lean) 94.00-113.00. Lean (85-90%) 86.00-104.00

BRED COWS: Medium and Large 1-2 2-4 yrs 1125-1325 lbs. 3rd stage 1900.00-2575.00; Bred Heifers: Medium and Large 1-2 less than 2 yrs 1035-1200 lb 2nd and 3rd stage 2250.00-2800.00 per head.

COW & CALF PAIRS: Medium and Large 1-2 2-8 yrs 1050-1440 lbs baby to 300 lb calves few rebred 2000.00-2675.00 per pair.

SOUTHEAST MISSOURI WEEKLY SUMMARY

(Jackson and Farmington)

Receipts: 1,899 Two Weeks ago: 1,123 Year ago: 2,187
 Compared to last week, steers and heifers 300-400 lbs. sold uneven from 4.00 lower to 8.00 higher, the rest of the offering sold steady to 8.00 higher. Slaughter cows and bulls sold 2.00 higher.

FEEDER STEERS:
 Medium and Large 1

FEEDER HEIFERS:
 Medium and Large 1

300-400 lbs.	280.00-327.00	300-400 lbs.	235.00-300.00
400-500 lbs.	279.00-327.50	400-500 lbs.	230.00-285.00
500-600 lbs.	268.00-297.00	500-600 lbs.	221.00-265.00
600-700 lbs.	248.00-279.00	600-700 lbs.	232.00-257.00
700-800 lbs.	219.00-239.00	700-800 lbs.	230.00-249.00

SLAUGHTER BULLS: Yield
 Grade 1-2 1470-2265 lbs. 100.00-116.00; high dressing 115.00-133.00.

SLAUGHTER COWS: Breaking and Boning (75-85% lean) 90.00-106.00; high dressing 102.50-116.00. Lean (85-90% lean) 70.00-90.00

BRED COWS: Medium and Large 2 2-8 yrs 1000-1560 lbs 1st stage 1500.00-1575.00, 2nd stage 925.00-1725.00, 3rd stage 1675.00-1950.00 per head

COW & CALF PAIRS: Scarce

EAST CENTRAL MISSOURI WEEKLY SUMMARY

(Cuba, Vienna)

Receipts: 2,779 Two Weeks ago: 1,805 Year ago: 4,284
 Compared to two weeks ago, steers and heifers steady to 5.00 higher. Slaughter cows steady to 5.00 lower.

FEEDER STEERS:
 Medium and Large 1

FEEDER HEIFERS:
 Medium and Large 1

400-500 lbs.	287.50-330.00	400-500 lbs.	267.00-295.00
500-600 lbs.	276.00-315.00	500-600 lbs.	260.00-289.00
600-700 lbs.	269.75-293.25	600-700 lbs.	255.00-268.50
700-800 lbs.	249.00-268.00	700-750 lbs.	232.00-240.00
800-900 lbs.	238.25-252.50	800-900 lbs.	210.00-222.00

SLAUGHTER BULLS: Yield
 Grade 1-2 1360-2285 lbs 114.00-130.00; high dressing 120.00-135.00; low dressing 105.00-117.00.

SLAUGHTER COWS: Breaking and Boning, (70-85% lean) 101.00-115.00; high dressing 108.50-120.50. Lean (85-90%) 92.00-103.00

BRED HEIFERS: Medium and Large 1-2 2-8 yrs 800-1340 lbs 1st to 2nd stage 1085.00-1625.00 per head

COW & CALF PAIRS: Medium and Large 1-2 2-8 yrs 1010-1075 lbs with <150 lb calves 1700.00-1800.00 per pair

NORTHWEST MISSOURI WEEKLY SUMMARY

(Tina)

Receipts: 1,350 Two Weeks Ago: 951 Year Ago: 1,660
 Compared to two weeks ago, steers and heifers 300-600 lbs firm to 10.00 higher and 600-800 lbs steady to firm. Slaughter cows steady to 2.00 lower.

FEEDER STEERS:
 Medium and Large 1

FEEDER HEIFERS:
 Medium and Large 1

13 hd 385 lbs.	346.00	350-400 lbs.	282.00-295.00
400-500 lbs.	312.50-327.50	400-450 lbs.	277.50-285.00
500-600 lbs.	298.00-309.00	500-600 lbs.	270.00-274.00
600-650 lbs.	280.00-285.00	600-700 lbs.	254.00-270.00
700-800 lbs.	257.50-270.00		
800-900 lbs.	249.75-258.50		
Pkg 955 lbs.	246.25		

SLAUGHTER BULLS: Yield
 Grade 1-2 1395-2055 lbs 122.00-136.50

SLAUGHTER COWS: Breaking and Boning, (70-85% lean) 98.00-119.50; high dressing 117.50-129.00. Lean (85-90%) 95.00-112.00

BRED COWS: Scarce

COW & CALF PAIRS: Scarce

AFTERNOON NATIONAL SLAUGHTER CATTLE REVIEW

Thus far for Friday in the Texas Panhandle negotiated cash trade has been slow on light demand. Compared to last week live FOB purchases traded 2.00-3.00 higher from 182.00-183.00 on a light test. In Kansas negotiated cash trade has been slow on light to moderate demand. Compared to last week live FOB purchases traded 2.00-3.00 higher from 182.00-183.00. In Nebraska negotiated cash trade has been slow on light demand. Compared to last week live FOB purchases traded steady to 1.00 higher from 184.00-185.00. With a few dressed delivered purchases at 292.00 last week dressed delivered purchases traded at 290.00. In the Western Cornbelt negotiated cash trade was slow on light to moderate demand. Compared to Thursday live FOB purchases traded steady at 185.00. With a few dressed delivered purchases at 292.00 last week dressed delivered purchases traded from 288.00-290.00.

Negotiated Cash Sales:				
Confirmed:	25,150	Week Ago:	14,960	Year Ago: 12,305
Week to date:	46,818	Week Ago:	43,359	Year Ago: 71,054

Live Basis	Steers	Heifers
Over 80% Choice	182.00-186.00 avg 184.58	182.00-185.00 avg 184.33
65-80% Choice	182.00-185.00 avg 182.65	182.00-185.00 avg 182.71
35-65% Choice	182.00-183.00 avg 182.71	182.00-183.00 avg 182.48
0-35% Choice	-	-
Total All Grades	182.00-186.00 avg 183.62	182.00-185.00 avg 183.67
Dressed Basis		
Over 80% Choice	292.00-292.00 avg 292.00	292.00-292.00 avg 292.00
65-80% Choice	292.00-292.00 avg 292.00	292.00-292.00 avg 292.00
35-65% Choice	-	-
0-35% Choice	-	-
Total All Grades	292.00-292.00 avg 292.00	292.00-292.00 avg 292.00

All Beef Type Steers/Heifers	Head	Avg Wt	Price Range	Wtd Avg
Live FOB	18,258	1375.70	182.00-187.50	183.65
Live Del	584	1514.10	185.50-190.00	187.06
Dressed Del	5,452	916.6	288.00-297.00	292.00
Dressed FOB	171	945.0	292.00-292.00	292.00

WEEKLY COMMODITY FUTURES TRENDS

Compared to last week, Live Cattle 3.70 to 4.62 higher, Lean Hogs 0.15 to 1.60 higher, Feeder Cattle 0.02 to 9.20 higher.

Daily Futures Closes

	Mon.	Tues.	Wed.	Thu.	Fri.
Cattle					
Oct	184.25	184.15	183.15	185.47	186.92
Dec	188.27	188.45	187.85	190.35	191.82
Feb	192.72	192.62	192.37	194.97	196.32
Apr	196.42	196.60	196.15	198.75	199.75
Jun	190.20	190.30	189.95	192.52	193.82
Lean Hogs					
Oct	82.55	85.27	83.97	83.35	83.12
Dec	74.65	76.90	76.35	75.10	75.10
Feb	78.85	80.25	80.17	79.02	78.77
Apr	84.45	85.22	85.17	84.47	84.22
May	89.10	89.47	89.57	88.95	88.85
Fdr Cat					
Sep	256.22	255.32	253.50	255.17	255.37
Oct	261.45	261.25	259.05	261.87	264.47
Nov	262.75	262.90	261.57	264.85	268.12
Jan	262.02	262.37	261.20	264.97	268.32
Mar	263.12	263.72	262.92	266.90	269.87
Milk					
Sep	18.39	18.29	18.35	18.40	18.40
Oct	18.50	18.04	18.21	18.25	18.13
Nov	18.50	18.24	18.35	18.33	18.32

WEEKLY COMMODITY GRAIN FUTURES TRENDS

Compared to last week, Soybeans 0.14 to 0.23 lower, Wheat 0.04 to 0.09 higher, Corn 0.02 to 0.07 lower, KC Wheat 0.13 to 0.17 higher, Soybean Meal 9.10 to 11.40 lower.

Daily Grain Futures Closes

	Mon.	Tues.	Wed.	Thu.	Fri.
Soybeans					
Sep	1352 1/2	1331 3/4	1336	1343 3/4	—
Nov	1269	1346 1/2	1349 3/4	1360 1/2	1340 1/4
Jan	1284	1362 1/4	1366 1/4	1375 3/4	1355 3/4
Mar	1391 1/4	1370 3/4	1375 3/4	1385	1365 1/2
May	1395 1/4	1376 3/4	1381 3/4	1390 3/4	1371
Wheat					
Sep	556	560 1/4	569	567 1/2	—
Dec	584 1/2	587 1/2	597 1/4	593 3/4	604 1/4
Mar	610 3/4	614	623 1/2	620 1/4	629 1/2
May	627 1/2	630 1/2	640	636 3/4	645 1/4
Jul	637 1/2	640	647 1/2	644 1/4	652
Corn					
Sep	471 1/4	463 1/4	464	462 1/2	—
Dec	485 3/4	476 1/2	482 1/4	480 1/2	476 1/4
Mar	500 1/4	491	496 1/4	494 1/2	490 1/2
May	508 3/4	499 1/4	504 1/2	502 3/4	499
Jul	512 3/4	503 1/2	508 1/2	507 1/2	503 3/4
KC Wheat					
Sep	718	723 1/4	737 1/4	711	—
Dec	723 3/4	730 3/4	744 3/4	736 1/2	763 1/2
Mar	726 3/4	734 1/2	748	741 1/4	751 1/2
May	728 1/4	435	749 1/2	743	753 1/4
Jul	713 3/4	720 3/4	733 3/4	728 1/4	736 1/4
SB Meal					
Sep	412.00	405.20	401.90	401.90	—
Oct	406.00	398.40	395.90	400.40	393.60
Dec	404.90	398.10	394.80	399.40	392.10
Jan	402.60	396.30	392.20	396.30	389.10
Mar	397.20	391.40	387.00	390.30	383.60

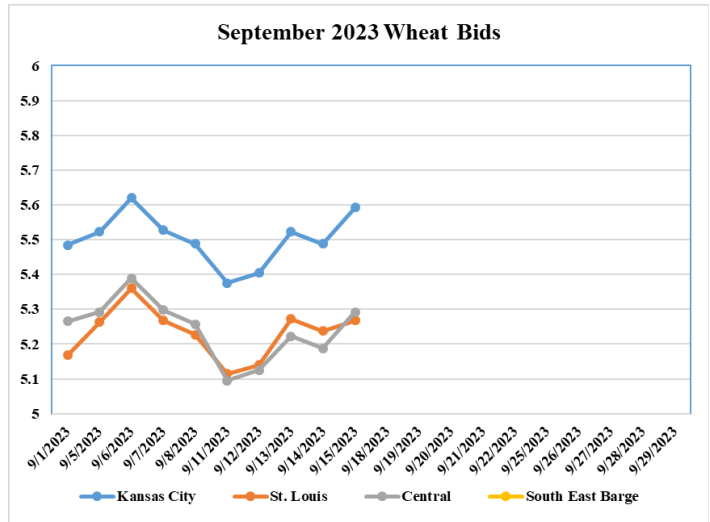
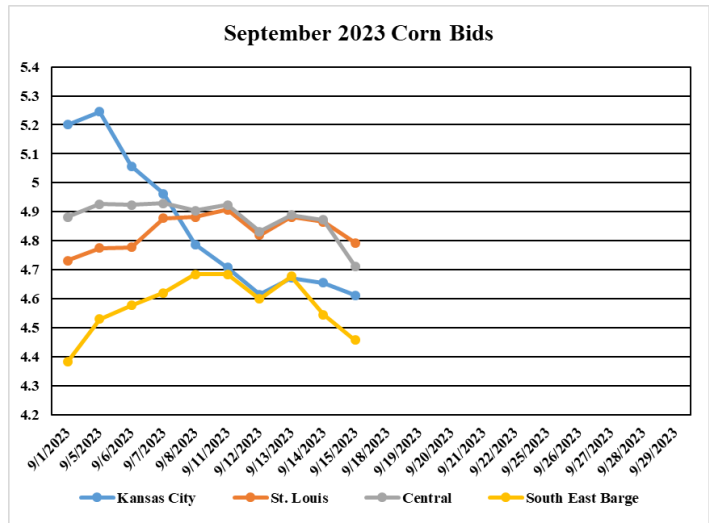
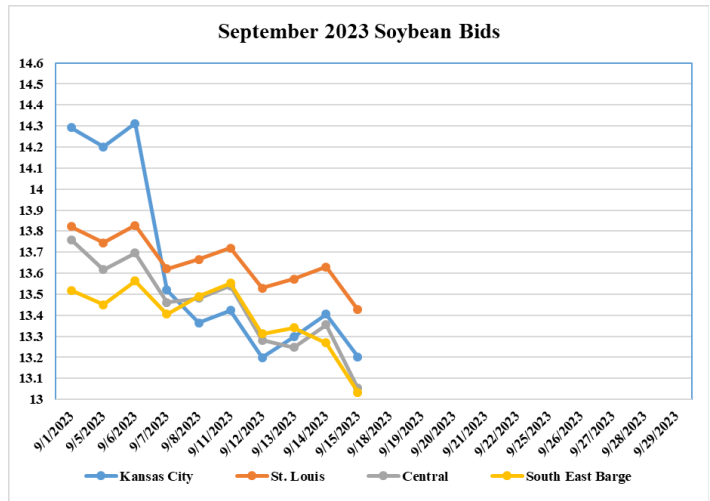
MISSOURI GRAIN WEEKLY TRENDS

Compared to last week, Soybeans 0.08 to 0.25 lower, Wheat 0.04 to 0.11 higher, Corn 0.06 to 0.27 lower, Sorghum 0.07 lower.

Area	#1 Soybeans	#2 Soft Wheat	#2 Corn	#2 Grain Sorghum
Kansas City				
Friday**	12.98-14.08	5.49	4.54-5.04	5.09
Monday	13.04-14.14	5.37	4.55-4.85	5.10
Tuesday	12.82-13.92	5.41	4.47-4.77	5.02
Wednesday	12.85-14.10	5.52	4.52-4.82	5.07
Thursday	12.96-14.21	5.49	4.51-4.81	5.06
Friday	12.75-14.00	5.59	4.46-4.76	5.01
St. Louis				
Friday**	13.65-13.68	5.21-5.24	4.88-4.89	—
Monday	13.73-13.74	5.09-5.12	4.90	—
Tuesday	13.48-13.59	5.13-5.16	4.82-4.83	—
Wednesday	13.53-13.62	5.22-5.32	4.88	—
Thursday	13.63-13.64	5.19-5.29	4.87	—
Friday	13.42-13.43	5.24-5.29	4.76-4.82	—
Central				
Friday**	13.38-13.53	5.26	4.84-4.94	—
Monday	13.44-13.59	4.99-5.14	4.85-4.95	—
Tuesday	13.22-13.37	5.03-5.18	4.77-4.87	—
Wednesday	13.15-13.30	5.12-5.27	4.82-4.92	—
Thursday	13.26-13.41	5.09-5.24	4.81-4.91	—
Friday	12.95-13.10	5.19-5.34	4.66-4.71	—
S.E. MO				
Friday**	13.31-13.63	—	4.58-4.84	—
Monday	13.38-13.69	—	4.58-4.85	—
Tuesday	13.16-13.47	—	4.49-4.72	—
Wednesday	13.18-13.50	—	4.54-4.77	—
Thursday	13.05-13.46	—	4.36-4.66	—
Friday	12.84-13.15	—	4.30-4.51	—

(PRICES PER BUSHEL) *NEW CROP **PREVIOUS WEEK'S PRICES
*Bids calculated using Kansas City, St. Louis, and St. Joseph bids

MONTHLY GRAIN CROP



*Axis value ranges may be updated to reflect data points.

**WHOLESALE FEEDSTUFFS PRICES
(DOLLARS PER TON-BULK BASIS)**

Area	Soybean Hulls Pellets	Soybean Meal 46.5-48%	Corn Gluten Pellets 21%	Wheat Middlings
Kansas City	295.00	399.60	316.00	272.50
St. Louis	n/a	n/a	223.00	252.50

CROP PRODUCTION

Corn production for grain is forecast at 15.1 billion bushels, up less than 1 percent from the previous forecast and up 10 percent from 2022. Based on conditions as of September 1, yields are expected to average 173.8 bushels per harvested acre, down 1.3 bushels from the previous forecast but up 0.5 bushel from last year. Acreage updates were made in several States based on a thorough review of all available data. Total planted area, at 94.9 million acres, is up 1 percent from the previous estimate and up 7 percent from the previous year. Area harvested for grain is forecast at 87.1 million acres, up 1 percent from the previous forecast and up 10 percent from the previous year.

Soybean production for beans is forecast at 4.15 billion bushels, down 1 percent from the previous forecast and down 3 percent from 2022. Based on conditions as of September 1, yields are expected to average 50.1 bushels per acre, down 0.8 bushel from the previous forecast but up 0.6 bushel from 2022. Total planted area, at 83.6 million acres, is up less than 1 percent from the previous estimate but down 4 percent from the previous year. Area harvested for beans in the United States is forecast at 82.8 million acres, up less than 1 percent from the previous forecast but down 4 percent from 2022. Acreage updates were made in several States based on a thorough review of all available data.

All cotton production is forecast at 13.1 million 480-pound bales, down 6 percent from the previous forecast and down 9 percent from 2022. Based on conditions as of September 1, yields are expected to average 786 pounds per harvested acre, up 7 pounds from the previous forecast but down 164 pounds from 2022. Upland cotton production is forecast at 12.8 million 480-pound bales, down 7 percent from the previous forecast and down 9 percent from 2022. Pima cotton production is forecast at 356,000 bales, up 33 percent from the previous forecast but down 24 percent from 2022. All cotton planted area totaled 10.2 million acres, down 8 percent from the previous forecast and down 26 percent from 2022. All cotton area harvested is forecast at 8.02 million acres, down 7 percent from the previous forecast but up 10 percent from 2022.

MISSOURI WEEKLY SHEEP/GOAT AUCTION SUMMARY

Receipts: 730 Week Ago: 3044 Last Year: 1806

SHEEP: Feeder Lambs: hair Small and Medium 2 45 lbs 175.00. Small and Medium 2-3 38 lbs 175.00; 29-50 lbs thin 120.00-152.50. Slaughter Lambs: hair Choice and Prime 1-3 40-70 lbs 182.50-205.00, high dressing 225.00; 70-135 lbs 165.00-190.00' high dressing 192.50-210.00. Choice 1-2 65-90 lbs 150.00-177.50. Ewes Utility and Good 1-2 107-150 lbs 71.00-80.00; 150-160 lbs 69.00-77.00. Utility 1-2 108-150 lbs 55.00-60.00. Replacement Ewes: Medium 1-2 2-4 yrs 80-126 lbs Exp 160.00-200.00.

GOATS: Feeder Kids: Selection 2-3 39-43 lbs 155.00-175.00. Selection 3 38-52 lbs 125.00-135.00. Selection 3 38-52 lbs. 125.00-135.00. Slaughter Kids: Selection 1 pkg 86 lbs 240.00. Selection 2 50-65 lbs 185.00-205.00.

Explanatory Notes: Stage - Represents estimated lambing/kidding period (Open, Exp=exposed, Bred, Fall = Sep-Nov, Win = Dec-Feb, Spr = Mar-May, Sum=Jun-Aug; w/s = woolled and shorn; /hd= per head; /fam=per family All price CWT unless otherwise noted.

MISSOURI CROP PROGRESS AND CONDITION

	Week Ending			2018-2022 Average
	09/10/23	09/03/23	09/10/22	
Corn dented	94	87	91	89
Corn mature	51	32	42	42
Corn harvested	9	2	4	6
Soybeans setting pods	97	94	90	92
Soybeans dropping leaves	17	8	9	7
Rice headed	97	94	99	98
Rice harvested	14	5	2	7
Winter wheat planted	1	-	-	-

MISSOURI DROUGHT MONITOR

Date	None	D0	D1	D2	D3	D4
09/12/23	21.39	24.61	26.89	16.40	10.71	0
09/05/23	28.19	18.94	34.97	12.77	5.13	0
09/13/22	48.17	39.65	6.79	4.49	0.90	0

Reflects percentage of Missouri impacted by drought. D0 Abnormally Dry; D1 Moderate Drought; D2 Severe Drought; D3 Extreme Drought; D4 Exceptional Drought

NATIONAL DIRECT DELIVERED FEEDER PIG REPORT

09/15/23 Receipts: 108,260 Week ago: 128,299 Year Ago: 71,001 Early weaned pigs steady to 2.00 higher and feeder pigs steady to 3.00 higher. Early weaned pigs 10-12 lbs. basis: Cash 84,100 head 6.00-26.00, weighted average 16.38. Formula 5,000 head 30.50 weighted average 30.50 Feeder pigs 40 pounds basis: Cash 19,160 head 29.00-47.00, weighted average 37.76

NATIONAL DAILY DIRECT PRIOR DAY HOG REPORTS FOR 09/15/23

BARROWS AND GILTS (Carcass Basis): 3,213 head Base Carcass Price 74.00-80.00, weighted average 78.25

SOWS (Live Basis): 7,134 head 300-500 lbs. 20.00-60.50 Over 500 lbs. 36.0-61.50

MISSOURI WEEKLY DIRECT SLAUGHTER CATTLE REPORT 09/15/23

Weekly Receipts: 200 Week ago: 240 Year ago: 280 As of Friday morning trade is light to inactive, Flat dressed sales are 2.00 higher than last week.

LIVE STEERS & HEIFERS: No Sales Reported **DRESSED STEERS & HEIFERS:** 5 loads Fri 292.00 flat

GRADE AND WEIGHT (Grid): No Sales Reported

MISSOURI WEEKLY HAY SUMMARY 09/14/23

Cool mornings had several jackets pulled out from behind the seats this week. It is getting to be quite busy on farms across the state. Grain harvest is underway now with 10 percent of the corn crop shelled already. Many cattle producers are in the process of fall calving and still a few out baling some hay. No wide spread moisture this week but isolated areas here and there got a couple of tenths and heavy morning dews are keeping conditions mostly unchanged as reflected by the latest drought monitor. Hay prices are steady. The overall supply of hay is light to moderate and demand is moderate. The Missouri Department of Agriculture has a hay directory visit <http://mda.mo.gov/abd/haydirectory/> for listings of hay <http://agebb.missouri.edu/haylst/>

- Alfalfa - Supreme 250.00-300.00, small square 10.00-15.00 per bale
- Alfalfa - Premium 200.00-250.00
- Alfalfa - Good 150.00-200.00, small square 5.00-10.00 per bale
- Alfalfa - Fair 125.00-150.00
- Alfalfa/grass mix - Good/Premium small square 5.00-10.00 per bale
- Mixed grass - Good/Premium 150.00-225.00
- Mixed grass - Fair/Good 100.00-175.00, small square 5.00-8.00 per bale
- Mixed grass - Fair 50.00-100.00 per large round bale
- Wheat straw - 4.00-7.00 per small square bale

Please Note: The above volumes (tonnage, acres, and bales) listed are for confirmed trades only, it does not include estimated volume (tonnage) for bids or offers to the trade. List your hay for sale at: [Hay Listing Online Form](#). Explanation of Hay Quality Guidelines: [Hay Quality Designation Guidelines](#). Glossary of Terms: [Livestock, Poultry, & Grain Hay Terms](#)

Click here for the current [National Crop Progress](#)
Click here for the current [Missouri Crop Progress](#)
The current hay directory can be found at: [Hay Directory](#).