

# Weekly Market Summary

Published by:  
**Missouri Department of Agriculture**  
**Ag Business Development Division**  
**Market News Program**



Chris Chinn, Director  
 Jill Wood, Division Director  
 Tony Hancock, Editor  
<http://www.ams.usda.gov/marketnews.htm>  
<http://www.ams.usda.gov/marketnews.htm>

Michael L. Parson, Governor

Volume XLIII, Number 41 ♦ P.O. Box 630, Jefferson City, MO 65102 ♦ (573) 751-4211 ♦ Mon, Oct 16, 2023

## MISSOURI WEEKLY FEEDER CATTLE WEIGHTED AVERAGE REPORT

Receipts: 16,962 Week ago: 19,529 Year ago: 21,479  
 Steers and Heifers Medium and Large 1—Weighted average weights and prices

### STEERS: Medium and Large 1

334 lbs. 323.31	526 lbs. 292.02	726 lbs. 256.13	924 lbs. 236.04
371 lbs. 312.28	575 lbs. 284.78	772 lbs. 258.19	966 lbs. 219.53
426 lbs. 310.19	627 lbs. 269.95	812 lbs. 244.95	
471 lbs. 308.02	673 lbs. 270.88	883 lbs. 242.72	

### HEIFERS: Medium and Large 1

291 lbs. 276.80	479 lbs. 263.51	668 lbs. 245.11	862 lbs. 222.25
331 lbs. 272.17	526 lbs. 249.82	731 lbs. 242.51	902 lbs. 207.17
381 lbs. 271.80	574 lbs. 245.91	772 lbs. 242.08	
428 lbs. 266.01	620 lbs. 241.21	829 lbs. 219.75	

## MISSOURI STEER (HEIFER) STOCKER FORMULA 10/16/2023

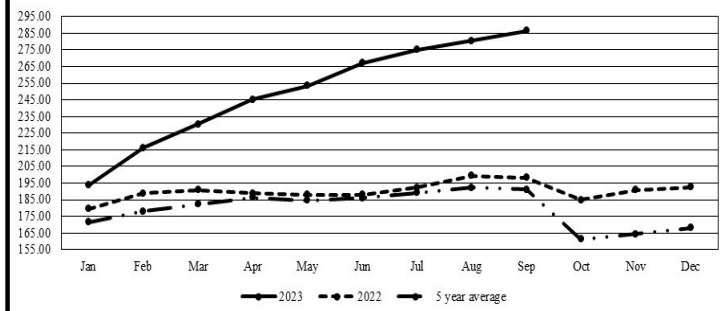
Monday's Missouri Stocker formula consists of **3318 (3012)** head with a weighted average weight of **536.01 (526.45)** lbs. and a price value of **277.76 (243.25)**, 0.52 higher (7.20 lower) than last week.

This a rolling seven day calculated weighted value which combines all Feeder Steers reported by MDA/USDA Market News Service weighing from 400-649 lbs. in the Medium and Large 1 and Medium and Large 1-2 frame and muscle classifications, including all comment cattle except Brahman X. Heifer values are in parentheses.

## MISSOURI WEEKLY CATTLE AUCTION SUMMARY

Compared to last week, steers and heifers very uneven with weaned, health program cattle steady to 5.00 higher and unweaned, unvaccinated calves steady to 5.00 lower. A typical October price spread was seen in most sale barns across the state, with the impending cold weather. Demand for feeders continues to depend a lot on health programs. No hard freeze has been seen yet, but the cooler weather has it on buyers' minds. The supply of feeders was moderate, with the majority of feeders under 600 lbs. Another concern going into the cooler months is hay supply. About 84 percent of the state has been impacted by some level of drought with extreme drought areas mostly in the central to west central areas. Some rainfall was received in areas of the state at the end of last week, but not enough to make much of an impact. Last week's Missouri Crop progress report showed the supply of hay was categorized: 29 percent adequate, 31 percent short, 40 percent very short. Negotiated sales gained a little bit of ground this week, as of Friday's report volume was just under 92,000 head, with live sales mostly 1.00 to 2.00 higher from 183.00 to 185.00, few up to 187.00, and dressed 2.00 to 4.00 higher at 290.00 to 292.00. Boxed beef closed on Friday at 300.80 for Choice and 275.49 for Select, 1.12 lower and 0.29 lower for the week, respectively. The Missouri Stocker formula consists of 3318 head with a weighted average weight of 536.01 and a price value of 277.76, 0.52 higher than a week ago. The steer/heifer spread is 34.51.

Missouri Stocker Formula - Steers

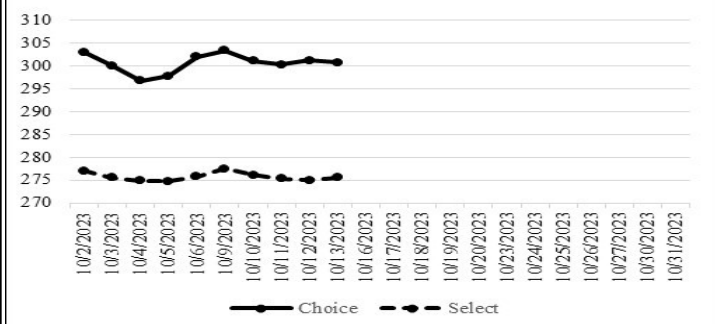


\*Graph is updated the first Monday of each month. Axis value ranges may be updated to reflect data points.

## NATIONAL BOXED BEEF CUTOUT/BOXED BEEF CUTS

<u>DATE</u>	<u>CHOICE</u>	<u>SELECT</u>	<u>TOTAL LOADS</u>
10/09	303.42	277.50	75
10/10	301.06	275.30	217
10/11	300.28	275.02	146
10/12	301.19	275.02	166
10/13	300.80	275.49	92
<b>5 Day Simple Average</b>	<b>301.35</b>	<b>275.89</b>	

Boxed Beef Cuts October 2023



\*Axis value ranges may be updated to reflect data points.

## WEEKLY LIVESTOCK SLAUGHTER 10/14/23

	<u>CATTLE</u>	<u>HOGS</u>	<u>SHEEP</u>
Week to Date:	617,000	2,609,000	34,000
Last Week:	628,000	2,562,000	34,000
Last Year:	662,000	2,555,000	32,000

The Weekly Market Summary, as well as historical summaries, are available on our website <https://agmarketnews.mo.gov/summaries>  
 Market News Hotline: 1-573-522-9244

**SOUTHWEST MISSOURI WEEKLY SUMMARY**

(Joplin and Springfield)

Receipts: 5,565 Week ago: 6,702 Year Ago: 8,801

Compared to last week, feeders very uneven from 7.00 lower to 3.00 higher. Slaughter cows uneven from 3.00 lower to 4.00 higher. Slaughter bulls steady to 3.00 lower.

**FEEDER STEERS:**  
Medium and Large 1

Table with 2 columns: Weight (300-400 lbs to 900-1000 lbs) and Price Range (280.00-322.50 to 218.00-227.00)

**FEEDER HEIFERS:**  
Medium and Large 1

Table with 2 columns: Weight (300-400 lbs to Pkg 900 lbs) and Price Range (268.00-279.00 to 205.00)

**FEEDER HOLSTEIN STEERS**  
Large 3

Table with 2 columns: Weight (350-400 lbs to Pkg 955 lbs) and Price Range (170.00-171.00 to 150.00)

**SLAUGHTER COWS:** Breaking and Boning (70-85% lean) 89.00-112.00; high dressing 101.00-125.00; low dressing 79.00-99.00. Lean (85-90%) 82.00-95.00

**SLAUGHTER BULLS:** Yield Grade 1-2 1140-2260 lbs. 108.00-125.00; high dressing 122.00-138.50; low dressing 92.00-106.00

**BRED COWS:** Medium and Large 1 2-8 yrs 1118-1540 lbs 2nd to 3rd stage 1575.00-1700.00. Medium and Large 1-2 2-8 yrs 1050-1392 lbs 1st stage 1200.00-1300.00, 2nd to 3rd stage 1150.00-1800.00; >8 yrs 1013-1238 lbs 2nd to 3rd stage 1100.00-1635.00 per head

**BRED HEIFERS:** Medium and Large 1-2 couple 2-4 yrs 1158 lbs 2nd to 3rd stage 1325.00 per head

**COW & CALF PAIRS:** Medium and Large 1-2 2-8 yrs 1190-1340 lbs with <150 to 300 lb calves 2000.00-2200.00 per pair.

**SOUTH CENTRAL MISSOURI WEEKLY SUMMARY**

(West Plains, Phillipsburg)

Receipts: 3,544 Week ago: 3,576 Year Ago: 5,551

Compared to last week, feeder calves 4.00 to 8.00 higher, spots 10.00 higher, yearlings mostly steady. Slaughter cows and bulls uneven from 4.00 lower to 3.00 higher.

**FEEDER STEERS:**  
Medium and Large 1

Table with 2 columns: Weight (300-400 lbs to 800-850 lbs) and Price Range (307.50-337.50 to 230.00-238.00)

**FEEDER HEIFERS:**  
Medium and Large 1

Table with 2 columns: Weight (350-400 lbs to 700-800 lbs) and Price Range (264.00-287.50 to 228.00-235.00)

**FEEDER HOLSTEIN STEERS**  
Large 3

Pkg 888 lbs. 127.00

**SLAUGHTER COWS:** Breaking and Boning (70-85% lean) 90.00-106.00, high dressing 100.00-120.00; low dressing 82.50-95.00. Lean (85-90%) 75.00-95.00

**SLAUGHTER BULLS:** Yield Grade 1-2 1120-2665 lbs. 105.00-130.00; high dressing 120.00-146.00; low dressing 90.00-118.00

**BRED COWS:** Medium and Large 1 2-8 yrs 1049-1395 lbs 2nd to 3rd stage 2050.00-2375.00. Medium and Large 1-2 2-8 yrs 1100-1495 lbs 2nd to 3rd stage 1300.00-1975.00, 1st stage 1200.00-1525.00 per head

**BRED HEIFERS:** Medium and Large 1-2 couple <2 yrs 1025-1075 lbs 1st to 3rd stage 1100.00-1150.00 per head

**COW & CALF PAIRS:** Medium and Large 1-2 2-8 yrs 1175-1335 lbs with 150-300 lb calves 1950.00-2275.00 per pair

**WEST CENTRAL MISSOURI WEEKLY SUMMARY**

(Kingsville, Windsor, Butler)

Receipts: 4,301 Week ago: 4,779 Year ago: 5,020

Compared to last week, feeders uneven with weaned steady to 3.00 higher, and unweaned, fleshy calves steady to 5.00 lower. Slaughter cows mostly steady to firm.

**FEEDER STEERS:**  
Medium and Large 1

Table with 2 columns: Weight (300-400 lbs to Pkg 806 lbs) and Price Range (310.00-335.00 to 248.00)

**FEEDER HEIFERS:**  
Medium and Large 1

Table with 2 columns: Weight (300-400 lbs to 17 hd 862 lbs) and Price Range (279.00-290.00 to 222.25)

**SLAUGHTER BULLS:** Yield Grade 1-2 1380-2080 lbs 115.00-132.00; high dressing 134.00-135.00, low dressing 113.00-113.50

**SLAUGHTER COWS:** Breaking and Boning (70-85% lean) 89.00-115.00, high dressing 105.00-127.50 low dressing 91.00-92.00. Lean (85-90%) 84.00-106.00

**BRED COWS:** Medium and Large 1-2 2-8 yrs 1100-1250 lbs 1nd to 3rd stage 1200.00-1600.00 per head

**COW & CALF PAIRS:** Medium and Large 1-2 2-8 yrs 1150-1575 lbs with <150 to 300 lb calves 1800.00-2350.00 per head

**NORTHEAST MISSOURI WEEKLY SUMMARY**

(Bowling Green, Kingdom City, Palmyra)

Receipts: 2,596 Week ago: 4,911 Year ago: 3,872

Compared to last week, steers under 550 lbs mostly 5.00 to 8.00 lower, spots 10.00 lower, 550-750 lbs lower undertone, pot of 910 lbs 7.00 lower. Heifers under 600 lbs mostly 5.00 to 10.00 lower, over 600 lbs lower undertone. Slaughter cows steady to 5.00 lower.

**FEEDER STEERS:**  
Medium and Large 1

Table with 2 columns: Weight (400-500 lbs to 900-950 lbs) and Price Range (299.00-319.00 to 237.50-239.50)

**FEEDER HEIFERS:**  
Medium and Large 1

Table with 2 columns: Weight (400-500 lbs to 30 hd 842 lbs) and Price Range (268.00-286.00 to 225.75)

**SLAUGHTER BULLS:** Yield Grade 1-2 1455-2245 lbs 115.00-135.00; low dressing 108.00-120.00

**SLAUGHTER COWS:** Breaking and Boning, (70-85% lean) 103.00-115.50; high dressing 113.00-125.00; low dressing 91.00-103.00. Lean (85-90%) 91.00-99.50

**SLAUGHTER STEERS:** Choice 2 -3 182.50-185.50

**SLAUGHTER HEIFERS:** Choice 2-3 182.50-186.00

**BRED COWS:** Scarce

**COW/CALF PAIRS:** Scarce

**NORTH CENTRAL MISSOURI WEEKLY SUMMARY**

(Macon, Unionville, Green City, New Cambria)

Receipts: 2,060 Week ago: 969 Year ago: 739

Compared to two weeks ago, feeders uneven from 3.00 lower to 5.00 higher. Slaughter cows 3.00 to 10.00 lower.

\*Some sale barns on a bi-weekly schedule and may not have a sale each week.

**FEEDER STEERS:**  
Medium and Large 1

Table with 2 columns: Weight (Pkg 406 lbs to 46 hd 814 lbs) and Price Range (306.00 to 253.75)

**FEEDER HEIFERS:**  
Medium and Large 1

Table with 2 columns: Weight (300-400 lbs to 650-700 lbs) and Price Range (268.00-292.50 to 242.25)

**SLAUGHTER BULLS:** Yield Grade 1-2 1525-2065 lbs 110.00-132.50

**SLAUGHTER COWS:** Breaking and Boning, (70-85% lean) 90.00-112.00, high dressing 82.00-115.00; low dressing 85.00-100.00. Lean (85-90%) 80.00-98.00

**BRED COWS:** Scarce

**COW & CALF PAIRS:** Scarce

**SOUTHEAST MISSOURI WEEKLY SUMMARY**

(Jackson and Farmington)

Receipts: 983 Week ago: 1,315 Year ago: 1,583  
 Compared to last week, steers and heifers uneven from 10.00 lower to 4.00 higher, majority of offering lower. Slaughter cows and bulls 3.00 to 5.00 lower.

**FEEDER STEERS:**  
 Medium and Large 1

300-400 lbs. 264.00-312.00  
 400-500 lbs. 257.00-280.00  
 500-600 lbs. 250.00-270.00  
 600-700 lbs. 236.00-250.00  
 Few 750-800 lbs. 220.00-223.00  
 Pkg 835 lbs. 215.00

**FEEDER HEIFERS:**  
 Medium and Large 1

300-400 lbs. 235.00-272.00  
 400-500 lbs. 230.00-260.00  
 500-600 lbs. 220.00-252.00  
 600-700 lbs. 210.00-247.00  
 750-800 lbs. 212.00-219.00

**SLAUGHTER BULLS:** Yield  
 Grade 1-2 1010-2205 lbs. 90.00-105.00; high dressing 105.00-124.00; low dressing couple 67.00-80.00

**SLAUGHTER COWS:** Breaking and Boning (75-85% lean) 75.00-106.00; high dressing 92.00-114.00. Lean (85-90% lean) 64.00-82.00

**BRED COWS:** Medium and Large 2 2-8 yrs 1020-1500 lbs 1st to 2nd stage 950.00-1200.00, 2nd to 3rd stage 1235.00-1925.00 per head

**COW & CALF PAIRS:** Medium and Large 2 2-8 yrs 1000-1025 lbs with 150-300 lb calves 1450.00-1900.00 per pair

**EAST CENTRAL MISSOURI WEEKLY SUMMARY**

(Cuba, Vienna)

Receipts: 1,377 Week ago: 1,547 Year ago: 1,612  
 Compared to last week, steers 5.00 to 8.00 higher, except some unweaned steady to 5.00 lower. Heifers 3.00 to 12.00 lower. Slaughter cows steady.

**FEEDER STEERS:**  
 Medium and Large 1

300-350 lbs. 325.00-332.00  
 400-500 lbs. 285.00-333.00  
 500-600 lbs. 274.00-295.00  
 600-700 lbs. 250.00-276.00  
 700-750 lbs. 244.00-250.00

**FEEDER HEIFERS:**  
 Medium and Large 1

400-500 lbs. 249.00-264.50  
 500-600 lbs. 232.00-249.00  
 Pkg 730 lbs. 215.00  
 Pkg 905 lbs. 211.50

**SLAUGHTER BULLS:** Yield  
 Grade 1-2 1310-2555 lbs 110.00-127.00; low dressing 102.00-116.00

**SLAUGHTER COWS:** Breaking and Boning, (70-85% lean) 91.50-104.50; high dressing 103.50-111.00 Lean (85-90%) 81.00-94.00

**BRED COWS:** Medium and Large 1-2 5-8 ys 1180-1320 lbs 2nd to 3rd stage 1150.00-1600.00 per head

**COW & CALF PAIRS:** Scarce

**NORTHWEST MISSOURI WEEKLY SUMMARY**

(Tina)

Receipts: 869 Week Ago: 1,050 Year Ago: 1,002  
 Compared to last week, undertone was steady to firm on feeders on comparable sales. Slaughter cows and bulls steady.

**FEEDER STEERS:**  
 Medium and Large 1

300-400 lbs. 313.00-327.50  
 400-500 lbs. 297.50-317.50  
 500-600 lbs. 287.50-317.00  
 600-700 lbs. 277.00-285.00

**FEEDER HEIFERS:**  
 Medium and Large 1

Pkg 383 lbs. 285.00  
 400-500 lbs. 268.00-283.50

**SLAUGHTER BULLS:** Yield  
 Grade 1-2 1455-2070 lbs 109.00-127.50

**SLAUGHTER COWS:** Breaking and Boning, (70-85% lean) 93.00-109.00; couple high dressing 112.00-119.00; low dressing 82.00-92.00. Lean (85-90%) 86.50-108.00

**BRED COWS:** Scarce

**COW & CALF PAIRS:** Scarce

**AFTERNOON NATIONAL SLAUGHTER CATTLE REVIEW**

Thus far for Friday in the Southern Plains negotiated cash trade has been limited on moderate demand. The most recent market in the Southern Plains was Wednesday with live FOB purchases at 183.00 In Nebraska negotiated cash trade has been slow on moderate demand. Compared to Thursday live FOB purchases traded 1.00 higher at 186.00, on a light test. The most recent dressed delivered market was Thursday at 292.00. In the Western Cornbelt negotiated cash trade has been slow on moderate demand. There has been a few purchases at 187.00, however not enough purchases for a market trend. The most recent live FOB purchases was Thursday from 184.00- 186.00 mostly at 185.00. The most recent dressed delivered purchase market was Thursday from 290.00-292.00.

**Negotiated Cash Sales:**

<b>Confirmed:</b>	9,714	<b>Week Ago:</b>	3,587	<b>Year Ago:</b>	9,879
<b>Week to date:</b>	91,849	<b>Week Ago:</b>	89,959	<b>Year Ago:</b>	68,242

<u>Live Basis</u>	<u>Steers</u>	<u>Heifers</u>
<b>Over 80% Choice</b>	184.00-187.00, avg 186.06	182.00-186.00, avg 185.56
<b>65-80% Choice</b>	186.00	184.00-186.00, avg 185.21
<b>35-65% Choice</b>	184.00	-
<b>0-35% Choice</b>	-	-
<b>Total All Grades</b>	184.00-187.00, avg 185.89	182.00-186.00, avg 185.37
<b><u>Dressed Basis</u></b>		
<b>Over 80% Choice</b>	292.00-294.00, avg 293.60	-
<b>65-80% Choice</b>	292.00	-
<b>35-65% Choice</b>	-	-
<b>0-35% Choice</b>	-	-
<b>Total All Grades</b>	292.00-294.00, avg 293.25	-

<u>All Beef Type Steers/Heifers</u>	<u>Head</u>	<u>Avg Wt</u>	<u>Price Range</u>	<u>Wtd Avg</u>
Live FOB	8,416	1426.6	180.00-187.50	185.84
Live Del	106	1370.3	185.00-186.00	185.64
Dressed Del	1,091	907.2	292.00-294.00	293.68
Dressed FOB	70	953.0	290.00	290.00

**WEEKLY COMMODITY FUTURES TRENDS**

Compared to last week, Live Cattle 0.08 to 2.05 higher, except Apr and Jun 0.07 to 0.72 lower, Lean Hogs 0.40 to 4.07 lower, Feeder Cattle Oct and Nov 0.70 to 1.50 higher, others 1.52 to 2.30 lower.

**Daily Futures Closes**

	Mon.	Tues.	Wed.	Thu.	Fri.
<b>Cattle</b>					
Oct	182.37	182.57	184.50	185.40	185.12
Dec	185.35	185.00	186.97	187.80	186.75
Feb	189.62	189.32	191.25	192.00	190.92
Apr	192.80	192.40	193.97	195.00	193.85
Jun	187.27	186.75	187.85	188.97	187.70
<b>Lean Hogs</b>					
Oct	81.97	81.95	82.15	82.10	81.92
Dec	72.47	71.42	69.97	70.10	69.50
Feb	76.67	75.70	74.67	75.02	74.35
Apr	82.50	81.85	81.00	81.52	81.30
May	87.22	86.87	86.12	86.62	86.62
<b>Fdr Cat</b>					
Oct	246.90	247.95	250.17	252.02	249.87
Nov	249.65	250.35	252.00	253.57	251.57
Jan	251.85	251.85	253.30	254.47	252.25
Mar	255.42	254.75	255.87	256.95	254.92
Apr	259.55	258.85	259.90	261.02	259.27
<b>Milk</b>					
Oct	16.88	16.85	16.84	16.93	16.84
Nov	17.50	17.33	17.23	17.30	17.41
Dec	17.69	17.59	17.49	17.60	17.59

**WEEKLY COMMODITY GRAIN FUTURES TRENDS**

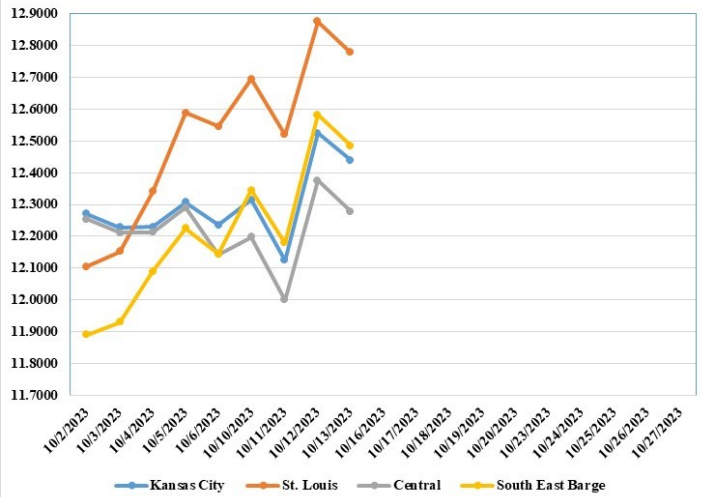
Compared to last week, Soybeans 0.12 to 0.16 higher, Wheat 0.01 to 0.11 higher, Corn 0.01 higher, KC Wheat 0.02 to 0.04 lower, Soybean Meal 10.60 to 20.00 higher.

Daily Grain Futures Closes

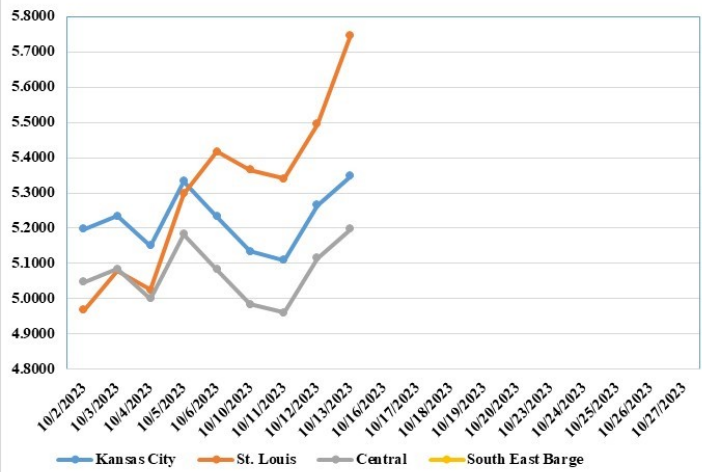
	Mon.	Tues.	Wed.	Thu.	Fri.
<b>Soybeans</b>					
Nov	1264 1/4	1271 1/2	1252 1/2	1290	1280 1/4
Jan	1282 1/2	1289 1/4	1272 1/4	1308 3/4	1300
Mar	1295 3/4	1300 1/2	1285	1319 1/2	1312 3/4
May	1308 1/2	1312	1298	1332	1326
Jul	1315 1/4	1317 3/4	1304 3/4	1338 1/4	1332 1/2
<b>Wheat</b>					
Dec	572 3/4	558 1/2	556	571 1/2	579 3/4
Mar	603 1/2	590	587 1/4	601 1/2	606 1/4
May	623 1/4	610 1/2	607 1/4	619 3/4	622 1/2
Jul	640 3/4	628 3/4	625 1/4	636 1/4	636 3/4
Sep	655	643 1/2	640	650 1/4	649 1/2
<b>Corn</b>					
Dec	488 1/4	485 1/2	488	496	493 1/4
Mar	503 3/4	501 1/4	503 3/4	511 1/2	508 1/2
May	512	509 1/4	511 3/4	519 1/2	516 1/2
Jul	517	514 1/2	516 3/4	524 1/4	521 3/4
Sep	513	511 1/4	513 3/4	519 3/4	517 3/4
<b>KC Wheat</b>					
Dec	686	671 1/4	667 1/4	675	669
Mar	694 3/4	680 1/4	676 1/4	684	678 1/2
May	700 1/2	686 1/4	682	690	684 3/4
Jul	704 1/4	690 1/4	686	693 1/2	688 1/4
Sep	712 3/4	699	694 3/4	702 3/4	698
<b>SB Meal</b>					
Oct	370.90	372.003	374.30	387.60	387.60
Dec	374.60	77.50	377.1	392.90	390.00
Jan	373.50	376.20	0375.00	389.20	385.90
Mar	371.00	373.60	371.80	383.90	381.00
May	371.20	373.40	371.40	382.80	379.70

**MONTHLY GRAIN CROP**

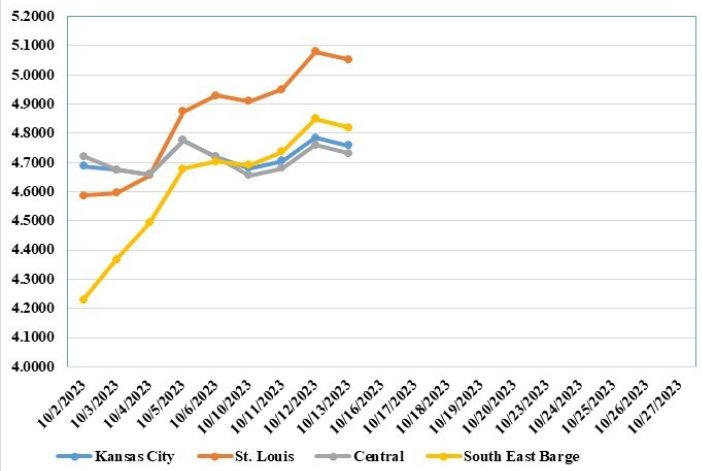
October 2023 Soybean Bids



October 2023 Wheat Bids



October 2023 Corn Bids



\*Axis value ranges may be updated to reflect data points.

**MISSOURI GRAIN WEEKLY TRENDS**

Compared to last week, Soybeans 0.14 to 0.34 higher, Wheat 0.11 to 0.55 higher, Corn 0.01 to 0.16 higher, Sorghum 0.01 higher.

Area	#1 Soybeans	#2 Soft Wheat	#2 Corn	#2 Grain Sorghum
<b>Kansas City</b>				
Friday**	12.10-12.41	5.23	4.67-4.77	5.17
Monday	Holiday			
Tuesday	12.17-12.47	5.14	4.61-4.76	5.11
Wednesday	11.98-12.28	5.11	4.63-4.78	5.13
Thursday	12.35-12.65	5.27	4.71-4.86	5.21
Friday	12.30-12.55	5.35	4.68-4.83	5.18
<b>St. Louis</b>				
Friday**	12.51-12.58	5.40-5.43	4.89-4.97	5.67
Monday	Holiday			
Tuesday	12.67-12.73	5.34-5.40	4.88-4.95	5.61
Wednesday	12.51-12.54	5.31-5.37	4.93-4.97	5.63
Thursday	12.87-12.88	5.47-5.53	5.08	5.71
Friday	12.77-12.78	5.55-5.95	5.05	5.68
<b>Central</b>				
Friday**	12.11-12.16	4.98-5.18	4.72	---
Monday	Holiday			
Tuesday	12.17-12.22	4.89-5.09	4.66	---
Wednesday	11.98-12.03	4.86-5.06	4.68	---
Thursday	12.35-12.40	5.02-5.22	4.76	---
Friday	12.25-12.30	5.10-5.30	4.73	---
<b>S.E. MO</b>				
Friday**	11.95-12.31	---	4.67-4.77	---
Monday	Holiday			
Tuesday	12.28-12.38	---	4.67-4.71	---
Wednesday	12.09-12.28	---	4.70-4.78	---
Thursday	12.48-12.65	---	4.83-4.86	---
Friday	12.38-12.55	---	4.79-4.83	---

(PRICES PER BUSHEL) \*NEW CROP \*\*PREVIOUS WEEK'S PRICES  
\*Bids calculated using Kansas City, St. Louis, and St. Joseph bids

**WHOLESALE FEEDSTUFFS PRICES  
(DOLLARS PER TON-BULK BASIS)**

Area	Soybean Hulls Pellets	Soybean Meal 46.5-48%	Corn Gluten Pellets 21%	Wheat Middlings
Kansas City	191.25	393.50	235.00	165.00
St. Louis	n/a	n/a	235.00	155.00

**CROP PRODUCTION**

**Corn** production for grain is forecast at 15.1 billion bushels, down less than 1 percent from the previous forecast but up 10 percent from 2022. Based on conditions as of October 1, yields are expected to average 173.0 bushels per harvested acre, down 0.8 bushel from the previous forecast and down 0.4 bushel from last year. Area harvested for grain, forecast at 87.1 million acres, is unchanged from the previous forecast but up 10 percent from the last year.

**Soybean** production for beans is forecast at 4.10 billion bushels, down 1 percent from the previous forecast and down 4 percent from 2022. Based on conditions as of October 1, yields are expected to average 49.6 bushels per acre, down 0.5 bushel from the previous forecast but equal to 2022. Area harvested for beans in the United States is forecast at 82.8 million acres, unchanged from the previous forecast but down 4 percent from 2022.

**All cotton** production is forecast at 12.8 million 480-pound bales, down 2 percent from the previous forecast and down 11 percent from 2022. Based on conditions as of October 1, yields are expected to average 767 pounds per harvested acre, down 19 pounds from the previous forecast and down 183 pounds from 2022. Upland cotton production is forecast at 12.5 million 480-pound bales, down 2 percent from the previous forecast and down 11 percent from 2022. Pima cotton production is forecast at 356,000 bales, unchanged from the previous forecast but down 24 percent from 2022. All cotton area harvested is forecast at 8.02 million acres, unchanged from the previous forecast but up 10 percent from 2022

**MISSOURI CROP PROGRESS AND CONDITION**

	Week Ending			2018-2022 Average
	10/08/23	10/01/23	10/08/22	
Corn mature	96	92	91	93
Corn harvested	56	42	50	54
Soybeans dropping leaves	91	82	85	70
Soybeans harvested	27	12	20	17
Cotton bolls opening	92	85	96	93
Cotton harvested	23	10	13	20
Winter wheat planted	14	7	11	14
Winter wheat emerged	2	1	3	5

**MISSOURI WEEKLY HAY SUMMARY 10/12/23**

A few places across the state got some rain to settle dust, with a little improvement to drought conditions. About 84 percent of Missouri is included on the drought monitor, with extreme drought in the central to west central areas. Cooler temperatures in the morning showed a hint of fall before the warmer temperatures later this week. The cooler weather is expected back by the weekend. Some late season hay is still being baled and there are some reports of corn stalks being baled behind the combines. Hay prices are mostly steady and demand is moderate.  
 Alfalfa - Supreme 250.00-300.00, small square 10.00-15.00 per bale  
 Alfalfa - Premium 200.00-250.00  
 Alfalfa - Good 150.00-200.00, small square 5.00-10.00 per bale  
 Alfalfa - Fair 125.00-150.00  
 Alfalfa/grass mix - Good/Premium small square 5.00-10.00 per bale  
 Mixed grass - Good/Premium 150.00-225.00  
 Mixed grass - Fair/Good 100.00-175.00, small square 5.00-8.00 per bale  
 Mixed grass - Fair 50.00-100.00 per large round bale  
 Wheat straw - 4.00-7.00 per small square bale

Please Note: The above volumes (tonnage, acres, and bales) listed are for confirmed trades only, it does not include estimated volume (tonnage) for bids or offers to the trade. List your hay for sale at: [Hay Listing Online Form](#). Explanation of Hay Quality Guidelines: [Hay Quality Designation Guidelines](#). Glossary of Terms: [Livestock, Poultry, & Grain Hay Terms](#)

**MISSOURI WEEKLY SHEEP/GOAT AUCTION SUMMARY**

Receipts: 495 Week Ago: 804 Last Year: 490

**SHEEP:** Feeder Lambs: Small and Medium 1-2 pkg 35 lbs 200.00.

Slaughter lambs Choice and Prime 1-3 hair 40-85 lbs 190.00-220.00.  
 Choice 1-2 hair 40-80 lbs 167.50-185.00.

Replacement ewes Medium and Large 1-2 2-4 yrs 77-92 lbs exp 140.00-142.50; 4-6 yrs 105 lbs exp 112.50.

**GOATS:** Feeder Kids: Selection 1-2 pkg 38 lbs 200.00.

Slaughter kids Selection 1-2 45-95 lbs 185.00-195.00. Selection 2 50-70 lbs 172.50-182.50.

Slaughter nannies/does Selection 1-2 100-155 lbs 180.00.

Explanatory Notes: Stage - Represents estimated lambing/kidding period (Open, Exp=exposed, Bred, Fall = Sep-Nov, Win = Dec-Feb, Spr = Mar-May, Sum=Jun-Aug; w/s = woolled and shorn; /hd= per head; /fam=per family  
 All price CWT unless otherwise noted.

**MISSOURI DROUGHT MONITOR**

Date	None	D0	D1	D2	D3	D4
10/10/23	16.12	24.18	31.67	17.73	10.30	0
10/03/23	14.59	26.27	31.66	18.44	9.04	0
10/11/22	0	27.14	35.64	23.84	10.83	2.55

Reflects percentage of Missouri impacted by drought. D0 Abnormally Dry; D1 Moderate Drought; D2 Severe Drought; D3 Extreme Drought; D4 Exceptional Drought

**NATIONAL DIRECT DELIVERED FEEDER PIG REPORT**

10/13/23 Receipts: 112,727 Week ago: 114,545 Year Ago: 85,196  
 Early weaned pigs steady to 1.00 higher. All feeder pigs steady to 3.00 higher. Early weaned pigs 10-12 lbs. basis: Cash 66,600 head 13.00-30.00, weighted average 23.68.  
 Formula 35,069 head 30.69-55.24 weighted average 44.98  
 Feeder pigs 40 pounds basis: Cash 11,058 head 24.00-49.50, weighted average 44.35

**NATIONAL DAILY DIRECT PRIOR DAY HOG REPORTS FOR 10/13/23**

**BARROWS AND GILTS (Carcass Basis):** 4,372 head  
 Base Carcass Price 68.00-76.00, weighted average 73.77

**SOWS (Live Basis):** 6,588 head  
 300-500 lbs. 17.00-49.00  
 Over 500 lbs. 24.00-51.00

**MISSOURI WEEKLY DIRECT SLAUGHTER CATTLE REPORT 10/13/23**

Weekly Receipts: 440 Week ago: 280 Year ago:  
 Trading as of Friday morning, trade is light to moderate with flat dressed sales 2.00 to 3.00 higher and grid dressed sales 3.00 higher.

**LIVE STEERS & HEIFERS:** No sales reported  
**DRESSED STEERS & HEIFERS:** 5 loads Flat 291.00-292.00

**GRADE AND WEIGHT (Grid):** late last Fri 4 loads 294.00; 2 loads Thu 297.00

Click here for the current [National Crop Progress](#)  
 Click here for the current [Missouri Crop Progress](#)  
 The current hay directory can be found at: [Hay Directory](#).