

Weekly Market Summary

Published by:
Missouri Department of Agriculture
Ag Business Development Division
Market News Program



Chris Chinn, Director
 Jill Wood, Division Director
 Tony Hancock, Editor
[agmarketnews.mo.gov](http://www.ams.usda.gov/marketnews.htm)
<http://www.ams.usda.gov/marketnews.htm>

Michael L. Parson, Governor

Volume XLIII, Number 45 ♦ P.O. Box 630, Jefferson City, MO 65102 ♦ (573) 751-4211 ♦ Mon, Nov 13, 2023

MISSOURI WEEKLY FEEDER CATTLE WEIGHTED AVERAGE REPORT

Receipts: 35,458 Week ago: 17,719 Year ago: 34,667

Steers and Heifers Medium and Large 1—Weighted average weights and prices

STEERS: Medium and Large 1

331 lbs. 296.32	522 lbs. 282.11	735 lbs. 242.38	927 lbs. 225.43
379 lbs. 304.63	573 lbs. 267.06	766 lbs. 239.27	986 lbs. 216.76
429 lbs. 295.29	623 lbs. 257.00	823 lbs. 230.84	
475 lbs. 293.82	672 lbs. 246.97	870 lbs. 233.13	

HEIFERS: Medium and Large 1

276 lbs. 257.43	472 lbs. 251.82	677 lbs. 236.28	868 lbs. 206.79
322 lbs. 262.15	520 lbs. 243.83	734 lbs. 233.53	940 lbs. 200.49
378 lbs. 255.79	572 lbs. 243.36	760 lbs. 222.60	977 lbs. 208.75
429 lbs. 256.66	625 lbs. 231.88	811 lbs. 212.44	

MISSOURI STEER (HEIFER) STOCKER FORMULA 11/10/2023

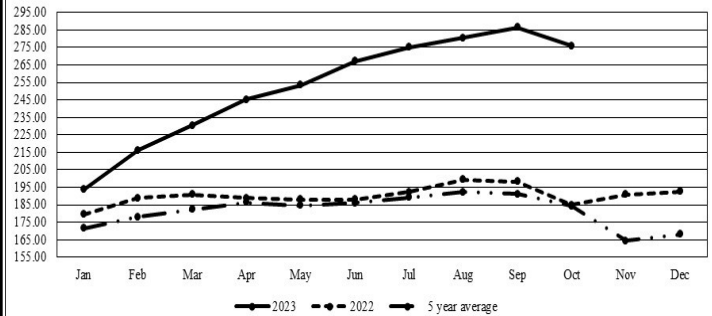
Monday's Missouri Stocker formula consists of **7278 (6385)** head with a weighted average weight of **544.96 (532.32)** lbs. and a price value of **263.94 (232.32)**, 11.44 lower (7.30 lower) than last week.

This a rolling seven day calculated weighted value which combines all Feeder Steers reported by MDA/USDA Market News Service weighing from 400-649 lbs. in the Medium and Large 1 and Medium and Large 1-2 frame and muscle classifications, including all comment cattle except Brahman X. Heifer values are in parentheses.

MISSOURI WEEKLY CATTLE AUCTION SUMMARY

Compared to last week, feeders sold 10.00 to 15.00 lower. Markets started out the week slightly higher following last week's gains but that took a sharp turn Tuesday as futures markets closed much lower. Technical sell offs and computerized trading in this modern fast paced world resulted in futures markets seeing big losses for the week. Buyers struggled at the barns as it was a full time job reducing bids fast enough to get cattle bought in a way that they could still protect them. The supply of feeders was moderate and included a few special type sales. Calves continue to make up much of the offering but there was several load lots of yearlings. Demand was light to moderate as buyers were just not willing to get into many bidding wars with the markets falling at such a rate. Once again this week there was several load lots of 700-750 lb. heifers sold at various action. Most sold from 230.00-237.50 with one load at 243.50 that was nearly 10.00 lower than equal quality and type of heifers sold for last week. Light seven weight steers only saw a few instances over 250.00 this week and it wasn't but weeks ago some of those loads were into the 280's. Along the same lines only a very few light five weight steers were able to find any prices that began with a 3 this week. Boxed beef cutouts lost a bit more ground this week. Choice closed at 300.46, down 2.34 and select closed at 267.42, down 4.59 compared to last Friday. Negotiated feedlot sales as of the Friday afternoon came in at only 47K head chain speed continues to be slow as packers reduce slaughter thus reducing need to negotiate for any cattle. Live sales were reported mostly from 178.00-181.50 and dressed sales at 283.00-287.00. Missouri Stocker formula consists of 7278 head with a weighted average weight of 544.96 lbs. and a price value of 263.94, 11.44 lower than a week ago. The steer/heifer spread is 31.22.

Missouri Stocker Formula - Steers

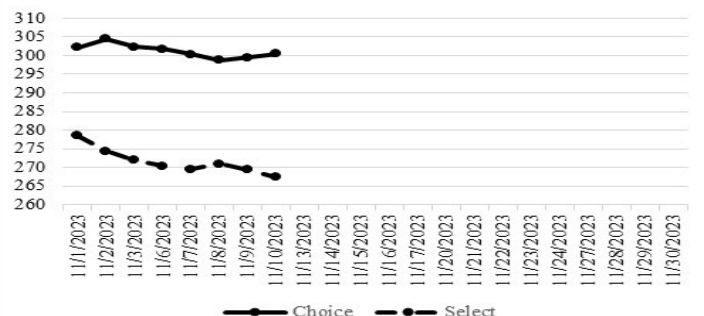


*Graph is updated the first Monday of each month. Axis value ranges may be updated to reflect data points.

NATIONAL BOXED BEEF CUTOUT/BOXED BEEF CUTS

<u>DATE</u>	<u>CHOICE</u>	<u>SELECT</u>	<u>TOTAL LOADS</u>
11/06	301.72	270.36	87
11/07	300.38	269.48	207
11/08	298.75	271.03	135
11/09	299.42	269.42	133
11/10	300.46	267.42	138
5 Day Simple Average	300.15	269.54	

Boxed Beef Cuts November 2023



*Axis value ranges may be updated to reflect data points.

WEEKLY LIVESTOCK SLAUGHTER 11/11/23

	<u>CATTLE</u>	<u>HOGS</u>	<u>SHEEP</u>
Week to Date:	618,000	2,576,000	38,000
Last Week:	632,000	2,671,000	36,000
Last Year:	670,000	2,501,000	37,000

The Weekly Market Summary, as well as historical summaries, are available on our website <https://agmarketnews.mo.gov/summaries>
 Market News Hotline: 1-573-522-9244

SOUTHWEST MISSOURI WEEKLY SUMMARY

(Joplin and Springfield)

Receipts: 10,495 Week ago: 4,330 Year Ago: 13,239

Compared to last week, feeders uneven with early week 3.00 to 9.00 higher and late week 5.00 to 9.00 lower. Slaughter cows steady to 5.00 lower and bulls steady to 4.00 lower.

FEEDER STEERS:
Medium and Large 1

300-400 lbs.	276.00-325.00
400-500 lbs.	265.00-320.00
500-600 lbs.	246.00-295.00
600-700 lbs.	237.00-270.50
700-800 lbs.	219.00-254.00
800-900 lbs.	226.00-236.00
900-1000 lbs.	217.00-224.00

FEEDER HEIFERS:
Medium and Large 1

300-400 lbs.	240.00-297.00
400-500 lbs.	223.00-282.00
500-600 lbs.	211.00-259.00
600-700 lbs.	220.00-236.00
700-800 lbs.	204.00-239.25
800-900 lbs.	207.50-221.00
13 hd 945 lbs.	191.00

FEEDER HOLSTEIN STEERS
Large 3

300-400 lbs.	170.00-180.00
400-500 lbs.	150.00-184.00
500-600 lbs.	160.00-183.00
600-700 lbs.	159.00-173.50
700-800 lbs.	153.00-165.00
25 hd 876 lbs.	165.00
900-1000 lbs.	150.00-166.00

BRED COWS: Medium and Large 1 2-8 yrs 1131-1420 lbs 2nd to 3rd stage 1700.00-1900.00. Medium and Large 1-2 2-8 yrs 875-1430 2nd to 3rd stage 1225.00-1550.00, 1st stage 1385.00-1475.00; >8 yrs 1140-1291 lbs 2nd to 3rd stage 1225.00-1375.00 per head

BRED HEIFERS: Medium and Large 1 2-4 yrs 1230 lbs 1st stage 1535.00. Medium and Large 1-2 <2 yrs 875 lbs 2nd to 3rd stage 1535.00 per head

SLAUGHTER COWS: Breaking and Boning (70-85% lean) 81.00-104.00, high dressing 94.50-107.50; low dressing 71.00-92.00. Lean (85-90%) 76.00-94.50.

SLAUGHTER BULLS: Yield Grade 1-2 1310-2515 lbs. 105.00-119.50; high dressing 117.00-130.00; low dressing 80.00-106.00

COW & CALF PAIRS: Medium and Large 1-2 2-8 yrs 1095 lbs with 150-300 lb calves 1950.00; >8 yrs 1338-1380 lbs with 150-300 lb calves 1450.00-1500.00 per pair

SOUTH CENTRAL MISSOURI WEEKLY SUMMARY

(West Plains, Phillipsburg)

Receipts: 5,452 Week ago: 3,793 Year Ago: 8,578

Compared to last week, steers and heifers 3.00 to 6.00 lower, spots 15.00 to 25.00 lower late week. Slaughter cows 2.00 to 3.00 lower. Slaughter bulls 2.00 to 5.00 lower.

FEEDER STEERS:
Medium and Large 1

300-400 lbs.	297.50-332.50
450-500 lbs.	268.00-310.00
500-600 lbs.	247.50-286.00
600-700 lbs.	230.00-263.00
700-800 lbs.	222.00-243.00
Pkg 841 lbs.	216.00

FEEDER HEIFERS:
Medium and Large 1

300-400 lbs.	245.00-274.00
400-500 lbs.	225.00-262.50
500-550 lbs.	216.50-245.00
600-700 lbs.	189.00-229.00
700-750 lbs.	194.00-224.00

FEEDER HOLSTEIN STEERS
Large 3

Scarce Scarce

SLAUGHTER COWS: Breaking and Boning (70-85% lean) 80.00-98.00, high dressing 95.00-108.0; low dressing 75.00-86.00. Lean (85-90%) 72.50-87.00

SLAUGHTER BULLS: Yield Grade 1-2 1230-2210 lbs. 104.00-120.00; high dressing 113.50-133.00; low dressing 80.00-103.00

BRED COWS: Medium and Large 1-2 2-8 yrs 1065-1680 lbs 2nd to 3rd stage 1275.00-1600.00 per head

BRED HEIFERS: Scarce

COW & CALF PAIRS: Medium and Large 1-2 2-8 yrs 1186-1230 lbs with 150-300 lb calves 1675.00-1750.00 per pair

WEST CENTRAL MISSOURI WEEKLY SUMMARY

(Kingsville, Windsor, Butler)

Receipts: 8,161 Week ago: 3,822 Year ago: 5,656

Compared to last week, steer and heifer calves sold steady to 1.00 lower and yearlings sold 5.00-10.00 lower. Slaughter cows sold 2.00-6.00 lower.

FEEDER STEERS:
Medium and Large 1

300-400 lbs.	278.00-335.00
400-500 lbs.	275.00-316.00
500-600 lbs.	246.00-314.50
600-700 lbs.	235.00-269.00
700-800 lbs.	224.00-241.75
800-850 lbs.	224.75-235.00
900-950 lbs.	216.50-227.85

FEEDER HEIFERS:
Medium and Large 1

300-400 lbs.	224.00-264.00
400-500 lbs.	239.00-260.00
500-600 lbs.	224.00-253.50
600-700 lbs.	216.00-247.50
700-800 lbs.	194.00-237.00
800-900 lbs.	209.00-210.00

SLAUGHTER BULLS: Yield Grade 1-2 1285-2045 lbs 111.50-122.50; high dressing 123.00-129.00, low dressing 107.50-110.50

SLAUGHTER COWS: Breaking and Boning (70-85% lean) 77.50-102.00, high dressing 93.50-114.00 low dressing 50.00-86.00. Lean (85-90%) 64.00-83.00

BRED COWS: Medium and Large 1-2 5-8 yrs 1347 lbs 2nd to 3rd stage 1375.00 per head

COW & CALF PAIRS: Medium and Large 1 5-8 yrs 1450 lbs with 150-300 lb calves 1935.00 per pair

NORTHEAST MISSOURI WEEKLY SUMMARY

(Bowling Green, Kingdom City, Palmyra)

Receipts: 6,294 Week ago: 5,155 Year ago: 4,378

Compared to last week, steers and heifers early week steady to 5.00 lower except spots 5.00 to 8.00 lower on heifers. Late week feeders mostly 10.00 to 20.00 lower. Slaughter cows: breaking cows mostly 6.00 to 12.00 lower, boning and lean cows steady to 5.00 lower.

FEEDER STEERS:
Medium and Large 1

400-500 lbs.	271.00-300.00
500-600 lbs.	250.00-299.75
600-700 lbs.	229.00-266.00
700-800 lbs.	227.00-244.25
800-900 lbs.	229.00-243.75

FEEDER HEIFERS:
Medium and Large 1

400-500 lbs.	245.00-271.00
500-600 lbs.	225.50-263.50
600-700 lbs.	224.00-255.50
700-750 lbs.	207.50-243.50
60 hd 867 lbs.	205.75
900-1000 lbs.	200.75-203.25

SLAUGHTER BULLS: Yield Grade 1-2 1330-2350 lbs 114.00-138.00; high dressing ind 144.50; low dressing 87.00-113.00

SLAUGHTER COWS: Breaking and Boning, (70-85% lean) 90.00-108.50; high dressing 100.50-120.00; low dressing 81.00-99.50. Lean (85-90%) 83.00-95.00

SLAUGHTER STEERS: Choice 2-3 177.00-182.75. Select and Choice 2-3 171.00-177.50. Select 1-2 159.50-165.00.

SLAUGHTER HEIFERS: Choice 2-3 182.00-184.00. Select 1-2 160.50

BRED COWS: Scarce

COW/CALF PAIRS: Scarce

NORTH CENTRAL MISSOURI WEEKLY SUMMARY

(Macon, Unionville, Green City, New Cambria)

Receipts: 3,569 Week ago: 3,813 Year ago: 3,672

Compared to last week, steers and heifers 5.00 to 10.00 lower, spots 15.00 lower. Slaughter cows steady to 5.00 lower.

FEEDER STEERS:
Medium and Large 1

400-500 lbs.	285.00-323.00
500-600 lbs.	266.00-309.00
600-700 lbs.	242.50-269.00
850-900 lbs.	236.75-242.00
62 hd 943 lbs.	238.00

FEEDER HEIFERS:
Medium and Large 1

400-500 lbs.	264.00-278.00
500-600 lbs.	243.00-265.00
73 hd 685 lbs.	245.00
700-750 lbs.	230.00-236.50

SLAUGHTER BULLS: Yield Grade 1-2 1470-2655 lbs 110.00-132.00; low dressing 107.00-117.00

SLAUGHTER COWS: Breaking and Boning, (70-85% lean) 86.50-105.00; high dressing 101.00-113.50; low dressing 74.00-95.50. Lean (85-90%) 80.00-94.00

BRED COWS: Scarce

COW & CALF PAIRS: Scarce

SOUTHEAST MISSOURI WEEKLY SUMMARY

(Jackson and Farmington)

Receipts: 1,621 Week ago: 1,430 Year ago: 1,864

Compared to last week, steers and heifers uneven from 12.00 lower to 10.00 higher. Slaughter cows 3.00 to 5.00 lower and slaughter bulls steady to 3.00 lower.

FEEDER STEERS:

Medium and Large 1

300-400 lbs.	245.00-292.50
400-500 lbs.	247.00-295.00
500-600 lbs.	235.00-269.00
600-700 lbs.	230.00-249.00
700-800 lbs.	216.00-228.00
17 hd 827 lbs.	218.00

FEEDER HEIFERS:

Medium and Large 1

300-400 lbs.	222.00-265.00
400-500 lbs.	217.00-240.00
500-600 lbs.	199.00-240.00
600-650 lbs.	208.00-229.00
700-750 lbs.	227.00-228.00

SLAUGHTER BULLS: Yield Grade 1-2 980-2140 lbs. 86.50-105.00; high dressing 105.50-120.00

SLAUGHTER COWS: Breaking and Boning (75-85% lean) 73.00-91.00; high dressing 90.00-97.00. Lean (85-90% lean) 65.00-77.00

BRED COWS: Medium and Large 2 2-8 yrs 995-1425 lbs 2nd to 3rd stage 1000.00-1310.00 per head

COW & CALF PAIRS: Medium and Large 2 >8 yrs 1125 lbs with 150-300 lb calves 1300.00 per pair

EAST CENTRAL MISSOURI WEEKLY SUMMARY

(Cuba, Vienna)

Receipts: 4,003 Week ago: 1,207 Year ago: 3,773

Compared to last week, feeders mostly 10.00 lower, spots 15.00 lower. Slaughter cows 3.00 to 5.00 lower.

FEEDER STEERS:

Medium and Large 1

400-500 lbs.	270.00-307.00
500-600 lbs.	261.00-293.00
600-700 lbs.	239.00-261.00
700-800 lbs.	230.00-240.50
12 hd 880 lbs.	222.00

FEEDER HEIFERS:

Medium and Large 1

400-500 lbs.	235.00-271.00
500-600 lbs.	225.00-242.00
600-700 lbs.	223.50-241.00
700-800 lbs.	200.00-216.00

SLAUGHTER BULLS: Yield Grade 1-2 1380-2225 lbs 109.00-119.00; high dressing 127.00-131.00; low dressing 95.00-107.00.

SLAUGHTER COWS: Breaking and Boning, (70-85% lean) 85.00-99.50; high dressing 98.00-107.00; low dressing 80.00-85.50. Lean (85-90%) 79.50-91.00

BRED COWS: Medium and Large 1-2 2-8 yrs 1065-1408 lbs 1st to 3rd stage 1275.00-1650.00 per head

COW & CALF PAIRS: Medium and Large 1 2-8 yrs 1250-1350 lbs rebred 1st to 2nd stage with >300 lb calves 2400.00-2900.00; >5 yrs 1100-1250 lbs with >300 lb calves 2125.00-2150.00 per pair

NORTHWEST MISSOURI WEEKLY SUMMARY

(Tina)

Receipts: 1,745 Week Ago: 422 Year Ago: 1,664

Compared to two weeks ago, feeder calves 2.00 to 5.00 higher, yearlings steady to firm. Slaughter cows and bulls mostly 2.00 to 4.00 lower.

FEEDER STEERS:

Medium and Large 1

Pkg 394 lbs.	319.25
400-500 lbs.	282.50-308.50
500-600 lbs.	273.00-298.00
600-700 lbs.	247.00-277.00
700-800 lbs.	240.00-255.00
800-850 lbs.	230.00-248.00

FEEDER HEIFERS:

Medium and Large 1

350-400 lbs.	277.00-284.00
400-500 lbs.	255.00-279.50
500-600 lbs.	233.00-264.00
600-700 lbs.	224.00-250.25
700-800 lbs.	224.00-238.00
Pkg 846 lbs.	213.00
16 hd 961 lbs.	215.50

SLAUGHTER BULLS: Yield Grade 1-2 1395-2295 lbs 112.00-117.00; few low dressing 87.50-105.00.

SLAUGHTER COWS: Breaking and Boning, (70-85% lean) 83.00-106.00; high dressing 106.00-114.00; low dressing 62.00-77.00. Lean (85-90%) 76.00-98.00.

BRED COWS: Scarce

COW & CALF PAIRS: Scarce

AFTERNOON NATIONAL SLAUGHTER CATTLE REVIEW

So far for Friday negotiated cash trading has been at a standstill in the Southern Plains. In Nebraska negotiated cash trading has been limited on light demand. In the Western Cornbelt negotiated cash trading has been mostly inactive on very light demand. Not enough purchases in any region for a market trend. The last reported market in all regions was on Thursday. In the Texas Panhandle live FOB purchases traded at 181.00. In Kansas live FOB purchases traded at 180.00. In Nebraska live FOB purchases traded at 181.50 and dressed delivered purchases traded at 287.00. In the Western Cornbelt live FOB purchases traded from 178.00-180.00 and dressed delivered purchases traded from 283.00-287.00.

Negotiated Cash Sales:

Confirmed:	2,631	Week Ago:	27,770	Year Ago:	2,998
Week to date:	47,311	Week Ago:	34,464	Year Ago:	99,410

<u>Live Basis</u>	<u>Steers</u>	<u>Heifers</u>
Over 80% Choice	-	174.00
65-80% Choice	-	-
35-65% Choice	-	-
0-35% Choice	-	-
Total All Grades	-	174.00
<u>Dressed Basis</u>		
Over 80% Choice	-	276.00
65-80% Choice	-	-
35-65% Choice	-	-
0-35% Choice	-	-
Total All Grades	-	276.00

<u>All Beef Type Steers/Heifers</u>	<u>Head</u>	<u>Avg Wt</u>	<u>Price Range</u>	<u>Wtd Avg</u>
Live FOB	1,175	1410.1	174.00-182.00	178.25
Live Del	281	1391.2	176.00-183.00	179.38
Dressed Del	1,175	928.4	276.00-287.00	277.52
Dressed FOB	-	-	-	-

WEEKLY COMMODITY FUTURES TRENDS

Compared to last week, Live Cattle 9.70 to 10.90 lower, Lean Hogs 0.10 to 0.80 higher, Feeder Cattle 10.88 to 13.85 lower.

Daily Futures Closes

	Mon.	Tues.	Wed.	Thu.	Fri.
Cattle					
Dec	181.32	178.77	179.40	174.35	174.17
Feb	181.97	178.42	179.47	174.47	174.65
Apr	184.60	180.60	181.62	176.95	176.92
Jun	179.67	175.70	176.60	172.02	172.02
Aug	179.77	176.02	177.00	172.87	172.62
Lean Hogs					
Dec	72.40	72.90	71.50	71.45	71.90
Feb	75.95	76.02	74.85	75.20	75.57
Apr	81.25	81.25	80.37	80.72	81.52
May	86.77	86.82	86.20	86.15	86.85
Jun	94.42	94.60	93.97	93.95	94.55
Fdr Cat					
Nov	237.17	232.22	234.55	229.00	229.72
Jan	236.42	230.82	232.77	224.92	226.42
Mar	239.10	233.25	235.00	227.25	228.62
Apr	242.85	237.10	238.67	230.80	232.32
May	246.25	240.37	241.95	234.35	235.77
Milk					
Nov	17.17	17.06	17.15	17.12	17.08
Dec	17.11	16.87	17.13	17.04	16.89
Jan	17.20	17.04	17.22	17.15	17.04

WEEKLY COMMODITY GRAIN FUTURES TRENDS

Compared to last week, Soybeans Nov 0.06 higher, others 0.04 to 0.10 lower, Wheat Dec and Mar steady to 0.03 higher, others 0.02 to 0.04 lower, Corn 0.12 to 0.13 lower, KC Wheat 0.03 to 0.06 lower, Soybean Meal Dec and Jan 2.70 to 7.30 higher, others 0.30 to 6.50 lower.

Daily Grain Futures Closes

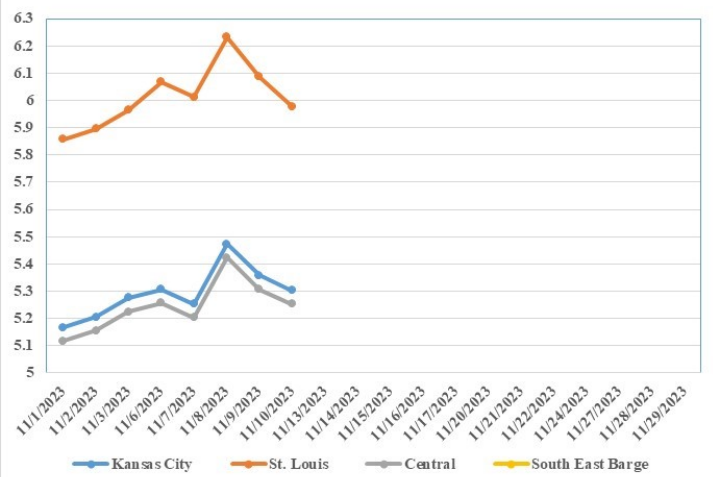
	Mon.	Tues.	Wed.	Thu.	Fri.
Soybeans					
Nov	1340 1/2	1348 3/4	1349	1327 3/4	1333 1/2
Jan	1364	1362	1365	1343 1/2	1347 1/2
Mar	1378 1/2	1374	3/41377	1357 1/2	1360 3/4
May	1391	1385	1387	1369 1/2	1371 1/2
Jul	1396 1/4	1389 1/4	1390	1373 1/2	1374
Wheat					
Dec	575 3/4	570 1/4	592 1/4	580 3/4	575 1/4
Mar	602 1/2	596	616 1/2	606 1/4	599 1/4
May	620	612 3/4	633	622	614 3/4
Jul	635 3/4	628	647 3/4	636 1/4	628 3/4
Sep	649 1/2	642 1/4	611 1/2	650 1/4	642 3/4
Corn					
Dec	477 1/4	468 1/2	476	468	464
Mar	492 1/4	483 1/2	490	482 3/4	479
May	502	493 1/4	499 1/4	491 1/2	488 1/2
Jul	510 1/4	502 1/2	507 3/4	500 1/2	497 3/4
Sep	512 3/4	505 1/4	509 3/4	503	500 1/4
KC Wheat					
Dec	645 3/4	632 1/2	655	647 1/4	640
Mar	656 3/4	643 1/2	664 1/2	658 1/4	650 3/4
May	664 3/4	651 1/2	671 1/4	665	657 1/4
Jul	671 1/2	659	678 1/4	672	663 3/4
Sep	681 1/2	669 1/4	688 1/2	682 1/4	673 3/4
SB Meal					
Dec	437.50	447.40	449.80	449.90	449.40
Jan	430.40	438.80	439.00	436.20	434.90
Mar	423.20	431.10	430.30	425.70	422.90
May	418.90	425.60	424.10	418.80	413.80
Jul	418.70	424.60	422.80	417.40	411.40

MONTHLY GRAIN CROP

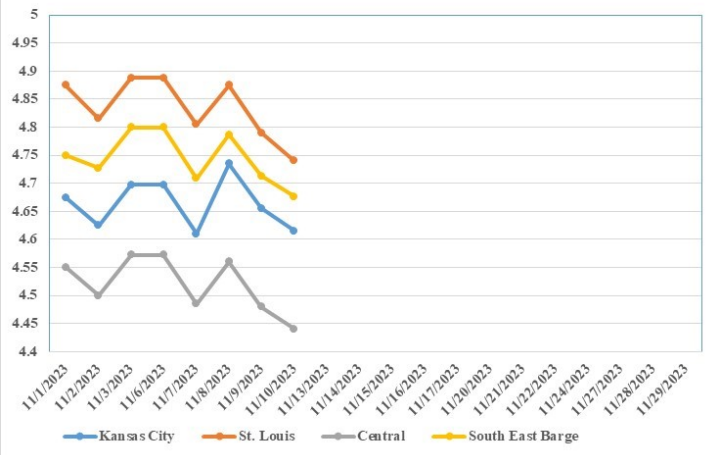
November 2023 Soybean Bids



November 2023 Wheat Bids



November 2023 Corn Bids



*Axis value ranges may be updated to reflect data points.

MISSOURI GRAIN WEEKLY TRENDS

Compared to last week, Soybeans 0.05 lower to 0.05 higher, Wheat 0.13 lower to 0.15 higher, Corn 0.03 to 0.18 lower, Sorghum 0.13 lower.

Area	#1 Soybeans	#2 Soft Wheat	#2 Corn	#2 Grain Sorghum
Kansas City				
Friday**	13.32-13.72	5.28	4.62-4.77	5.12
Monday	13.44-13.84	5.31	4.62-4.77	5.12
Tuesday	13.42-13.82	5.25	4.54-4.69	5.04
Wednesday	13.46-13.96	5.47	4.61-4.86	5.11
Thursday	13.24-13.74	5.36	4.53-4.78	5.03
Friday	13.28-13.68	5.30	4.49-4.74	4.99
St. Louis				
Friday**	13.55-13.57	5.81-6.13	4.87-4.90	5.52
Monday	13.67-13.69	5.96-6.18	4.87-4.90	5.52
Tuesday	13.66-13.78	5.90-6.12	4.79-4.83	5.44
Wednesday	13.82-13.90	6.12-6.34	4.86-4.89	5.51
Thursday	13.54-13.59	6.01-6.17	4.77-4.81	5.43
Friday	13.52-13.60	5.95-6.00	4.72-4.76	5.39
Central				
Friday**	12.87-12.92	5.23	4.57	—
Monday	13.04-13.14	5.26	4.57	—
Tuesday	13.07-13.22	5.20	4.49	—
Wednesday	13.16-13.26	5.42	4.56	—
Thursday	12.99-13.09	5.31	4.48	—
Friday	13.03-13.13	5.25	4.44	—
S.E. MO				
Friday**	13.42-13.52	—	4.75-4.82	—
Monday	13.55-13.64	—	4.75-4.82	—
Tuesday	13.53-13.62	—	4.66-4.74	—
Wednesday	13.59-13.66	—	4.74-4.81	—
Thursday	13.28-13.44	—	4.68-4.73	—
Friday	13.32-13.48	—	4.65-4.69	—

(PRICES PER BUSHEL) *NEW CROP **PREVIOUS WEEK'S PRICES
*Bids calculated using Kansas City, St. Louis, and St. Joseph bids

**WHOLESALE FEEDSTUFFS PRICES
(DOLLARS PER TON-BULK BASIS)**

Area	Soybean Hulls Pellets	Soybean Meal 46.5-48%	Corn Gluten Pellets 21%	Wheat Middlings
Kansas City	165.00	469.90	255.00	166.67
St. Louis	n/a	n/a	255.00	155.00

CROP PRODUCTION

Corn production for grain is forecast at a record high 15.2 billion bushels, up 1 percent from the previous forecast and up 11 percent from 2022. Based on conditions as of November 1, yields are expected to average 174.9 bushels per harvested acre, up 1.9 bushels from the previous forecast and up 1.5 bushels from last year. Area harvested for grain, forecast at 87.1 million acres, is unchanged from the previous forecast but up 10 percent from the last year. **Soybean production** for beans is forecast at 4.13 billion bushels, up 1 percent from the previous forecast but down 3 percent from last year. Based on conditions as of November 1, yields are expected to average 49.9 bushels per acre, up 0.3 bushel from both the previous forecast and 2022. Area harvested for beans in the United States is forecast at 82.8 million acres, unchanged from the previous forecast but down 4 percent from 2022. **All cotton production** is forecast at 13.1 million 480-pound bales, up 2 percent from the previous forecast but down 10 percent from 2022. Based on conditions as of November 1, yields are expected to average 783 pounds per harvested acre, up 16 pounds from the previous forecast but down 167 pounds from 2022. Upland cotton production is forecast at 12.7 million 480-pound bales, up 2 percent from the previous forecast but down 9 percent from 2022. Pima cotton production is forecast at 354,000 bales, down 1 percent from the previous forecast and down 25 percent from 2022. All cotton area harvested is forecast at 8.02 million acres, unchanged from the previous forecast but up 10 percent from 2022.

WASDE

OILSEEDS: The U.S. soybean outlook for 2023/24 includes increased production and ending stocks. Soybean production is forecast at 4.13 billion bushels, up 25 million on higher yields. The largest production changes are for Wisconsin, Tennessee, North Dakota, South Dakota, and Ohio. With crush and exports unchanged, soybean ending stocks are raised to 245 million bushels. The U.S. season-average soybean price for 2023/24 is forecast at \$12.90 per bushel, unchanged from last month. The soybean oil price is reduced 2.0 cents to 61.0 cents per pound. The soybean meal price is unchanged at \$380.00 per short ton.

COARSE GRAINS: This month's 2023/24 U.S. corn outlook is for larger production, domestic use, exports, and ending stocks. Corn production is forecast at 15.2 billion bushels, up 170 million from last month on a 1.9-bushel increase in yield to 174.9 bushels per acre. With larger supplies, feed and residual use is raised 50 million bushels to 5.7 billion and corn used for ethanol is raised 25 million bushels to 5.3 billion. Exports are raised 50 million bushels to 2.1 billion. With supply rising more than use, corn ending stocks are up 45 million bushels to 2.2 billion. The season-average corn price received by producers is lowered 10 cents to \$4.85 per bushel.

WHEAT: The outlook for 2023/24 U.S. wheat this month is for larger supplies, decreased domestic use, unchanged exports, and higher ending stocks. Supplies are raised on increased imports, up 10 million bushels to 145 million, on a strong pace to date and expectations for the rest of the marketing year. Total domestic use is projected 4 million bushels lower to 1,155 million, all on a reduction in food use following the release of the latest NASS Flour Milling Products report. July-September wheat used in milling is the smallest for this quarter since at least 2014 when NASS began reporting this series. With no other changes to the U.S. balance sheet, projected ending stocks are raised 14 million bushels to 684 million. The projected 2023/24 season-average farm price is lowered \$0.10 per bushel to \$7.20 on lower expected prices for the remainder of the marketing year.

MISSOURI CROP PROGRESS AND CONDITION

	Week Ending			2018-2022 Average
	11/05/23	10/29/23	11/05/22	
Corn harvested	89	84	89	86
Soybeans harvested	84	75	84	69
Cotton harvested	84	79	89	73
Winter wheat planted	78	66	81	70
Winter wheat emerged	55	36	54	48

MISSOURI WEEKLY HAY SUMMARY 11/09/23

Following a hard freeze last week temperatures have been well above normal this week. This has kept a few folks out in the fields and still baling hay. The warm weather and sun combined with a lack of frost or dew has actually made for some pretty good hay curing weather as far as late season hay making goes. Grain harvest is in the final stretches for those who aren't already done this is well ahead of average pace. Hay movement is good, prices are steady, the supply of hay is light to moderate and demand is moderate.

- Alfalfa - Supreme 250.00-300.00, small square 10.00-15.00 per bale
- Alfalfa - Premium 200.00-250.00
- Alfalfa - Good 150.00-200.00, small square 5.00-10.00 per bale
- Alfalfa - Fair 125.00-150.00
- Alfalfa/grass mix - Good/Premium small square 5.00-10.00 per bale
- Mixed grass - Good/Premium 150.00-225.00
- Mixed grass - Fair/Good 100.00-175.00, small square 5.00-8.00 per bale
- Mixed grass - Fair 50.00-100.00 per large round bale
- Wheat straw - 4.00-7.00 per small square bale

Please Note: The above volumes (tonnage, acres, and bales) listed are for confirmed trades only, it does not include estimated volume (tonnage) for bids or offers to the trade. List your hay for sale at: [Hay Listing Online Form](#). Explanation of Hay Quality Guidelines: [Hay Quality Designation Guidelines](#). Glossary of Terms: [Livestock, Poultry, & Grain Hay Terms](#)

MISSOURI WEEKLY SHEEP/GOAT AUCTION SUMMARY

Receipts: 2,363 Week Ago: 1,134 Last Year: 350
SHEEP: Feeder lambs Small and Medium 1-2 hair 18 hd 25 lbs 220.00; 30-40 lbs 280.00-325.00, thin 240.00-255.00; 40-50 lbs 235.00-285.00, thin 200.00.
 Slaughter lambs Choice and Prime 1-3 w/s pkg 122 lbs 105.00. Choice and Prime 1-3 hair 45-60 lbs 235.00-287.50; 60-70 lbs 225.00-265.00; 70-90 lbs 200.00-235.00; 100-140 lbs 145.00-185.00. Choice 1-3 hair 60-70 lbs 230.00-242.50; pkg 73 lbs 220.00; pkg 123 lbs 140.00.
 Slaughter ewes Utility and Good 1-2 125-180 lbs 76.00-82.00. Utility and Good 1-3 21 hd 201 lbs 85.00. Utility 1-2 130-150 lbs 61.00-70.00. Good 2-3 hair pkg 125 lbs 130.00. Utility and Good 1-3 110-165 lbs 70.00-80.00. Cull and Utility 1-2 pkg 135 lbs 45.00. Slaughter bucks 1-2 250 lbs 95.00. Bucks 1-2 hair pkg 155 lbs 85.00.
 Replacement ewes Medium 1-2 hair 1-2 yrs 95-120 lbs exp 105.00-119.00; 2-4 yrs 95-105 lbs exp 125.00-137.50; 4-6 yrs 100-130 lbs exp 86.00-91.00. Small and Medium 1-2 hair 1-2 yrs 95 lbs fall 150.00/hd; 2-4 yrs 125-130 lbs exp 190.00-280.00/hd; 120-160 lbs fall 200.00-260.00/hd; 4-6 yrs 120 lbs fall 125.00/hd. Families Small and Medium 1-2 2-4 yrs 110-125 lbs exp with <20 lb lambs 170.00-420.00/fam.
GOATS: Feeder kids Selection 1 30-40 lbs 265.00-295.00. Selection 2 25-35 lbs 230.00-235.00, pygmies 200.00; 40-50 lbs 215.00-250.00, pygmies 230.00. Selection 3 pkg 35 lbs pygmies 171.00.
 Slaughter kids Selection 1 50-70 lbs 275.00-325.00. Selection 1-2 40-65 lbs 230.00-260.00. Selection 2 40-85 lbs 200.00-250.00. Selection 3 40-85 lbs 180.00-185.00.
 Slaughter nannies/does Selection 1-2 11 hd 63 lbs pygmies 80.00; pkg 70 lbs 84.00; 80-95 lbs 90.00-110.00; 100-160 lbs 85.00-122.50.
 Slaughter bucks/billies Selection 1-2 60-80 lbs pygmies 95.00-97.50; 110-130 lbs 160.00-190.00.
 Slaughter wethers Selection 1-2 70-80 lbs 220.00-225.00; 90-100 lbs 240.00-245.00. Wether kids Selection 1 pkg 67 lbs 265.00.
 Replacement nannies/does Selection 1-2 <1 yrs 135 lbs exp 300.00/hd; 1-2 yrs pkg 130 lbs exp 160.00/hd; 2-4 yrs 95-110 lbs exp 150.00-370.00/hd.

Explanatory Notes: Stage - Represents estimated lambing/kidding period (Open, Exp=exposed, Bred, Fall = Sep-Nov, Win = Dec-Feb, Spr = Mar-May, Sum=Jun-Aug; w/s = woolled and shorn; /hd= per head; /fam=per family
 All price CWT unless otherwise noted.

MISSOURI DROUGHT MONITOR

Date	None	D0	D1	D2	D3	D4
11/07/23	24.98	23.11	34.16	16.84	0.91	0
10/31/23	25.05	24.96	33.30	14.89	1.80	0
11/08/22	13.41	35.75	28.94	19.16	2.74	0

Reflects percentage of Missouri impacted by drought. D0 Abnormally Dry; D1 Moderate Drought; D2 Severe Drought; D3 Extreme Drought; D4 Exceptional Drought

NATIONAL DIRECT DELIVERED FEEDER PIG REPORT

11/10/23 Receipts: 119,637 Week ago: 113,593 Year Ago: 82,386
 Early weaned pigs steady. Feeder pigs 1.00 per head higher.
 Early weaned pigs 10-12 lbs. basis: Cash 75,109 head 15.00-34.00, weighted average 25.48
 Formula 17,775 head 26.69-50.33, weighted average 37.17
 Feeder pigs 40 pounds basis: Cash 26,753 head 28.00-45.00, weighted average 38.27

NATIONAL DAILY DIRECT PRIOR DAY HOG REPORTS FOR 11/10/23

BARROWS AND GILTS (Carcass Basis): 2,093 head
 Base Carcass Price 62.00-71.00, weighted average 67.40

SOWS (Live Basis): 6,269 head
 300-500 lbs. 26.00-72.00
 Over 500 lbs. 47.03-71.00

MISSOURI WEEKLY DIRECT SLAUGHTER CATTLE REPORT 11/10/23

Weekly Receipts: 520 Week ago: 120 Year ago: 320
 Trading as of Friday morning, trade is light to moderate. Flat dressed sales 5.00 lower with grid dressed sales inactive. Live sales 5.00 lower.

LIVE STEERS & HEIFERS: 3 loads 180.00 FOB
DRESSED STEERS & HEIFERS: 10 loads Wed morn 287.00 flat

GRADE AND WEIGHT (Grid): No sales reported

Click here for the current [National Crop Progress](#)
 Click here for the current [Missouri Crop Progress](#)
 The current hay directory can be found at: [Hay Directory](#).