

# Weekly Market Summary

Published by:  
**Missouri Department of Agriculture**  
**Ag Business Development Division**  
**Market News Program**



Chris Chinn, Director  
 Jill Wood, Division Director  
 Tony Hancock, Editor  
<http://www.ams.usda.gov/marketnews.htm>  
[agmarketnews.mo.gov](http://www.ams.usda.gov/marketnews.htm)

Michael L. Parson, Governor

Volume XLIII, Number 48 ♦ P.O. Box 630, Jefferson City, MO 65102 ♦ (573) 751-4211 ♦ Mon, Dec 4, 2023

## MISSOURI WEEKLY FEEDER CATTLE WEIGHTED AVERAGE REPORT

Receipts: 31,796 Week ago: 21,488 Year ago: 49,343  
 Steers and Heifers Medium and Large 1—Weighted average weights and prices

### STEERS: Medium and Large 1

272 lbs. 263.09 471 lbs. 281.18 676 lbs. 235.79 884 lbs. 215.02  
 325 lbs. 300.01 521 lbs. 270.37 721 lbs. 230.26 921 lbs. 211.06  
 384 lbs. 302.04 575 lbs. 255.69 775 lbs. 230.96  
 430 lbs. 289.86 621 lbs. 241.09 817 lbs. 222.85

### HEIFERS: Medium and Large 1

323 lbs. 260.75 524 lbs. 227.60 725 lbs. 216.17 913 lbs. 183.89  
 369 lbs. 255.39 570 lbs. 223.68 775 lbs. 206.80 1139 lbs. 158.00  
 427 lbs. 244.21 621 lbs. 222.05 826 lbs. 195.52  
 472 lbs. 240.49 668 lbs. 217.47 870 lbs. 183.68

## MISSOURI STEER (HEIFER) STOCKER FORMULA 12/04/2023

Monday's Missouri Stocker formula consists of 5011 (5341) head with a weighted average weight of 545.18 (536.27) lbs. and a price value of 251.01 (220.78), 12.39 lower (13.31 lower) than last week.

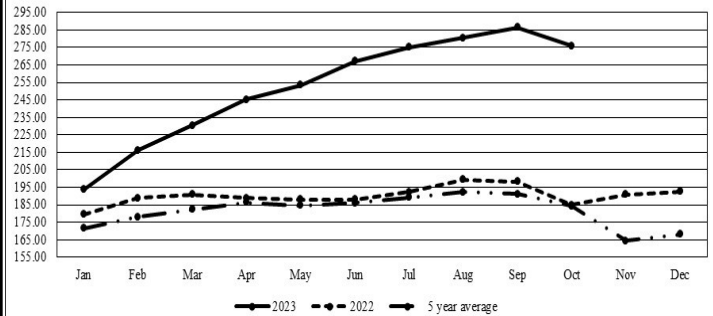
This a rolling seven day calculated weighted value which combines all Feeder Steers reported by MDA/USDA Market News Service weighing from 400-649 lbs. in the Medium and Large 1 and Medium and Large 1-2 frame and muscle classifications, including all comment cattle except Brahman X. Heifer values are in parentheses.

## MISSOURI WEEKLY CATTLE AUCTION SUMMARY

Compared to last test which was two weeks ago in most locations, markets were extremely volatile and uneven, however most sales were 5.00 to 15.00 lower. The supply of feeders was moderate. Extremely volatile futures markets continue to cause confusion to buyers and sellers at the auction barns as big daily swings for no fundamental reasons leaves everyone scratching their heads. In the last two weeks the Dec. Live Cattle contract has lost near 6.50 dollars and Jan. Feeder Cattle has lost near 15.00 dollars. Moisture in wheat country has helped to provide a spark to the lighter weight calf market. However buyers are only interested in those calves that are weaned with shots which can be turned out immediately. The first snow of the year fell over the holiday weekend across much of the northern half of the state and much of the southern half managed to get around an inch of rain. The moisture is very welcome although the growing season is over and what little grass that was stockpiled is disappearing fast. Several reports of folks already feeding hay which in the southern part of the state often doesn't start till around Christmas rather than Thanksgiving. Some of the better load lots of 8 wt. steers this week topped out at 228.85 which was 18.00 lower than the top last week however quality was also a factor in play when compared to the special sales last week. Some load lots of 7 wt. heifers topped at 225.25 which was 13.00 lower than the top from some of last week's special sales. Several heavy 8 wt. and especially into the 9 wt. steers are now seeing a 1 rather than a 2 at the start of the price now. Still a few small packages of 4 or 5 wt. steers that may number 10 or 15 head which manage to find the 3.00 market but that has by far become an exception and those calves have to have all the bells and whistles as the average for 5 wt. steers has fallen into the mid 2's now. Boxed beef cutouts were lower for the week. On Friday choice closed at 297.46, down 0.57 and select closed at 265.49, down 3.27 compared to last week. Negotiated feedlot sales as of the Friday afternoon came in 66K head. Live sales were reported from 173.00-175.00 and dressed sales at 275.00. Missouri Stocker formula consists of 5011 head with a weighted average weight of 545.18 lbs. and a price value of 251.01, 12.39 lower than a week ago. The steer/heifer spread is 30.23.

The Weekly Market Summary, as well as historical summaries, are available on our website <https://agmarketnews.mo.gov/summaries>  
 Market News Hotline: 1-573-522-9244

Missouri Stocker Formula - Steers

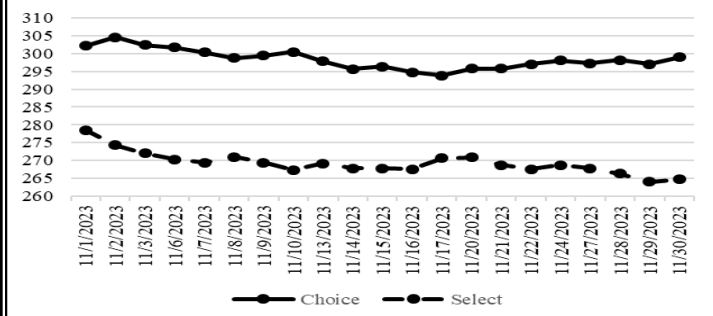


\*Graph is updated the first Monday of each month. Axis value ranges may be updated to reflect data points.

## NATIONAL BOXED BEEF CUTOUT/BOXED BEEF CUTS

<u>DATE</u>	<u>CHOICE</u>	<u>SELECT</u>	<u>TOTAL LOADS</u>
11/27	297.25	267.80	106
11/28	298.17	266.35	164
11/29	297.03	264.09	137
11/30	299.02	264.75	181
12/1	297.46	265.49	159
<b>5 Day Simple Average</b>	297.79	265.70	

Boxed Beef Cuts November 2023



\*Axis value ranges may be updated to reflect data points.

## WEEKLY LIVESTOCK SLAUGHTER 12/02/23

	<u>CATTLE</u>	<u>HOGS</u>	<u>SHEEP</u>
Week to Date:	635,000	2,704,000	42,000
Last Week:	538,000	2,225,000	26,000
Last Year:	660,000	2,583,000	35,000

**SOUTHWEST MISSOURI WEEKLY SUMMARY**

(Joplin and Springfield)

Receipts: 11,761 Week ago: 12,000 Year Ago: 20,051

Compared to last week, feeders early week 8.00 to 17.00 lower, late week unevenly steady. Slaughter cows and bulls 2.00 to 6.00 higher.

**FEEDER STEERS:**  
Medium and Large 1

Table with 2 columns: Weight (300-400 lbs to 900-950 lbs) and Price Range (293.00-322.00 to 203.00-214.00)

**FEEDER HEIFERS:**  
Medium and Large 1

Table with 2 columns: Weight (300-400 lbs to 39 hd 914 lbs) and Price Range (248.00-282.00 to 185.00)

**FEEDER HOLSTEIN STEERS**  
Large 3

Scarce Scarce

**SLAUGHTER COWS:** Breaking and Boning (70-85% Lean) 81.00-102.00, high dressing 95.00-113.00; low dressing 82.00-91.50. Lean (85-90%) 75.00-92.00

**SLAUGHTER BULLS:** Yield Grade 1-2 1205-2260 lbs. 105.00-119.00; high dressing 117.00-132.00; low dressing 93.00-105.00

**BRED COWS:** Medium and Large 1 2-8 yrs 1240 lbs 2nd/3rd stage 1900.00. Medium and Large 1-2 2-8 yrs 940-1290 lbs 2nd/3rd stage 1200.00-1675.00; >8 yrs 1060-1322 lbs 2nd/3rd stage 1150.00-1300.00 per head

**COW & CALF PAIRS:** Medium and Large 1-2 2-8 yrs 1695 lbs with >300 lb calves 1800.00 per pair

**BRED HEIFERS:** Medium and Large 1 2-4 yrs 1145-1198 lbs 2nd/3rd stage 1575.00-1700.00. Medium and Large 1-2 <2 yrs 920-1050 lbs 2nd/3rd stage 1150.00-1400.00 per head

**SOUTH CENTRAL MISSOURI WEEKLY SUMMARY**

(West Plains, Phillipsburg)

Receipts: 9,408 Week ago: 1,510 Year Ago: 10,630

Compared to last week, early week feeders uneven from 4.00 lower to 4.00 higher, late week special 2.00 to 5.00 higher, spots 10.00 higher. Slaughter cows and bulls 2.00 to 4.00 higher.

**FEEDER STEERS:**  
Medium and Large 1

Table with 2 columns: Weight (300-400 lbs to 800-900 lbs) and Price Range (285.00-319.50 to 208.00-225.25)

**FEEDER HEIFERS:**  
Medium and Large 1

Table with 2 columns: Weight (400-500 lbs to 820 lbs) and Price Range (222.50-277.00 to 180.00-187.00)

**FEEDER HOLSTEIN STEERS**  
Large 3

Scarce Scarce

**SLAUGHTER COWS:** Breaking and Boning (70-85% lean) 85.00-97.00, high dressing 97.00-110.00; low dressing 71.00-88.00. Lean (85-90%) 78.00-89.00

**SLAUGHTER BULLS:** Yield Grade 1-2 1115-2405 lbs. 104.00-117.50; high dressing 118.00-128.00; low dressing 80.00-102.50

**BRED COWS:** Medium and Large 1-2 2-8 yrs 1125-1275 lbs 2nd/3rd stage 1250.00-1500.00.

**COW & CALF PAIRS:** Medium and Large 1-2 2-8 yrs 1222 lbs with 150-300 lb calves 2025.00 per pair

**BRED HEIFERS:** Scarce

**WEST CENTRAL MISSOURI WEEKLY SUMMARY**

(Kingsville, Windsor, Butler)

Receipts: 5,505 Week ago: 911 Year ago: 8,622

Compared to last week, feeder calves under 550 lbs uneven from 5.00 lower to 5.00 higher, over 550 lbs steady to 5.00 lower, spots 10.00 lower. Slaughter cows steady to 4.00 higher.

**FEEDER STEERS:**  
Medium and Large 1

Table with 2 columns: Weight (350-400 lbs to 56 hd 915 lbs) and Price Range (288.00-329.00 to 223.85)

**FEEDER HEIFERS:**  
Medium and Large 1

Table with 2 columns: Weight (300-400 lbs to Pkg 912 lbs) and Price Range (231.00-276.00 to 181.00)

**SLAUGHTER BULLS:** Yield Grade 1-2 1285-2525 lbs 104.00-122.00; high dressing 119.00-134.00, low dressing 93.00-106.00

**SLAUGHTER COWS:** Breaking and Boning (70-85% lean) 82.00-105.00, high dressing 94.00-108.00; low dressing 70.00-89.00. Lean (85-90%) 72.00-85.00

**BRED COWS:** Medium and Large 1-2 2-4 yrs 1085-1580 lbs 2nd/3rd stage 1675.00-1750.00 per head

**COW & CALF PAIRS:** Medium and Large 1-2 5-8 yrs 985-1350 lbs with 150-300 lb calves 1775.00 -1925.00 per head

**NORTHEAST MISSOURI WEEKLY SUMMARY**

(Bowling Green, Kingdom City, Palmyra)

Receipts: 3,331 Week ago: 3,540 Year ago: 7,612

Compared to last week, steers under 600 lbs and heifers under 750 lbs mostly 10.00 to 20.00 lower, steers 6500-750 lbs steady to 7.00 lower. Slaughter cows early week steady to 3.00 higher, late week 3.00 to 7.00 lower.

**FEEDER STEERS:**  
Medium and Large 1

Table with 2 columns: Weight (400-500 lbs to 700-800 lbs) and Price Range (260.00-298.00 to 207.25-227.00)

**FEEDER HEIFERS:**  
Medium and Large 1

Table with 2 columns: Weight (450-500 lbs to 15 hd 712 lbs) and Price Range (238.00-250.00 to 215.00)

**SLAUGHTER BULLS:** Yield Grade 1-2 1480-2275 lbs 114.50-123.00; low dressing 100.00-111.50

**SLAUGHTER COWS:** Breaking and Boning, (70-85% lean) 87.50-102.50; high dressing 96.00-121.00; low dressing 80.00-92.00. Lean (85-90%) 81.50-89.00

**SLAUGHTER STEERS:** Choice 2 -3 170.50-175.00. Select and Choice 1-3 158.00-169.00

**SLAUGHTER HEIFERS:** Choice 2-3 170.00-175.50. Select 1-3 162.00-163.00

**BRED COWS:** Scarce

**COW/CALF PAIRS:** Scarce

**NORTH CENTRAL MISSOURI WEEKLY SUMMARY**

(Macon, Unionville, Green City, New Cambria)

Receipts: 3,275 Week ago: 6,249 Year ago: 5,510

Compared to two weeks ago, steers steady to firm, spots 10.00 higher, except 700-750 lbs mostly 7.00 lower. Heifers steady to 5.00 lower. Slaughter cows firm to 5.00 higher.

\*Some sale barns on a bi-weekly schedule and may not have a sale each week.

**FEEDER STEERS:**  
Medium and Large 1

Table with 2 columns: Weight (400-500 lbs to 21 hd 907 lbs) and Price Range (275.00-315.00 to 221.75)

**FEEDER HEIFERS:**  
Medium and Large 1

Table with 2 columns: Weight (18 hd 473 lbs to 700-800 lbs) and Price Range (242.25 to 208.25-225.25)

**SLAUGHTER BULLS:** Yield Grade 1-2 1350-2185 lbs 113.00-129.00; low dressing 106.00-107.00

**SLAUGHTER COWS:** Breaking and Boning, (70-85% lean) 87.00-108.00; high dressing 100.00-116.00; low dressing 80.00-92.00. Lean (85-90%) 82.00-92.00

**BRED COWS:** Medium and Large 1 2-4 yrs 1200-1320 lbs 2nd stage 2250.00-2375.00, fancy 3100.00-3300.00 per head

**COW & CALF PAIRS:** Medium and Large 2 2-8 yrs 1275-1350 lbs with <150 to 300 lb calves 2000.00 -2050.00 per pair

**SOUTHEAST MISSOURI WEEKLY SUMMARY**

(Jackson and Farmington)

Receipts: 1,691 Two Weeks ago: 1,186 Year ago: 2,667  
 Compared to last week, steers and heifers uneven from 1.00 lower to 5.00 higher. Slaughter cows and bulls steady to 2.00 lower.

**FEEDER STEERS:**

Medium and Large 1

300-400 lbs.	247.50-290.00
400-500 lbs.	240.00-270.00
500-600 lbs.	230.00-268.00
600-700 lbs.	210.00-250.00
700-800 lbs.	200.00-220.00
950-1000 lbs.	165.00-185.00

**FEEDER HEIFERS:**

Medium and Large 1

300-400 lbs.	227.00-260.00
400-500 lbs.	214.00-240.00
500-600 lbs.	212.00-225.00
600-700 lbs.	190.00-214.00
700-800 lbs.	182.00-204.00
900-950 lbs.	170.00-186.00

**SLAUGHTER BULLS:** Yield Grade 1-2 1325-2265 lbs. 89.00-109.00; high dressing 110.00-117.00

**SLAUGHTER COWS:** Breaking and Boning (75-85% lean) 75.00-88.00; high dressing 88.00-104.00. Lean (85-90% lean) 59.00-79.00

**BRED COWS:** Medium and Large 2 2-8 yrs 1005-1550 lbs 1st to 3rd stage 900.00-1300.00 per head

**COW & CALF PAIRS:** Scarce

**EAST CENTRAL MISSOURI WEEKLY SUMMARY**

(Cuba, Vienna)

Receipts: 2,730 Two Weeks ago: 2,562 Year ago: 3,814  
 Compared to last week, steers steady to 12.00 lower, except several under 550 lbs steady to 3.00 higher. Heifers steady to 8.00 lower. Slaughter cows steady to 3.00 higher.

**FEEDER STEERS:**

Medium and Large 1

400-500 lbs.	239.00-319.00
500-600 lbs.	233.00-297.00
600-700 lbs.	219.00-255.00
700-800 lbs.	212.00-233.50
800-900 lbs.	205.50-227.50

**FEEDER HEIFERS:**

Medium and Large 1

400-500 lbs.	231.00-275.00
500-600 lbs.	215.00-249.00
600-700 lbs.	210.25-229.00
700-800 lbs.	187.50-209.50
800-900 lbs.	182.50-196.50

**SLAUGHTER BULLS:** Yield Grade 1-2 1280-2160 lbs 98.00-124.00; high dressing 112.50-127.00; low dressing 92.00-108.00

**SLAUGHTER COWS:** Breaking and Boning, (70-85% lean) 86.50-95.50; high dressing 95.50-107.00; low dressing 77.50-87.00. Lean (85-90%) 80.00-88.00

**BRED COWS:** Medium and Large 1-2 2-8 yrs 1080-1315 lbs 2nd stage 1350.00-1625.00 per head

**COW & CALF PAIRS:** Scarce

**NORTHWEST MISSOURI WEEKLY SUMMARY**

(Tina) (w/e 11/25/23)

Receipts: 2,653 Week Ago: 714 Year Ago: 1,960  
 Compared to last week, steers and heifers sold 5.00 to 10.00 higher, with some spots sharply higher, with unweaned, less attractive calves sold steady to firm.

**FEEDER STEERS:**

Medium and Large 1

400-500 lbs.	275.00-301.00
500-600 lbs.	254.00-275.00
600-700 lbs.	245.50-256.00
750-800 lbs.	230.00-231.50
67 hd 811 lbs.	228.25

**FEEDER HEIFERS:**

Medium and Large 1

450-500 lbs.	237.50-256.00
500-600 lbs.	222.00-249.00
600-700 lbs.	217.00-244.75
700-800 lbs.	225.75-228.25

**SLAUGHTER BULLS:** Yield Grade 1-2 1470-2350 lbs 115.00-119.00

**SLAUGHTER COWS:** Breaking and Boning, (70-85% lean) 77.00-100.00; high dressing 102.00-110.00; low dressing 70.00-77.00. Lean (85-90%) 78.00-94.00

**BRED COWS:** Medium and Large 1 2-8 yrs 1158-1533 lbs 2nd/3rd stage 1700.00-2350.00; >5 yrs 1550 lbs 2nd/3rd stage 1550.00. Medium and Large 1-2 2-8 yrs 1035-1564 lbs 2nd/3rd stage 1300.00-1850.00, 1st stage 1275.00-1310.00 per head

**COW & CALF PAIRS:** Medium and Large 1 5-8 yrs 1475-1700 lbs with 150-300 lb calves 2950.00-3000.00. Medium and Large 1-2 2-8 yrs 1025-1700 lbs with <150 to >300 lb calves 2200.00-2950.00 per pair

**AFTERNOON NATIONAL SLAUGHTER CATTLE REVIEW**

Thus far for Friday in the Texas Panhandle negotiated cash trade has been at a standstill. The most recent live FOB purchases were Monday at 175.00. In Kansas negotiated cash trade has been mostly inactive on light demand. The most recent market was Tuesday with live FOB purchases at 174.00. In Nebraska negotiated cash trade has been slow on light demand. The most recent market in Nebraska was Thursday with live FOB purchases from 174.00-175.00 and dressed delivered purchases at 275.00. In the Western Corbellet negotiated cash trade has been slow on light demand. The most recent live FOB purchases were on Thursday from 174.00-175.00 and dressed delivered at 275.00.

**Negotiated Cash Sales:**

<b>Confirmed:</b>	4,821	<b>Week Ago:</b>	10,822	<b>Year Ago:</b>	8,418
<b>Week to date:</b>	66,554	<b>Week Ago:</b>	46,804	<b>Year Ago:</b>	64,289

<u>Live Basis</u>	<u>Steers</u>	<u>Heifers</u>
<b>Over 80% Choice</b>	173.00-175.00 avg 173.75	173.00-175.00 avg 173.84
<b>65-80% Choice</b>	-	-
<b>35-65% Choice</b>	-	-
<b>0-35% Choice</b>	-	-
<b>Total All Grades</b>	173.00-175.00 avg 173.75	173.00-175.00 avg 173.84
<u>Dressed Basis</u>		
<b>Over 80% Choice</b>	272.00-273.00 avg 272.73	-
<b>65-80% Choice</b>	273.00-273.00 avg 273.00	-
<b>35-65% Choice</b>	-	-
<b>0-35% Choice</b>	-	-
<b>Total All Grades</b>	272.00-273.00 avg 272.86	-

<u>All Beef Type Steers/Heifers</u>	<u>Head</u>	<u>Avg Wt</u>	<u>Price Range</u>	<u>Wtd Avg</u>
Live FOB	3970	1507.0	173.00-175.00	173.77
Live Del	52	1453.8	175.00-177.00	176.38
Dressed Del	765	940.6	272.00-275.00	273.45
Dressed FOB	-	-	-	-

**WEEKLY COMMODITY FUTURES TRENDS**

Compared to last week, Live Cattle 0.98 to 1.98 lower, Lean Hogs 1.10 to 1.75 higher, Feeder Cattle 4.90 to 5.57 lower.

**Daily Futures Closes**

	Mon.	Tues.	Wed.	Thu.	Fri.
<b>Cattle</b>					
Dec	168.77	171.65	171.90	170.87	169.27
Feb	168.82	172.82	173.47	171.82	169.12
Apr	170.67	174.87	175.92	174.42	171.62
Jun	166.67	170.67	171.55	170.20	167.55
Aug	167.27	170.77	171.47	170.40	168.07
<b>Lean Hogs</b>					
Dec	67.87	68.92	68.97	68.77	68.60
Feb	66.92	69.02	70.10	71.47	70.10
Apr	73.62	75.00	76.47	77.35	76.37
May	81.15	82.07	83.67	84.27	83.77
Jun	89.87	90.52	92.15	92.50	92.22
<b>Fdr Cat</b>					
Jan	212.80	221.05	222.20	219.95	214.42
Mar	216.30	223.50	224.27	222.57	217.22
Apr	220.22	227.42	228.32	226.67	221.17
May	223.87	231.20	232.12	230.50	224.90
Aug	238.00	245.22	246.05	244.20	238.97
<b>Milk</b>					
Nov	17.15	17.13	17.15	—	—
Dec	16.36	16.22	16.11	16.10	16.12
Jan	16.35	16.33	16.22	16.19	16.31

**WEEKLY COMMODITY GRAIN FUTURES TRENDS**

Compared to last week, Soybeans nearby 0.01 to 0.05 lower distant 0.00 to 0.02 higher, Wheat 0.24 to 0.26 higher, Corn 0.02 to 0.03 higher, KC Wheat 0.31 to 0.43 higher, Soybean Meal 8.80 to 31.10 lower.

**Daily Grain Futures Closes**

	Mon.	Tues.	Wed.	Thu.	Fri.
<b>Soybeans</b>					
Jan	1329 3/4	1346 1/2	1347	1342 3/4	1325
Mar	1348 1/4	1364 3/4	1365 1/2	1362 1/4	1345 1/2
May	1361 3/4	1378 1/4	1378 3/4	1375 1/4	1360 1/2
Jul	1367 1/2	1383 3/4	1383 3/4	1380 3/4	1367
Aug	1345	1360	1360 1/4	1358 1/4	1345 1/2
<b>Wheat</b>					
Dec	534 1/4	543 3/4	556	570 1/4	577
Mar	561	572	585 3/4	598	602 3/4
May	576 1/4	588	600 3/4	612 3/4	617
Jul	589	601 3/4	613 1/2	624 3/4	628 1/4
Sep	603 1/4	616	627 1/2	638 3/4	642
<b>Corn</b>					
Dec	455 1/2	451 1/2	449 3/4	461 3/4	464 1/2
Mar	475 1/4	473 1/2	475 3/4	482 3/4	484 3/4
May	486 3/4	486	488 1/2	495	496 3/4
Jul	496	495 3/4	498 1/4	504 1/4	506
Sep	498 1/4	498 1/2	501	506 1/2	508 1/4
<b>KC Wheat</b>					
Dec	590	613	640	643 1/4	645
Mar	596 1/2	617 3/4	634 1/4	643	646 3/4
May	603 1/4	623	639 1/4	647 1/2	651 1/2
Jul	610 1/4	629 1/4	644 1/4	652 1/2	656
Sep	623	641	655 1/4	664	667 1/2
<b>SB Meal</b>					
Dec	458.70	450.30	444.30	442.20	425.30
Jan	436.60	430.50	427.00	424.00	412.70
Mar	422.60	419.00	416.90	414.20	404.60
May	411.90	410.10	409.60	408.00	400.60
Jul	408.60	407.60	407.60	406.80	400.80

**MISSOURI GRAIN WEEKLY TRENDS**

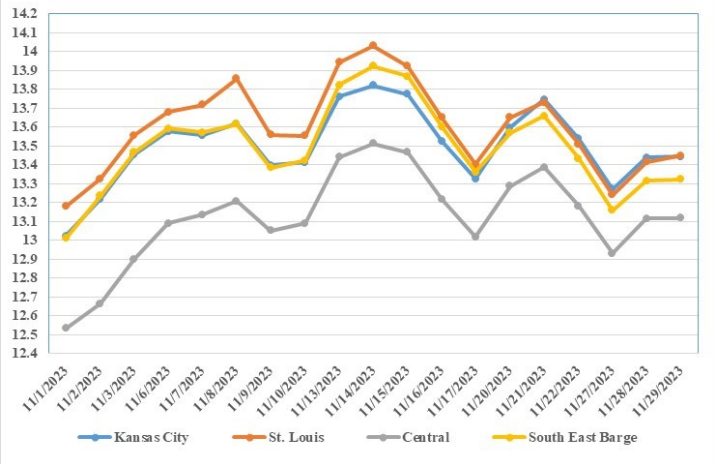
Compared to last week, Soybeans 0.28 to 0.31 lower, Wheat 0.22 to 0.57 higher, Corn unch to 0.09 higher, Sorghum 0.06 lower to 0.11 higher.

Area	#1 Soybeans	#2 Soft Wheat	#2 Corn	#2 Grain Sorghum
<b>Kansas City</b>				
Friday**	Holiday			
Monday	13.10-13.45	4.89	4.41-4.71	4.91
Tuesday	13.27-13.62	4.99	4.37-4.67	4.87
Wednesday	13.27-13.62	5.51	4.35-4.68	5.06
Thursday	13.22-13.57	5.63	4.46-4.79	5.12
Friday	13.05-13.40	5.67	4.64-4.83	5.14
<b>St. Louis</b>				
Friday**	Holiday			
Monday	13.24-13.25	5.49-5.54	4.58-4.62	5.08
Tuesday	13.42	5.59-5.62	4.54-4.59	5.04
Wednesday	13.45	5.71-5.74	4.57-4.58	5.02
Thursday	13.40-13.42	5.88	4.62	5.13
Friday	13.21-13.23	5.92-5.97	4.73-7.75	5.14
<b>Central</b>				
Friday**	Holiday			
Monday	12.85-13.00	4.84	4.36-4.41	
Tuesday	13.07-13.17	4.94	4.32-4.39	
Wednesday	13.07-13.17	5.06	4.30-4.41	
Thursday	13.02-13.12	5.38	4.52	
Friday	12.85-12.95	5.42	4.54	
<b>S.E. MO</b>				
Friday**	Holiday			
Monday	13.09-13.20		4.46-4.51	
Tuesday	13.26-13.37		4.44-4.47	
Wednesday	13.25-13.37		4.43-4.45	
Thursday	13.32-13.33		4.56-4.62	
Friday	13.12-13.20		4.59-4.74	

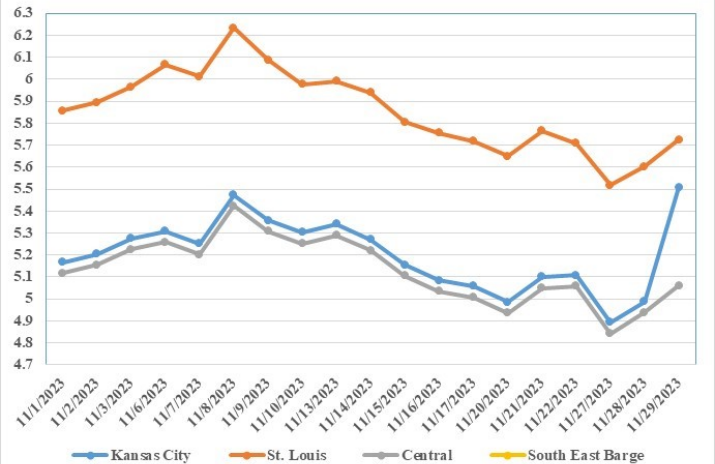
(PRICES PER BUSHEL) \*NEW CROP \*\*PREVIOUS WEEK'S PRICES  
\*Bids calculated using Kansas City, St. Louis, and St. Joseph bids

**MONTHLY GRAIN CROP**

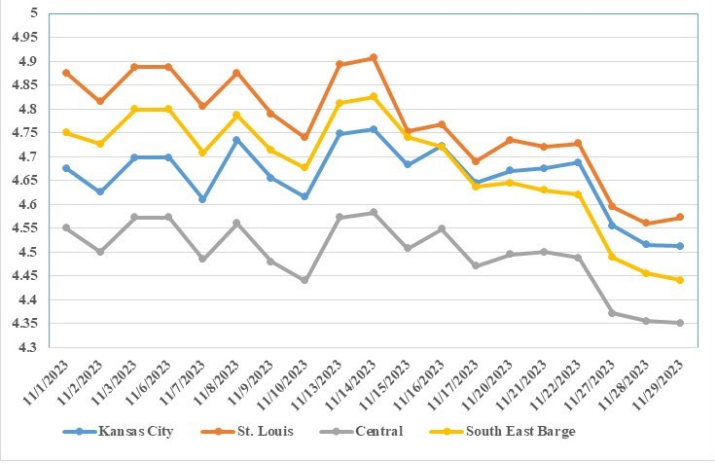
November 2023 Soybean Bids



November 2023 Wheat Bids



November 2023 Corn Bids



\*Axis value ranges may be updated to reflect data points.

**WHOLESALE FEEDSTUFFS PRICES**

(DOLLARS PER TON-BULK BASIS) 12/01/23

Area	Soybean Hulls Pellets	Soybean Meal 46.5-48%	Corn Gluten Pellets 21%	Wheat Middlings
Kansas City	195.00	460.30	267.50	181.67
St. Louis	n/a	n/a	247.50	170.00

## GRAIN CRUSHINGS AND CO-PRODUCTS PRODUCTION

Total corn consumed for alcohol and other uses was 511 million bushels in October 2023. Total corn consumption was up 7 percent from September 2023 and up 1 percent from October 2022. October 2023 usage included 92.5 percent for alcohol and 7.5 percent for other purposes. Corn consumed for beverage alcohol totaled 6.42 million bushels, up 19 percent from September 2023 and up 40 percent from October 2022. Corn for fuel alcohol, at 461 million bushels, was up 7 percent from September 2023 and up 3 percent from October 2022. Corn consumed in October 2023 for dry milling fuel production and wet milling fuel production was 92.0 percent and 8.0 percent, respectively.

Dry mill co-product production of distillers dried grains with solubles (DDGS) was 1.80 million tons during October 2023, up 6 percent from September 2023 and up 3 percent from October 2022. Distillers wet grains (DWG) 65 percent or more moisture was 1.38 million tons in October 2023, up 5 percent from September 2023 but down 1 percent from October 2022.

Wet mill corn gluten feed production was 265,908 tons during October 2023, up 8 percent from September 2023 but down 1 percent from October 2022. Wet corn gluten feed 40 to 60 percent moisture was 212,424 tons in October 2023, up 8 percent from September 2023 and up 2 percent from October 2022

## MISSOURI CROP PROGRESS AND CONDITION

	Week Ending			2018-2022 Average
	11/26/23	11/19/23	11/26/22	
Winter wheat emerged	92	81	91	82

This is the final weekly Missouri Crop Progress and Condition report for 2023. Monthly reports will be released January through March, with weekly reports resuming in April 2024.

## MISSOURI WEEKLY HAY SUMMARY 11/30/23

The first snow of the season fell over the northern half of the state this past week unofficially kicking of the feeding season for many producers. Despite the few inches of snow the state continues to remain dry with near 87 percent of the state in drought status. Hay movement has picked up a bit with trucks being a common sight on the roads again. Hay prices are steady, the supply of hay is light to moderate and demand is moderate. The Missouri Department of Agriculture has a hay directory at <https://apps.mda.mo.gov/haydirectory> or visit the University of Missouri Extension feed stuff finder at <https://feedstufffinder.org>  
 Alfalfa - Supreme 250.00-300.00, small square 10.00-15.00 per bale  
 Alfalfa - Premium 200.00-250.00  
 Alfalfa - Good 150.00-200.00, small square 5.00-10.00 per bale  
 Alfalfa - Fair 125.00-150.00  
 Alfalfa/grass mix - Good/Premium small square 5.00-10.00 per bale  
 Mixed grass - Good/Premium 150.00-225.00  
 Mixed grass - Fair/Good 100.00-175.00, small square 5.00-8.00 per bale  
 Mixed grass - Fair 50.00-100.00 per large round bale  
 Wheat straw - 4.00-7.00 per small square bale

Please Note: The above volumes (tonnage, acres, and bales) listed are for confirmed trades only, it does not include estimated volume (tonnage) for bids or offers to the trade. List your hay for sale at: [Hay Listing Online Form](#). Explanation of Hay Quality Guidelines: [Hay Quality Designation Guidelines](#). Glossary of Terms: [Livestock, Poultry, & Grain Hay Terms](#)

## MISSOURI WEEKLY SHEEP/GOAT AUCTION SUMMARY

Receipts: 967 Week Ago: 1,828 Last Year: 1,302

**SHEEP:** Feeder lambs Small and Medium 1-2 10 hd 28 lbs 215.00; 40-50 lbs 250.00-270.00.  
 Slaughter lambs Choice and Prime 1-3 w/s pkg 90 lbs 172.00; pkg 103 lbs 159.00. Choice and Prime 1-3 hair 55-70 lbs 250.00-274.00; 70-85 lbs 232.00-251.00; 90-100 lbs 170.00-182.50; pkg 113 lbs 200.00. Choice 1-3 hair 50-60 lbs 230.00-249.00; 60-70 lbs 220.00-232.00; 70-80 lbs 207.00-208.00; 100-115 lbs 140.00-167.00. Good 1-2 hair 50 lbs 185.00-220.00; pkg 88 lbs 157.00. Slaughter ewes Utility and Good 1-3 hair 80-140 lbs 80.00-85.00. Cull and Utility 1-2 hair 100-125 lbs 64.00-75.00. Slaughter ewes 1-2 pkg 145 lbs 142.00; 170-195 lbs 112.00-122.00. Replacement ewes Small and Medium 1-2 hair 1-2 yrs 77-85 lbs exp 180.00-207.00; 2-4 yrs 88 lbs exp 169.00; 2-4 yrs 108 lbs spr 126.00.

**GOATS:** Feeder kids Selection 1 30-50 lbs 255.00-310.00. Selection 2 30-45 lbs 217.00-245.00. Selection 3 20-45 lbs 135.00-185.00, pygmies 135.00-187.00.  
 Slaughter kids Selection 1 50-70 lbs 254.00-272.50. Selection 2 50-60 lbs 207.00-242.00; 60-70 lbs 237.00-250.00; 70-80 lbs 202.50-210.00.  
 Slaughter nannies/does Selection 1-2 pkg 39 lbs pygmies 170.00; 60-70 lbs 112.00-125.00, pygmies 102.00-122.00; pkg 70 lbs 130.00, thin 50.00; 80-145 lbs 87.00-131.00.  
 Slaughter bucks/billies Selection 1-2 pkg 52 lbs pygmies 110.00; 80-90 lbs 150.00-205.00; 130 lbs 110.00-142.00; pkg 175 lbs 205.00. Wethers Selection 1-2 pkg 102 lbs 240.00; Wether kids Selection 2 70-80 lbs 230.00-240.00.  
 Replacement nannies/does Selection 1-2 >6 yrs 143 lbs exp 155.00.  
 Families Selection 1-2 4-6 yrs 82 lbs exp with <20 lb kids 250.00 per family.

Explanatory Notes: Stage - Represents estimated lambing/kidding period (Open, Exp=exposed, Bred, Fall = Sep-Nov, Win = Dec-Feb, Spr = Mar-May, Sum=Jun-Aug; w/s = woolled and shorn; /hd= per head; /fam=per family  
 All price CWT unless otherwise noted.

## MISSOURI DROUGHT MONITOR

Date	None	D0	D1	D2	D3	D4
11/28/23	13.70	19.83	42.15	23.41	0.91	0.0
11/21/23	17.23	23.83	36.44	21.59	0.91	0.0
11/29/22	18.97	40.83	31.31	8.41	0.48	0.0

Reflects percentage of Missouri impacted by drought. D0 Abnormally Dry; D1 Moderate Drought; D2 Severe Drought; D3 Extreme Drought; D4 Exceptional Drought

## NATIONAL DIRECT DELIVERED FEEDER PIG REPORT

12/01/23 Receipts: 107,793 Week ago: 98,497 Year Ago: 110,866  
 Early weaned pigs and Feeder pigs steady.  
 Early weaned pigs 10-12 lbs. basis: Cash 45,189 head 18.00-36.00, weighted average 30.39  
 Formula 50,531 head 32.75-64.91, weighted average 44.46  
 Feeder pigs 40 pounds basis: Cash 12,073 head 36.00-49.00, weighted average 43.66

## NATIONAL DAILY DIRECT PRIOR DAY HOG REPORTS FOR 12/01/23

**BARROWS AND GILTS (Carcass Basis):** 3,571 head  
 Base Carcass Price 51.00-62.00, weighted average 56.72

**SOWS (Live Basis):** 7,188 head  
 300-500 lbs. 26.00-69.00  
 Over 500 lbs. 44.74-69.00

## MISSOURI WEEKLY DIRECT SLAUGHTER CATTLE REPORT 12/01/23

Weekly Receipts: 240 Week ago: 0 Year ago: 360  
 Trading as of Friday morning, flat dressed sales 5.00 lower and grid dressed sales 3.00 lower.

**LIVE STEERS & HEIFERS:** No sales reported  
**DRESSED STEERS & HEIFERS:** 2 loads flat Thu 275.00

**GRADE AND WEIGHT (Grid):** 2 loads late late Fri 282.00; 2 loads Thu 283.00

Click here for the current [National Crop Progress](#)  
 Click here for the current [Missouri Crop Progress](#)  
 The current hay directory can be found at: [Hay Directory](#).