

# Weekly Market Summary

Published by:  
**Missouri Department of Agriculture**  
**Ag Business Development Division**  
**Market News Program**



Chris Chinn, Director  
 Jill Wood, Division Director  
 Tony Hancock, Editor  
<http://www.ams.usda.gov/marketnews.htm>  
<http://www.ams.usda.gov/marketnews.htm>

Michael L. Parson, Governor

Volume XLIV, Number 2 ♦ P.O. Box 630, Jefferson City, MO 65102 ♦ (573) 751-4211 ♦ Mon, Jan 16, 2024

## MISSOURI WEEKLY FEEDER CATTLE WEIGHTED AVERAGE REPORT

Feeder Cattle Receipts: 25,008 Week ago: 44,690 Year ago: 49,302  
 Steers and Heifers Medium and Large 1—Weighted average weights and prices

### STEERS: Medium and Large 1

322 lbs. 308.33	523 lbs. 283.01	721 lbs. 229.57	902 lbs. 209.40
383 lbs. 301.09	571 lbs. 269.83	765 lbs. 221.45	985 lbs. 208.87
432 lbs. 298.30	623 lbs. 252.66	821 lbs. 218.98	
476 lbs. 298.33	671 lbs. 242.97	873 lbs. 214.64	

### HEIFERS: Medium and Large 1

314 lbs. 263.21	522 lbs. 236.84	720 lbs. 214.59
378 lbs. 256.66	572 lbs. 231.79	762 lbs. 206.60
427 lbs. 250.01	621 lbs. 220.91	808 lbs. 192.65
473 lbs. 245.58	672 lbs. 219.26	872 lbs. 191.38

## MISSOURI STEER (HEIFER) STOCKER FORMULA 01/15/2023

Monday's Missouri Stocker formula consists of **4844 (4810)** head with a weighted average weight of **560.78 (541.48)** lbs. and a price value of **261.21 (226.18)**, 11.14 lower (8.75 lower) than last week.

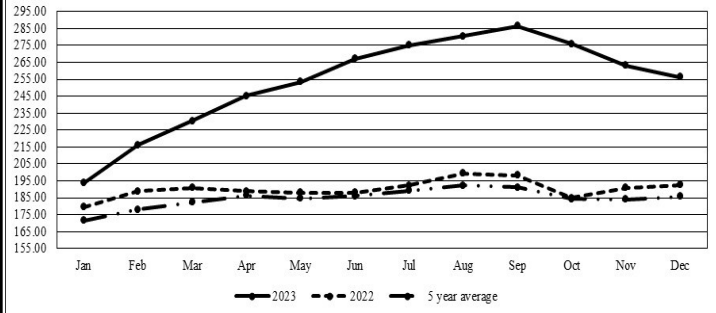
This a rolling seven day calculated weighted value which combines all Feeder Steers reported by MDA/USDA Market News Service weighing from 400-649 lbs. in the Medium and Large 1 and Medium and Large 1-2 frame and muscle classifications, including all comment cattle except Brahman X. Heifer values are in parentheses.

## MISSOURI WEEKLY CATTLE AUCTION SUMMARY

Total Receipts: 28,505 Week Ago: 49,999 Year Ago: 57,358

Compared to last week, feeders under 700 lbs. sold 5.00 to 10.00 lower, those over 700 lbs. sold steady to 5.00 lower. The supply of feeders was light and demand was light to moderate. Although the holidays are past not all barns were able to get back to business this week as winter weather complicated marketing. Five to ten inches of snow fell over north Missouri mid-week and neighboring states to the north and west were basically shut down and unable to accept any cattle even if sales had taken place. As the week ended record breaking dangerous cold settled over the state, temperatures dropped well below zero. The Kansas City weather station officially recorded an actual temperature of -17 with wind chills of -35. This has resulted in nearly all markets in the state closing on Monday and Tuesday (1/15-1/16) of the coming week. A few of the notable top end sales this week included a load of 813 lb. steers at Callaway Livestock Center that sold for 231.75. Kingsville Livestock Market sold a part load of 639 lb. steers for 275.50 and a full load of 717 lb. heifers at 224.25. Boxed beef cutouts posted significant gains this week. On Friday choice closed at 289.58, up 12.43 and select closed at 272.03, up 12.49 compared to last week. Negotiated feedlot sales as of the Friday afternoon was 35K head trade was light. Some slaughter plants had weather interruptions not only with the ability to receive livestock but also the ability for workers to get to plants. Live sales were reported from 172.00-175.00 and dressed sales at 272.00-275.00. Missouri Stocker formula consists of 4844 head with a weighted average weight of 560.78 lbs. and a price value of 261.21, 11.14 lower than a week ago. The steer/heifer spread is 35.03.

Missouri Stocker Formula - Steers

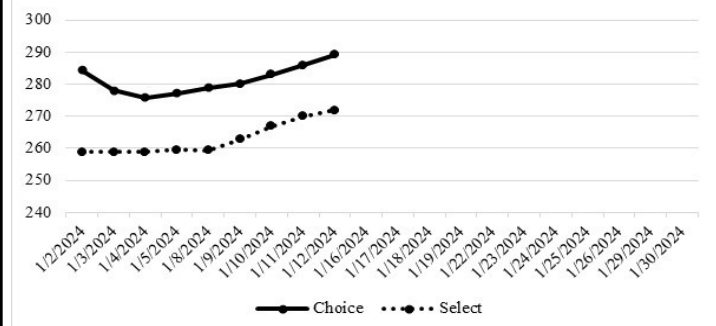


\*Graph is updated the first Monday of each month. Axis value ranges may be updated to reflect data points.

## NATIONAL BOXED BEEF CUTOUT/BOXED BEEF CUTS

<u>DATE</u>	<u>CHOICE</u>	<u>SELECT</u>	<u>TOTAL LOADS</u>
1/8	278.83	259.36	131
1/9	280.16	262.83	101
1/10	283.07	266.94	137
1/11	285.89	269.94	115
1/12	289.26	271.85	126
<b>5 Day Simple Average</b>	283.44	266.18	

Boxed Beef Cuts January 2024



\*Axis value ranges may be updated to reflect data points.

## WEEKLY LIVESTOCK SLAUGHTER 01/13/24

	<u>CATTLE</u>	<u>HOGS</u>	<u>SHEEP</u>
Week to Date:	549,000	2,279,000	35,000
Last Week:	551,000	2,371,000	28,000
Last Year:	661,000	2,689,000	63,000

The Weekly Market Summary, as well as historical summaries, are available on our website <https://agmarketnews.mo.gov/summaries>  
 Market News Hotline: 1-573-522-9244

**SOUTHWEST MISSOURI WEEKLY SUMMARY**

(Joplin and Springfield)

Receipts: 9,712 Week ago: 22,125 Year Ago: 16,355

Compared to last week, feeder steers sold 3.00-10.00 lower. Feeder heifers sold 7.00-12.00 lower. Compared to last week, slaughter cows and bulls sold 2.00-3.00 higher.

**FEEDER STEERS:**  
Medium and Large 1

300-400 lbs.	307.00-341.00
400-500 lbs.	290.00-330.00
500-600 lbs.	245.00-300.00
600-700 lbs.	229.00-262.00
700-800 lbs.	214.00-230.00
800-900 lbs.	206.50-222.10
900-1000 lbs.	204.50-211.25

**FEEDER HEIFERS:**  
Medium and Large 1

300-400 lbs.	280.00
400-500 lbs.	234.00-252.50
500-600 lbs.	220.00-252.00
600-700 lbs.	205.00-225.00
700-800 lbs.	199.00-216.00
800-900 lbs.	185.50-194.00

**FEEDER HOLSTEIN STEERS**  
Large 3

Pkg 505 lbs.	120.00
Pkg 720 lbs.	139.00

**SLAUGHTER COWS:** Breaking and Boning (70-85% lean) 89.50-98.50, high dressing 97.00-111.00; low dressing 82.50-91.00. Lean (85-90%) 78.00-92.00

**SLAUGHTER BULLS:** Yield Grade 1-2 1220-2245 lbs. 104.00-123.00; high dressing 119.00-140.00; low dressing 102.00-105.00

**BRED COWS:** Medium and Large 1-2 2-8 yrs 1010-1460 lbs 2nd/3rd stage 1100.00-1775.00, 1st stage 1100.00-1350.00; >8 yrs 1105-1330 lbs 2nd/3rd stage 1100.00-1450.00 per head

**BRED HEIFERS:** Medium and Large 1 2-4 yrs couple 1208 lbs 2nd/3rd stage 2200.00. Medium and Large 1-2 2-4 yrs 970-1325 lbs 2nd/3rd stage 1175.00-1575.00, 1st stage 1200.00 per head

**COW & CALF PAIRS:** Medium and Large 1-2 2-8 yrs couple 1733 lbs rebred 1st stage with >300 lb calves 2000.00; >8 yrs 1352-1355 lbs with baby to 300 lb calves 1525.00-1675.00, couple 1770 lbs rebred 1st stage with >300 lb calves 2150.00 per pair

**SOUTH CENTRAL MISSOURI WEEKLY SUMMARY**

(West Plains, Phillipsburg)

Receipts: 3,493 Week ago: 8,995 Year Ago: 8,603

Compared to last week, steers and heifers 3.00 to 10.00 lower, spots 15.00 lower, Slaughter cows 2.00 to 4.00 higher, slaughter bulls steady to 4.00 higher.

**FEEDER STEERS:**  
Medium and Large 1

300-400 lbs.	297.00-320.00
400-500 lbs.	280.00-311.00
500-600 lbs.	251.00-290.00
600-700 lbs.	230.00-255.00
700-800 lbs.	218.00-220.00

**FEEDER HEIFERS:**  
Medium and Large 1

12 hd 376 lbs.	249.00
400-500 lbs.	234.00-269.00
500-600 lbs.	210.00-245.00
600-700 lbs.	204.00-218.50
Pkg 708 lbs.	199.00

**FEEDER HOLSTEIN STEERS**  
Large 3

14 hd 1094 lbs.	125.00
-----------------	--------

**SLAUGHTER COWS:** Breaking and Boning (70-85% lean) 82.50-97.00, high dressing 95.00-110.00; low dressing 76.00-86.00. Lean (85-90%) 75.00-89.00

**SLAUGHTER BULLS:** Yield Grade 1-2 1280-2290 lbs. 104.50-116.00; high dressing 115.00-130.00; low dressing 91.00-101.00

**BRED COWS:** Medium and Large 1-2 2-8 yrs 1125-1545 lbs 2nd/3rd stage 1200.00-1675.00, 1st stage 1200.0-1475.00 per head

**BRED HEIFERS:** Medium and Large 1-2 <2 yrs 950 lbs 1st to 3rd stage 1250.00 per head

**COW & CALF PAIRS:** Scarce

**WEST CENTRAL MISSOURI WEEKLY SUMMARY**

(Kingsville, Windsor, Butler)

Receipts: 3,359 Week ago: 7,368 Year ago: 9,347

Compared to last week, steers and heifers sold steady to 10.00 lower. Slaughter cows sold 2.00-5.00 higher.

**FEEDER STEERS:**  
Medium and Large 1

350-400 lbs.	287.00-300.00
400-500 lbs.	263.00-289.00
500-600 lbs.	254.00-310.00
600-700 lbs.	239.00-275.50
700-800 lbs.	214.00-246.50
800-900 lbs.	217.00-221.00

**FEEDER HEIFERS:**  
Medium and Large 1

350-400 lbs.	244.50-265.00
450-500 lbs.	238.00-255.00
500-600 lbs.	219.50-250.00
600-700 lbs.	215.00-234.25
700-750 lbs.	214.00-224.25

**SLAUGHTER BULLS:** Yield Grade 1-2 1220-1975 lbs 109.50-120.00; high dressing 125.00-134.00; low dressing 93.50-102.50

**SLAUGHTER COWS:** Breaking and Boning (70-85% lean) 89.00-105.00, high dressing 100.50-113.00; low dressing 83.00-90.50. Lean (85-90%) 76.00-90.00

**BRED COWS:** Scarce

**COW & CALF PAIRS:** Scarce

**NORTHEAST MISSOURI WEEKLY SUMMARY**

(Bowling Green, Kingdom City, Palmyra)

Receipts: 6,250 Week ago: 2,462 Year ago: 7,978

Compared to last week, steers and heifers weighing 400-800 lbs sold mostly 10.00-12.00 lower, with several pot loads of 8 weight steers trading with a higher undertone on Monday. Slaughter cows sold steady to 5.00 higher.

**FEEDER STEERS:**  
Medium and Large 1

400-500 lbs.	269.00-305.00
500-600 lbs.	260.00-302.00
600-700 lbs.	241.50-268.00
700-800 lbs.	220.00-238.75
800-900 lbs.	198.25-231.75
900-1000 lbs.	201.50-212.00

**FEEDER HEIFERS:**  
Medium and Large 1

450-500 lbs.	241.00-257.50
500-600 lbs.	221.50-253.00
600-700 lbs.	213.00-235.00
700-800 lbs.	195.00-213.00
850-900 lbs.	190.00-193.00

**SLAUGHTER BULLS:** Yield Grade 1-2 1485-2055 lbs 112.00-119.00; couple high dressing 126.00-128.00; ind low dressing 105.00

**SLAUGHTER COWS:** Breaking and Boning (70-85% lean) 82.00-100.50; high dressing 89.00-116.00; low dressing 72.50-91.00. Lean (85-90%) 77.00-89.00.

**SLAUGHTER STEERS:** Choice and Prime 177.00-178.50. Choice 2-3 172.50-178.00. Select and Choice 1-3 165.00-170.00.

**SLAUGHTER HEIFERS:** Choice and Prime 2-4 179.00. Choice 2-3 174.00-178.50. Select and Choice 1-3 167.00-169.00.

**BRED COWS:** Scarce

**COW/CALF PAIRS:** Scarce

**NORTH CENTRAL MISSOURI WEEKLY SUMMARY**

(Macon, Unionville, Green City, New Cambria)

Receipts: 1,539 Week ago: 7,647 Year ago: 7,142

Compared to last week's very active market, 500-750 lb steers and 500-700 lb heifers selling 10.00-12.00 lower with spots 15.00 lower on the 6 weight heifers. Slaughter cows sold firm to 5.00 higher.

\*Some sale barns on a bi-weekly schedule and may not have a sale each week.

**FEEDER STEERS:**  
Medium and Large 1

10 hd 397 lbs.	310.00
400-500 lbs.	303.00-323.00
500-600 lbs.	259.25-298.00
600-700 lbs.	248.25-261.75
700-800 lbs.	230.00-240.75
Pkg 827 lbs.	217.00

**FEEDER HEIFERS:**  
Medium and Large 1

400-500 lbs.	239.00-247.50
500-600 lbs.	224.00-239.00
600-700 lbs.	218.50-223.50
45 hd 710 lbs.	216.50
pkg 996 lbs.	185.00

**SLAUGHTER BULLS:** Yield Grade 1-2 ind 1740 lbs high dressing 125.00

**SLAUGHTER COWS:** Breaking and Boning (70-85% lean) 85.50-100.00, high dressing 93.00-116.00; low dressing 82.50-88.50. Lean (85-90%) 82.00-87.00

**BRED COWS:** Scarce

**COW & CALF PAIRS:** Scarce

**SOUTHEAST MISSOURI WEEKLY SUMMARY**

(Jackson and Farmington)

Receipts: 1,481 Three Weeks ago: 922 Year ago: 1,573  
Compared to three weeks ago, steers and heifers sold steady to 15.00 higher. Slaughter cows and bulls sold steady to 3.00 higher.

**FEEDER STEERS:**  
Medium and Large 1

300-400 lbs.	270.00-305.00
400-500 lbs.	247.00-292.00
500-600 lbs.	244.00-287.00
600-700 lbs.	220.00-262.00
700-800 lbs.	205.00-230.00
800-900 lbs.	200.00-212.00

**FEEDER HEIFERS:**  
Medium and Large 1

300-400 lbs.	230.00-277.00
400-500 lbs.	220.00-267.00
500-600 lbs.	219.00-245.00
600-650 lbs.	200.00-225.00
700-800 lbs.	190.00-212.50
800-900 lbs.	189.00-199.00

**SLAUGHTER BULLS:** Yield Grade 1-2 1010-2090 lbs 92.00-110.00; high dressing 106.00-119.00; low dressing 85.00-86.00

**SLAUGHTER COWS:** Breaking and Boning (75-85% lean) 78.00-88.50; high dressing 88.00-106.00. Lean (85-90% lean) 65.00-79.00

**BRED COWS:** Medium and Large 2 2-8 yrs 1000-1580 lbs 1st to 3rd stage 1000.00-1650.00; >8 yrs 1060-1210 lbs 3rd stage 860.00-1275.00 per head

**COW & CALF PAIRS:** Scarce

**EAST CENTRAL MISSOURI WEEKLY SUMMARY**

(Cuba, Vienna)

Receipts: 646 Three Weeks ago: 1,533 Year ago: 3,852  
Feeder supply not sufficient to establish a market trend. Slaughter cows steady compared to three weeks ago.

**FEEDER STEERS:**  
Medium and Large 1

Pkg 374 lbs.	260.00
400-500 lbs.	250.00-271.00
500-600 lbs.	232.50-260.00
Pkg 620 lbs.	235.00
Pkg 725 lbs.	220.00
800-900 lbs.	206.00-210.00

**FEEDER HEIFERS:**  
Medium and Large 1

Pkg 426 lbs.	250.00
500-600 lbs.	220.00-241.00
600-650 lbs.	227.00-231.00
Pkg 726 lbs.	200.00

**SLAUGHTER BULLS:** Yield Grade 1-2 1475-1980 lbs ind 110.00; ind high dressing 131.00; low dressing couple 95.00-108.00

**SLAUGHTER COWS:** Breaking and Boning, (70-85% lean) 90.00-99.50; high dressing 102.50; low dressing 88.00. Lean (85-90%) 82.00-91.00

**BRED COWS:** Medium and Large 1-2 2-8 yrs 1150-1400 lbs 2nd/3rd stage 1400.00-1700.00; >8 yrs 1282 lbs 3rd stage 1375.00 per head

**COW & CALF PAIRS:** Medium and Large 1-2 5-8 yrs 1170 lbs with 150-300 lb calves 1725.00 per pair

**NORTHWEST MISSOURI WEEKLY SUMMARY**

(Tina)

Receipts: 2,025 Week Ago: 2,192 Year Ago: 2,508  
Compared to last week, feeders steady to firm, with steers 400-500 lbs 10.00 to 15.00 higher. Slaughter cows and bulls 200 to 4.00 higher.

**FEEDER STEERS:**  
Medium and Large 1

400-500 lbs.	305.00-337.50
500-600 lbs.	275.00-301.00
600-700 lbs.	255.00-266.00
700-800 lbs.	223.00-236.00
800-900 lbs.	219.50-223.00

**FEEDER HEIFERS:**  
Medium and Large 1

400-500 lbs.	250.00-268.00
500-600 lbs.	232.00-254.00
600-700 lbs.	220.00-235.00
700-750 lbs.	212.50-221.00

**SLAUGHTER BULLS:** Yield Grade 1-2 1370-2220 lbs 97.00-116.00

**SLAUGHTER COWS:** Breaking and Boning, (70-85% lean) 81.00-94.00; high dressing 94.00-107.00. Lean (85-90%) 79.00-88.00

**BRED COWS:** Scarce

**COW & CALF PAIRS:** Scarce

**AFTERNOON NATIONAL SLAUGHTER CATTLE REVIEW**

So far for Friday in the Southern Plains negotiated cash trading has been limited with light demand. A few live FOB purchases have traded at 172.00, however, not enough for a full market trend. Last week in the Southern Plains live FOB purchases traded from 172.00-173.00. In Nebraska negotiated cash trade has been slow with light demand. Thus far for the week live FOB purchases traded steady to 2.00 lower at 173.00 and dressed delivered purchases traded 0.50-2.00 lower from 272.00 - 275.00. In the Western Cornbelt negotiated cash trade has been mostly inactive with light demand. Not enough purchases for a market trend. Thursday was the fully reported market with live FOB purchases at 175.00 and dressed delivered purchases 275.00, a light test of dressed purchases was noted.

**Negotiated Cash Sales:**

<b>Confirmed:</b>	6,545	<b>Week Ago:</b>	9,959	<b>Year Ago:</b>	13,966
<b>Week to date:</b>	35,472	<b>Week Ago:</b>	58,473	<b>Year Ago:</b>	66,073

<u>Live Basis</u>	<u>Steers</u>	<u>Heifers</u>
<b>Over 80% Choice</b>	172.00-173.00, avg 172.69	172.00-173.00, avg 172.75
<b>65-80% Choice</b>	172.00	172.00-173.00, avg 172.30
<b>35-65% Choice</b>	172.00	-
<b>0-35% Choice</b>	-	-
<b>Total All Grades</b>	172.00-173.00, avg 172.29	172.00-173.00, avg 172.64
<u>Dressed Basis</u>		
<b>Over 80% Choice</b>	272.00-275.00, avg 273.67	273.00-275.00, avg 274.38
<b>65-80% Choice</b>	273.00	-
<b>35-65% Choice</b>	-	-
<b>0-35% Choice</b>	-	-
<b>Total All Grades</b>	272.00-275.00, avg 273.59	273.00-275.00, avg 274.38

<u>All Beef Type Steers/Heifers</u>	<u>Head</u>	<u>Avg Wt</u>	<u>Price Range</u>	<u>Wtd Avg</u>
Live FOB	5,546	1407.3	170.00-175.00	172.47
Live Del	32	1400.0	174.00	174.00
Dressed Del	967	891.0	272.00-285.00	274.38
Dressed FOB	-	-	-	-

**WEEKLY COMMODITY FUTURES TRENDS**

Compared to last week, Live Cattle 0.55 to 1.07 higher, Lean Hogs 1.10 to 2.25 higher, Feeder Cattle 3.02 to 3.55 higher.

**Daily Futures Closes**

	Mon.	Tues.	Wed.	Thu.	Fri.
<b>Cattle</b>					
Feb	169.95	170.77	170.75	171.80	171.37
Apr	173.02	173.60	173.67	174.57	174.17
Jun	170.35	170.75	171.10	171.97	171.62
Aug	170.80	171.22	171.62	172.40	172.07
Oct	175.85	176.17	176.60	177.15	176.97
<b>Lean Hogs</b>					
Feb	70.60	71.87	72.07	72.60	71.90
Apr	77.52	78.50	78.95	79.05	78.62
May	83.95	84.30	84.70	84.75	84.45
Jun	92.17	92.45	92.62	92.77	92.45
Jul	94.02	94.15	94.40	94.45	94.37
<b>Fdr Cat</b>					
Jan	223.87	223.77	224.62	226.27	226.57
Mar	225.07	224.87	226.12	227.40	227.70
Apr	230.10	230.35	231.45	232.72	233.00
May	234.60	235.15	236.25	237.47	237.82
Aug	250.52	251.22	252.20	253.27	253.85
<b>Milk</b>					
Jan	15.14	15.25	15.20	15.19	15.15
Feb	15.74	15.98	16.22	15.87	15.90
Mar	16.28	16.50	16.66	16.31	16.33

**WEEKLY COMMODITY GRAIN FUTURES TRENDS**

Compared to last week, Soybeans 0.20 to 0.44 lower, Wheat 0.14 to 0.20 lower, Corn 0.12 to 0.15 lower, KC Wheat 0.11 to 0.14 lower, Soybean Meal 7.30 to 17.30 lower.

**Daily Grain Futures Closes**

	Mon.	Tues.	Wed.	Thu.	Fri.
<b>Soybeans</b>					
Jan	1239 1/2	1241 1/2	1228 3/4	1231 1/4	1205 3/4
Mar	1245 1/2	1248 1/2	1236 1/2	1236 1/2	1224 1/4
May	1254 3/4	1258 3/4	1247 1/2	1248	1235 3/4
Jul	1261 3/4	126 1/2	1255 1/4	1256	1244 1/4
Aug	1246 1/2	1252	1243 1/2	1244 1/2	1233 1/2
<b>Wheat</b>					
Mar	596 1/4	610	610 3/4	603 3/4	596
May	609 1/4	622 1/2	623 3/4	616 3/4	610
Jul	617 3/4	630 3/4	631 3/4	624 3/4	618 1/2
Sep	629 1/4	641 33/4	643 1/2	635 3/4	629 3/4
Dec	643 3/4	656	657 3/4	650 1/4	644 1/2
<b>Corn</b>					
Mar	455	459 1/4	459 1/2	457 3/4	447
May	467 1/2	471 1/2	471 1/2	469 3/4	459
Jul	478	482	481 1/4	479	468 1/4
Sep	482	485 3/4	485	483	474 1/4
Dec	489 1/4	492 3/4	492	489 3/4	481 3/4
<b>KC Wheat</b>					
Mar	615 1/4	630 3/4	624 1/2	616	615 1/4
May	618 3/4	634 1/4	629 1/4	621 1/4	620 1/4
Jul	622 3/4	645 3/4	633 1/4	625 1/2	623 1/4
Sep	634 1/2	661 1/4	644 1/4	636 1/4	633 1/2
Dec	650 3/4	670 3/4	659 1/2	651	648 1/2
<b>SB Meal</b>					
Jan	368.10	366.00	361.30	361.40	351.30
Mar	368.50	367.60	364.30	362.20	362.10
May	369.10	368.20	364.20	362.50	361.00
Jul	371.60	370.70	366.60	364.90	363.00
Aug	370.60	369.70	366.00	364.10	362.60

**MISSOURI GRAIN WEEKLY TRENDS**

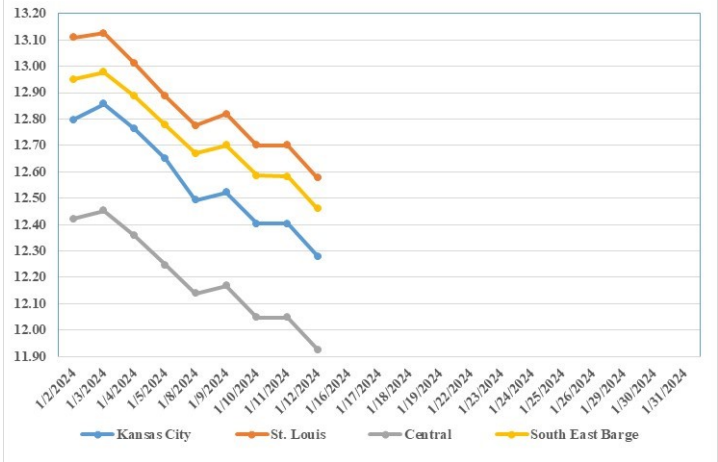
Compared to last week, Soybeans 0.31 to 0.42 lower, Wheat 0.20 lower, Corn 0.04 to 0.14 lower, Sorghum 0.14 lower.

Area	#1 Soybeans	#2 Soft Wheat	#2 Corn	#2 Grain Sorghum
<b>Kansas City</b>				
Friday**	12.46-12.81	5.86	4.51-4.71	4.96
Monday	12.26-12.61	5.66	4.45-4.65	4.90
Tuesday	12.29-12.64	5.80	4.49-4.69	4.94
Wednesday	12.17-12.52	5.81	4.50-4.75	4.95
Thursday	12.17-12.52	5.74	4.48-4.73	4.93
Friday	12.04-12.39	5.66	4.37-4.62	4.82
<b>St. Louis</b>				
Friday**	12.88-12.89	6.06-6.41	4.68	5.01
Monday	12.78	5.86-6.22	4.59-4.60	4.95
Tuesday	12.82-12.83	6.00-6.36	4.64-4.67	4.99
Wednesday	12.70-12.71	6.01-6.36	4.68-4.72	5.00
Thursday	12.70-12.71	5.94-6.29	4.67-4.72	4.98
Friday	12.57-12.58	5.86-6.21	4.62-4.63	4.87
<b>Central</b>				
Friday**	12.21-12.26	5.66	4.36-4.46	---
Monday	12.11-12.16	5.46	4.30-4.40	---
Tuesday	12.14-12.19	5.60	4.34-4.44	---
Wednesday	12.02-12.07	5.61	4.35-4.45	---
Thursday	12.02-12.07	5.54	4.33-4.43	---
Friday	11.89-11.94	5.46	4.22-4.32	---
<b>S.E. MO</b>				
Friday**	12.76-12.78	---	4.55-4.61	---
Monday	12.66-12.68	---	4.50-4.55	---
Tuesday	12.69-12.71	---	4.54-4.59	---
Wednesday	12.57-12.61	---	4.55-4.68	---
Thursday	12.57-12.62	---	4.53-4.66	---
Friday	12.44-12.49	---	4.42-4.57	---

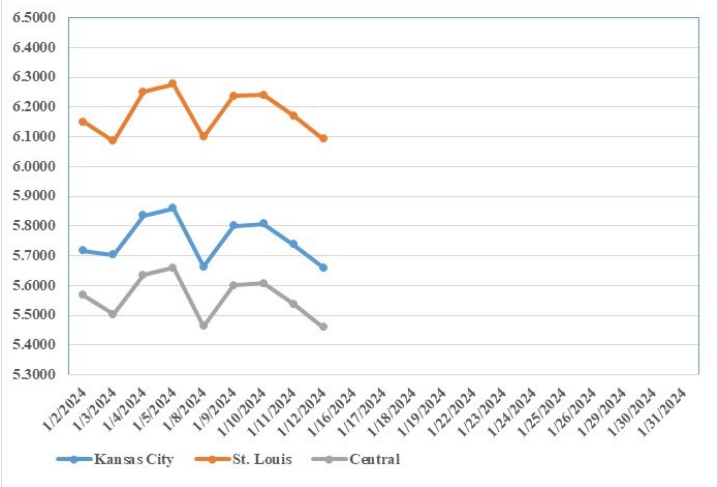
(PRICES PER BUSHEL) \*NEW CROP \*\*PREVIOUS WEEK'S PRICES  
\*Bids calculated using Kansas City, St. Louis, and St. Joseph bids

**MONTHLY GRAIN CROP**

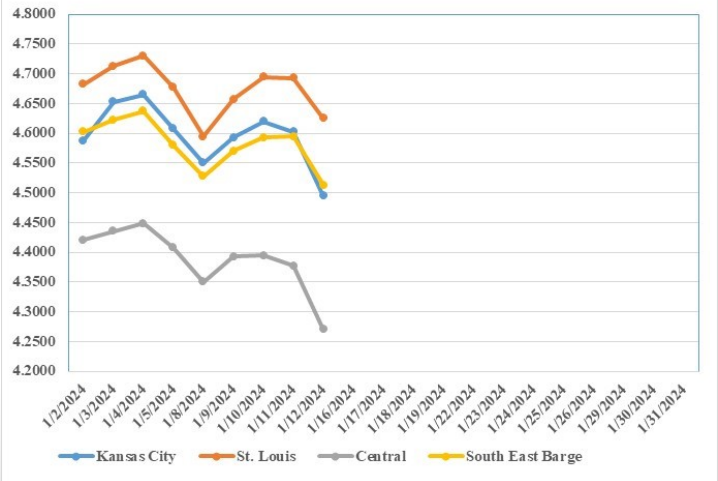
January 2024 Soybean Bids



January 2024 Wheat Bids



January 2024 Corn Bids



\*Axis value ranges may be updated to reflect data points.

**WHOLESALE FEEDSTUFFS PRICES**

(DOLLARS PER TON-BULK BASIS) 01/05/24

Area	Soybean Hulls Pellets	Soybean Meal 46.5-48%	Corn Gluten Pellets 21%	Wheat Middlings
Kansas City	160.00	369.10	272.50	185.00
St. Louis	n/a	n/a	257.50	176.00



## GRAIN STOCKS

**Corn** stored in all positions on December 1, 2023 totaled 12.2 billion bushels, up 13 percent from December 1, 2022. Of the total stocks, 7.83 billion bushels are stored on farms, up 16 percent from a year earlier. Off-farm stocks, at 4.34 billion bushels, are up 7 percent from a year ago. The September - November 2023 indicated disappearance is 4.53 billion bushels, compared with 4.21 billion bushels during the same period last year. **Soybeans** stored in all positions on December 1, 2023 totaled 3.00 billion bushels, down 1 percent from December 1, 2022. Soybean stocks stored on farms totaled 1.45 billion bushels, down 2 percent from a year ago. Off-farm stocks, at 1.55 billion bushels, are up slightly from last December. Indicated disappearance for September - November 2023 totaled 1.43 billion bushels, down 6 percent from the same period a year earlier. **All wheat** stored in all positions on December 1, 2023 totaled 1.41 billion bushels, up 8 percent from a year ago. On-farm stocks are estimated at 395 million bushels, up 9 percent from last December. Off-farm stocks, at 1.02 billion bushels, are up 7 percent from a year ago. The September - November 2023 indicated disappearance is 357 million bushels, 23 percent below the same period a year earlier.

## WORLD AGRICULTURAL SUPPLY AND DEMAND EST

**WHEAT:** Projected 2023/24 U.S. wheat ending stocks are lowered 11 million bushels on decreased supplies that more than offset less use. June 1 beginning stocks are reduced based on the NASS Grain Stocks report. Seed use is reduced 1 million bushels to 64 million. All wheat feed and residual use for 2023/24 is unchanged and reflects disappearance for June-November as indicated by the December 1 and revised September 1 stocks released in the NASS Grain Stocks report; however, there are offsetting by-class changes to feed and residual use. The 2023/24 season-average farm price is forecast \$0.10 per bushel lower at \$7.20, based on prices received to date and expectations for futures and cash prices for the remainder of 2023/24. **COARSE GRAINS:** This month's 2023/24 U.S. corn outlook is for greater production, larger food, seed, and industrial use (FSI), increased feed and residual use, and higher ending stocks. Corn production is estimated at a record 15.3 billion bushels, up 108 million as an increase in yield to a record 177.3 bushels per acre is partly offset by a 0.6-million acre decline in harvested area. Total corn use is raised 75 million bushels to 14.6 billion. Corn used for ethanol is raised 50 million bushels to 5.4 billion. Feed and residual use is raised 25 million bushels to 5.7 billion, based on indicated disappearance during the September-November quarter as reflected by the Grain Stocks report, and historical revisions to production and stocks from 2018 to 2022 following the recent Agricultural Census results. With supply rising more than use, 2023/24 corn stocks are up 31 million bushels. The season-average corn price received by producers is lowered 5 cents to \$4.80 per bushel. **OILSEEDS:** U.S. oilseed production for 2023/24 is estimated at 122.4 million tons, up 0.9 million from last month. Higher soybean, rapeseed, and sunflowerseed crops are partly offset by lower peanuts and cottonseed. Soybean production is estimated at 4.2 billion bushels, up 35 million, led by increases for Illinois, Missouri, and North Dakota. Harvested area is estimated at 82.4 million acres, down 0.4 million from the previous report. Yield is estimated at 50.6 bushels per acre, up 0.7 bushels. With slightly lower beginning stocks, soybean supplies are up 31 million bushels from last month. The soybean export and crush forecasts are unchanged. With higher supplies and slightly lower residual, ending stocks are projected at 280 million bushels, up 35 million. The soybean oil balance sheet adjustments include increased imports and biofuel use, and lower exports and food, feed, and other industrial use. Lower food, feed, and other industrial use is partly offset by higher imports and consumption of canola oil.

## MISSOURI WEEKLY HAY SUMMARY 01/11/24

The first major winter storm of the year came this week with the northern 1/3 of the state seeing the most impact. Snowfall ranged from 5- 10 inches causing some interruptions to hay movement. Given that the ground was mostly still unfrozen farmers struggled feeding between snow and mud that appeared underneath. The moisture was welcome however and those in the south would sure like to see some as several becoming quite concerned with lack of stock water supplies. The supply of hay is light to moderate, demand is moderate to good, and prices mostly steady. The Missouri Department of Agriculture has a hay directory at <https://apps.mda.mo.gov/haydirectory> or visit the University of Missouri Extension feed stuff finder at <https://feedstufffinder.org>  
Alfalfa - Supreme 250.00-300.00, small square 10.00-15.00 per bale  
Alfalfa - Premium 200.00-250.00  
Alfalfa - Good 150.00-200.00, small square 5.00-10.00 per bale  
Alfalfa - Fair 125.00-150.00  
Alfalfa/grass mix - Good/Premium small square 5.00-10.00 per bale  
Mixed grass - Good/Premium 150.00-225.00  
Mixed grass-Fair/Good 100.00-175.00, small square 5.00-11.00 per bale  
Mixed grass - Fair 50.00-100.00 per large round bale  
Wheat straw - 4.00-7.00 per small square bale

Please Note: The above volumes (tonnage, acres, and bales) listed are for confirmed trades only, it does not include estimated volume (tonnage) for bids or offers to the trade. List your hay for sale at: [Hay Listing Online Form](#). Explanation of Hay Quality Guidelines: [Hay Quality Designation Guidelines](#). Glossary of Terms: [Livestock, Poultry, & Grain Hay Terms](#)

## MISSOURI WEEKLY SHEEP/GOAT AUCTION SUMMARY

Receipts: 2,056 Week Ago: 934 Last Year: 2,809

**SHEEP:** Feeder Lambs Small and Medium 1-2 hair 26-46 lbs 275.00-330.00; pkg 50 lbs 255.00.

Slaughter Lambs Choice and Prime 1-3 hair pkg 49 lbs fancy 335.00; 50-60 lbs 300.00-332.50; 60-70 lbs 275.00-325.00; 70-80 lbs 250.00-290.00; 80-90 lbs 230.00-275.00; 90-110 lbs 205.00-220.00. Choice 1-2 55-65 lbs 267.50-375.00; 70-80 lbs 237.50-240.00; 100 lbs 175.00-185.00. Choice 1 -3 pkg 58 lbs 280.00; pkg 78 lbs 250.00.

Ewes Utility and Good 1-2 wool 100-160 lbs 80-100.00 Utility and Good 1-3 hair pkg 128 lbs 82.50.

Bucks 1-2 hair pkg 135 lbs 120.00.

Replacement Ewes Small and Medium 1-2 hair 1-2 yrs Exp 80-90 lbs 110.00-125.00; 2-4 yrs exp 120 lbs 142.50; 2-4 yrs spr 132 lbs 135.00.

**GOATS:** Feeder Kids Selection 1 30-40 lbs 317.50-340.00; 45-50 lbs 310.00-337.50. Selection 2 26 lbs 285.00; 40-45 lbs 260.00-285.00. Selection 3 pkg 38 lbs 150.00. wether kids Selection 1 44 lbs 350.00.

Slaughter Kids Selection 1 50-60 lbs 305.00-352.50, fancy 370.00; 60-70 lbs 290.00-345.00; 70-80 lbs 290.00-305.00. Selection 1-2 pkg 58 lbs 275.00; pkg 78 lbs 240.00. Selection 2 50-60 lbs 215.00-255.00; 60-70 lbs 235.00-275.00.

Nannies Selection 1-2 80-110 lbs 100.00-130.00. Selection 1-2 pkg 112 lbs 110.00.

Billies Selection 1-2 pkg 72 lbs pygmies 185.00; few 100 lbs 205.00-230.00. Selection 2 pkg 76 lbs 150.00.

Wethers Selection 1-2 pkg 70 lbs 270.00.

Explanatory Notes: Stage - Represents estimated lambing/kidding period (Open, Exp=exposed, Bred, Fall = Sep-Nov, Win = Dec-Feb, Spr = Mar-May, Sum=Jun-Aug; w/s = woolled and shorn; /hd = per head; /fam=per family  
All price CWT unless otherwise noted.

## MISSOURI DROUGHT MONITOR

Date	None	D0	D1	D2	D3	D4
01/09/24	11.02	15.78	43.40	29.38	0.42	0
01/02/24	6.73	21.77	41.05	29.36	1.09	0
01/10/23	41.44	49.68	7.27	1.61	0	0

Reflects percentage of Missouri impacted by drought. D0 Abnormally Dry; D1 Moderate Drought; D2 Severe Drought; D3 Extreme Drought; D4 Exceptional Drought

## NATIONAL DIRECT DELIVERED FEEDER PIG REPORT

01/12/24 Receipts: 135,009 Week ago: 128,921 Year Ago: 117,092  
Early weaned pigs steady to 3.00 higher. Feeder pigs steady to 4.00 higher.  
Early weaned pigs 10-12 lbs. basis: Cash 88,665 head 11.00-45.00, weighted average 35.43. Formula 30,084 head 35.06-53.93, weighted average 43.43. Feeder pigs 40 pounds basis: Cash 16,260 head 36.00-57.00, weighted average 49.56.

## NATIONAL DAILY DIRECT PRIOR DAY HOG REPORTS FOR 01/12/24

**BARROWS AND GILTS (Carcass Basis):** 2,110 head  
Base Carcass Price 45.00-45.50, weighted average 45.48

**SOWS (Live Basis):** 7,693 head  
300-500 lbs. 12.00-46.69  
Over 500 lbs. 24.00-46.69

## MISSOURI WEEKLY DIRECT SLAUGHTER CATTLE REPORT 01/12/24

Weekly Receipts: 160 Week ago: 400 Year ago: 280  
Trading as of Friday morning, flat dressed sales steady and grid dressed sales inactive.

**LIVE STEERS & HEIFERS:** No sales reported  
**DRESSED STEERS & HEIFERS:** 4 loads flat Wed 275.00

**GRADE AND WEIGHT (Grid):** No sales reported

Click here for the current [National Crop Progress](#)  
Click here for the current [Missouri Crop Progress](#)  
The current hay directory can be found at: [Hay Directory](#).