

**Notes from the
Thousand Cankers of Black Walnut National Conference
November 3-4, 2009 - St. Louis, Missouri
Doubletree Hotel—St. Louis at Westport**

This is based on notes taken by Julia Thompson and David Johnson (both of the Missouri Department of Agriculture) and typed by J. Thompson (CAUTION: This is not a transcript, but notes. Remarks are often paraphrased and may have been accidentally omitted or misunderstood by the note-takers. It has not been compared with the event recording to check for accuracy.)

Wednesday, November 4, 2009

Key to some abbreviations used:

WTB = walnut twig beetle = *Pityophthorus juglandis*

TCD = thousand cankers disease

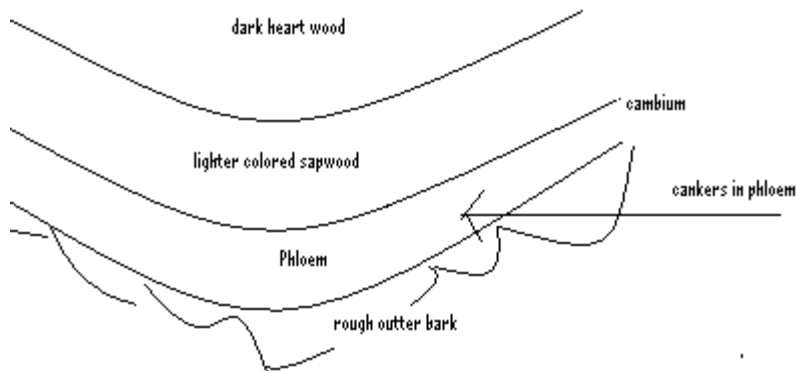
Gm = *Geosmithia 'morbida'* ('*morbida*' is proposed species name of this newly discovered species)

BW = black walnut = *Juglans nigra*

Jay Pscheidt (Oregon State University) – Black Walnut Decline in Oregon.

- Appointment is 100% Extension with responsibilities for fruits, nuts, vegetables, ornamentals
- Touted
 - Oregon's online guide to plant disease control. <http://www.ipmnet.org/plant-disease/index.cfm>
 - APS's Compendium of Nut Crop Diseases (which actually does not cover BW)
- Oregon has huge black walnuts, no lack of rain to grow them big
- *Juglans hindsii* is native in parts of southern OR rest have been planted
- Finding TCD in "horticultural islands" quite remote from other walnuts
- On the Barlow place (historic site) black walnuts were planted (believes those pictured were replacements)
 - Pictures showing place in 2009 compared with 2003 show lots of dieback
- In early 1990's was an small area near Albany, OR where dieback of upper crown of walnut
 - Cause not found
- Oct 15, 2001 BW in landscapes in Portland, Or and Vancouver, WA (across river from Portland) having problems
 - 25-80% crown dieback
 - It was said that "some of the branches had borers"
 - Negative for anything known
- Bunch disease? No, this symptom is not seen in OR
- 2007 Dieback affecting mature black walnuts reported from both E and W of OR
 - Rumors of a phytoplasma, NOT a phytoplasma
 - Borer identified as WTB which lead him to contact CO group
- Oregon story of disease progression a little different than CO
 - Affects very large trees
 - Disease progresses slowly, in some not dying, just with some crown loss
 - Dieback in the crown, dead leaves may hang on
 - Don't often see the symptoms in the summer before, but in the spring the trees don't leaf out well

- Looked for a long time in the wrong places but finally Ned Tisserat verified *Geosmithia* in the bark (phloem) not in the cambium
- TCD starves the tree
- Black walnuts in Oregon *may be hybrid*
- There are other things that kill BW
 - ◆ these may be secondary on trees stressed by TCD
 - ◆ Armillaria root rot—moves down line if trees like beetle does in OR
- Management : Prune hard; if that doesn't work, take out the tree, value of wood will pay for removal
 - Residue—potential to be moved as firewood
 - Need national campaign to NOT move firewood



- Be cautious of most conclusions until we get more data

Question: Hybrids? Answer: most all are probably hybrids. DNA is being checked. Thinks all pure BW may be dead.

Question: Is *Geosmithia* same? Answer: sent to Ned. Ned's comment: Oregon's match some in CA and AZ and not match some but data is all preliminary

Question: Is there firewood movement Answer: some

Question How long before wood can be safely moved? Answer: 2-3 years

Question: Drought assoc. with beetles in OR? Answer: All the rain we want although droughty in summer. Does not think drought part of problem in OR.

Takes a long time to kill a big tree; more reserves to deplete.